

NEW MEXICO OIL CONSERVATION COMMISSION **RECEIVED**
WELL LOCATION AND ACREAGE DEDICATION PLAT

Form C-102
Supersedes C-128
Effective 1-1-65

All distances must be from the outer boundaries of the Section.

JUL 27 1966

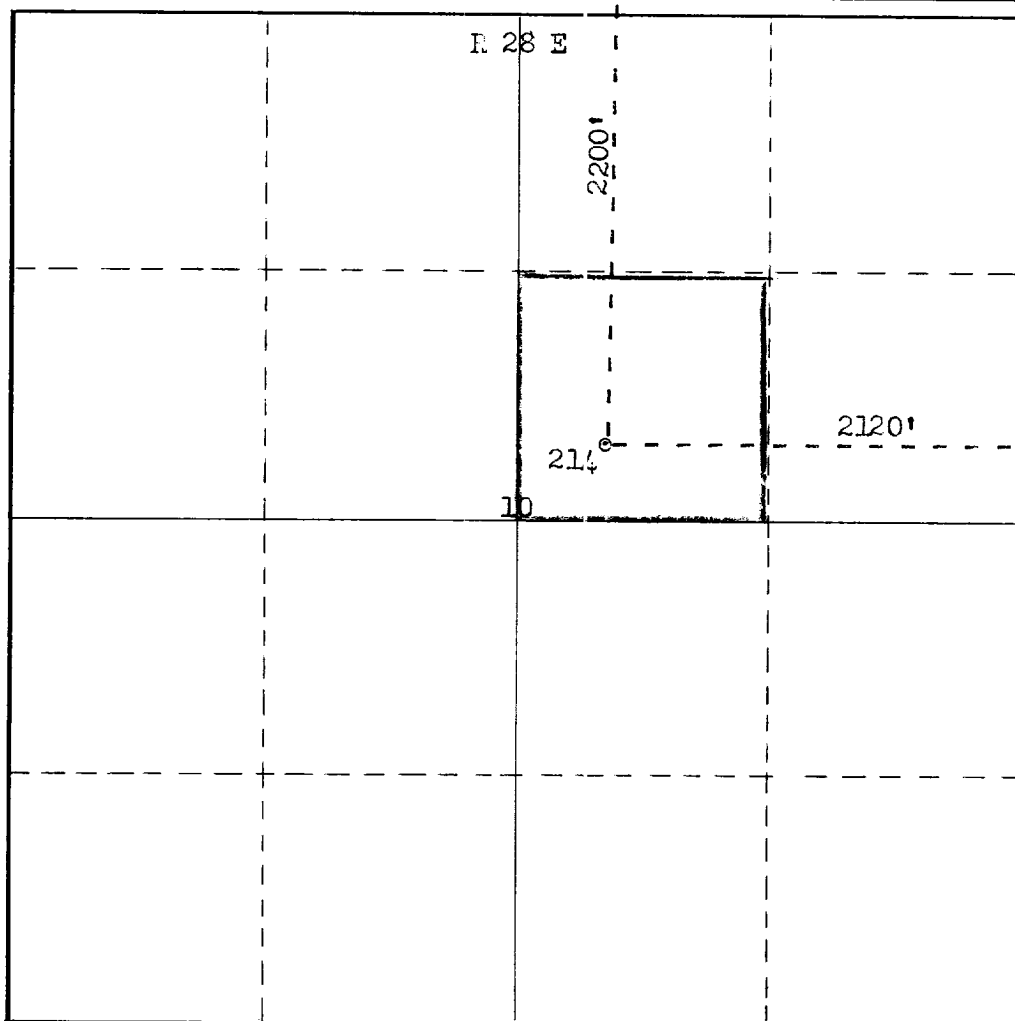
Operator DEPCO, Incorporated			Lease State 648		Well No. 214	
Unit Letter G	Section 10	Township 19 South	Range 28 East	County O. C. C. ARTESIA, OFFICE Eddy		
Actual Footage Location of Well: 2200 feet from the North line and 2120 feet from the East line						
Ground Level Elev. 3498	Producing Formation Grayburg		Pool Artesia		Dedicated Acreage: Acres	

1. Outline the acreage dedicated to the subject well by colored pencil or hachure marks on the plat below.
2. If more than one lease is dedicated to the well, outline each and identify the ownership thereof (both as to working interest and royalty).
3. If more than one lease of different ownership is dedicated to the well, have the interests of all owners been consolidated by communitization, unitization, force-pooling, etc?

☐ Yes ☐ No If answer is "yes," type of consolidation _____

If answer is "no," list the owners and tract descriptions which have actually been consolidated. (Use reverse side of this form if necessary.) _____

No allowable will be assigned to the well until all interests have been consolidated (by communitization, unitization, forced-pooling, or otherwise) or until a non-standard unit, eliminating such interests, has been approved by the Commission.



CERTIFICATION

I hereby certify that the information contained herein is true and complete to the best of my knowledge and belief.

Name
D. C. Bizzell
Position
District Superintendent
Company
DEPCO, Inc.
Date
July 27, 1966

I hereby certify that the well location shown on this plat was plotted from field notes of actual surveys made by me or under my supervision, and that the same is true and correct to the best of my knowledge and belief.

Date Surveyed
July 28, 1966
Registered Professional Engineer and/or Land Surveyor
NEW MEXICO

James H. Brown
Certificate No.
N.M.L.S.No. 542