

UNITED STATES
DEPARTMENT OF THE INTERIOR
GEOLOGICAL SURVEY

30-015-20318

5. LEASE DESIGNATION AND SERIAL NO.

LC 029388 (d)

6. IF INDIAN, ALLOTTEE OR TRIBE NAME

7. UNIT AGREEMENT NAME

8. FARM OR LEASE NAME

Johnson "B" Fed. A/C 2

9. WELL NO.

3

10. FIELD AND POOL, OR WILDCAT

Shugart Yates 7 Rvrs.
Queen Grayburg

11. SEC., T., R., M., OR BLK.
AND SURVEY OR AREA

Sec. 15, T-18S, R-31E

12. COUNTY OR PARISH 13. STATE

Eddy New Mexico

APPLICATION FOR PERMIT TO DRILL, DEEPEN, OR PLUG BACK

1a. TYPE OF WORK

DRILL ☒

DEEPEN ☐

PLUG BACK ☐

b. TYPE OF WELL

OIL WELL ☒

GAS WELL ☐

OTHER

SINGLE ZONE ☒

MULTIPLE ZONE ☐

2. NAME OF OPERATOR

Marathon Oil Company

3. ADDRESS OF OPERATOR

P.O. Box 2409, Hobbs, New Mexico 88240

4. LOCATION OF WELL (Report location clearly and in accordance with any State requirements.)*

At surface

660' FEL & 990' FSL, Sec. 15, T-18S, R-31E.

At proposed prod. zone

Same

14. DISTANCE IN MILES AND DIRECTION FROM NEAREST TOWN OR POST OFFICE*

15. DISTANCE FROM PROPOSED*

LOCATION TO NEAREST PROPERTY OR LEASE LINE, FT.
(Also to nearest drlg. unit line, if any)

660'

16. NO. OF ACRES IN LEASE

320

17. NO. OF ACRES ASSIGNED TO THIS WELL

40

18. DISTANCE FROM PROPOSED LOCATION* TO NEAREST WELL, DRILLING, COMPLETED, OR APPLIED FOR, ON THIS LEASE, FT.

4906'

19. PROPOSED DEPTH

3450'

20. ROTARY OR CABLE TOOLS

Rotary

21. ELEVATIONS (Show whether DF, RT, GR, etc.)

GR 3695'

22. APPROX. DATE WORK WILL START*

7-6-70

23. PROPOSED CASING AND CEMENTING PROGRAM

SIZE OF HOLE	SIZE OF CASING	WEIGHT PER FOOT	SETTING DEPTH	QUANTITY OF CEMENT
11"	8-5/8"	24#	760'	350 sacks - Circ. cem. to surface
7-7/8"	5-1/2"	15.5#	3450'	375 sacks.

Plan to drill to Queen formation to a depth of approximately 3450'.
All casing will be cemented and tested by approved methods.

Blow out equipment to be used is: 900 Series preventors with pipe
rams and blind rams.

RECEIVED

JUL 2 1970

O. C. C.

ARTESIA, OFFICE

RECEIVED
JUL 1 - 1970
U. S. GEOLOGICAL SURVEY
ARTESIA, NEW MEXICO

IN ABOVE SPACE DESCRIBE PROPOSED PROGRAM: If proposal is to deepen or plug back, give data on present productive zone and proposed new productive zone. If proposal is to drill or deepen directionally, give pertinent data on subsurface locations and measured and true vertical depths. Give blowout preventer program, if any.

24.

SIGNED

C. A. Helton Jr.

TITLE

Area Supt.

DATE

6-30-70.

(This space for Federal or State office use)

PERMIT NO.

APPROVAL DATE

DATE

APPROVED
JUL 1 - 1970
H. L. BEEKMAN
ACTING DISTRICT ENGINEER

THIS APPROVAL IS RESCINDED IF OPERATIONS ARE NOT COMMENCED WITHIN 3 MONTHS.
OCT 1 - 1970
See Instructions On Reverse Side

NEW MEXICO OIL CONSERVATION COMMISSION
WELL LOCATION AND ACREAGE DEDICATION PLAT

Form C-102
Supersedes C-128
Effective 1-1-65

All distances must be from the outer boundaries of the Section.

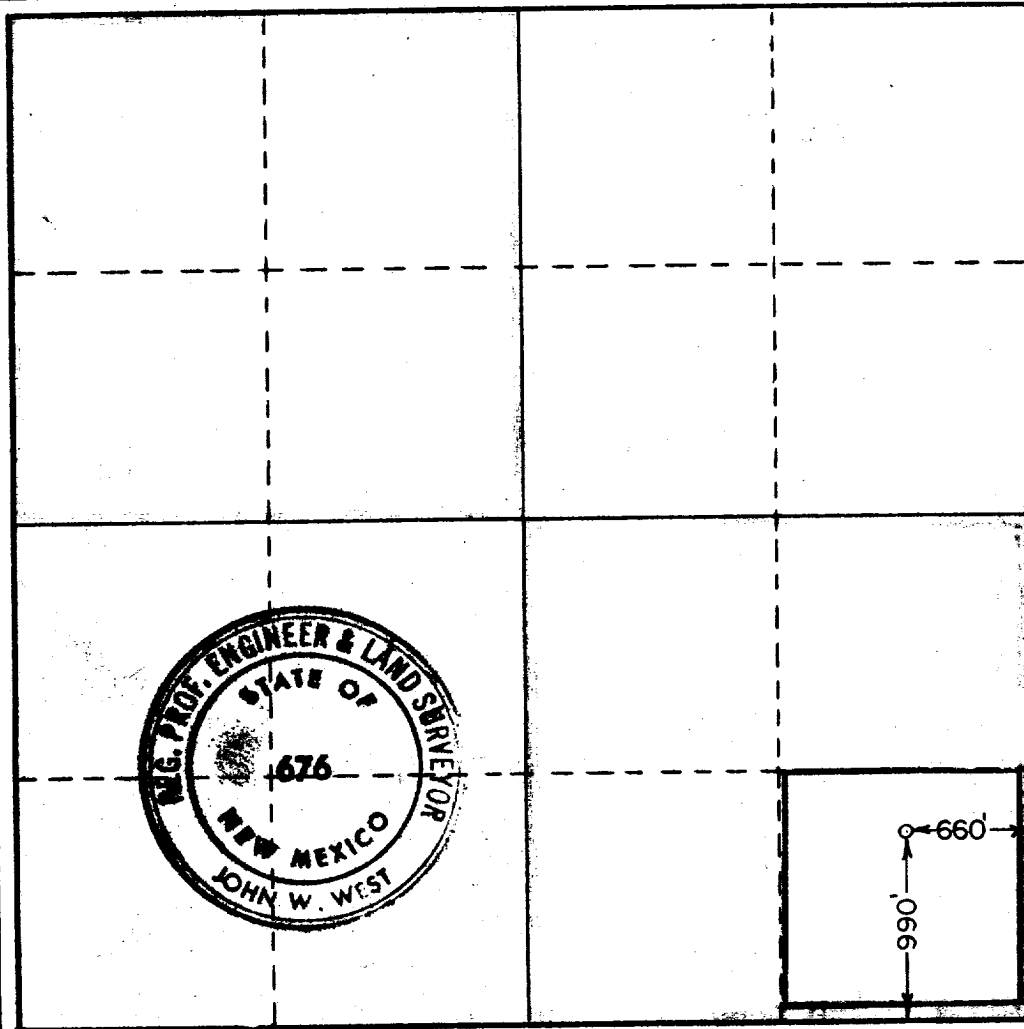
Operator MARATHON OIL CO.		Lease JOHNSON "B" FEDERAL ACCOUNT 2 <i>A/C 2</i>		Well No. 3
Unit Letter P	Section 15	Township 18 SOUTH	Range 31 EAST	County EDDY
Actual Footage Location of Well: 990 feet from the SOUTH line and 660 feet from the EAST line				
Ground Level Elev. 3695	Producing Formation QUEEN	Pool SHUGART YATES 7 RIVERS QUEEN GRAYBURN	Dedicated Acreage: 40 Acres	

- Outline the acreage dedicated to the subject well by colored pencil or hatchure marks on the plat below.
- If more than one lease is dedicated to the well, outline each and identify the ownership thereof (both as to working interest and royalty).
- If more than one lease of different ownership is dedicated to the well, have the interests of all owners been consolidated by communitization, unitization, force-pooling, etc?

☐ Yes ☐ No If answer is "yes," type of consolidation _____

If answer is "no," list the owners and tract descriptions which have actually been consolidated. (Use reverse side of this form if necessary.) _____

No allowable will be assigned to the well until all interests have been consolidated (by communitization, unitization, forced-pooling, or otherwise) or until a non-standard unit, eliminating such interests, has been approved by the Commission.



CERTIFICATION

I hereby certify that the information contained herein is true and complete to the best of my knowledge and belief.

J. W. Younger
Name

J. W. YOUNGER
Position

AREA PETROLEUM ENGINEER
Company

MARATHON OIL COMPANY

Date
6-23-70

I hereby certify that the well location shown on this plat was plotted from field notes of actual surveys made by me or under my supervision, and that the same is true and correct to the best of my knowledge and belief.

Date Surveyed
JUNE 23, 1970

Registered Professional Engineer and/or Land Surveyor

John W. West
Certificate No.

676

0 320 660 990 1320 1660 1990 2310 2640 2000 1800 1600 1400 1200 1000 800 600 400 200 0

