

District I  
PO Box 1980, Hobbs, NM 88241-1980  
District II  
PO Drawer DD, Artesia, NM 88211-0719  
District III  
1000 Rio Brazos Rd., Aztec, NM 87410  
District IV  
PO Box 2088, Santa Fe, NM 87504-2088

State of New Mexico  
Energy, Minerals & Natural Resources Department

OIL CONSERVATION DIVISION  
PO Box 2088  
Santa Fe, NM 87504-2088

C/SF  
Bum  
SV  
Form C-101  
Revised February 10, 1994  
Instructions on back  
Submit to Appropriate District Office  
State Lease - 6 Copies  
Fee Lease - 5 Copies

☐ AMENDED REPORT

APPLICATION FOR PERMIT TO DRILL, RE-ENTER, DEEPEN, PLUGBACK, OR ADD A ZONE

Operator Name and Address. YATES PETROLEUM CORPORATION 105 South Fourth Street Artesia, New Mexico 88210		OGRID Number 025575
Property Code 16482	Property Name Aparejo "APA" State Com.	API Number -015 - 20680
		Well No. #2

Surface Location									
UL or lot no.	Section	Township	Range	Lot Idn	Feet from the	North/South line	Feet from the	East/West line	County
F	16	19S	25E		2080	North	1780	West	Eddy

Proposed Bottom Hole Location If Different From Surface									
UL or lot no.	Section	Township	Range	Lot Idn	Feet from the	North/South line	Feet from the	East/West line	County
Proposed Pool 1 Dagger Draw; Upper Penn, North 15472					Proposed Pool 2				

Work Type Code E	Well Type Code O	Cable/Rotary Cable	Lease Type Code S	Ground Level Elevation 3485
Multiple No	Proposed Depth 8018	Formation Canyon	Contractor Not Determined	Spud Date ASAP

Proposed Casing and Cement Program					
Hole Size	Casing Size	Casing weight/foot	Setting Depth	Sacks of Cement	Estimated TOC
17 1/2"	12 3/4"	34#	390	400 sx	in place
11"	8 5/8"	24#	1147	525 sx	in place
8 5/8"	5 1/2"	17#	5455	375 sx	in place

Describe the proposed program. If this application is to DEEPEN or PLUG BACK give the data on the present productive zone and proposed new productive zone. Describe the blowout prevention program, if any. Use additional sheets if necessary.  
Yates Petroleum Corporation plans to re-enter the old Roger C. Hanks well Kincaid State Com. #1 plugged and abandoned in September 6, 1979. We will clean out cement plugs to 5 1/2" stub at 5455. Tie 5 1/2" back to surface and clean out to original Canyon perts 7774'-7848'. Possibly modify completion interval and acidize well.

Post ID-1  
3-24-95  
New Lic. (re-entry)

I hereby certify that the information given above is true and complete to the best of my knowledge and belief. Signature: <i>Ken Beardemphl</i>		OIL CONSERVATION DIVISION	
Printed name: Ken Beardemphl		Approved by:	
Title: Landman		Title: ORIGINAL SIGNED BY TIM W. GUM DISTRICT II SUPERVISOR	
Date: 3-13-95	Phone: 505-748-1471	Approval Date: MAR 15 1995	Expiration Date: 9-15-95
		Conditions of Approval: Attached <input type="checkbox"/>	

District I  
PO Box 1980, Hobbs, NM 88241-1980  
District II  
PO Drawer DD, Artesia, NM 88211-0719  
District III  
1000 Rio Brazos Rd., Aztec, NM 87410  
District IV  
PO Box 2088, Santa Fe, NM 87504-2088

State of New Mexico  
Energy, Minerals & Natural Resources Department

OIL CONSERVATION DIVISION  
PO Box 2088  
Santa Fe, NM 87504-2088

Form C-102  
Revised February 10, 1994  
Instructions on back  
Submit to Appropriate District Office  
State Lease - 4 Copies  
Fee Lease - 3 Copies

☐ AMENDED REPORT

WELL LOCATION AND ACREAGE DEDICATION PLAT

<sup>1</sup> API Number 30-015-20680		<sup>2</sup> Pool Code 15472	<sup>3</sup> Pool Name Dagger Draw, Upper Penn, North	
<sup>4</sup> Property Code	<sup>5</sup> Property Name Aparejo "APA" State Com.			<sup>6</sup> Well Number #2
<sup>7</sup> OGRID No. 025575	<sup>8</sup> Operator Name YATES PETROLEUM CORPORATION			<sup>9</sup> Elevation 3485

<sup>10</sup> Surface Location

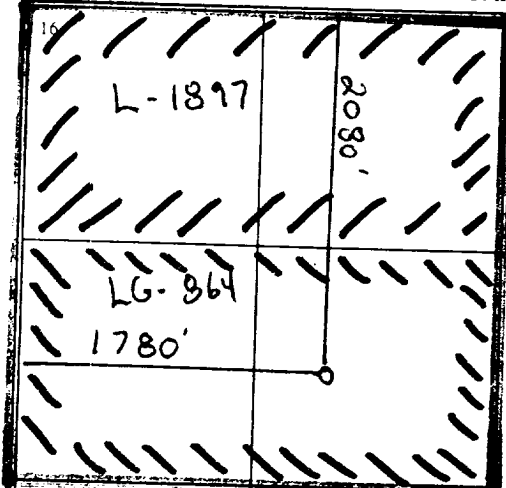
UL or lot no.	Section	Township	Range	Lot Idn	Feet from the	North/South line	Feet from the	East/West line	County
F	16	19S	25E		2080	North	1780	West	Eddy

<sup>11</sup> Bottom Hole Location If Different From Surface

UL or lot no.	Section	Township	Range	Lot Idn	Feet from the	North/South line	Feet from the	East/West line	County

<sup>12</sup> Dedicated Acres 160	<sup>13</sup> Joint or Infill	<sup>14</sup> Consolidation Code	<sup>15</sup> Order No.
--------------------------------------	-------------------------------	----------------------------------	-------------------------

NO ALLOWABLE WILL BE ASSIGNED TO THIS COMPLETION UNTIL ALL INTERESTS HAVE BEEN CONSOLIDATED  
OR A NON-STANDARD UNIT HAS BEEN APPROVED BY THE DIVISION

	<sup>17</sup> OPERATOR CERTIFICATION I hereby certify that the information contained herein is true and complete to the best of my knowledge and belief.  Signature <u>Ken Beardemphl</u> Printed Name Ken Beardemphl Title Landman Date 3-13-95			
	<sup>18</sup> SURVEYOR CERTIFICATION I hereby certify that the well location shown on this plat was plotted from field notes of actual surveys made by me or under my supervision, and that the same is true and correct to the best of my belief.  Date of Survey Signature and Seal of Professional Surveyer: Refer to original plat (attached)  Certificate Number			

NEW MEXICO OIL CONSERVATION COMMISSION  
WELL LOCATION AND ACREAGE DEDICATION PLAT

JUN 16 1972

Form C-102  
Supersedes C-121  
Effective 1-1-65

O. G. C.

ARTESIA, OFFICE

\* AMENDED

All distances must be from the outer boundaries of the Section.

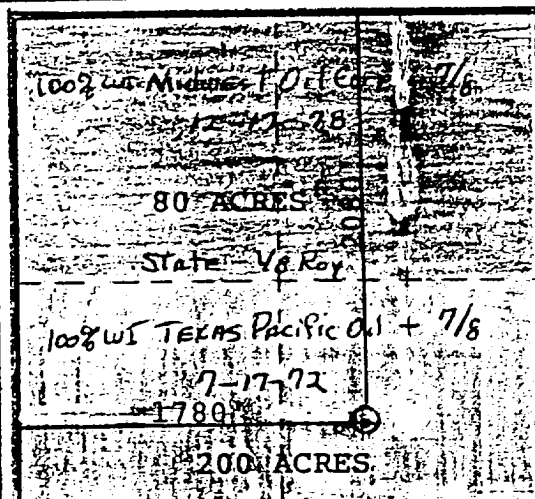
Operator <b>WESTERN STATES PRODUCING CO.</b>			Lease <b>KINCAID STATE GAS COM</b>		Well No. <b>1</b>
Unit Letter <b>F</b>	Section <b>16</b>	Township <b>19 SOUTH</b>	Range <b>25 EASTX</b>	County <b>EDDY</b>	
Actual Footage Location of Well: <b>2080</b> feet from the <b>NORTH</b> line and <b>1780</b> feet from the <b>WEST</b> line					
Ground Level Elev. <b>3485'</b>	Producing Formation <b>Morrow</b>		Pool <b>Boyd (Morrow) Gas and</b>	Dedicated Acreage: <b>320</b> Acres	

1. Outline the acreage dedicated to the subject well by colored pencil or hatchure marks on the plat below.
2. If more than one lease is dedicated to the well, outline each and identify the ownership thereof (both as to working interest and royalty).
3. If more than one lease of different ownership is dedicated to the well, have the interests of all owners been consolidated by communitization, unitization, force-pooling, etc?

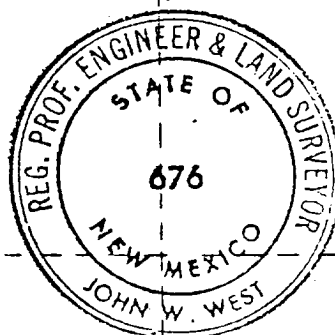
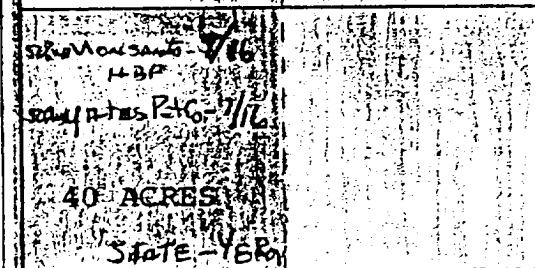
☐ Yes ☒ No If answer is "yes," type of consolidation \_\_\_\_\_

If answer is "no," list the owners and tract descriptions which have actually been consolidated. (Use reverse side of this form if necessary.) NONE - COMMUNITIZATION AGREEMENTS BEING EXECUTED

No allowable will be assigned to the well until all interests have been consolidated (by communitization, unitization, forced-pooling, or otherwise) or until a non-standard unit, eliminating such interests, has been approved by the Commission. \*PLEASE NOTE THE CHANGE IN FOOTAGE FROM THE SECTION LINES.



Unit working interest  
Western States = 75%  
Midwest Oil Co = 25%



CERTIFICATION

I hereby certify that the information contained herein is true and complete to the best of my knowledge and belief.

*Don C. Bennett*

Name Don C. Bennett  
Operations manager

Position

Western States Prod. Co.

Company

June 16, 1972

Date

I hereby certify that the well location shown on this plat was plotted from field notes of actual surveys made by me or under my supervision, and that the same is true and correct to the best of my knowledge and belief.

Date Surveyed

JUNE 7, 1972

Registered Professional Engineer  
and/or Land Surveyor

*John W. West*

State - V. Roy