

NEW MEXICO OIL CONSERVATION COMMISSION
WELL LOCATION AND ACREAGE DEDICATION PLAT

Form O-1-102
Superseded O-124
Effective 1-1-73

All distances must be from the outer boundaries of the Section

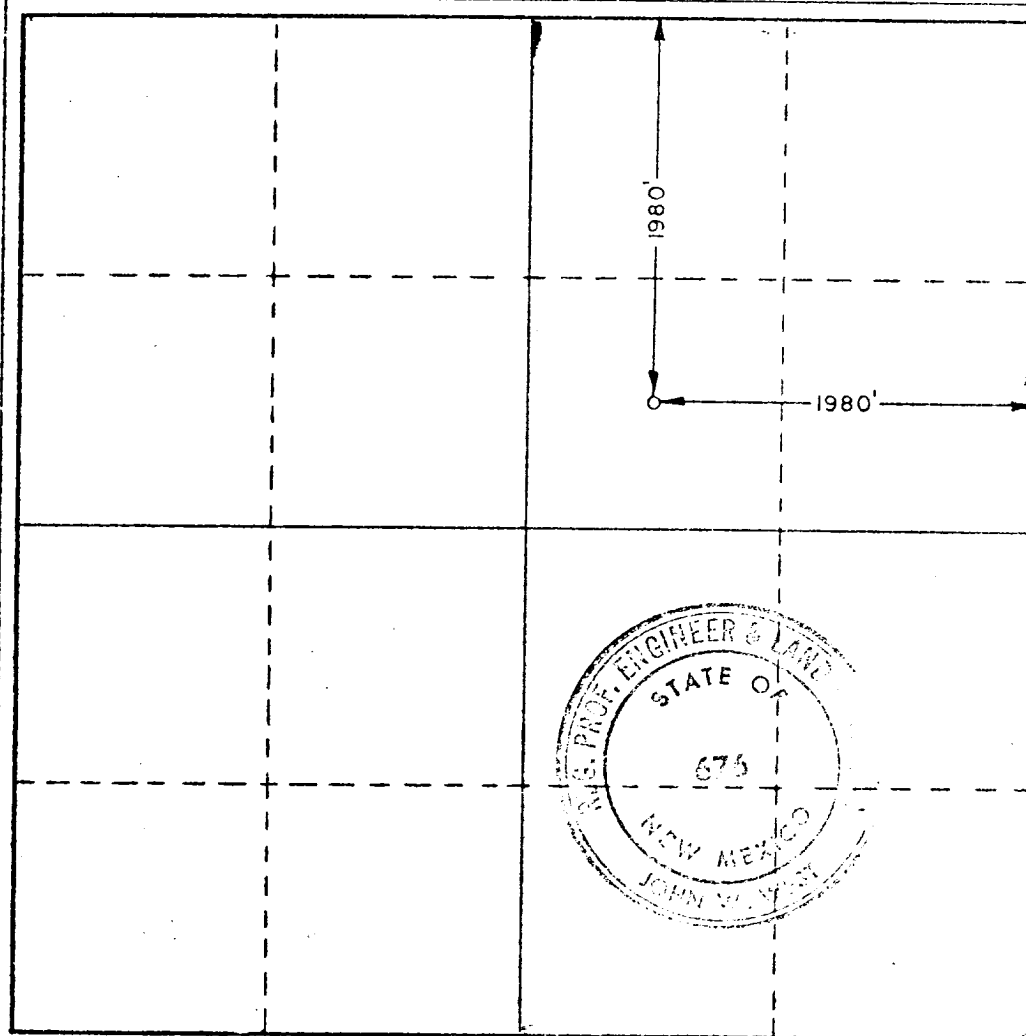
Operator THE PETROLEUM CORPORATION		Lease PARKWAY WEST UNIT		Well No. 2
Unit Letter G	Section 29	Township 19 SOUTH	Range 29 EAST	County EDDY
Actual Footage Location of Well:				
1980 feet from the NORTH line and		1980 feet from the EAST line		
Ground Level Elev. 3287.35	Producing Formation Morrow	Pool Wildcat	Dedicated Acreage 320	

1. Outline the acreage dedicated to the subject well by colored pencil or hatchure marks on the plat below.
2. If more than one lease is dedicated to the well, outline each and identify the ownership thereof (both as to working interest and royalty).
3. If more than one lease of different ownership is dedicated to the well, have the interests of all owners been consolidated by communitization, unitization, force-pooling, etc?

☒ Yes ☐ No If answer is "yes," type of consolidation Unitization

If answer is "no," list the owners and tract descriptions which have actually been consolidated. (Use reverse side of this form if necessary.)

No allowable will be assigned to the well until all interests have been consolidated (by communitization, unitization, forced-pooling, or otherwise) or until a non-standard unit, eliminating such interests, has been approved by the Commission.



CERTIFICATION

I hereby certify that the information contained herein is true and complete to the best of my knowledge and belief.

Name
Larry C. Shannon
Position
Petroleum Engineer
Company
The Petroleum Co.
Date
May 14, 1975

I hereby certify that the well location shown on this plat was plotted from field notes of actual surveys made by me or under my supervision, and that the same is true and correct to the best of my knowledge and belief.

Date Surveyed
OCTOBER 24, 1973

Registered Professional Engineer and/or Land Surveyor

John W. Wat

Certificate No. **676**

