

UNITED STATES  
DEPARTMENT OF THE INTERIOR  
GEOLOGICAL SURVEY

## APPLICATION FOR PERMIT TO DRILL, DEEPEN, OR PLUG BACK

## 1a. TYPE OF WORK

DRILL ☒DEEPEN ☐PLUG BACK ☐

## b. TYPE OF WELL

OIL  
WELL ☐GAS  
WELL ☒

OTHER

SINGLE  
ZONE ☒MULTIPLE  
ZONE ☐

## 2. NAME OF OPERATOR

Yates Petroleum Corporation

## 3. ADDRESS OF OPERATOR

207 So. 4th St., Artesia, New Mexico 88210

## 4. LOCATION OF WELL (Report location clearly and in accordance with any State requirements.)

At surface

1980' FSL & 1980' FWL of Section 20-T19S-R25E  
At proposed prod. zone

## 14. DISTANCE IN MILES AND DIRECTION FROM NEAREST TOWN OR POST OFFICE\*

9 miles West of Lakewood, New Mexico

## 15. DISTANCE FROM PROPOSED\*

LOCATION TO NEAREST  
PROPERTY OR LEASE LINE, FT.  
(Also to nearest drlg. unit line, if any)

660

## 16. NO. OF ACRES IN LEASE

1000

17. NO. OF ACRES ASSIGNED  
TO THIS WELL

320

18. DISTANCE FROM PROPOSED LOCATION\*  
TO NEAREST WELL, DRILLING, COMPLETED,  
OR APPLIED FOR, ON THIS LEASE, FT.

## 19. PROPOSED DEPTH

9500

## 20. ROTARY OR CABLE TOOLS

Rotary

## 21. ELEVATIONS (Show whether DF, RT, GR, etc.)

3549 GR

22. APPROX. DATE WORK WILL START\*  
April 29, 1975

## 23.

## PROPOSED CASING AND CEMENTING PROGRAM

SIZE OF HOLE	SIZE OF CASING	WEIGHT PER FOOT	SETTING DEPTH	QUANTITY OF CEMENT
17 1/2	13 3/8	48#	Approx 350	Circulate
12 1/4	8 5/8	24#	Approx 1150	Circulate
7 7/8	4 1/2 or 5 1/2	10.5-11.6 or 15.5-17#	Approx 9500	200 sx

Propose to drill and test the Morrow and intermediate formations. Approx 350' surface casing to contain gravel and caving, will be set and cemented to surface. Intermediate casing will be set 100' below the Artesian Water Zone. If commercial pay is encountered 4 1/2" or 5 1/2" casing will be run and cemented.

Mud Program: FW Gel and LCM to 1150', fresh water to 5000', KCl water to 7300', flosal and drispak to TD.

BOP Program: BOP's will be installed on Intermediate casing, pipe rams and hydril tested daily, blind rams on trips.

RECEIVED

IN ABOVE SPACE DESCRIBE PROPOSED PROGRAM: If proposal is to deepen or plug back, give data on present productive zone and proposed new productive zone. If proposal is to drill or deepen directionally, give pertinent data on subsurface locations and measured and true vertical depths. Give blowout preventer program, if any.

24.

SIGNED

*Eddie M. Kraljick*

TITLE

Engineer

U.S. GEOLOGICAL SURVEY  
ARTESIA, NEW MEXICO

DATE

April 18, 1975

(This space for Federal or State office use)

PERMIT NO.

SUBJECT TO ATTACHED DEEP WELL CONTROL

REQUIREMENTS DATED

JUN 22 1973

APPROVAL DATE

TITLE

DATE

CONDITIONS OF APPROVAL, IF ANY:

THIS APPROVAL IS RESCINDED IF OPERATIONS  
ARE NOT COMMENCED WITHIN 3 MONTHS.  
EXPIRES JUL 28 1975

\*See Instructions On Reverse Side

DECLARED WATER BASIN  
CEMENT REQUIRED  
CASING MUST BE CIRCULATED

NOTIFY USGS IN SUFFICIENT TIME TO  
WITNESS CEMENTING THE CASING

NL MEXICO OIL CONSERVATION COMMISSION  
WELL LOCATION AND ACREAGE DEDICATION PLAT

Form C-102  
Supersedes C-128  
Effective 1-1-65

All distances must be from the outer boundaries of the Section.

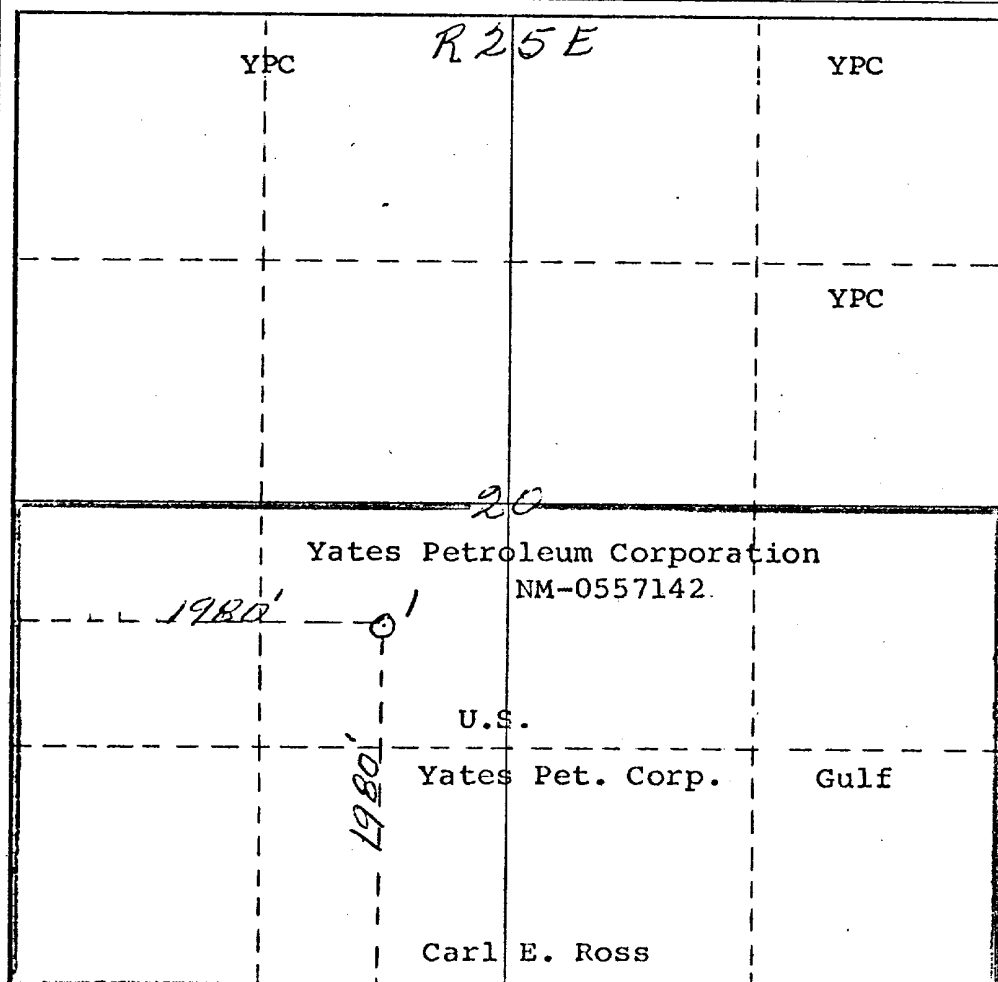
Operator <i>Yates Petroleum Corp</i>		Lease <i>Ross Federal "EG"</i>		Well No. <i>1</i>	
Unit Letter <i>K</i>	Section <i>20</i>	Township <i>19 South</i>	Range <i>25 East</i>	County <i>Eddy</i>	
Actual Footage Location of Well: <i>1980</i> feet from the <i>South</i> line and <i>1980</i> feet from the <i>West</i> line					
Ground Level Elev. <i>3549</i>	Producing Formation <i>Penn.</i>	Pool <i>Undesignated</i>	Dedicated Acreage: <i>320</i> Acres		

1. Outline the acreage dedicated to the subject well by colored pencil or hachure marks on the plat below.
2. If more than one lease is dedicated to the well, outline each and identify the ownership thereof (both as to working interest and royalty).
3. If more than one lease of different ownership is dedicated to the well, have the interests of all owners been consolidated by communitization, unitization, force-pooling, etc?

☒ Yes ☐ No If answer is "yes," type of consolidation *Communitized*

If answer is "no," list the owners and tract descriptions which have actually been consolidated. (Use reverse side of this form if necessary.)

No allowable will be assigned to the well until all interests have been consolidated (by communitization, unitization, forced-pooling, or otherwise) or until a non-standard unit, eliminating such interests, has been approved by the Commission.



CERTIFICATION

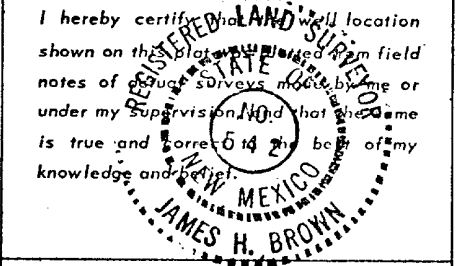
I hereby certify that the information contained herein is true and complete to the best of my knowledge and belief.

*Eddie M. Halyard*  
Name  
Engineer

Position  
Yates Petroleum Corp.  
Company

Date  
April 18, 1975

I hereby certify that the well location shown on this plat was obtained from field notes of accurate surveys made by me or under my supervision and that the same is true and correct to the best of my knowledge and belief.



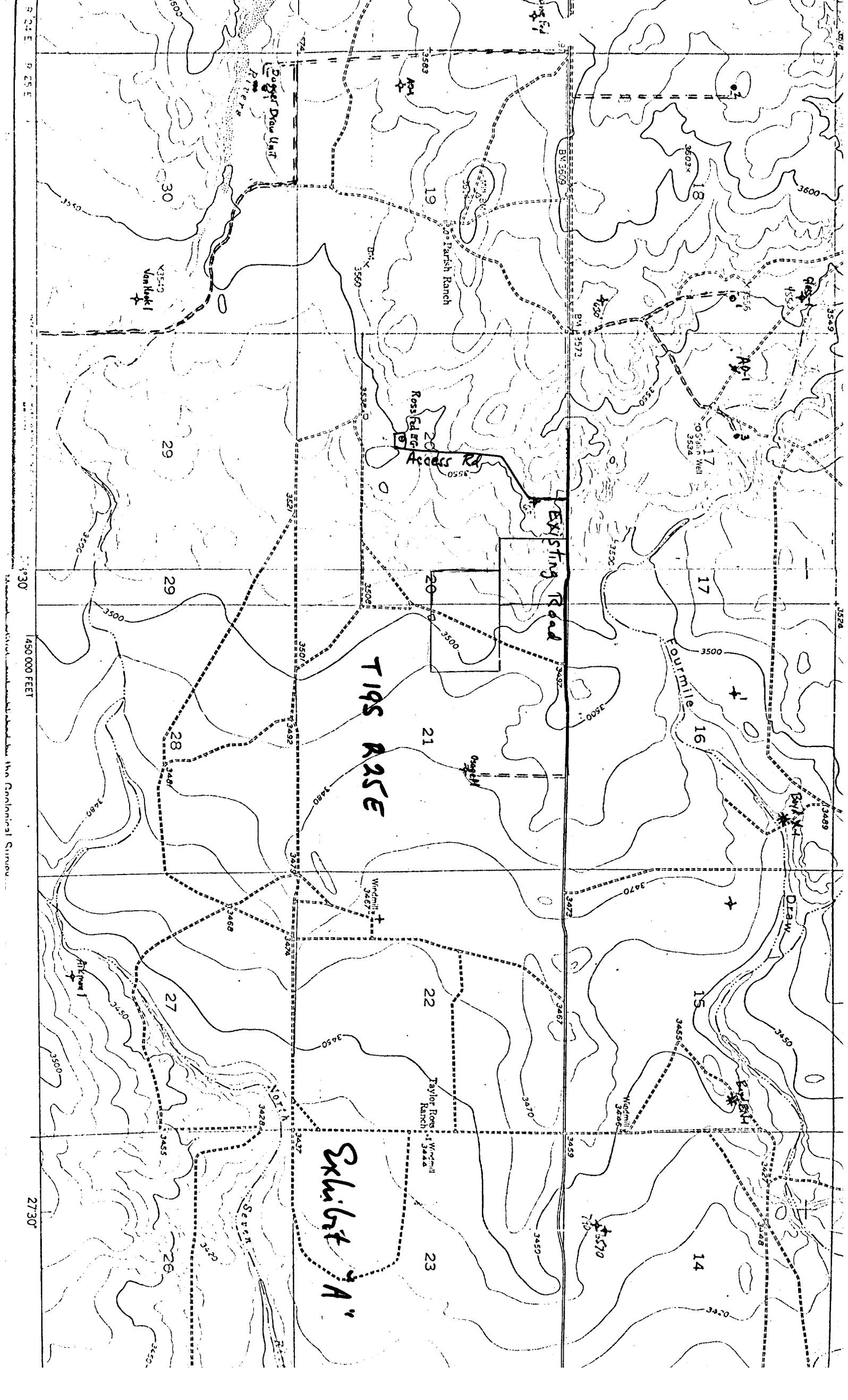
Date Surveyed  
*April 11<sup>th</sup> 1975*  
Registered Professional Engineer  
and/or Land Surveyor

*James H. Brown*  
Certificate No. *542*

YA' 3 PETROLEUM CORPORATION  
Ross Federal "EG" No. 1 Com  
1980' FSL & 1980' .FWL, Sec. 20-19S-25E  
Eddy County, New Mexico

Development plan to accompany "Applications to Drill, Federal Lease".  
12-Point Plan.

1. EXISTING ROADS: See Plat (Exhibit A) East-West County maintained road along North section line, and abandoned access road.
2. PLANNED ACCESS ROADS: See Plat (Exhibit A) Extension of abandoned access road South-West and South across rocky terrain to location.
3. LOCATION OF WELLS: See Plat (Exhibit A) Wildcat location - several dry holes within 1½ mile radius except Hanks - Dagger Draw Unit.
4. LATERAL ROADS TO LOCATION: See Plat (Exhibit A) Non planned. There exists a ranch trail to windmill approx 1000' SW of location but will not disturb.
5. LOCATION OF TANK BATTERY & FLOWLINES: See Plat (Exhibit C) Will set tanks on high ground with turn around on pad.
6. LOCATION & TYPES OF WATER SUPPLY: See Plat (Exhibit A) Will truck drilling water from Frontier Trading Post on US 285, approx 8 miles.
7. METHODS FOR HANDLING WASTE DISPOSAL: See Sketch (Exhibit C) Trash and engine oil in burn pit.
8. LOCATION OF CAMPS: Not Applicable.
9. LOCATION OF AIRSTRIPS: Not Applicable.
10. LOCATION LAYOUT (rig, tanks, pits, racks, etc): See Sketch (Exhibit C)
11. PLANS FOR RESTORATION OF SURFACE: Mud pits to be fenced until dry, then leveled. Upon abandonment, surface to be cleaned, leveled and returned to near origianl. Location on rocky soil, will not require re-seeding.
12. OTHER ENVIRONMENT INFORMATION: Patented surface. Rocky soil with needle grass, yellow tops, occassional greasewood and cactus. Ranch trail across pasture to be undistrubed. Rancher Carl Ross compensated and in concurrence with development and restoration plans.



YPC - Ross Federal EG No. 1 Com  
 1990/s 1990/w Sec 20-19-25  
 Eddy County, N. Mex

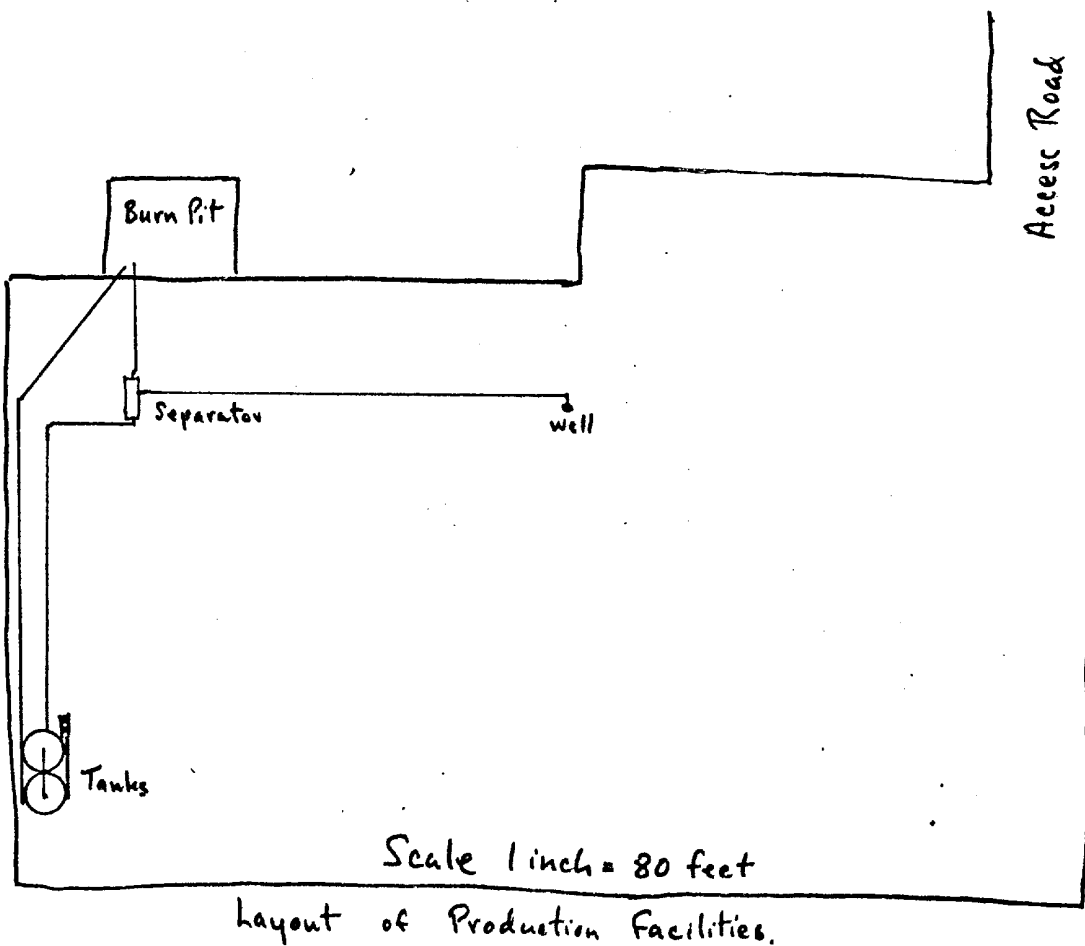
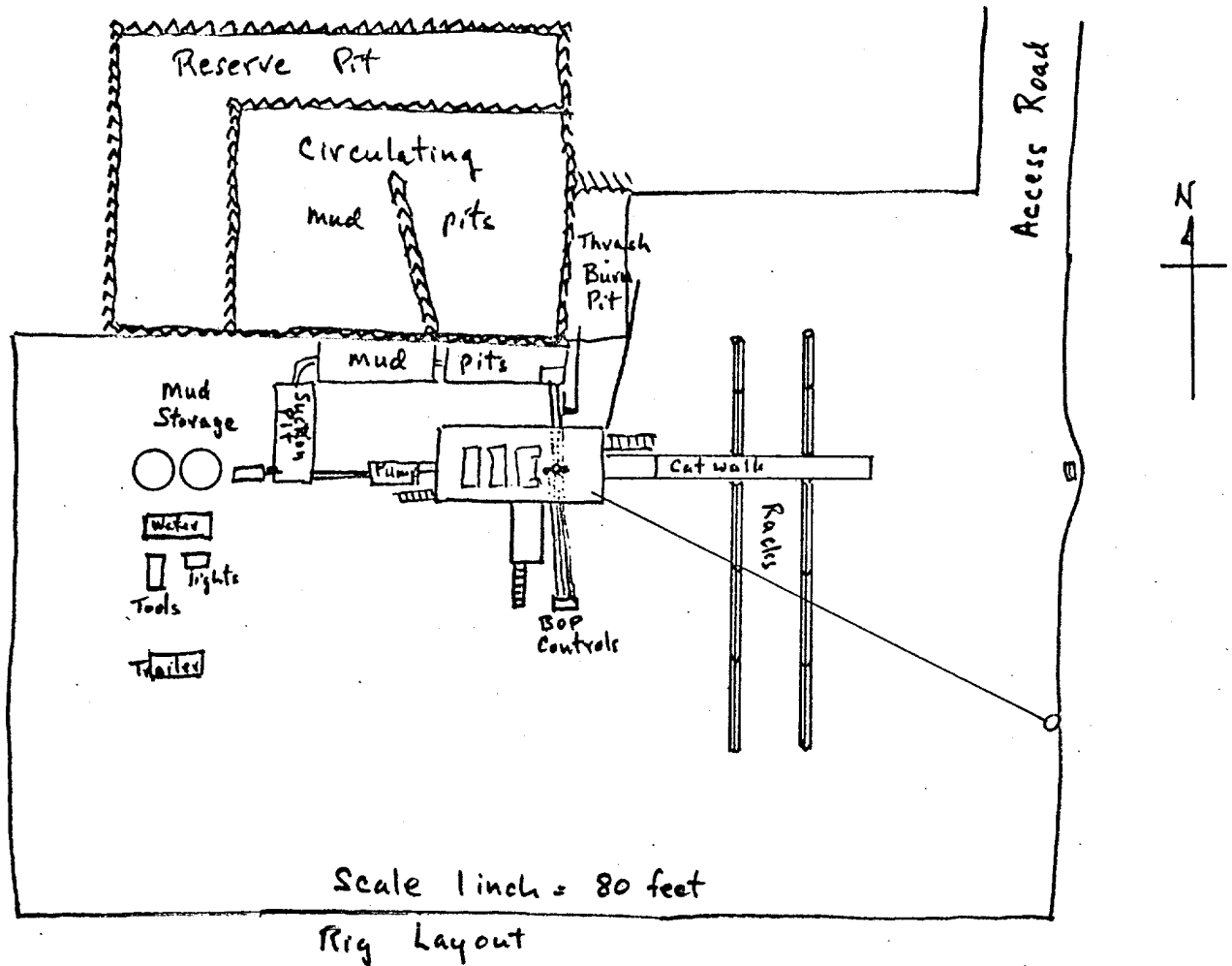
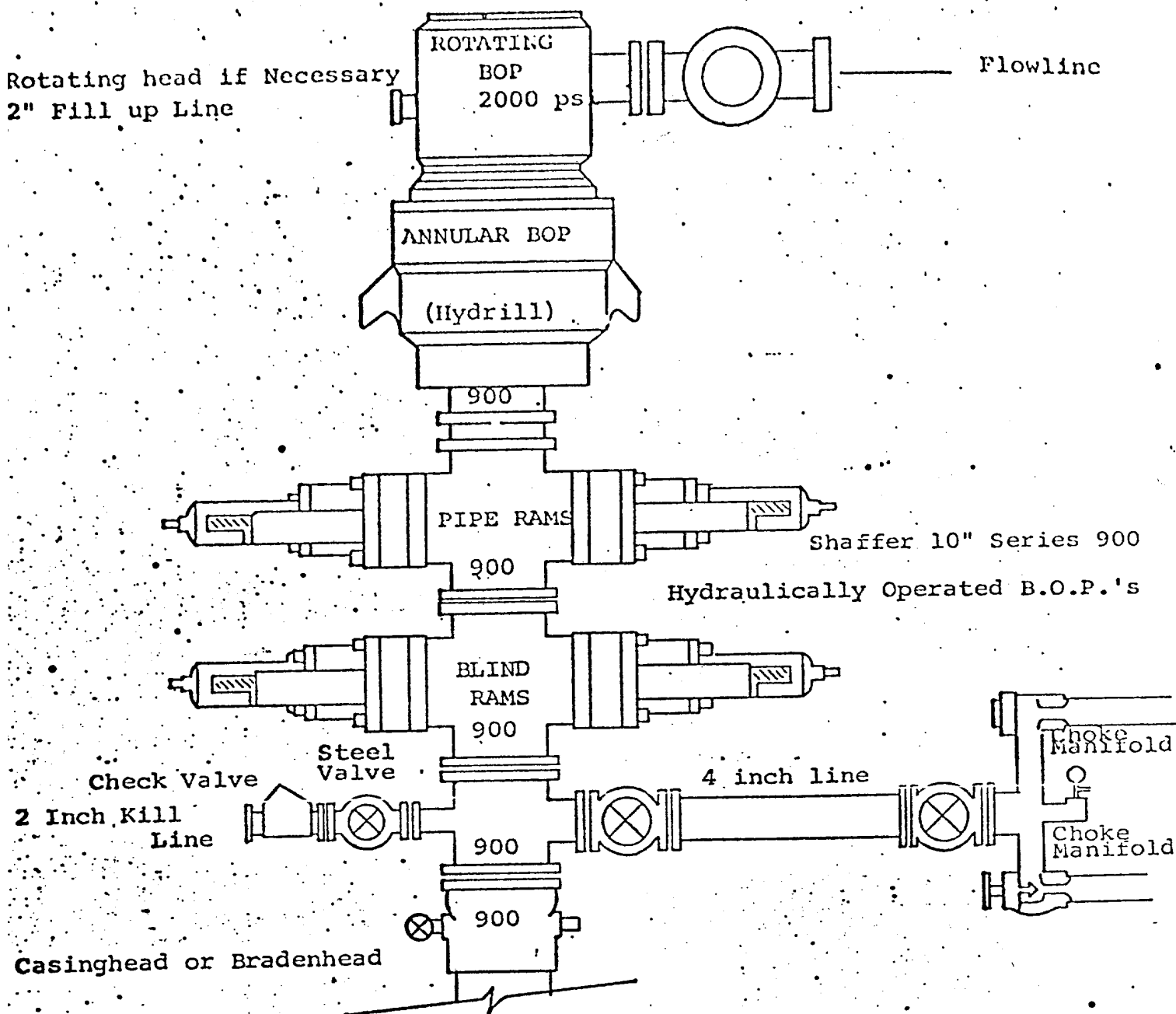


Exhibit "C"

DIAGRAMMATIC SKETCH OF 3000 PSI BOP ASSEMBLY



THE FOLLOWING CONSTITUTE MINIMUM BLOWOUT PREVENTER REQUIREMENTS

1. All preventers to be hydraulically operated with secondary manual controls installed prior to drilling out from under casing.
2. Choke outlet to be a minimum of 4" diameter.
3. Kill line to be of all steel construction of 2" minimum diameter...
4. All connections from operating manifolds to preventers to be all steel hole or tube a minimum of one inch in diameter.
5. The available closing pressure shall be at least 15% in excess of that required with sufficient volume to operate the B.O.P.'s.
6. All Connections to and from preventer to have a pressure rating equivalent to that of the B.O.P.'s.
7. Inside blowout preventer to be available on rig floor.
8. Operating controls located a safe distance from the rig floor.
9. Hole must be kept filled on trips below intermediate casing. Operator not responsible for blowouts resulting from not keeping hole full.