

UNITED STATES
DEPARTMENT OF THE INTERIOR
GEOLOGICAL SURVEY

APPLICATION FOR PERMIT TO DRILL, DEEPEN, OR PLUG BACK

1a. TYPE OF WORK DRILL ☐ DEEPEN ☐ PLUG BACK ☒

b. TYPE OF WELL
OIL WELL ☐ GAS WELL ☒ OTHER ☐ SINGLE ZONE ☐ MULTIPLE ZONE ☐

2. NAME OF OPERATOR Yates Petroleum Corporation

3. ADDRESS OF OPERATOR 207 South 4th St., Artesia, NM 88210

4. LOCATION OF WELL (Report location clearly and in accordance with any State requirements)
At surface 1980 FSL & 1980 FWL, Sec. 20-19S-25E
At proposed prod. zone

14. DISTANCE IN MILES AND DIRECTION FROM NEAREST TOWN OR POST OFFICE*

15. DISTANCE FROM PROPOSED* LOCATION TO NEAREST PROPERTY OR LEASE LINE, FT. (Also to nearest drlg. unit line, if any)

16. NO. OF ACRES IN LEASE

17. NO. OF ACRES ASSIGNED TO THIS WELL

18. DISTANCE FROM PROPOSED LOCATION* TO NEAREST WELL, DRILLING, COMPLETED, OR APPLIED FOR, ON THIS LEASE, FT.

19. PROPOSED DEPTH

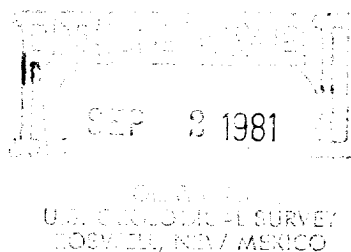
20. ROTARY OR CABLE TOOLS

21. ELEVATIONS (Show whether DF, RT, GR, etc.) 3563' KB

22. APPROX. DATE WORK WILL START* Soon as approved

PROPOSED CASING AND CEMENTING PROGRAM				
SIZE OF HOLE	SIZE OF CASING	WEIGHT PER FOOT	SETTING DEPTH	QUANTITY OF CEMENT
17-1/2	13-3/8	48#	293	250 SX
12-1/4	8-5/8	24#	1064	600 SX
7-7/8	4-1/2	10.5 & 11.6#	9441	490 SX

Production has declined to less than 10 mcfpd from present perforations 9374-84'. We propose to temporarily abandon the Chester completion and recomplete in the Strawn formation. Will set a RBP at about 9300' and another RBP above the Morrow pay at about 9000'. Will perforate and stimulate the Strawn as needed for production at 8575-8587'.



IN ABOVE SPACE DESCRIBE PROPOSED PROGRAM: If proposal is to deepen or plug back, give data on present productive zone and proposed new productive zone. If proposal is to drill or deepen directionally, give pertinent data on subsurface locations and measured and true vertical depths. Give blowout preventer program, if any.

24. SIGNED Eddie L. Wadsworth TITLE Engineer DATE 8-28-81

(This space for Federal or State Approval)

PERMIT NO. (Orig. Sgd.) PETER W. CHESTER

APPROVAL DATE

APPROVED BY SEP 4 1981

TITLE

DATE

CONDITIONS OF APPROVAL, IF ANY

FOR
JAMES A. GILLHAM
DISTRICT SUPERVISOR

*See Instructions On Reverse Side

NEW MEXICO OIL CONSERVATION COMMISSION
WELL LOCATION AND ACREAGE DEDICATION PLAT

Form C-102
Supersedes C-128
Effective 1-1-65

All distances must be from the outer boundaries of the Section.

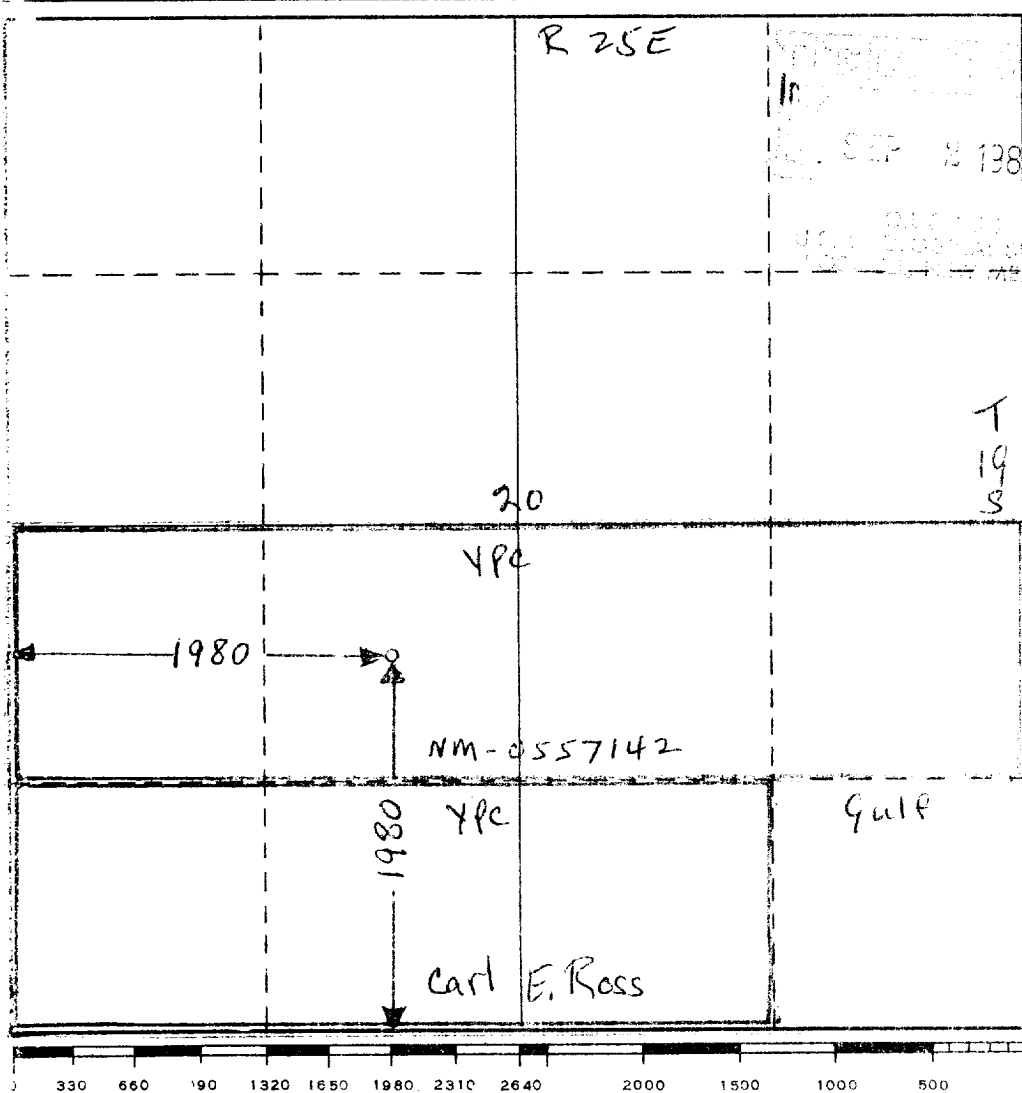
Operator Yates Petroleum Corp		Lease Ross EE Federal "EG" Co.		Well No. NM 0557142	
Unit Letter K	Section 20	Township 19-S	Range 25-E	County Eddy	
Actual Footage Location of Well: 1980 feet from the South line and 1980 feet from the West line					
Ground Level Elev: Strawn		Producing Formation Wildest Strawn		Dedicated Acreage: 320 Acres	

1. Outline the acreage dedicated to the subject well by colored pencil or hatchure marks on the plat below.
2. If more than one lease is dedicated to the well, outline each and identify the ownership thereof (both as to working interest and royalty).
3. If more than one lease of different ownership is dedicated to the well, have the interests of all owners been consolidated by communitization, unitization, force-pooling, etc?

☒ Yes ☐ No If answer is "yes," type of consolidation Communitization

If answer is "no," list the owners and tract descriptions which have actually been consolidated. (Use reverse side of this form if necessary.)

No allowable will be assigned to the well until all interests have been consolidated (by communitization, unitization, forced-pooling, or otherwise) or until a non-standard unit, eliminating such interests, has been approved by the Commission.



CERTIFICATION	
I hereby certify that the information contained herein is true and complete to the best of my knowledge and belief.	
Name	Eddie M. Mahfood
Position	Engineer
Company	Yates Petroleum Corp
Date	8-30-81
I hereby certify that the well location shown on this plat was plotted from field notes of actual surveys made by me or under my supervision, and that the same is true and correct to the best of my knowledge and belief.	
Refer to Original Plat	
Date Surveyed	
Registered Professional Engineer and/or Land Surveyor	
Certificate No.	