

NEW MEXICO OIL CONSERVATION COMMISSION
WELL LOCATION AND ACREAGE DEDICATION PLAT

Form C-102
Supersedes C-128
Effective 1-1-65

All distances must be from the outer boundaries of the Section.

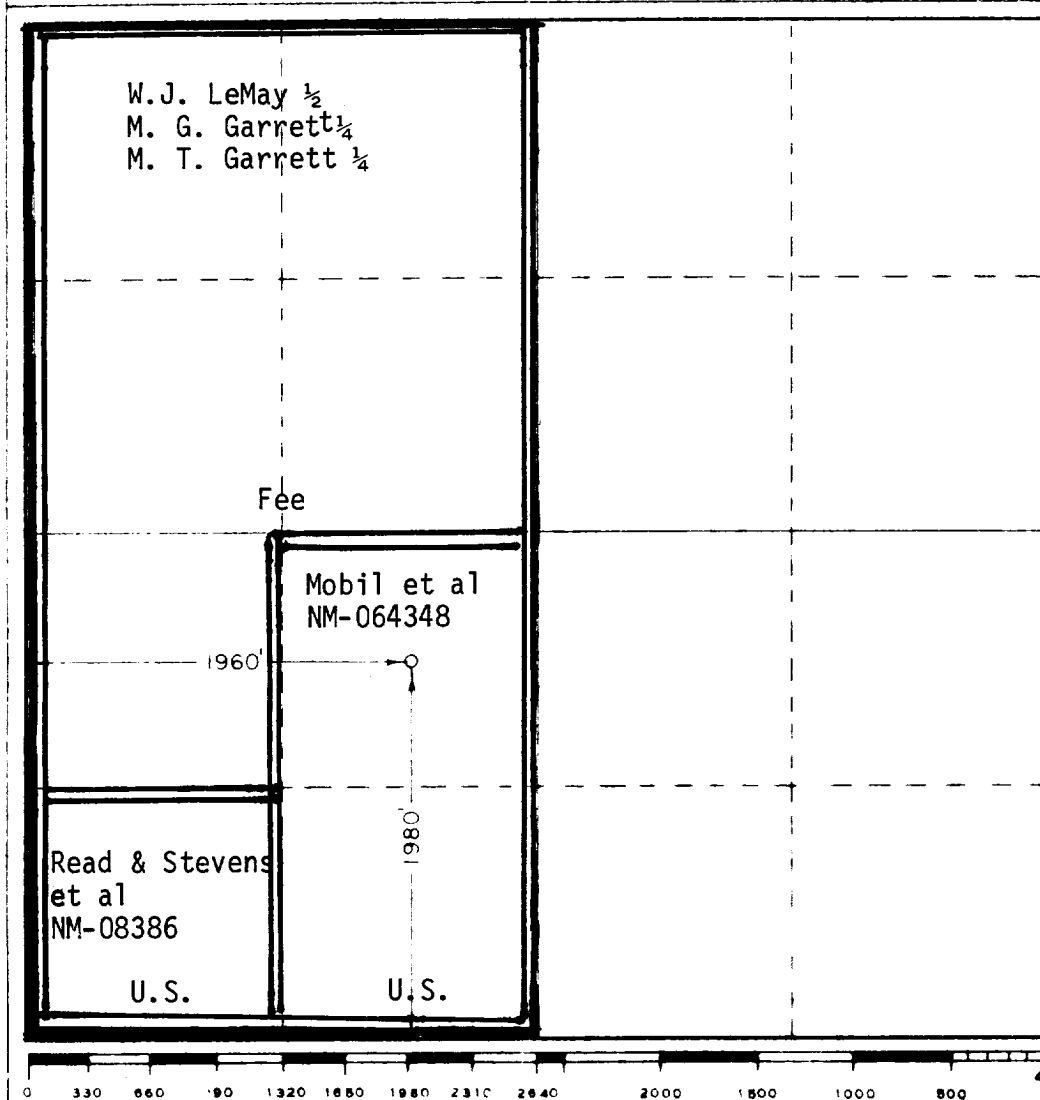
Operator UNIVERSAL RESOURCES CORP. Harvard Exploration & Development Corp.		Lease Mobil Federal Com		Well No. 1
Map Letter K	Section 7	Township 20 South	Range 25 East	County Eddy
Actual Location of Well: 1980 feet from the South line and 1960 feet from the West line				
Ground Level Elev. 3548.1	Producing Formation Morrow	Pool 71nd Cemetary Morrow	Dedicated Acreage: W/2-318.00 Acres	

1. Outline the acreage dedicated to the subject well by colored pencil or hachure marks on the plat below.
2. If more than one lease is dedicated to the well, outline each and identify the ownership thereof (both as to working interest and royalty).
3. If more than one lease of different ownership is dedicated to the well, have the interests of all owners been consolidated by communitization, unitization, force-pooling, etc?

☐ Yes ☒ No If answer is "yes," type of consolidation Proration unit will be communitized if productive.

If answer is "no," list the owners and tract descriptions which have actually been consolidated. (Use reverse side of this form if necessary.) _____

No allowable will be assigned to the well until all interests have been consolidated (by communitization, unitization, forced-pooling, or otherwise) or until a non-standard unit, eliminating such interests, has been approved by the Commission.



CERTIFICATION	
I hereby certify that the information contained herein is true and complete to the best of my knowledge and belief.	
<i>William J. LeMay</i>	
Name	William J. LeMay
Position	Agent
Company	UNIVERSAL RESOURCES Harvard Exploration & Development Corporation
Date	May 28, 1975
I hereby certify that the well location shown on this plat was plotted from field notes of actual surveys made by me or under my supervision, and that the same is true and correct to the best of my knowledge and belief.	
Date Survey	May 27, 1975
Registered Professional Engineer and Land Surveyor	<i>John W. West</i>
Certificate No.	676

