

NEW MEXICO OIL CONSERVATION COMMISSION
WELL LOCATION AND ACREAGE DEDICATION AT

Form C-102
 Supersedes C-128
 Effective 1-1-65

All distances must be from the outer boundaries of the Section.

Operator READ & STEVENS, INC.			Lease MOBIL FEDERAL COM		Well No. 1
Unit Letter K	Section 7	Township 20 SOUTH	Range 25 EAST	County EDDY	
Actual Footage Location of Well:					
1980 feet from the SOUTH line and		1960 feet from the WEST line			
Ground Level Elev. 3548.1	Producing Formation Morrow		Pool Cemetery Morrow	Dedicated Acreage: 318.00 Acres	

- Outline the acreage dedicated to the subject well by colored pencil or hachure marks on the plat below.
- If more than one lease is dedicated to the well, outline each and identify the owner of the lease (both as to working interest and royalty).
- If more than one lease of different ownership is dedicated to the well, have the interests of all owners been consolidated by communitization, unitization, force-pooling, etc?

☐ Yes ☒ No If answer is "yes," type of consolidation Proration unitization be communitized if productive.

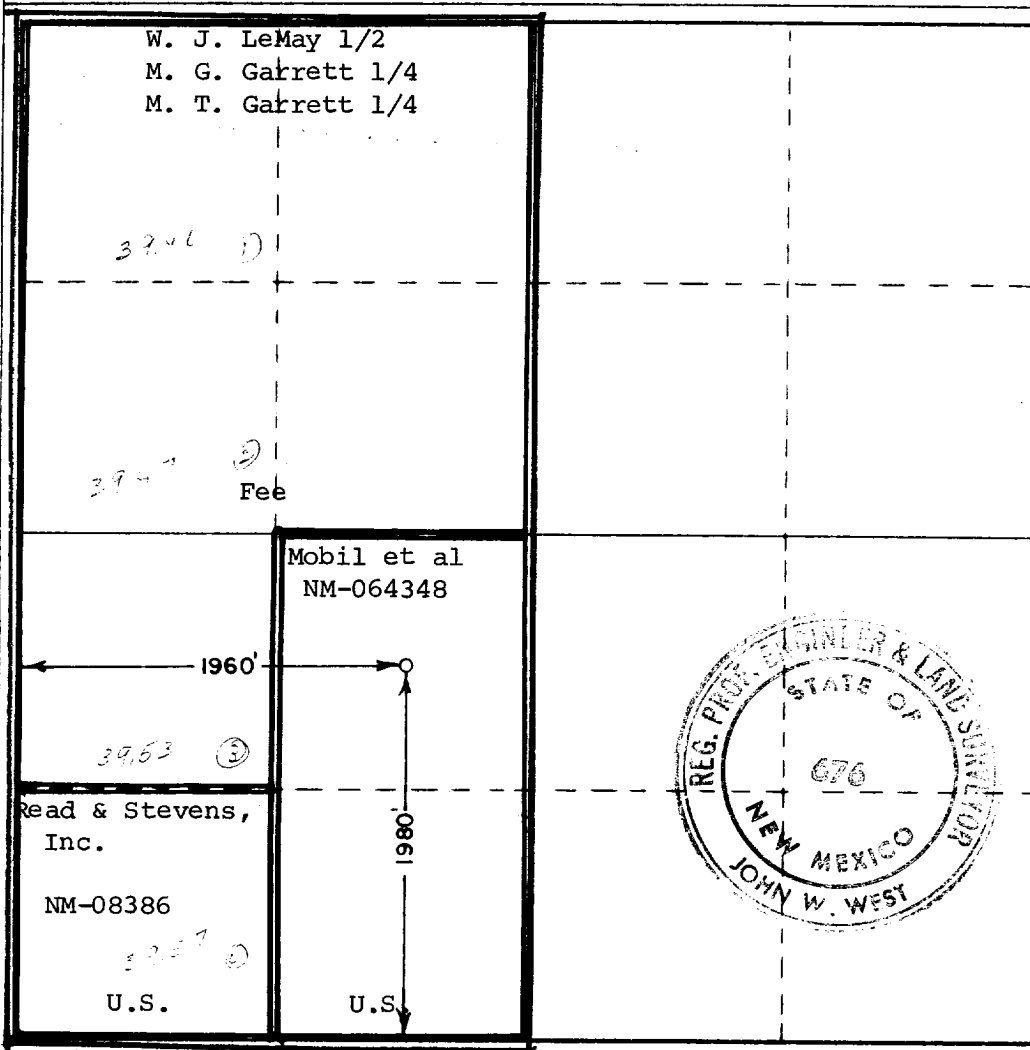
If answer is "no," list the owners and tract descriptions which have actually been consolidated. (Use reverse side of this form if necessary.) _____

No allowable will be assigned to the well until all interests have been consolidated (by communitization, unitization, forced-pooling, or otherwise) or until a non-standard unit, eliminating such interests, has been approved by the Commission.

RECEIVED

APR 14 1977

U.S. GEOLOGICAL SURVEY
ARTESIA, NEW MEXICO



CERTIFICATION

I hereby certify that the information contained herein is true and complete to the best of my knowledge and belief.

John L. Anderson Jr.
 Name

John L. Anderson, Jr.

Position
Agent

Company
Read & Stevens, Inc.

Date
April 12, 1977

I hereby certify that the well location shown on this plat was plotted from field notes of actual surveys made by me or under my supervision, and that the same is true and correct to the best of my knowledge and belief.

Date Surveyed
MAY 22, 1975

Registered Professional Engineer and/or Land Surveyor

John W. West
 Certificate No. **676**