

NE MEXICO OIL CONSERVATION COMMISSION
WELL LOCATION AND ACREAGE DEDICATION PLAT

Form C-102
Supersedes C-128
Effective 1-1-65

All distances must be from the outer boundaries of the Section.

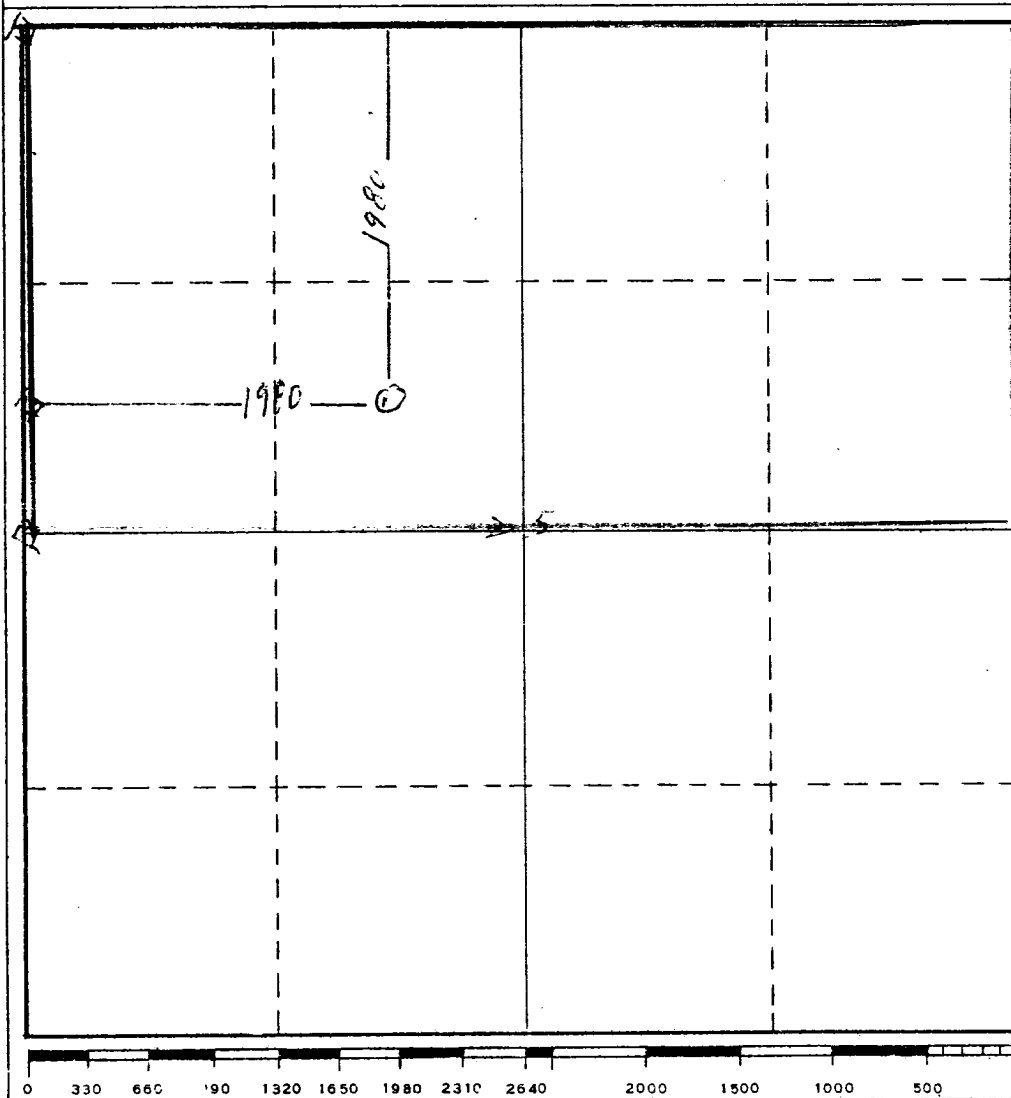
Operator R. C. Bennett & J. C. Ryan		Lease Union State		Well No. 2
Unit Letter 15	Section 25	Township 19 S	Range 20 E	County Boyd
Actual Footage Location of Well: 1900 feet from the west line and 1900 feet from the north line				
Ground Level Elev. 3345	Producing Formation Morrow	Pool Wildcat	Dedicated Acreage: 320 Acres	

1. Outline the acreage dedicated to the subject well by colored pencil or hachure marks on the plat below.
2. If more than one lease is dedicated to the well, outline each and identify the ownership thereof (both as to working interest and royalty).
3. If more than one lease of different ownership is dedicated to the well, have the interests of all owners been consolidated by communitization, unitization, force-pooling, etc?

☐ Yes ☐ No If answer is "yes," type of consolidation _____

If answer is "no," list the owners and tract descriptions which have actually been consolidated. (Use reverse side of this form if necessary.) _____

No allowable will be assigned to the well until all interests have been consolidated (by communitization, unitization, forced-pooling, or otherwise) or until a non-standard unit, eliminating such interests, has been approved by the Commission.



CERTIFICATION

I hereby certify that the information contained herein is true and complete to the best of my knowledge and belief.

R. C. Bennett

Name **R. C. Bennett**

Position **Partner**

Company **R. C. Bennett & J. C. Ryan**

Date **November 14, 1975**

I hereby certify that the well location shown on this plat was plotted from field notes of actual surveys made by me or under my supervision, and that the same is true and correct to the best of my knowledge and belief.

Nov. 14, 1975

Date Surveyed **Nov. 14, 1975**
Registered Professional Engineer
and/or Land Surveyor

Nov. 14, 1975

Certificate No.