

N. M. O. C. C.

SUBMIT IN 'PLICATE

Other instructions on
reverse side)Copy 65F
Form approved.
Budget Bureau No. 42-11425.UNITED STATES
DEPARTMENT OF THE INTERIOR
GEOLOGICAL SURVEY

30-015-21698

APPLICATION FOR PERMIT TO DRILL, DEEPEN, OR PLUG BACK

1a. TYPE OF WORK

DRILL ☒DEEPEN ☐PLUG BACK ☐

b. TYPE OF WELL

OIL
WELL ☐GAS
WELL ☒

OTHER

SINGLE
ZONE ☒MULTIPLE
ZONE ☐

2. NAME OF OPERATOR

Yates Petroleum Corporation ✓

3. ADDRESS OF OPERATOR

207 South 4th Street - Artesia, NM 88210

4. LOCATION OF WELL (Report location clearly and in accordance with any State requirements.)

At surface

660' FSL & 1980' FEL of Sec. 19-20S-25E

At proposed prod. zone

14. DISTANCE IN MILES AND DIRECTION FROM NEAREST TOWN OR POST OFFICE*

8 miles West Southwest from Seven Rivers, NM Eddy

15. DISTANCE FROM PROPOSED*

LOCATION TO NEAREST
PROPERTY OR LEASE LINE, FT.
(Also to nearest drlg. unit line, if any)

16. NO. OF ACRES IN LEASE

17. NO. OF ACRES ASSIGNED
TO THIS WELL

320

18. DISTANCE FROM PROPOSED LOCATION*
TO NEAREST WELL, DRILLING, COMPLETED,
OR APPLIED FOR, ON THIS LEASE, FT.

19. PROPOSED DEPTH

9600

20. ROTARY OR CABLE TOOLS

Rotary

21. ELEVATIONS (Show whether DF, RT, GR, etc.)

3541' GR

22. APPROX. DATE WORK WILL START*

Nov. 17, 1975

23.

PROPOSED CASING AND CEMENTING PROGRAM

SIZE OF HOLE	SIZE OF CASING	WEIGHT PER FOOT	SETTING DEPTH	QUANTITY OF CEMENT
17½"	13-3/8"	48#	250'	Circulate
12½ or 11"	8-5/8"	24 & 32#	3250'	Circulate
7-7/8"	5½ or 5½"	15.5-17# or 10.5-11.6#	9600'	250 sacks (approx.)

Propose to drill and test the Morrow & intermediate horizons. Approx. 250' of surface casing will be set and cemented to the surface, and Approx. 3250' of intermediate casing will be set and cemented thru the Glorietta Sand. If commercial pay is encountered either 5½" or 4½" casing will be run, and well will be perforated and treated as needed for production.

Mud Program: - Gel & LCM to 3250', water to 7300', Flosal-Drispak mud to total depth.

BOP Program: - BOP's & hydril will be installed on 8" casing and tested, pipe rams & hydril daily, and rams on trips.

IN ABOVE SPACE DESCRIBE PROPOSED PROGRAM: If proposal is to deepen or plug back, give data on present production zone and proposed new productive zone. If proposal is to drill or deepen directionally, give pertinent data on subsurface locations and measured and true vertical depths. Give blowout preventer program, if any.

24.

SIGNED

Eddie M. Halyard

TITLE

Engineer

DATE 11-6-75

(This space for Federal or State office use)

SUBJECT TO ATTACHED DEEP WELL CONTROL

REQUIREMENTS DATED JUN 22 1973

TITLE

DECLARED WATER BASIN

DATE

O. C. C.

ARTESIA, OFFICE

THIS APPROVAL IS VALID IF OPERATIONS
ARE NOT COMMENCED WITHIN 3 MONTHS.
EXPIRES MAR 8 1976

*See Instructions On Reverse Side

CASING MUST BE CIRCULATED

RECEIVED
NOV 6 1975U. S. GEOLOGICAL SURVEY
ARTESIA, NEW MEXICO

RECEIVED

DEC 9 1975

NOTIFY US IN SUFFICIENT TIME TO
WITNESS CEMENTING THE CASING.

NEW MEXICO OIL CONSERVATION COMMISSION
WELL LOCATION AND ACREAGE DEDICATION PLAT

Form C-102
Supersedes C-128
Effective 1-1-65

All distances must be from the outer boundaries of the Section.

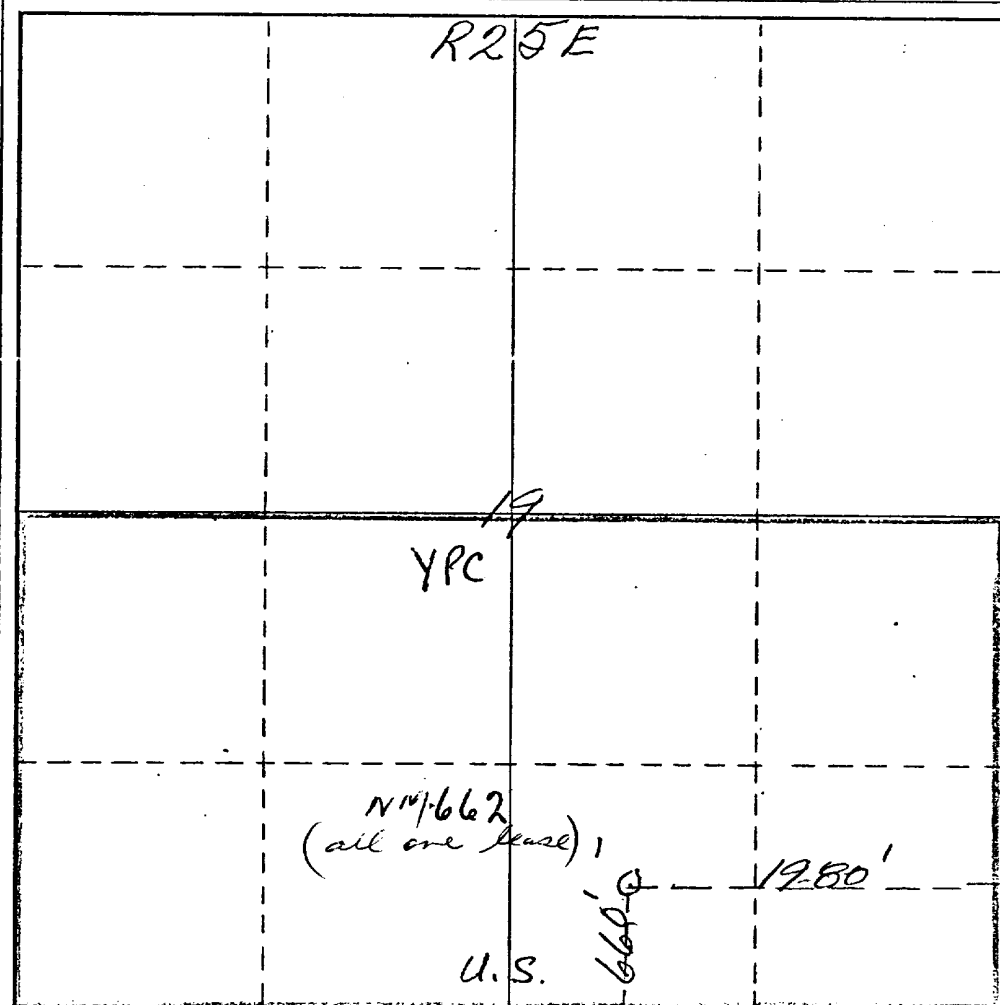
Operator <i>Yates Petroleum Corp.</i>			Lease <i>Federal "FC"</i>			Well No. <i>1</i>
Unit Letter <i>0</i>	Section <i>19</i>	Township <i>20 South</i>	Range <i>25 East</i>	County <i>Eddy</i>		
Actual Footage Location of Well: <i>660</i> feet from the <i>South</i> line and <i>1980</i> feet from the <i>East</i> line						
Ground Level Elev. <i>3541</i>	Producing Formation <i>Morrow</i>		Pool <i>The Cemetery</i>	Dedicated Acreage: <i>320</i> Acres		

1. Outline the acreage dedicated to the subject well by colored pencil or hachure marks on the plat below.
2. If more than one lease is dedicated to the well, outline each and identify the ownership thereof (both as to working interest and royalty).
3. If more than one lease of different ownership is dedicated to the well, have the interests of all owners been consolidated by communitization, unitization, force-pooling, etc?

☐ Yes ☐ No If answer is "yes," type of consolidation _____

If answer is "no," list the owners and tract descriptions which have actually been consolidated. (Use reverse side of this form if necessary.) _____

No allowable will be assigned to the well until all interests have been consolidated (by communitization, unitization, forced-pooling, or otherwise) or until a non-standard unit, eliminating such interests, has been approved by the Commission.



CERTIFICATION

I hereby certify that the information contained herein is true and complete to the best of my knowledge and belief.

Eddie M. Mahfood

Name *Eddie M. Mahfood*

Engineer

Position

Company

Yates Pet. Corporation

Date

11-6-75

I hereby certify that the location shown on this plat was taken from field notes of actual surveys made by me or under my supervision and that the same is true and correct to the best of my knowledge and belief.

Date Surveyed

November 5th 1975

Registered Professional Engineer and/or Land Surveyor

James H. Brown

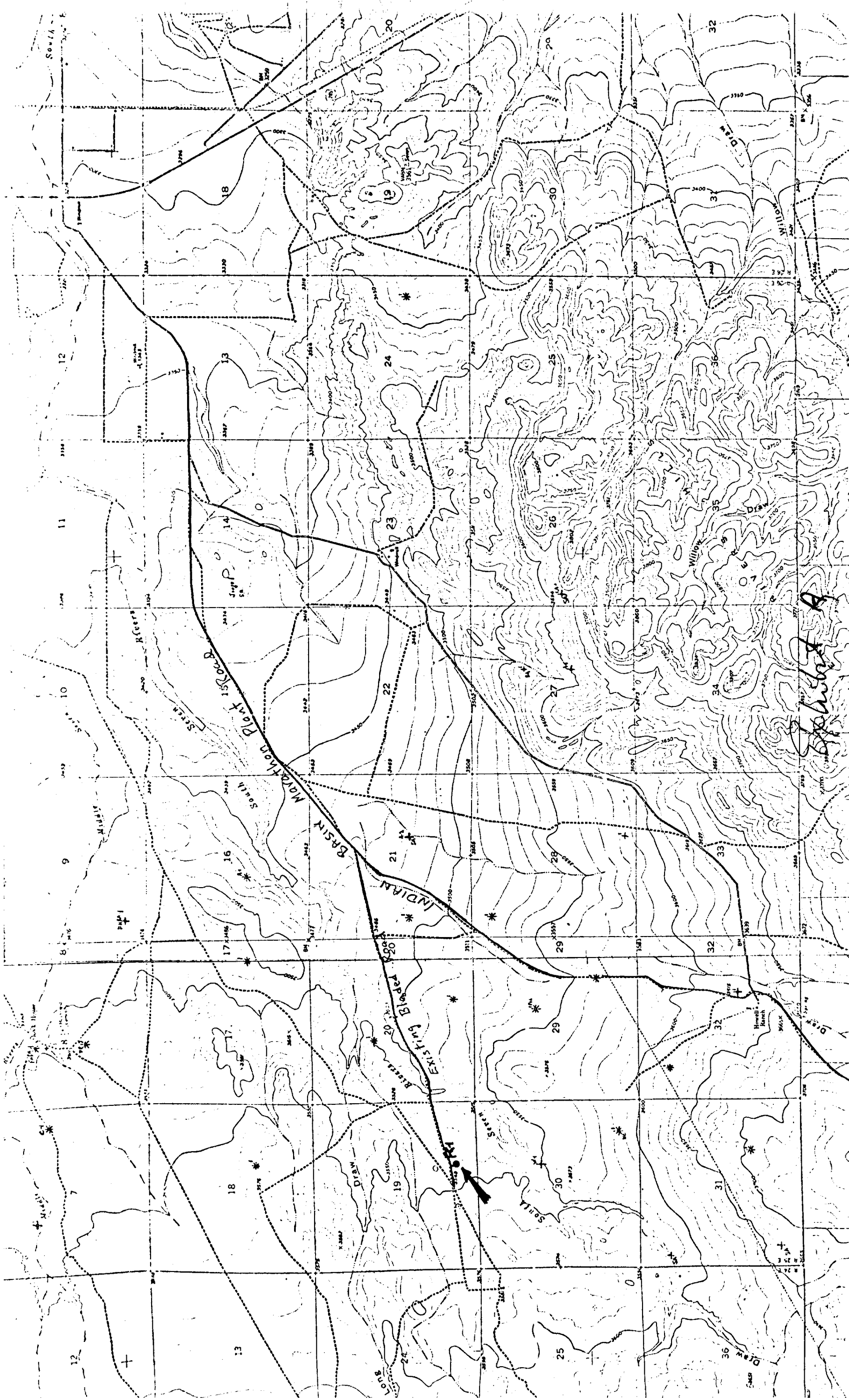
Certificate No.

542

Development plan to accompany "Applications to Drill, Federal Lease".
12-Point Plan.

1. EXISTING ROADS: See Plat (Exhibit A) Bladed and maintained road west off of the Indian Basin Marathon Plant road.
2. PLANNED ACCESS ROADS: See Plat (Exhibit A) Location is short distance from existing road, a minimum of new road bladed and maintained
3. LOCATION OF WELLS: See Plat (Exhibit A) Development well to offset producers in adjacent section
4. LATERAL ROADS TO LOCATION: See Plat (Exhibit A)
5. LOCATION OF TANK BATTERY & FLOWLINES: See Plat (Exhibit C) Battery to be located in SW corner of pad.
6. LOCATION & TYPES OF WATER SUPPLY: See Plat (Exhibit A)
To be trucked
7. METHODS FOR HANDLING WASTE DISPOSAL: See Sketch (Exhibit C)
Trash & Engine Oil in burn pit, mud in reserve pit.
8. LOCATION OF CAMPS: Not Applicable.
9. LOCATION OF AIRSTRIPS: Not Applicable.
10. LOCATION LAYOUT (rig, tanks, pits, racks, etc): See Sketch (Exhibit C)
11. PLANS FOR RESTORATION OF SURFACE: Pits to be fenced until dry then leveled. Location to be cleaned and restored as near to original as possible or to the satisfaction of BLM and grazee.
12. OTHER ENVIRONMENT INFORMATION: Rolling terrian with sparse prairie grass tumbleweed, yellow tops, cactus and greasewood.

Yates Petroleum Corporation
Federal "FC" No. 1
660' FSL & 1980' FEL of Sec. 19-20-25
Eddy County, New Mexico



YPC- Federal "FC" No. 1
666/S 1980/E Sec 19-20s-25E

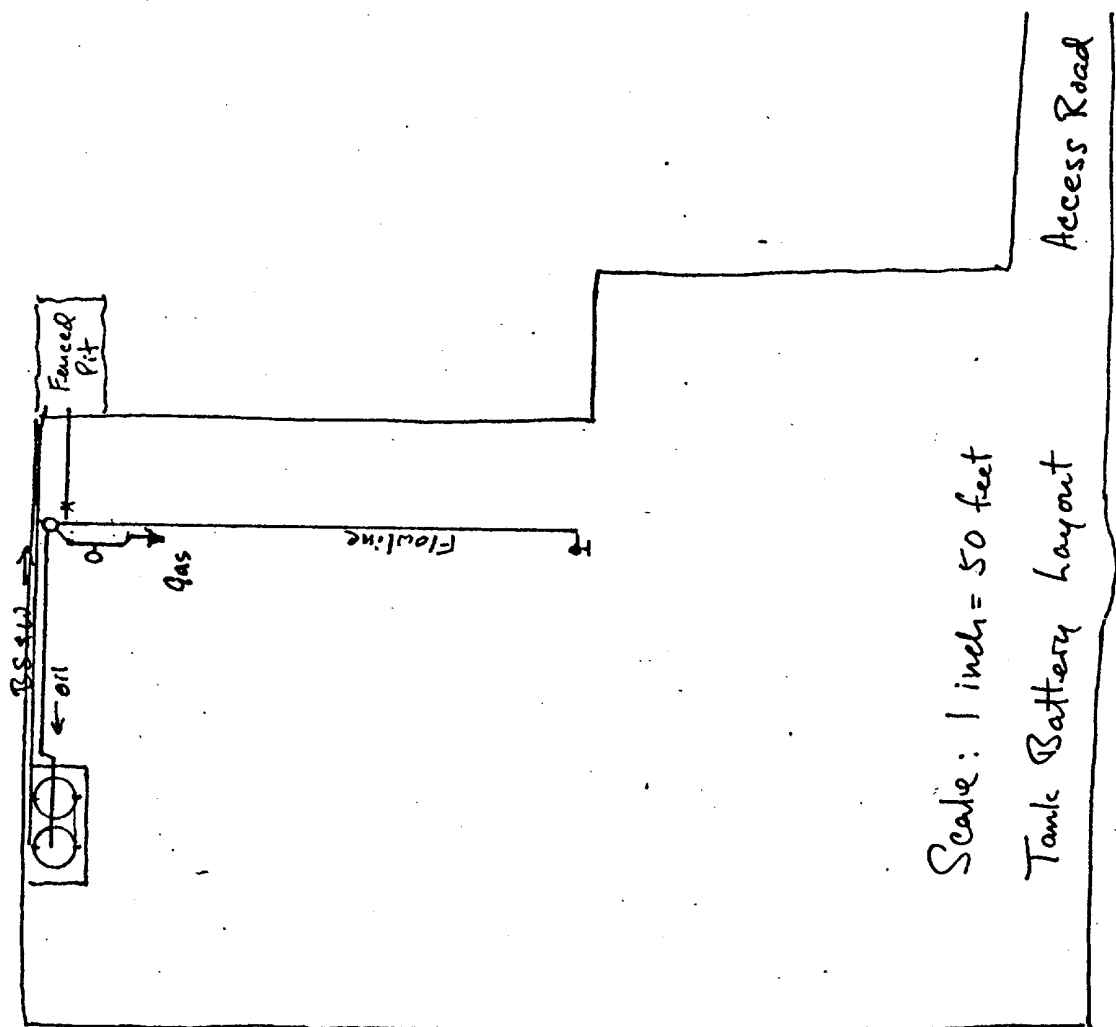
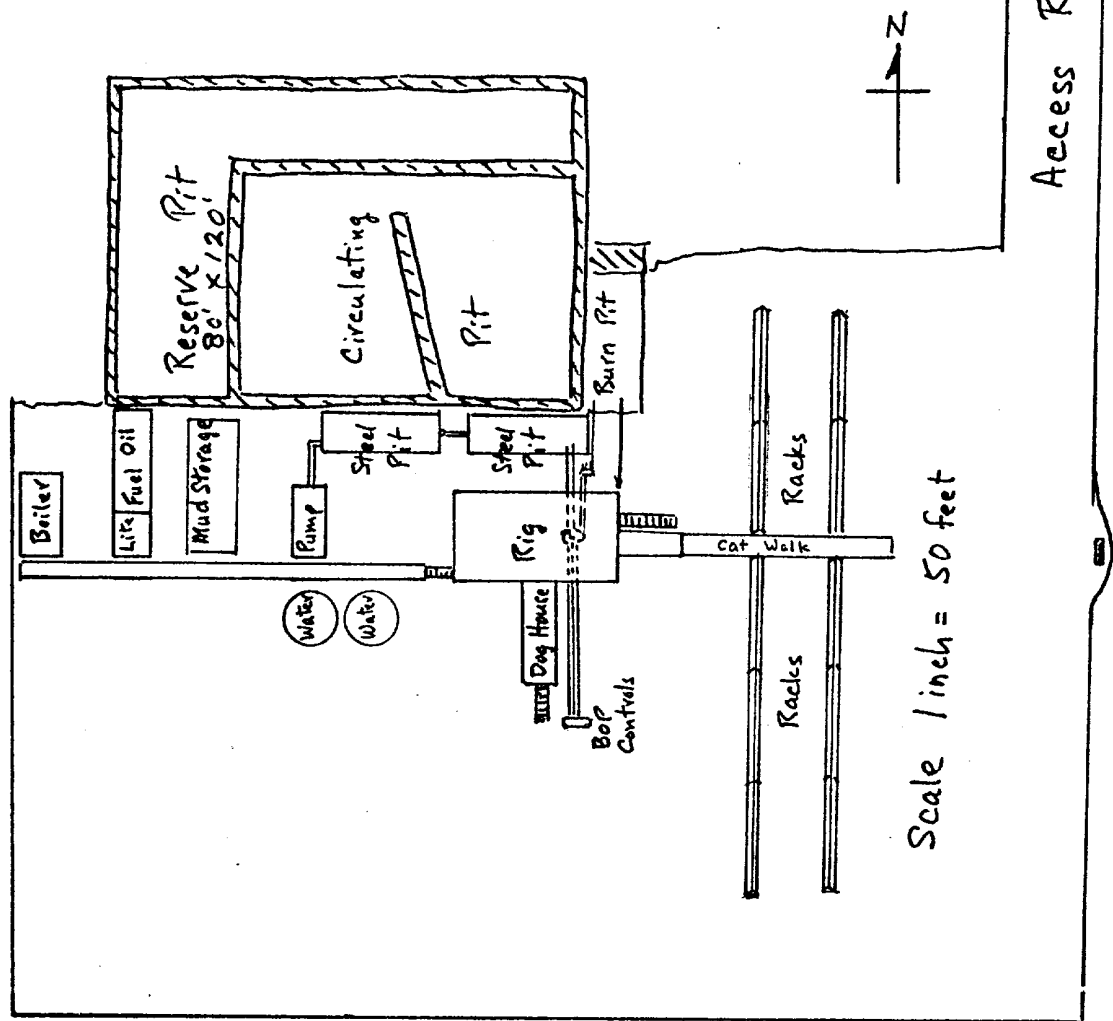
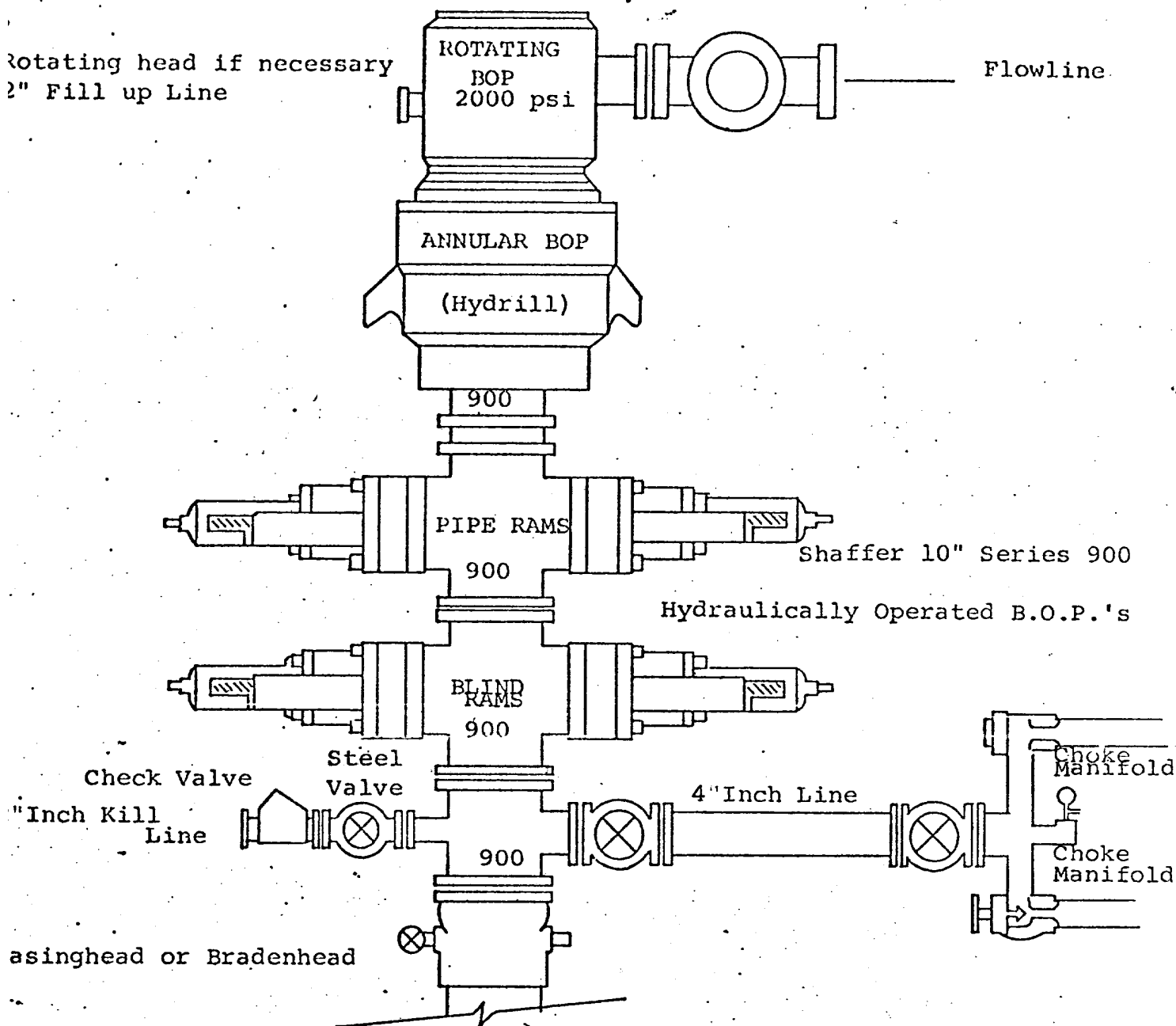


Exhibit C



THE FOLLOWING CONSTITUTE MINIMUM BLOWOUT PREVENTER REQUIREMENTS

- All preventers to be hydraulically operated with secondary manual controls installed prior to drilling out from under casing.
- Choke outlet to be a minimum of 4" diameter.
- Kill line to be of all steel construction of 2" minimum diameter.
- All connections from operating manifolds to preventers to be all steel. hole or tube a minimum of one inch in diameter.
- The available closing pressure shall be at least 15% in excess of that required with sufficient volume to operate the B.O.P.'s.
- All connections to and from preventer to have a pressure rating equivalent to that of the B.O.P.'s.
- Inside blowout preventer to be available on rig floor.
- Operating controls located a safe distance from the rig floor.
- Hole must be kept filled on trips below intermediate casing. Operator not responsible for blowouts resulting from not keeping hole full.
- O. D. P. float must be installed and used below zone of first gas intrusion.

Yates Petroleum Corporation

Federal "FC" No. 1

660' FSL & 1980' FEL of Section 19-20-25

Eddy County, New Mexico