

NEW MEXICO OIL CONSERVATION COMMISSION
 WELL LOCATION AND ACREAGE DEDICATION PLAT

Form C-102
 Supersedes C-128
 Effective 1-1-65

All distances must be from the outer boundaries of the Section.

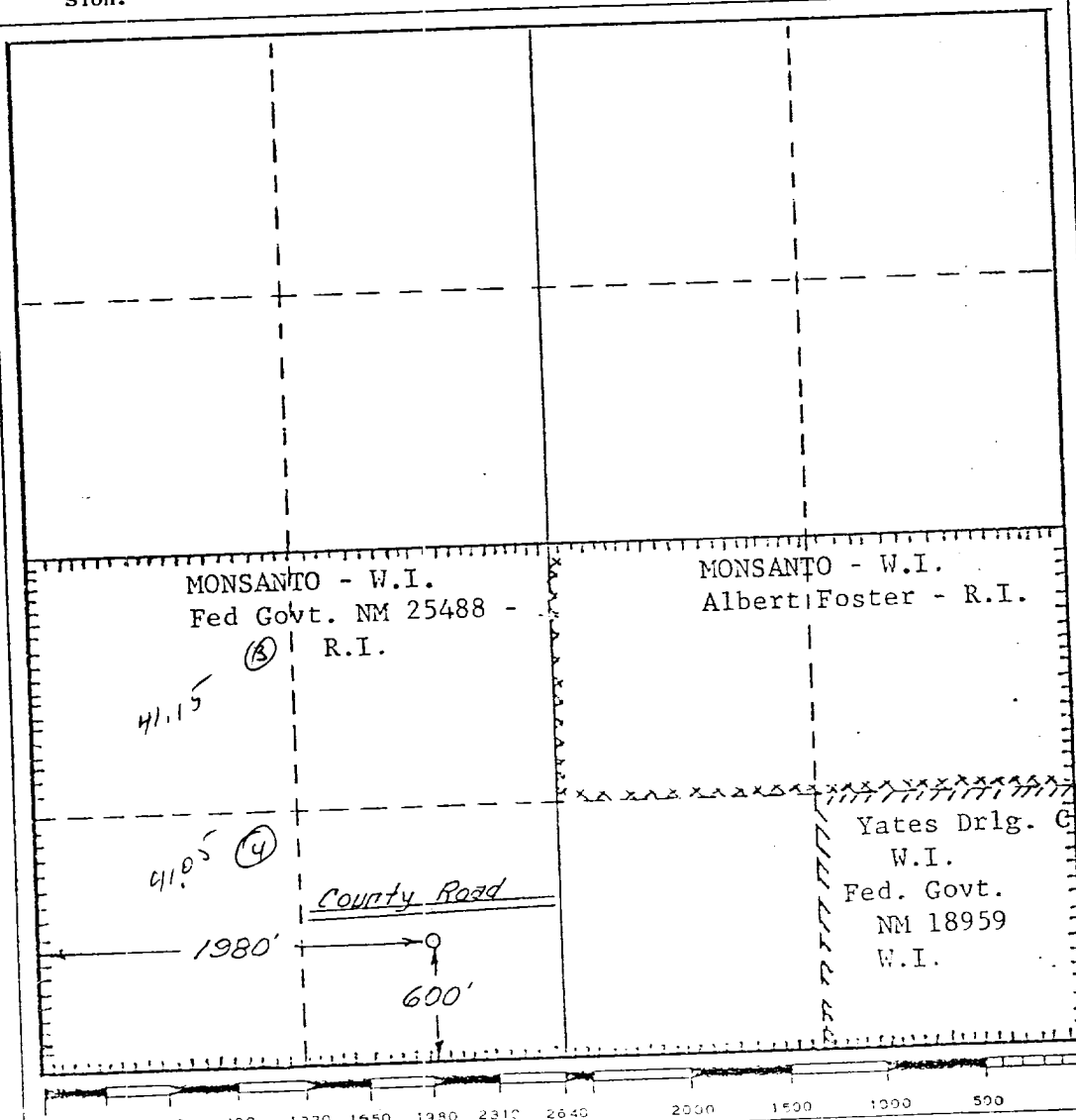
Operator MONSANTO COMPANY			Lease FOSTER FEDERAL		Well No. 1
Unit Letter	Section 31	Township 19S	Range 25E	County Eddy	
Actual Footage Location of Well: 1980 feet from the West line and 600 feet from the South line					
Ground Level Elev. 3561	Producing Formation Morrison		Pool Undesignated		Dedicated Acreage: 220.522, 10 Acres 160

- Outline the acreage dedicated to the subject well by colored pencil or hachure marks on the plat below.
- If more than one lease is dedicated to the well, outline each and identify the ownership thereof (both as to working interest and royalty).
- If more than one lease of different ownership is dedicated to the well, have the interests of all owners been consolidated by communitization, unitization, force-pooling, etc?

☒ Yes ☐ No If answer is "yes," type of consolidation Communitization

If answer is "no," list the owners and tract descriptions which have actually been consolidated. (Use reverse side of this form if necessary.)

No allowable will be assigned to the well until all interests have been consolidated (by communitization, unitization, forced-pooling, or otherwise) or until a non-standard unit, eliminating such interests, has been approved by the Commission.



CERTIFICATION

I hereby certify that the information contained herein is true and complete to the best of my knowledge and belief.

E. M. Scholl

Name
E. M. Scholl
 Position
Regional Production Mgr.
 Company
MONSANTO COMPANY

Date
June 10, 1976

I hereby certify that the well location shown on this plat was plotted from field notes of actual surveys made by me or under my supervision, and that the same is true and correct to the best of my knowledge and belief.

May 24, 1976
 Date Surveyed
Richard B. Duniven
 Registered Professional Engineer
 and/or Land Surveyor

Richard B. Duniven
 Certificate No.

4862