

NEW MEXICO OIL CONSERVATION COMMISSION  
WELL LOCATION AND ACREAGE DEDICATION PLAT

Form C-102  
Supersedes C-128  
Effective 1-1-65

All distances must be from the outer boundaries of the Section

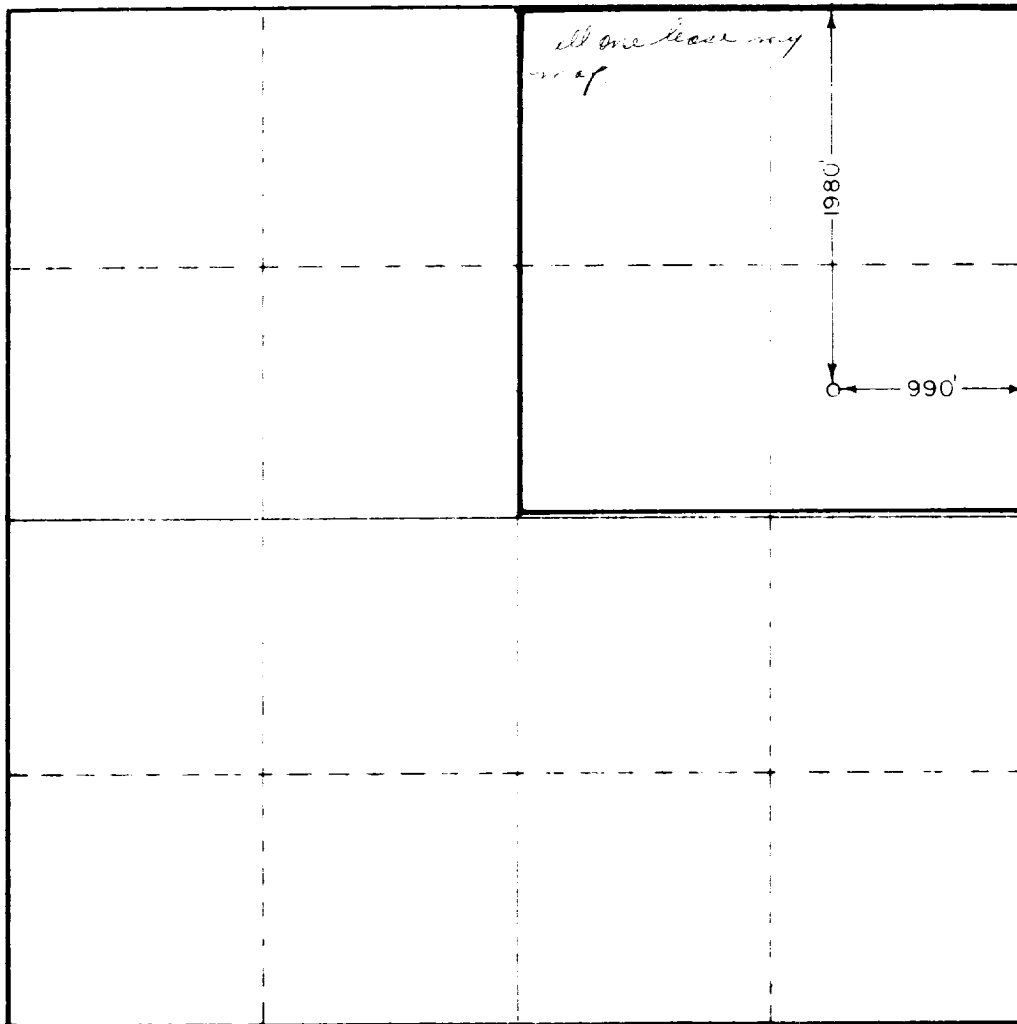
Operator <b>Roger C. Hanks</b>		Lease <b>Julie Com</b>		Well No. <b>1</b>	
Unit Letter <b>H</b>	Section <b>17</b>	Township <b>19 South</b>	Range <b>25 East</b>	County <b>Eddy</b>	
Actual Forage Location of Well:					
<b>1980</b> feet from the <b>North</b> line and		<b>990</b> feet from the <b>East</b> line			
Ground Level Elev. <b>3522.8</b>	Producing Formation <b>Cisco Canyon</b>	Rock <b>North Dagger Draw- Upper Penn</b>	Dedicated Acreage: <b>160</b> Acres		

- Outline the acreage dedicated to the subject well by colored pencil or hatchure marks on the plat below.
- If more than one lease is dedicated to the well, outline each and identify the ownership thereof (both as to working interest and royalty)
- If more than one lease of different ownership is dedicated to the well, have the interests of all owners been consolidated by communitization, unitization, force-pooling, etc?

☒ Yes ☐ No If answer is "yes," type of consolidation Communitization

If answer is "no," list the owners and tract descriptions which have actually been consolidated. (Use reverse side of this form if necessary.)

No allowable will be assigned to the well until all interests have been consolidated (by communitization, unitization, forced-pooling, or otherwise) or until a non-standard unit, eliminating such interests, has been approved by the Commission.



CERTIFICATION

I hereby certify that the information contained herein is true and complete to the best of my knowledge and belief.

Name Roger C. Hanks  
Position Owner-Operator  
Company Roger C. Hanks  
Date April 9, 1976

I hereby certify that the well location shown on this plat was plotted from field notes of actual surveys made by me or under my supervision, and that the same is true and correct to the best of my knowledge and belief.

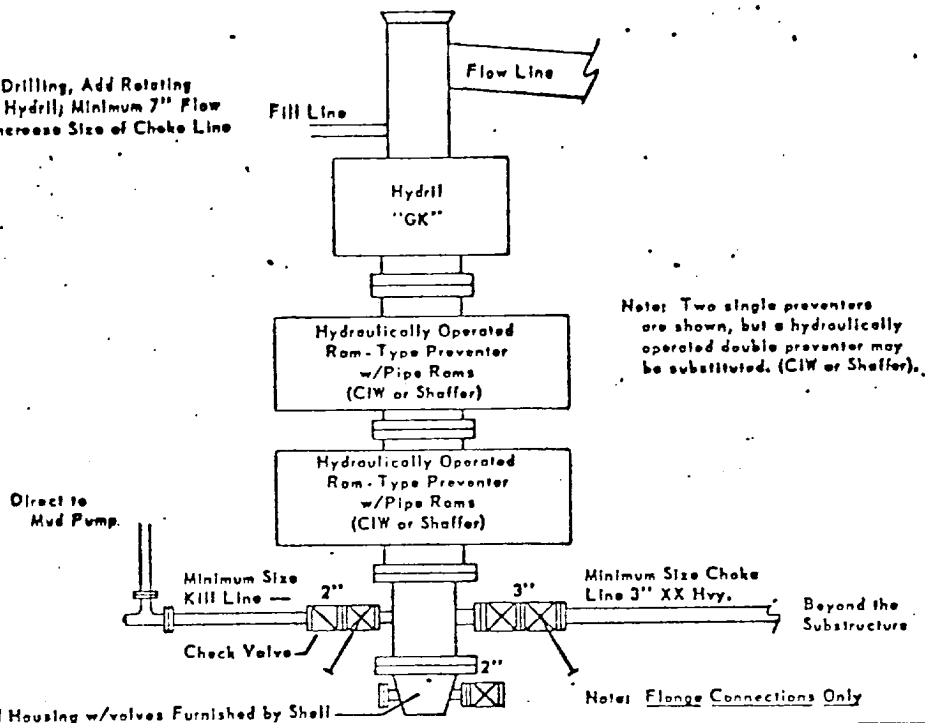
Date Surveyed January 10, 1976  
Registered Professional Engineer and Land Surveyor  
Certificate No. 676  
State of NEW MEXICO  
Surveyor JOHN W. WEST



# MINIMUM BLOWOUT PREVENTER EQUIPMENT FOR HAZARDOUS INTERMEDIATE PRESSURE SERVICE

Class II (3000 psi WP - Series 900)

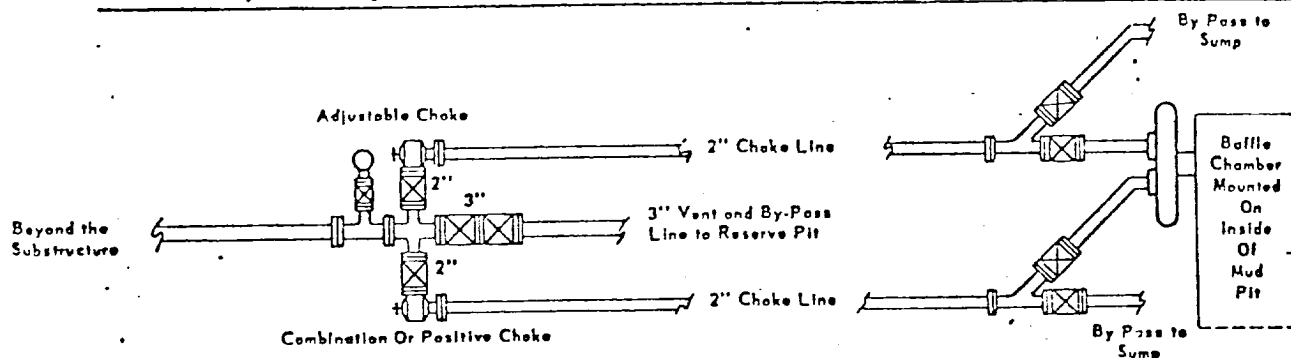
Note: For Air Drilling, Add Rotating Head above Hydril; Minimum 7" Flow Line, and Increase Size of Choke Line to 4".



Note: Two single preventers are shown, but a hydraulically operated double preventer may be substituted. (CIW or Shaffer).

Casing Head Housing w/valves Furnished by Shell

Note: Flange Connections Only



## MINIMUM REQUIREMENTS

1. All BOP's, valves, fittings and lines shall have 3000 psi WP (Series 900) ratings.
2. All equipment from the top preventer to the outermost valve or choke shall be pressure tested to 3000 psi.
3. All valves employed must be gate type suitable for high pressure mud service.
4. Outside valves on spool that are 4" or larger shall be hydraulically operated.
5. The Cameron steel ring and a rubber "O" ring shall be required on all BOP Flange connections.
6. Replacement parts for chokes shall be available at rig.
7. All lines shall be securely anchored.
8. Casing wear ring shall be required when the BOP is larger than the nominal casing size.
9. An 80 gallon hydraulic accumulator with an operating pressure of 1500 psi shall be required.
10. Two control points (a master control manifold and a remote control manifold including Hydril regulator valves,) shall be properly equipped and connected to BOP's with steel lines.
11. Inside BOP and kelly cock shall be provided.
12. BOP's shall have extensions for locking rams.
13. Outside valve on choke line and inside valve on kill line shall have extensions for operating valves.
14. Valve on casing head housing shall be used only in an extreme emergency.
15. Choke and vent line shall be streamlined with no abrupt turns or bends.