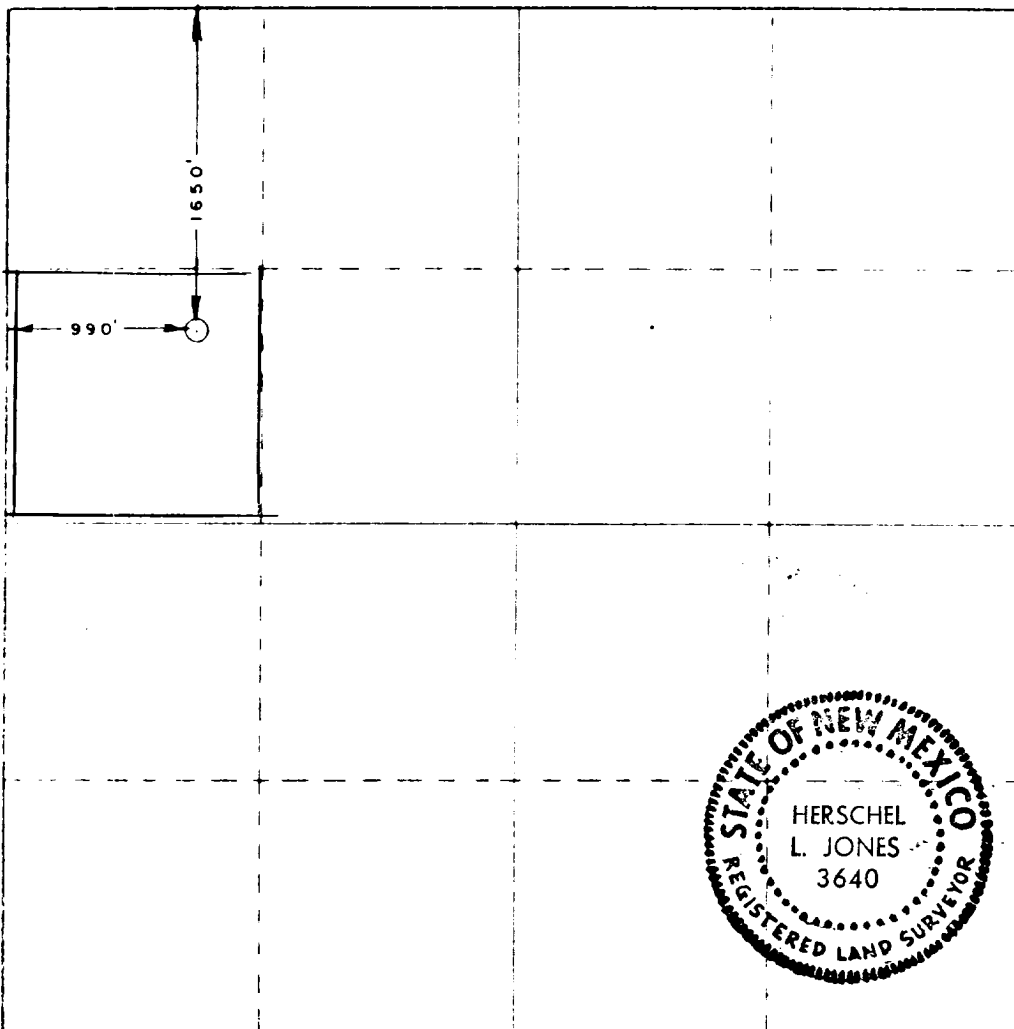


Form C-102
Supersedes C-128
Effective 1-1-65

SHEPHERD		SHENANDOAH OIL CORPORATION		Kenwood Federal		5	
Section	Township	Range					
"E"	29	18 South	31 East	Eddy			
True Magnetic Location of Well:							
1650	feet from the	North	line and	990	feet from the	West	line
Surface Level Elev.	Producing Formation				Depth to Base Line,		
3627	Penrose + Grayburg		Shugart		40		

- RECEIVED**
FEB 6 1978
U.S. GEOLOGICAL SURVEY
ARTESIA, NEW MEXICO

No allowable will be assigned to the well until all interests have been consolidated (by communitization, unitization, forced-pooling, or otherwise) or until a non-standard unit, eliminating such interests, has been approved by the Commission.



I hereby certify that the information contained herein is true and complete to the best of my knowledge and belief.

I hereby certify that the well location shown on this plat was plotted from field notes of actual surveys made by me or under my supervision, and that the same is true and correct to the best of my knowledge and belief.

January 28, 1978

Registered Professional Engineer
in State of Maryland

RECEIVED AND DELIVERED TO
Louise Jones
3640