

NEW MEXICO OIL CONSERVATION COMMISSION
WELL LOCATION AND ACREAGE DEDICATION PLAT

Form C-102
Supersedes C-128
Effective 1-1-65

All distances must be from the outer boundaries of the Section.

Operator Amoco Production Co.			Lease Pre-Buying Greenwood Unit		Well No. 11
Tract Letter L	Section 34	Township 18 South	Range 31 East	County Eddy	
Actual Footage Location of Well: 1980 feet from the South line and 660 feet from the West line					
Ground Level Elev. 3613.5	Producing Formation Penn		Pool Shugart Penn		Dedicated Acreage: 320 Acres

1. Outline the acreage dedicated to the subject well by colored pencil or hatchure marks on the plat below.
2. If more than one lease is dedicated to the well, outline each and identify the ownership thereof (both as to working interest and royalty).
3. If more than one lease of different ownership is dedicated to the well, have the interests of all owners been consolidated by communitization, unitization, force-pooling, etc?

RECEIVED

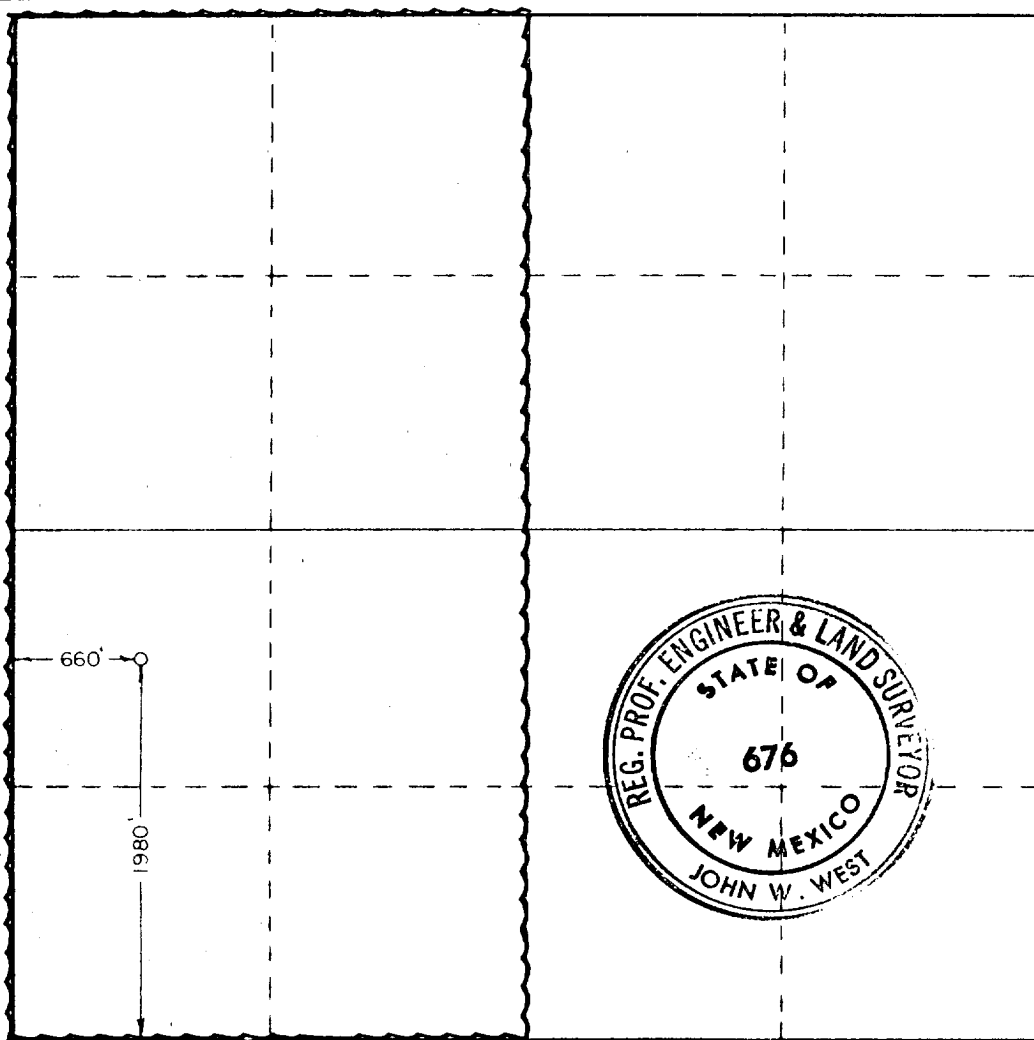
AUG 22 1979

**D. C. C.
ARTESIA, OFFICE**

☒ Yes ☐ No If answer is "yes," type of consolidation Unitization

If answer is "no," list the owners and tract descriptions which have actually been consolidated. (Use reverse side of this form if necessary.) _____

No allowable will be assigned to the well until all interests have been consolidated (by communitization, unitization, forced-pooling, or otherwise) or until a non-standard unit, eliminating such interests, has been approved by the Commission.



CERTIFICATION

I hereby certify that the information contained herein is true and complete to the best of my knowledge and belief.

Name: Ray Cox
 Position: Administrative Supervisor
 Company: Amoco Production Company
 Date: August 22, 1979

I hereby certify that the well location shown on this plat was plotted from field notes of actual surveys made by me or under my supervision, and that the same is true and correct to the best of my knowledge and belief.

Date Surveyed: 4/14/78

Registered Professional Engineer and/or Land Surveyor

John W. West

Certificate No. John W. West 676
Ronald J. Eidson 3239

0 340 660 980 1300 1620 1940 2260 2580 2900 3220 3540 0