

MOCC COPY

SUBMIT IN TRIPLICATE\*

(Other instructions on  
reverse side.)Form approved.  
Budget Bureau No. 42-R1425.UNITED STATES  
DEPARTMENT OF THE INTERIOR  
GEOLOGICAL SURVEY

## APPLICATION FOR PERMIT TO DRILL, DEEPEN, OR PLUG BACK

## 1a. TYPE OF WORK

DRILL ☒DEEPEN ☐PLUG BACK ☐

## b. TYPE OF WELL

OIL WELL ☐GAS WELL ☒OTHER ☐SINGLE ZONE ☒MULTIPLE ZONE ☐

## 2. NAME OF OPERATOR

Carl A. Schellinger ✓

## 3. ADDRESS OF OPERATOR

P. O. Box 447, Roswell, NM 88201

## 4. LOCATION OF WELL (Report location clearly and in accordance with any State requirements.)

At surface 1980' FNL &amp; 660' FEL

At proposed prod. zone 1980' FNL &amp; 660' FEL

## 14. DISTANCE IN MILES AND DIRECTION FROM NEAREST TOWN OR POST OFFICE\*

12 miles north of Carlsbad, NM

## 10. DISTANCE FROM PROPOSED\*

LOCATION TO NEAREST  
PROPERTY OR LEASE LINE, FT.  
(Also to nearest drlg. unit line, if any) 660'

## 16. NO. OF ACRES IN LEASE

2123.19

## 17. NO. OF ACRES ASSIGNED

TO THIS WELL 320

18. DISTANCE FROM PROPOSED LOCATION\*  
TO NEAREST WELL, DRILLING, COMPLETED,  
OR APPLIED FOR, ON THIS LEASE, FT.

## 19. PROPOSED DEPTH

11,000

## 20. ROTARY OR CABLE TOOLS

Rotary

## 21. ELEVATIONS (Show whether DF, RT, GR, etc.)

3420 GR

## 22. APPROX. DATE WORK WILL START\*

July 14, 1978

## 23.

## PROPOSED CASING AND CEMENTING PROGRAM

SIZE OF HOLE	SIZE OF CASING	WEIGHT PER FOOT	SETTING DEPTH	QUANTITY OF CEMENT
17½"	13 3/8"	48#	400	350-Circulate
12¼"	8 5/8"	36#	3600	800
7 7/8"	4 1/2"	11.6 & 13.5#	11,000	700

1. Drill to 400', set and cement 13 3/8" casing; install blowout preventor.
2. Drill to approximately 3600', run open hole logs, set and cement 8 5/8" casing.
3. Drill to approximately 11,200, run open hole logs and possible one or more stem tests, set and cement 4½" casing to cover productive zones.

*Gas is not dedicated*

The Geologic surface formation is Gatuna; Estimated tops are: Yates 300', Queen 1200, San Andres 2070, Third Bone Springs 7720, Wolfcamp 8150, Cisco 8565, Canyon 8775, Strawn 9260, Atoka 9985, Morrow limestone 10417, Morrow Clastics 10485, Barnett 10850.

IN ABOVE SPACE DESCRIBE PROPOSED PROGRAM: If proposal is to deepen or plug back, give data on present productive zone and proposed new productive zone. If proposal is to drill or deepen directionally, give pertinent data on subsurface locations and measured and true vertical depths. Give blowout preventer program, if any.

## 24.

SIGNED

TITLE Operator

DATE 5-30-78

(This space for Federal or State office use)

PERMIT NO.

APPROVAL DATE

JUL 06 1978

APPROVED BY

TITLE

ACTING DISTRICT ENGINEER

DATE

JUL 06 1978

CONDITIONS OF APPROVAL, IF ANY:

THIS APPROVAL IS RESCINDED IF OPERATIONS  
ARE NOT COMMENCED WITHIN 3 MONTHS.  
OCT 06 1978  
EXPIRES

\*See Instructions On Reverse Side

## WELL LOCATION AND ACREAGE DEDICATION PLAT

Supersedes C-128  
Effective 1-1-65

All distances must be from the outer boundaries of the Section.

Operator <b>CARL A. SCHELLINGER</b>		Lease <b>REDDY - TRIGG FEDERAL</b>		Well No. <b>1</b>
Unit Letter <b>H</b>	Section <b>35</b>	Township <b>19 South</b>	Range <b>27 East</b>	County <b>Eddy</b>
Actual Footage Location of Well: <b>1980</b> feet from the <b>North</b> line and <b>660</b> feet from the <b>East</b> line				
Ground Level Elev. <b>3420.0</b>	Producing Formation <b>Morrow</b>	Pool <b>Angel Ranch</b>	Dedicated Acreage <b>320</b> Acres	

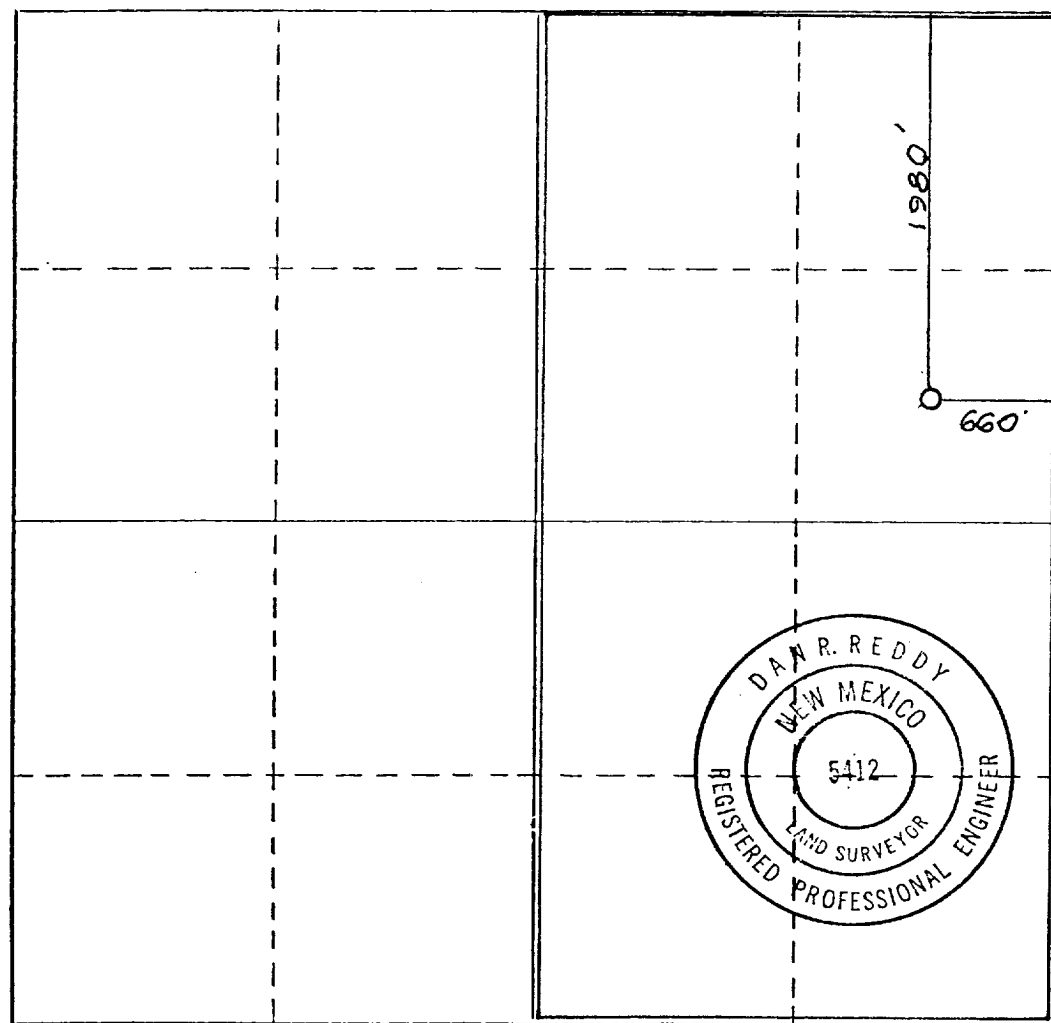
1. Outline the acreage dedicated to the subject well by colored pencil or hatchure marks on the plat below.
2. If more than one lease is dedicated to the well, outline each and identify the ownership (both as to working interest and royalty).
3. If more than one lease of different ownership is dedicated to the well, have the interests of all owners been consolidated by communitization, unitization, force-pooling, etc?

☐ Yes ☐ No If answer is "yes," type of consolidation \_\_\_\_\_

If answer is "no," list the owners and tract descriptions which have actually been consolidated. (Use reverse side of this form if necessary.) \_\_\_\_\_

No allowable will be assigned to the well until all interests have been consolidated (by communitization, unitization, forced-pooling, or otherwise) or until a non-standard unit, eliminating such interests, has been approved by the Commission.

**RECEIVED**  
**JUN 6 1978**  
**U.S. GEOLOGICAL SURVEY**  
**ARTESIA, NEW MEXICO**



## CERTIFICATION

I hereby certify that the information contained herein is true and complete to the best of my knowledge and belief.

Name  
**Carl A. Schellinger**

Position  
**Operator**

Company  
**--**

Date  
**May 30, 1978**

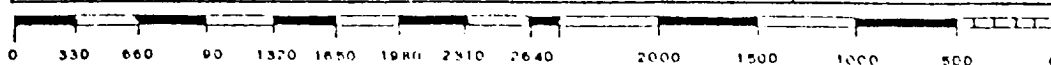
I hereby certify that the well location shown on this plat was plotted from field notes of actual surveys made by me or under my supervision, and that the same is true and correct to the best of my knowledge and belief.

Date Surveyed  
**5/23/78**

Registered Professional Engineer  
and/or Land Surveyor

**Dan R. Reddy**  
Certificate No.

**NMPE&LS# 5412**

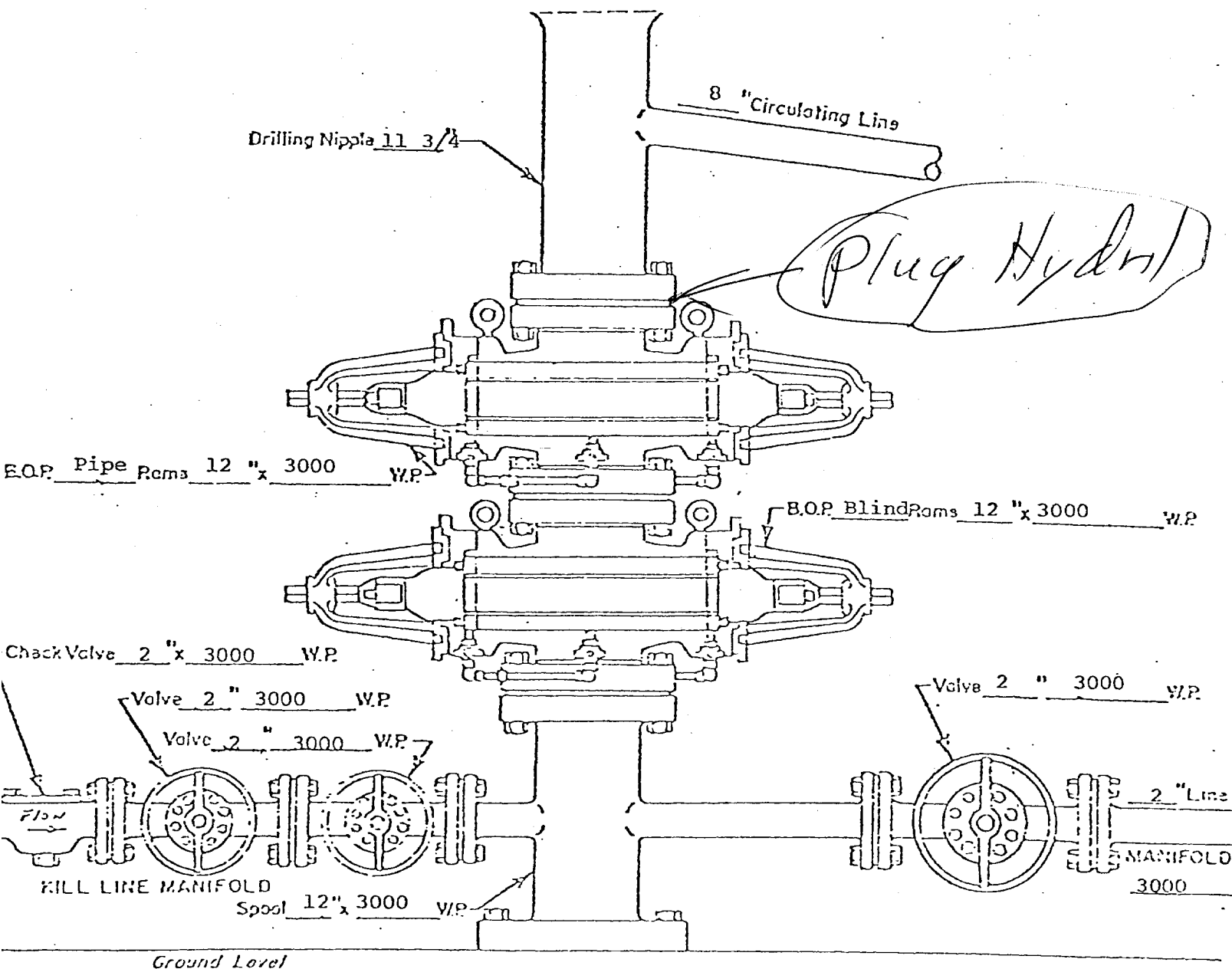


WELL NAME: Reddy-Trig Federal No. 1

LOCATION: 1980' FNL & 660' FEL Section 35,

T-19-S, R-27-E, NMPM, Eddy County, N.M.

Cameron 10", 900 Series, 5000# test, double gate, Space Saver BOP



SURFACE  
WELL HEAD B.O.P.  
3000 W.P.

☐ Manual  
☒ Hydraulic