

RECEIVED BY

JAN 2 1986

MEXICO OIL CONSERVATION COM. 51
WELL LOCATION AND ACREAGE DEDICATION PLATForm C-102
Supersedes C-128
Effective 1-1-65

All distances must be from the outer boundaries of the Section

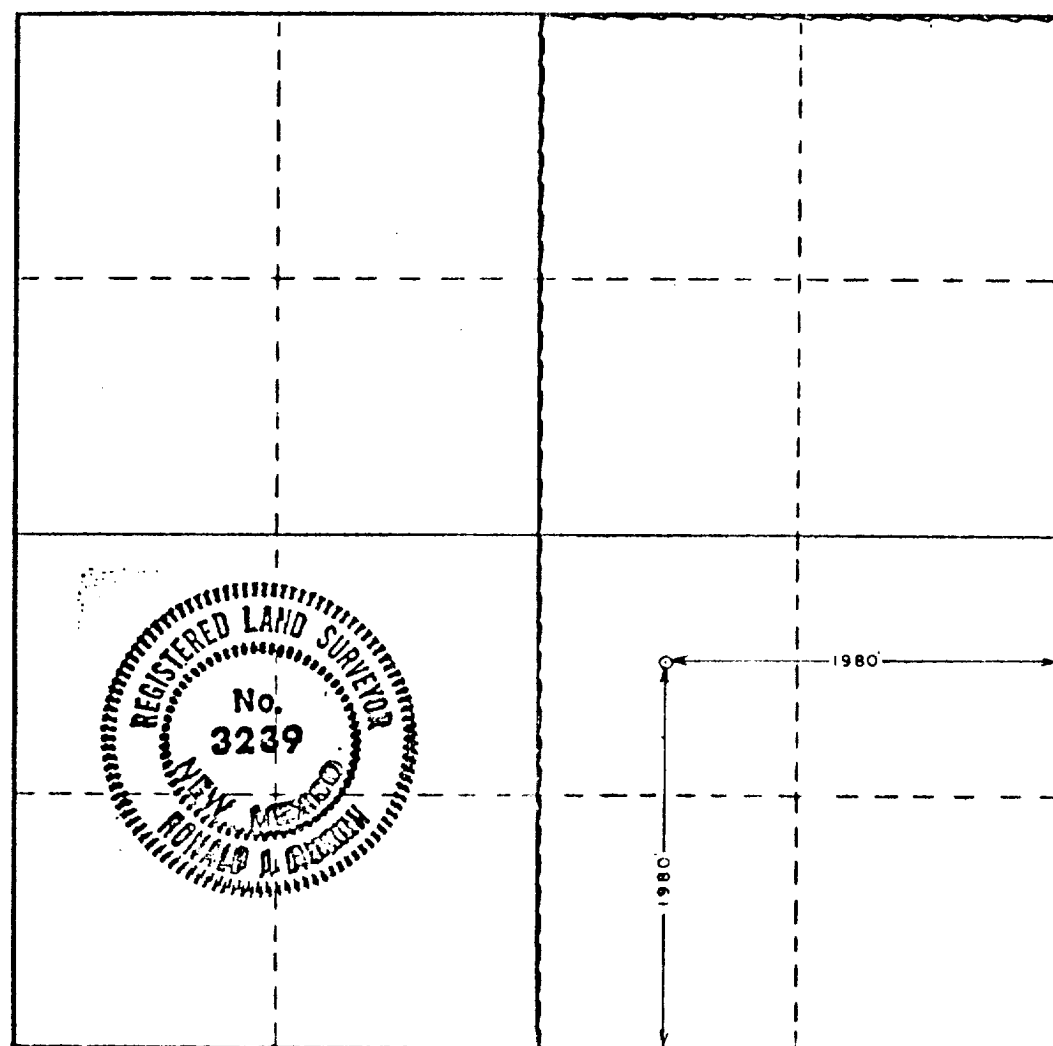
Operator O. C. D. Amoco Production Co.		Lease State GF		Well No. 1
Unit Letter J	Section 24	Township 19 South	Range 27 East	County Eddy
Actual Footage Location of Well:				
1980	feet from the	South	line and	1980
				feet from the
				East
Ground Level Elev. 3498.6	Producing Formation Morrow		Pool South Unit, P. No. 1 MILAN MORROW	Dedicated Acreage: 200 40 Acres

1. Outline the acreage dedicated to the subject well by colored pencil or hachure marks on the plat below.
2. If more than one lease is dedicated to the well, outline each and identify the ownership thereof (both as to working interest and royalty).
3. If more than one lease of different ownership is dedicated to the well, have the interests of all owners been consolidated by communitization, unitization, force-pooling, etc?

☐ Yes ☐ No If answer is "yes," type of consolidation _____

If answer is "no," list the owners and tract descriptions which have actually been consolidated. (Use reverse side of this form if necessary.) _____

No allowable will be assigned to the well until all interests have been consolidated (by communitization, unitization, forced-pooling, or otherwise) or until a non-standard unit, eliminating such interests, has been approved by the Commission.



CERTIFICATION

I hereby certify that the information contained herein is true and complete to the best of my knowledge and belief.

Name
Randy Atkins
Position
ADMINISTRATIVE ANALYST
Company
AMOCO PRODUCTION
Date
7-28-78

I hereby certify that the well location shown on this plat was plotted from field notes of actual surveys made by me or under my supervision, and that the same is true and correct to the best of my knowledge and belief.

Date Surveyed
July 25, 1978

Registered Professional Engineer
and/or Land Surveyor

Ronald L. Eidson

Certificate No. John W. West 676

Ronald L. Eidson 12/7/78