

NEW MEXICO OIL CONSERVATION COMMISSION
WELL LOCATION AND ACREAGE DEDICATION PLAT

Form O-101
Supersedes O-128
Effective 1-1-65

All distances must be from the outer boundaries of the Section

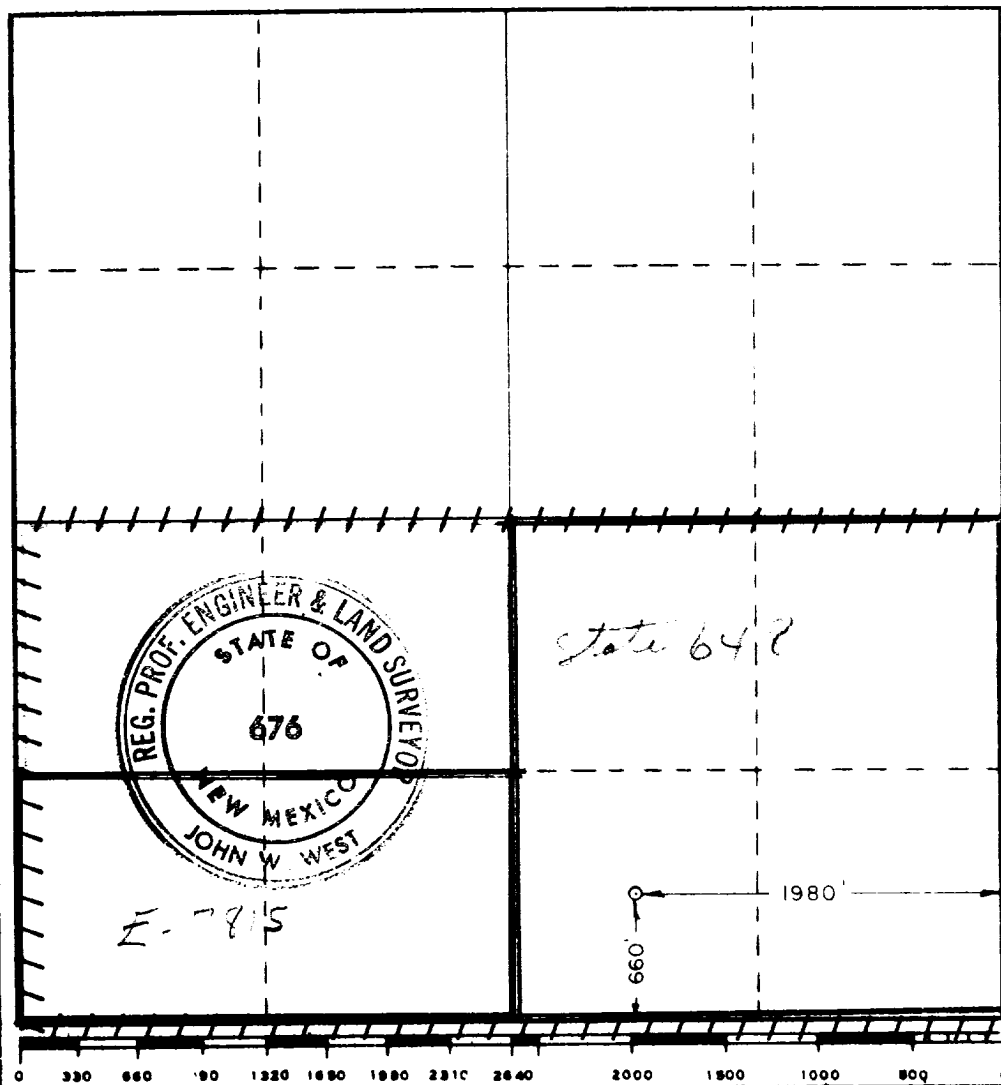
Operator Hondo Oil & Gas Company		Lease State CB Com.		Well No. 1
Unit Letter O	Section 29	Township 19 South	Range 28 East	County Eddy
Actual Footage Location of Well: 660 feet from the South line and 1980 feet from the East line				
Ground Level Elev. 3382.05	Producing Formation Morrow Gas	Pool Had. Winchester	Dedicated Acreage 320	

1. Outline the acreage dedicated to the subject well by colored pencil or hachure marks on the plat below.
2. If more than one lease is dedicated to the well, outline each and identify the ownership thereof (both as to working interest and royalty).
3. If more than one lease of different ownership is dedicated to the well, have the interests of all owners been consolidated by communitization, unitization, force-pooling, etc?

☒ Yes ☐ No If answer is "yes," type of consolidation Communitization

If answer is "no," list the owners and tract descriptions which have actually been consolidated (Use reverse side of this form if necessary.)

No allowable will be assigned to the well until all interests have been consolidated (by communitization, unitization, forced-pooling, or otherwise) or until a non-standard unit, eliminating such interests, has been approved by the Commission.



CERTIFICATION

I hereby certify that the information contained herein is true and complete to the best of my knowledge and belief.

Name Shay Knott
Position Dist. Drlg. Supt.
Company Atlantic Richfield Company
Date 10/12/78

I hereby certify that the well location shown on this plat was plotted from field notes of actual surveys made by me or under my supervision, and that the same is true and correct to the best of my knowledge and belief.

Date Surveyed 5/23/78
Registered Professional Engineer and/or Land Surveyor
John W. West
Certificate No. John W. West 676
Ronald J. Eidson 3239