

W MEXICO OIL CONSERVATION COMMISSION
WELL LOCATION AND ACREAGE DEDICATION PLAT

Form C-102
Supersedes C-128
Effective 1-1-65

All distances must be from the outer boundaries of the Section.

Operator Gulf Oil Corp.			Lease Jones Federal (NCT-B)			Well No. 2		
Tract Letter K	Section 33	Township 20 South	Range 25 East	County Eddy				
Actual Location of Well: 1930 feet from the South line and 1980 feet from the West line								
Ground Level Elev. 3642.6	Producing Formation Morrow		Pool land Cemetary Morrow			Dedicated Acreage: 320 Acres		

1. Outline the acreage dedicated to the subject well by colored pencil or hachure marks on the plat below.
2. If more than one lease is dedicated to the well, outline each and identify the ownership thereof (both as to working interest and royalty).
3. If more than one lease of different ownership is dedicated to the well, have the interests of all owners been consolidated by communitization, unitization, force-pooling, etc?

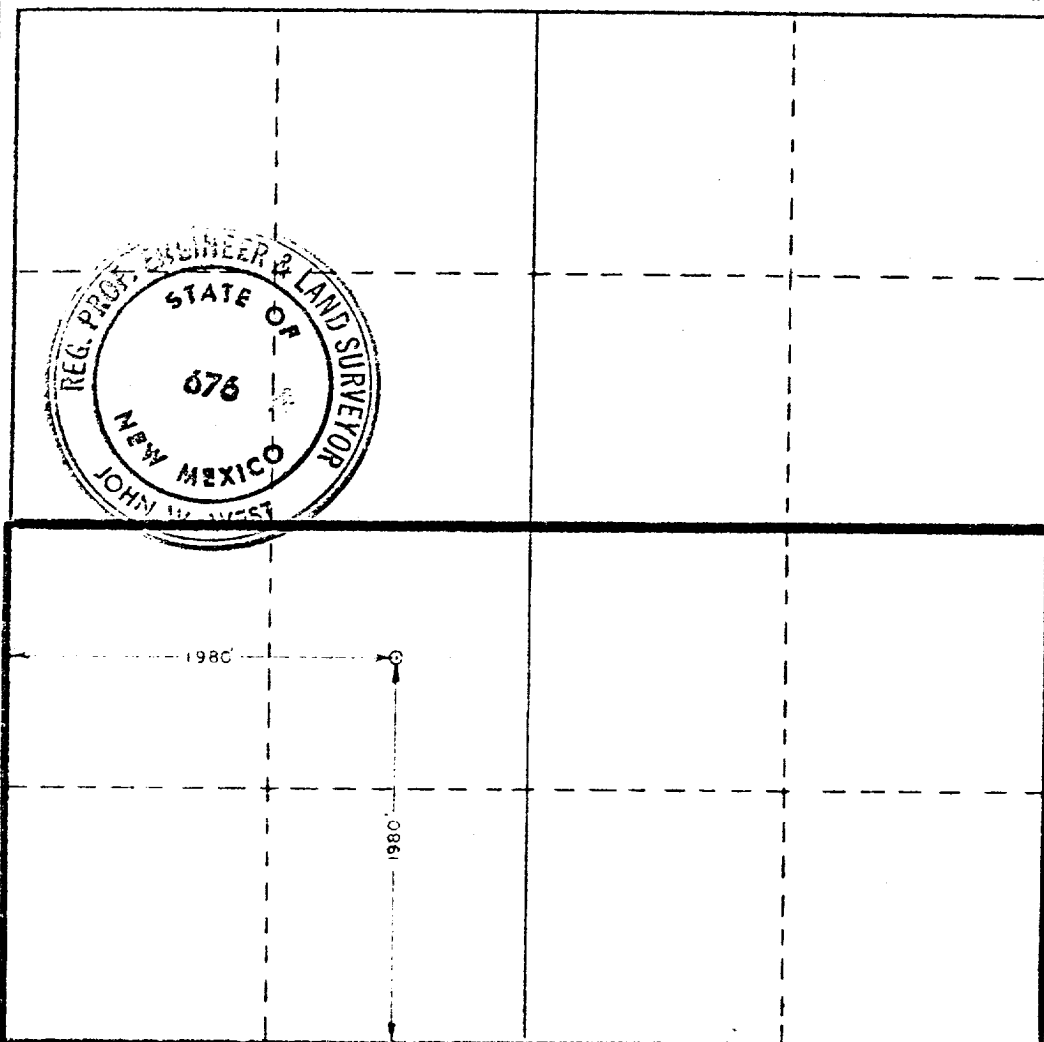
☐ Yes ☐ No If answer is "yes," type of consolidation

NOV 22 1978

If answer is "no," list the owners and tract descriptions which have actually been consolidated on the reverse side of this form if necessary.)

U.S. GEOLOGICAL SURVEY
ARTESIA, NEW MEXICO

No allowable will be assigned to the well until all interests have been consolidated (by communitization, unitization, forced-pooling, or otherwise) or until a non-standard unit, eliminating such interests, has been approved by the Commission.



CERTIFICATION

I hereby certify that the information contained herein is true and complete to the best of my knowledge and belief.

R. C. Anderson
Name
R. C. ANDERSON

Position
Area Production Manager

Company
GULF OIL CORPORATION

Date
11-21-78

I hereby certify that the well location shown on this plat was plotted from field notes of actual surveys made by me or under my supervision, and that the same is true and correct to the best of my knowledge and belief.

Date Surveyed
November 20, 1978

Registered Professional Engineer and/or Land Surveyor

John W. West

Certificate No. **John W. West 676**
Ronald J. Eidson 3239

0 330 660 990 1320 1650 1980 2310 2640 2970 3300 3630 3960 4290 4620 4950 5280 5610 5940 6270 6600