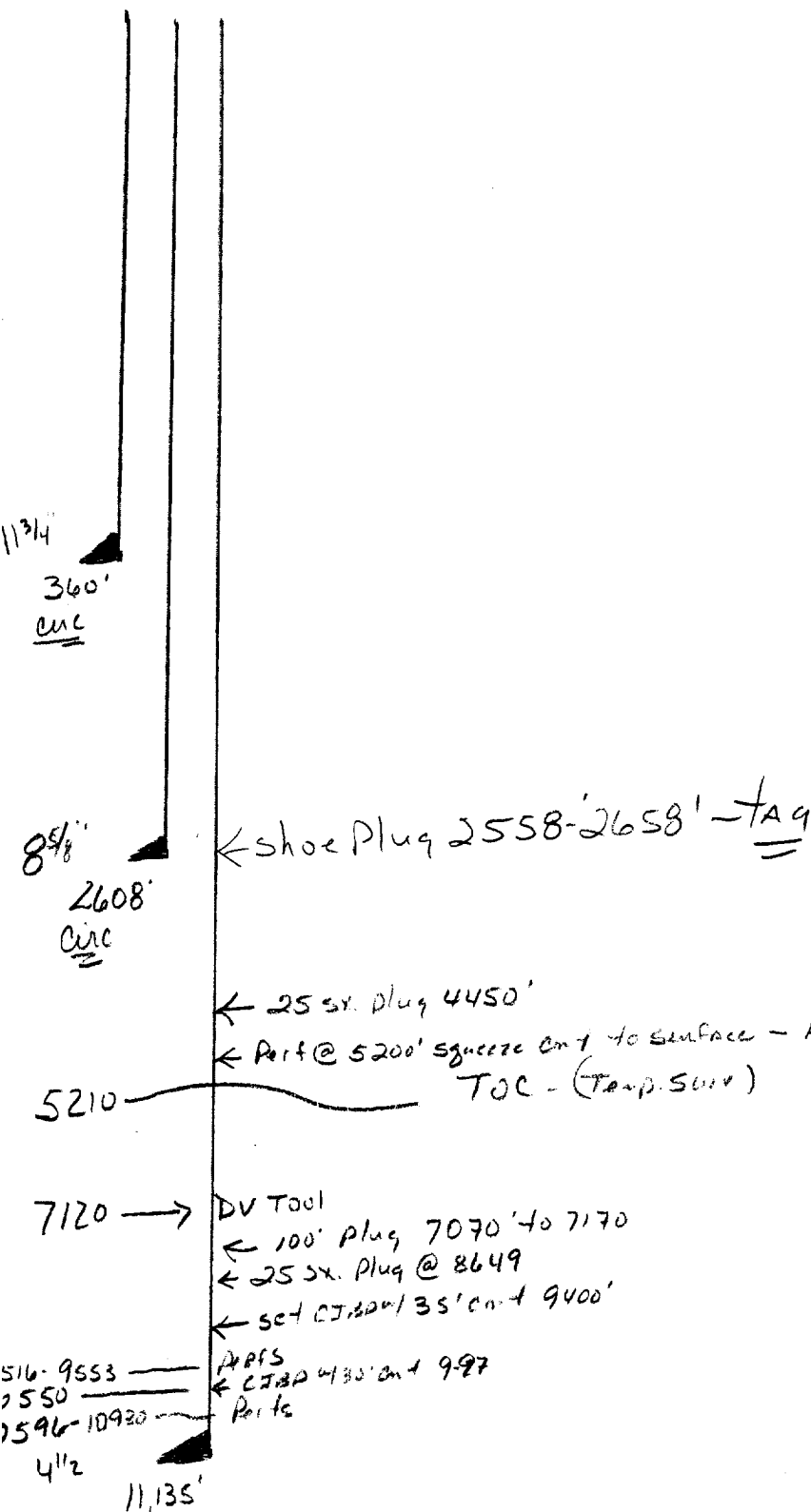


Operator SDX Resources Inc
 Well State 32 Com #1
 Unit B Section 32 Township 19 Range 28
 API # 30-015 -- 22826

T. Salt 300 T.O.P.S.
 B. Salt 522
 Yates _____
 Glorieta _____
 Delaware _____
 Bone Sp. 4450
 Abo _____
 Wolfcamp 8649
 Morrow _____
 Devonian _____
 Fusselman _____
 Other _____



- Contact OCD 24 hrs. prior to any work done.
- Salt gel mud consisting of 10# brine with 25# of gel per barrel must be placed between each plug
- Install dry hole marker as per rule 202.B.2
- Plugs are to be set from point indicated up.
- Plugs must not be less than 100' or 25 Sacks of cement, whichever is greater, unless specifically indicated.
- Shoe and stub plugs will be 50' above and below shoe or stub and tagged.
- Surface plug will be from 0' - 60'
- Where plugs are required cement must be placed inside and outside of all casing string(s), in the correct footage or sacks required, if no cement exists.
- Plugs to be tagged will be indicated.

778hde