

NO. OF COPIES RECEIVED 6
DISTRIBUTION
SANTA FE 1
FILE 1
U.S.G.S. 2
LAND OFFICE 1
OPERATOR 1

RECEIVED
NEW MEXICO OIL CONSERVATION COMMISSION
MAR 23 1979
O. C. C.
ARTESIA, OFFICE

30-015-22887
Form C-101
Revised 1-1-65

5A. Indicate Type of Lease
STATE X FEE
5. State Oil & Gas Lease No.
L-2764

APPLICATION FOR PERMIT TO DRILL, DEEPEN, OR PLUG BACK
1a. Type of Work
b. Type of Well DRILL X DEEPEN PLUG BACK
2. Name of Operator Yates Petroleum Corporation
3. Address of Operator 207 South 4th Street - Artesia, NM
4. Location of Well UNIT LETTER P LOCATED 330' FEET FROM THE South LINE
AND 345 FEET FROM THE East LINE OF SEC. 2 TWP. 19S RGE. 24E NMPM
12. County Eddy
19. Proposed Depth 3000
19A. Formation Yeso
20. Rotary or C.T. Rotary
21. Elevations (Show whether DF, RT, etc.) 3652' GR
21A. Kind & Status Plug. Bond Blanket
21B. Drilling Contractor L & M Drilling Co.
22. Approx. Date Work will start After rig is skidded

Table with 6 columns: SIZE OF HOLE, SIZE OF CASING, WEIGHT PER FOOT, SETTING DEPTH, SACKS OF CEMENT, EST. TOP. Rows include 20" hole with 16" casing, 15" hole with 10-3/4" casing, 9 1/2" hole with 7" casing, and 6 1/4" hole with 5 1/2" or 4 1/2" casing.

Drilled hole to 20' and well started caving-moved location 15' west of the Original location dated March 15, 1979.
Propose to drill and test the Yeso and San Andres formations. Will set 30' of conductor pipe and cement to surface w/Ready mix. Approx. 300' of surface casing will be set to shut off gravel and caving and intermediate casing will be set at least 100' below the Artesian Water Zone. A tapered 5 1/2" & 4 1/2" production casing will be run, perforated and Sand-frac'd for production.
Mud Program: Fresh water Gel to 920', fresh water to TD.
BOP Program: BOP's will be installed on 7" casing and tested.

APPROVAL VALID
FOR 90 DAYS UNLESS
DRILLING COMMENCED,
EXPIRES 6-23-79

IN ABOVE SPACE DESCRIBE PROPOSED PROGRAM: IF PROPOSAL IS TO DEEPEN OR PLUG BACK, GIVE DATA ON PRESENT PRODUCTIVE ZONE AND PROPOSED NEW PRODUCTIVE ZONE. GIVE BLOWOUT PREVENTER PROGRAM, IF ANY.

I hereby certify that the information above is true and complete to the best of my knowledge and belief.
Signed Christine Tomlinson Title Geol. Secty, Date 3-22-79

(This space for State Use)
APPROVED BY W.A. Gussert TITLE SUPERVISOR, DISTRICT II DATE MAR 23 1979

CONDITIONS OF APPROVAL, IF ANY:
Cement must be circulated to surface below 10 3/4" casing
Notify N.M.O.C.C. in sufficient time to witness cementing the 7" casing

NEW MEXICO OIL CONSERVATION COMMISSION
WELL LOCATION AND ACREAGE DEDICATION AT

Form C-102
 Supersedes C-128
 Effective 1-1-65

All distances must be from the outer boundaries of the Section.

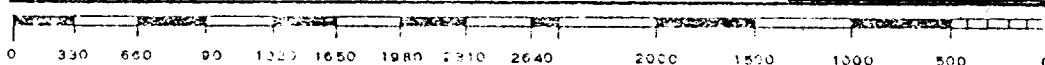
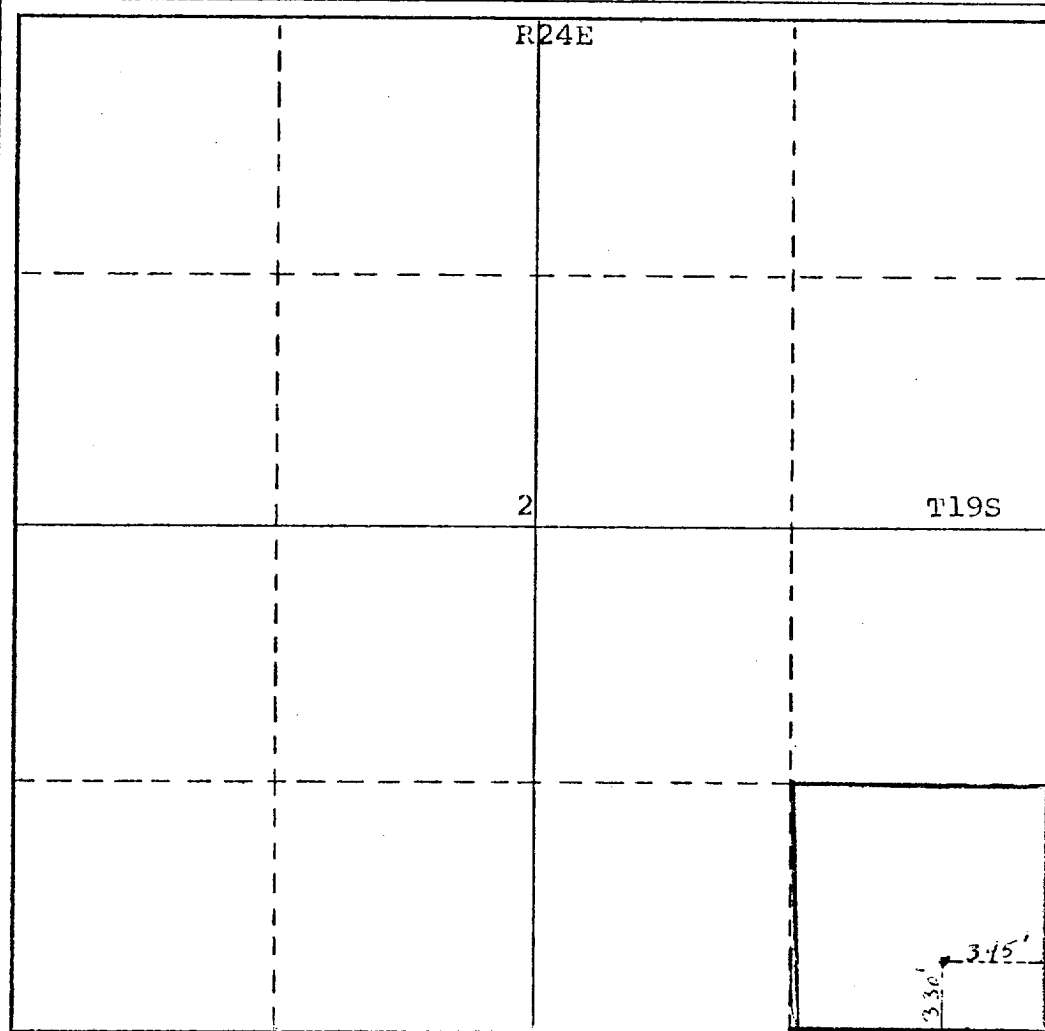
Operator Yates Petroleum Corporation			Lease Irish Hill KW State		Well No. 1-4
Unit Letter P	Section 2	Township 19S	Range 24E	County Eddy	
Actual Footage Location of Well:					
330 feet from the South line and		345' feet from the East line			
Ground Level Elev. 3652'	Producing Formation Yeso	Pool Undesignated Penasco Draw Yeso SA		Dedicated Acreage: 40 Acres	

1. Outline the acreage dedicated to the subject well by colored pencil or hachure marks on the plat below.
2. If more than one lease is dedicated to the well, outline each and identify the ownership thereof (both as to working interest and royalty).
3. If more than one lease of different ownership is dedicated to the well, have the interests of all owners been consolidated by communitization, unitization, force-pooling, etc?

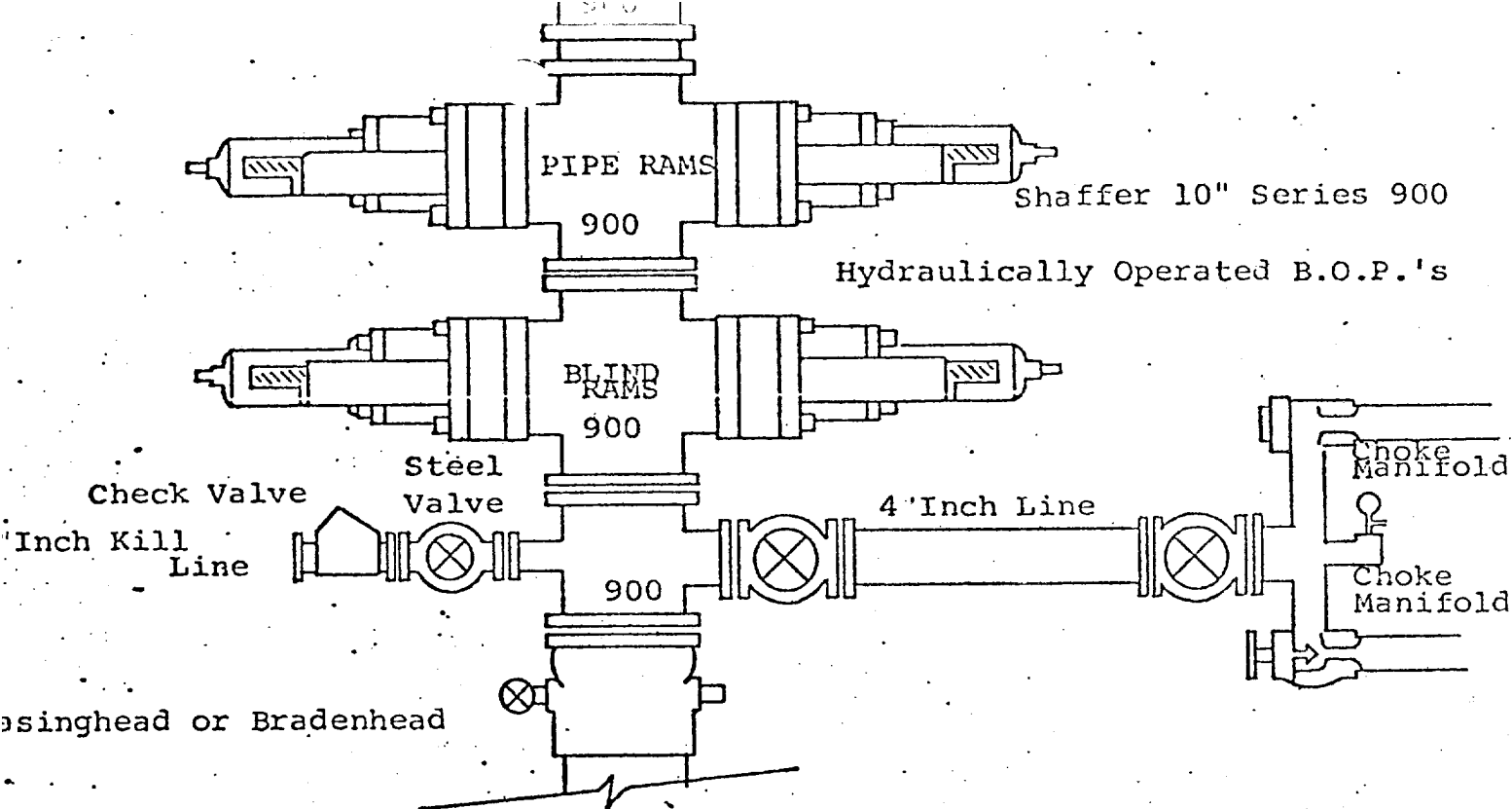
☐ Yes ☐ No If answer is "yes," type of consolidation _____

If answer is "no," list the owners and tract descriptions which have actually been consolidated. (Use reverse side of this form if necessary.) _____

No allowable will be assigned to the well until all interests have been consolidated (by communitization, unitization, forced-pooling, or otherwise) or until a non-standard unit, eliminating such interests, has been approved by the Commission.



CERTIFICATION	
I hereby certify that the information contained herein is true and complete to the best of my knowledge and belief.	
<i>Eddie M. Mahfood</i>	
Name	Eddie M. Mahfood
Position	Engineer
Company	Yates Petroleum Corp
Date	3-15-79
I hereby certify that the well location shown on this plat was plotted from field notes of actual surveys made by me or under my supervision, and that the same is true and correct to the best of my knowledge and belief.	
Refer to Original Plat	
Date Surveyed	Dated 3-14-79
Registered Professional Engineer and/or Land Surveyor	
Certificate No.	



THE FOLLOWING CONSTITUTE MINIMUM BLOWOUT PREVENTER REQUIREMENTS

- . All preventers to be hydraulically operated with secondary manual controls installed prior to drilling out from under casing.
- . Choke outlet to be a minimum of 4" diameter.
- . Kill line to be of all steel construction of 2" minimum diameter.
- . All connections from operating manifolds to preventers to be all steel.
- . hole or tube a minimum of one inch in diameter.
- . The available closing pressure shall be at least 15% in excess of that required with sufficient volume to operate the B.O.P.'s.
- . All connections to and from preventer to have a pressure rating equivalent to that of the B.O.P.'s.
- . Inside blowout preventer to be available on rig floor.
- . Operating controls located a safe distance from the rig floor.
- . Hole must be kept filled on trips below intermediate casing. Operator not responsible for blowouts resulting from not keeping hole full.
- . D. P. float must be installed and used below zone of first gas intrusion.