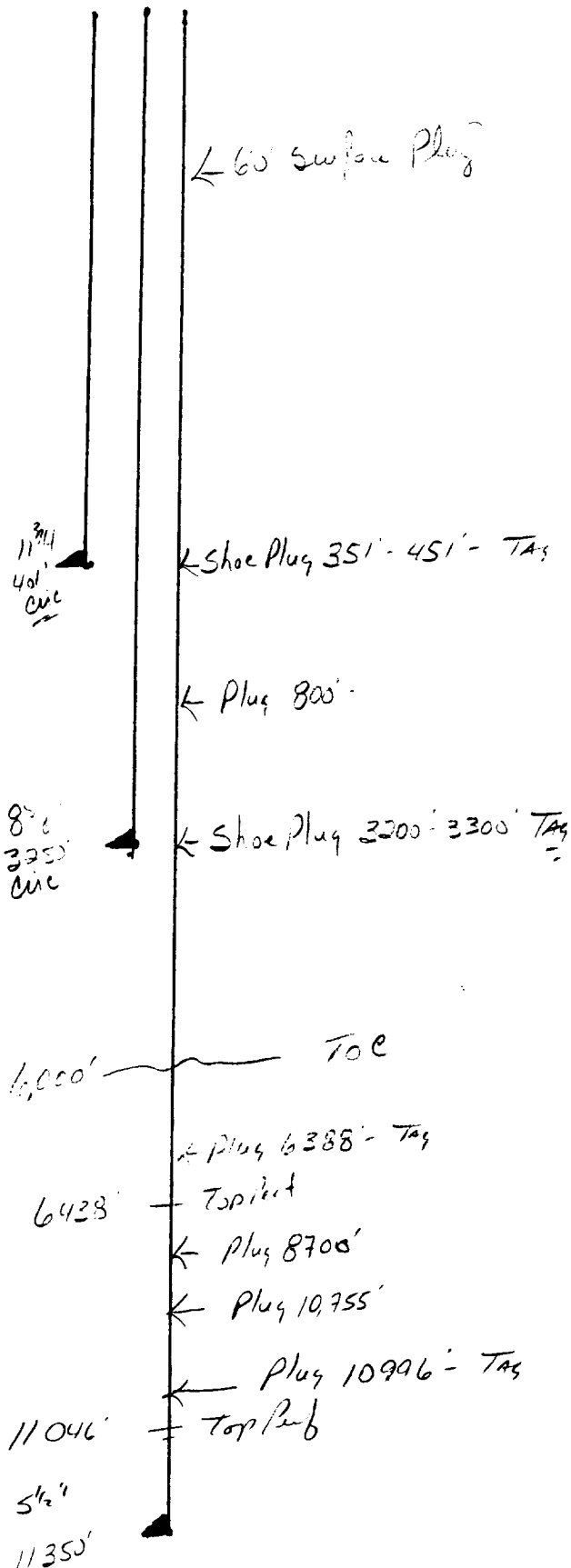


Operator Bass Ent. Prod  
 Well Merchant + #1  
 Unit H Section 1 Township 19 Range 28  
 API # 30-015-22941

TOPS

Dates 785  
 T. Salt 350  
 B. Salt 600  
 Glorieta \_\_\_\_\_  
 Bone Sp. 6432  
 Abo \_\_\_\_\_  
 Wolfcamp 8700  
 Morrow 10755  
 Devonian \_\_\_\_\_  
 Fusselman \_\_\_\_\_  
 Other \_\_\_\_\_



- Contact OCD 24 hrs. prior to any work done.
- Salt gel mud consisting of 10# brine with 25# of gel per barrel must be placed between each plug
- Install dry hole marker as per rule 202.B.2
- Plugs are to be set from point indicated up. Plugs must not be less than 100' or 25 Sacks of cement, whichever is greater.
- Shoe and stub plugs will be 50' above and below shoe or stub and tagged.
- Surface plug will be from 0' - 60'
- Where plugs are required cement must be placed inside and outside of all casing string(s), in the correct footage or sacks required, if no cement exists.
- Plugs to be tagged will be indicated.