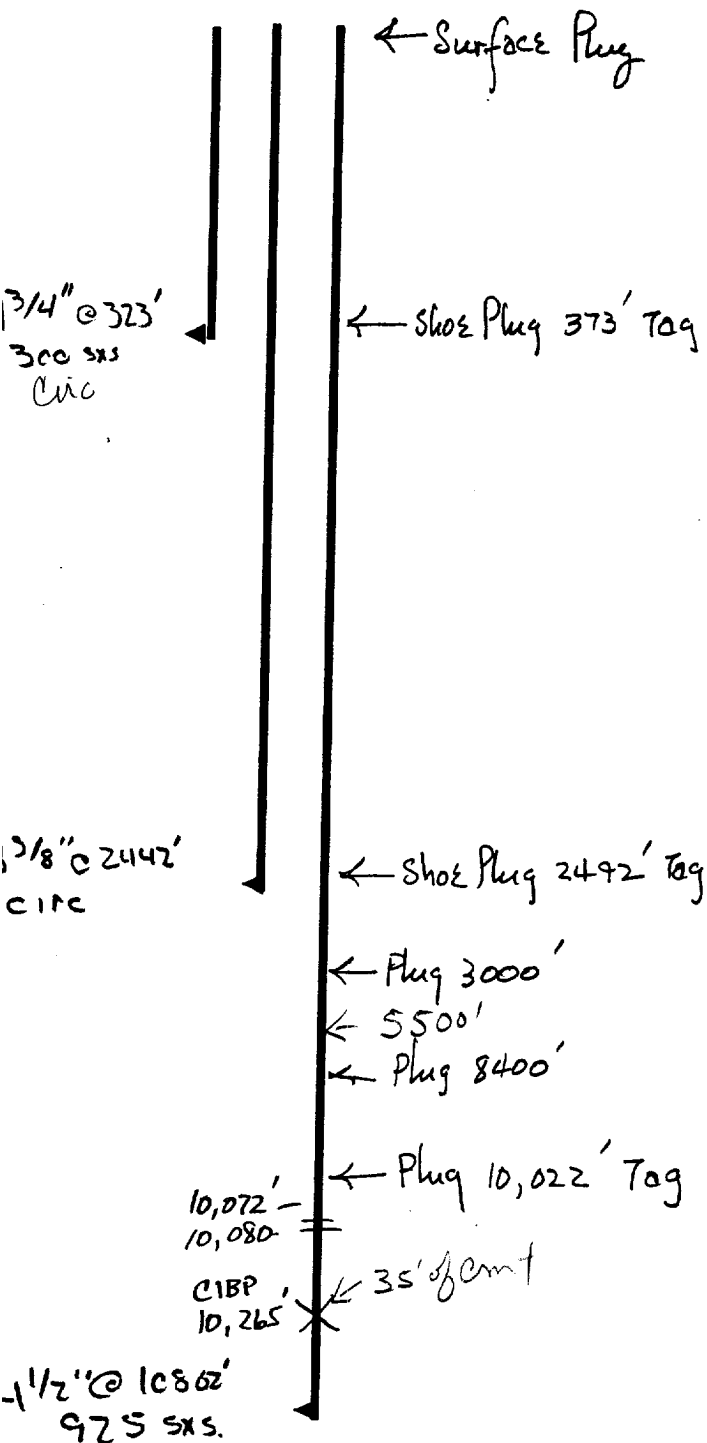


Operator Ray Westall  
 Well State G Com. #1  
 Unit E Section 24 Township 19 Range 27  
 API # 30-015-22955

TOPS

Bowers	~1250'
Queen	~1310'
Grayburg	1640'
San Andres	2240'
Bear Springs	~3000'
Gulfcamp	~8400'
Penn	8630'
Stam	9348'
Atoka	10046'
Morrow Limestone	10408'
Morrow Clastics	10518'



- \* Contact OCD 24 hrs. prior to any work done.
- \* Salt gel mud consisting of 10# brine with 25# of gel per barrel must be placed between each plug.
- \* Install dry hole marker as per Rule 202.B.2
- \* Plugs are to be set from point indicated up.
- \* Plugs must not be less than 100' or 25 Sacks of cement, whichever is greater, unless specifically indicated.
- \* Shoe and stub plugs will be 50' above and below shoe or stub and tagged.
- \* Surface plug will be from 0' - 60'
- \* Where plugs are required, cement must be placed inside and outside of all casing string(s) in the correct footage or sacks required, if no cement exists.
- \* Plugs to be tagged will be indicated.

*Handwritten signature/initials*