

NO. OF COPIES RECEIVED	6
DISTRIBUTION	
SANTA FE	1
FILE	1 ✓
U.S.G.S.	2
LAND OFFICE	1
OPERATOR	1

NEW MEXICO OIL CONSERVATION COMMISSION  
**RECEIVED**

AUG 31 1979

O. C. C.

30-015-22996

Form C-101  
Revised 1-4-65

5A. Indicate Type of Lease STATE <input checked="" type="checkbox"/> FEE <input type="checkbox"/>
5. State Oil & Gas Lease No. L2919
7. Unit Agreement Name
8. Farm or Lease Name SRC State KZ
9. Well No. 3
10. Field and Pool, or Wildcat Penasco Draw SA-Yeso Assoc.
12. County Eddy
19. Proposed Depth 3100'
19A. Formation Yeso
20. Rotary or C.T. Rotary
21. Elevations (Show whether DF, RT, etc.) 3666'
21A. Kind & Status Plug. Bond Blanket
21B. Drilling Contractor Artesia Fishing Tool Co.
22. Approx. Date Work will start As soon as approved

1a. Type of Work b. Type of Well OIL WELL <input checked="" type="checkbox"/> GAS WELL <input type="checkbox"/> OTHER <input type="checkbox"/>		DEEPEN <input type="checkbox"/> PLUG BACK <input type="checkbox"/>	
2. Name of Operator Yates Petroleum Corporation			
3. Address of Operator 207 South Fourth Street, Artesia, NM 88210			
4. Location of Well UNIT LETTER H LOCATED 2310 FEET FROM THE North LINE AND 330 FEET FROM THE East LINE OF SEC. 1 TWP. 19S RGE. 24E NMPM			
21. Elevations (Show whether DF, RT, etc.) 3666'			
21A. Kind & Status Plug. Bond Blanket			
21B. Drilling Contractor Artesia Fishing Tool Co.			
22. Approx. Date Work will start As soon as approved			

23. PROPOSED CASING AND CEMENT PROGRAM					
SIZE OF HOLE	SIZE OF CASING	WEIGHT PER FOOT	SETTING DEPTH	SACKS OF CEMENT	EST. TOP
15"	10 3/4"	32.3# J-55	Approx. 310'	250	circulate
9 1/2"	7"	20# J-55	Approx. 970'	550	circulate
6 1/4"	4 1/2"	9.5# J-55	Approx. 3100'	300	circulate

We propose to drill and test the Yeso and San Andres formations. Approx. 310' of surface casing will be set to shut off gravel and caving. Intermediate casing will be set at least 100' below the Artesian Water Zone. 4 1/2" production casing will be run, perforated and possibly sand frac'd for production.

Mud Program: Fresh water Gel to 970' fresh water to TD.

BOP PROGRAM: BOP's will be installed on 7" casing and tested.

APPROVAL VALID  
FOR 90 DAYS UNLESS  
DRILLING COMMENCED,

EXPIRES 12-4-79

IN ABOVE SPACE DESCRIBE PROPOSED PROGRAM: IF PROPOSAL IS TO DEEPEN OR PLUG BACK, GIVE DATA ON PRESENT PRODUCTIVE ZONE AND PROPOSED NEW PRODUCTIVE ZONE. GIVE BLOWOUT PREVENTER PROGRAM, IF ANY.

I hereby certify that the information above is true and complete to the best of my knowledge and belief.

Signed Alvin Rodriguez Title Geographer Date 8-29-79

(This space for State Use)

APPROVED BY W.A. Gussert TITLE SUPERVISOR, DISTRICT II DATE SEP 4 1979

CONDITIONS OF APPROVAL, IF ANY:

Cement must be circulated to  
surface behind all casing

Notify N.M.O.C.C. in sufficient  
time to witness cementing

NEW MEXICO OIL CONSERVATION COMMISSION  
WELL LOCATION AND ACREAGE DEDICATION PLAT

Form C-102  
Supersedes C-128  
Effective 1-1-65

All distances must be from the outer boundaries of the Section.

Operator <b>Yates Petroleum Corporation</b>			Lease <b>SRC State KZ</b>		Well No. <b>3</b>
Unit Number <b>1</b>	Section <b>1</b>	Township <b>19 South</b>	Range <b>24 East</b>	County <b>Eddy</b>	
Approximate Location of Well: <b>2310</b> feet from the <b>North</b> line and <b>330</b> feet from the <b>East</b> line					
Ground Level Elev. <b>3662</b>	Producing Formation <b>YESO</b>	Pool <b>PELASCO DRAW SA-YESO Assoc</b>		Dedicated Acreage: <b>40</b>	Acre

1. Outline the acreage dedicated to the subject well by colored pencil or hachure marks on the plat below.
2. If more than one lease is dedicated to the well, outline each and identify the ownership thereof (both as to working interest and royalty).
3. If more than one lease of different ownership is dedicated to the well, have all interests of all owners been consolidated by communitization, unitization, force-pooling, etc?

RECEIVED

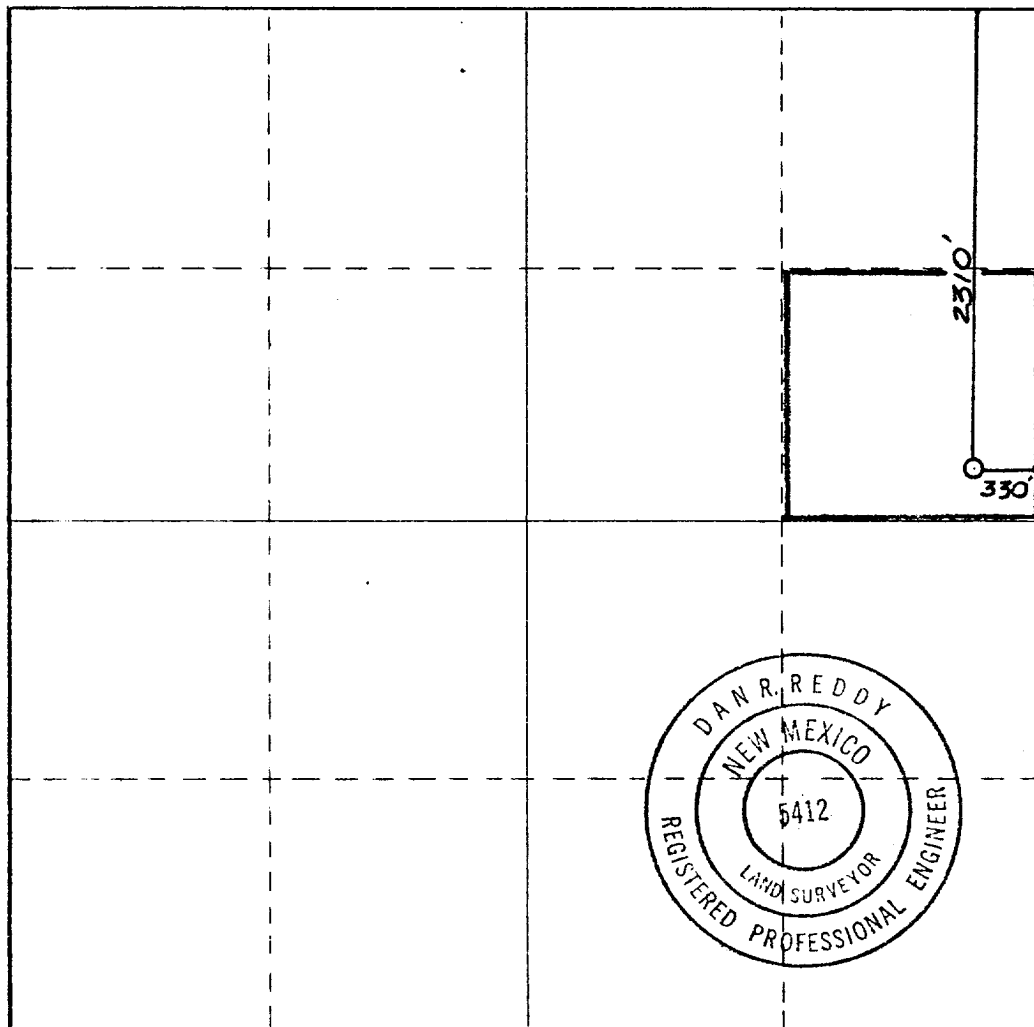
AUG 30 1979

☐ Yes ☐ No If answer is "yes," type of consolidation O. C. C.

ARTESIA, OFFICE

If answer is "no," list the owners and tract descriptions which have actually been consolidated. (Use reverse side of this form if necessary.)

No allowable will be assigned to the well until all interests have been consolidated (by communitization, unitization, forced-pooling, or otherwise) or until a non-standard unit, eliminating such interests, has been approved by the Commission.



CERTIFICATION

I hereby certify that the information contained herein is true and complete to the best of my knowledge and belief.

*Gliserio Rodriguez*  
Name  
**GLISERIO RODRIGUEZ**  
Position  
**GEOGRAPHER**  
Company  
**YATES PETROLEUM CORP.**  
Date  
**8-30-79**

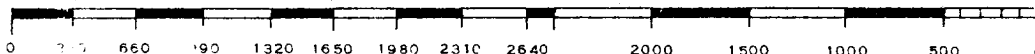
I hereby certify that the well location shown on this plat was plotted from field notes of actual surveys made by me or under my supervision, and that the same is true and correct to the best of my knowledge and belief.

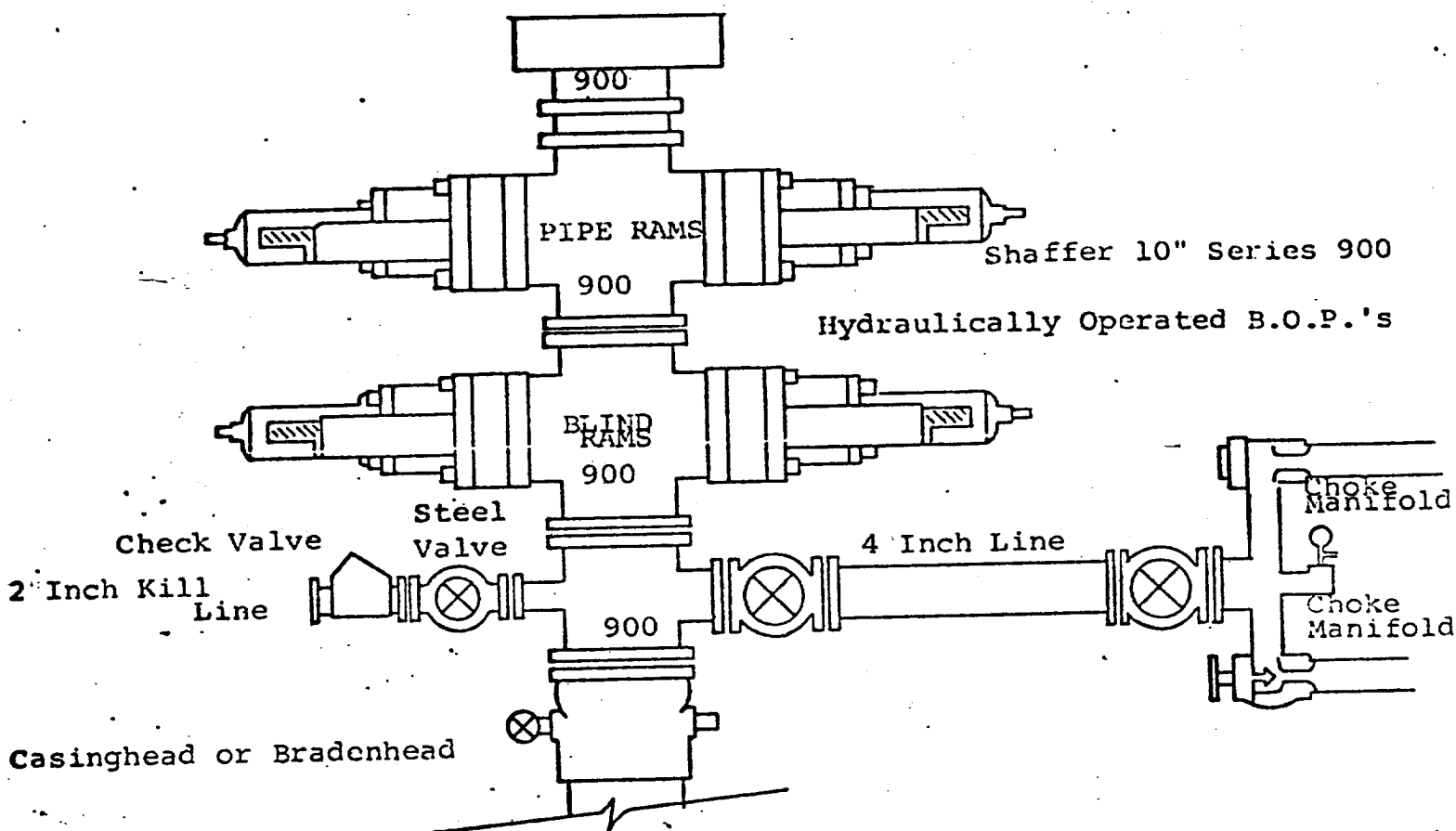
Date Surveyed  
**Aug. 30, 1979**

Registered Professional Engineer and/or Land Surveyor

*Dan R. Reddy*  
Certificate No.

NMPE&LS #5412





THE FOLLOWING CONSTITUTE MINIMUM BLOWOUT PREVENTER REQUIREMENTS.

1. All preventers to be hydraulically operated with secondary manual controls installed prior to drilling out from under casing.
2. Choke outlet to be a minimum of 4" diameter.
3. Kill line to be of all steel construction of 2" minimum diameter.
4. All connections from operating manifolds to preventers to be all steel hole or tube a minimum of one inch in diameter.
5. The available closing pressure shall be at least 15% in excess of that required with sufficient volume to operate the B.O.P.'s.
6. All connections to and from preventer to have a pressure rating equivalent to that of the B.O.P.'s.
7. Inside blowout preventer to be available on rig floor.
8. Operating controls located a safe distance from the rig floor.
9. Hole must be kept filled on trips below intermediate casing. Operator not responsible for blowouts resulting from not keeping hole full.
10. D. P. float must be installed and used below zone of first gas intrusion.