

NO. OF COPIES RECEIVED	6
DISTRIBUTION	
SANTA FE	1
FILE	1 ✓
U.S.G.S.	2
LAND OFFICE	1
OPERATOR	1

NEW MEXICO OIL CONSERVATION COMMISSION

AUG 30 1979

O. C. C.
ARTESIA, OFFICE

30-015-22997

Form C-101
Revised 1-4-65

5A. Indicate Type of Lease	
STATE <input checked="" type="checkbox"/>	FEE <input type="checkbox"/>
5. State Oil & Gas Lease No. L-2919	
7. Unit Agreement Name	
8. Farm or Lease Name SRC State KZ	
9. Well No. 4	
10. Field and Pool, or Wildcat Penasco Draw SA-Yeso Assoc	
12. County Eddy	
19. Proposed Depth 3100'	19A. Formation Yeso
20. Rotary or C.T. Rotary	
21. Elevations (Show whether DF, RT, etc.) 3671'	21A. Kind & Status Plug. Bond Blanket
21B. Drilling Contractor Artesia Fishing Tool Co.	22. Approx. Date Work will start As soon as possible

APPLICATION FOR PERMIT TO DRILL, DEEPEN, OR PLUG BACK

1a. Type of Work	
DRILL <input checked="" type="checkbox"/>	DEEPEN <input type="checkbox"/> PLUG BACK <input type="checkbox"/>
b. Type of Well	
OIL WELL <input checked="" type="checkbox"/>	GAS WELL <input type="checkbox"/> OTHER <input type="checkbox"/>
2. Name of Operator Yates Petroleum Corporation	
3. Address of Operator 207 South Fourth Street, Artesia, NM 88210	
4. Location of Well	
UNIT LETTER <u>F</u>	LOCATED <u>2310</u> FEET FROM THE <u>North</u> LINE
AND <u>2310</u>	FEET FROM THE <u>West</u> LINE OF SEC. <u>1</u> TWP. <u>19S</u> RGE. <u>24E</u> NMPM
21. Elevations (Show whether DF, RT, etc.) 3671'	
21A. Kind & Status Plug. Bond Blanket	
21B. Drilling Contractor Artesia Fishing Tool Co.	
22. Approx. Date Work will start As soon as possible	

23.

PROPOSED CASING AND CEMENT PROGRAM

SIZE OF HOLE	SIZE OF CASING	WEIGHT PER FOOT	SETTING DEPTH	SACKS OF CEMENT	EST. TOP
15"	10 3/4"	32.3# J-55	Approx. 310'	250	circulate
9 1/2"	7"	20# J-55	Approx. 970'	550	circulate
6 1/2"	4 1/2"	9.5# J-55	Approx. 3100'	300	circulate

We propose to drill and test the Yeso and San Andres formations. Approx. 310' of surface casing will be set to shut off gravel and caving. Intermediate casing will be set at least 100' below the Artesian Water Zone. 4 1/2 production casing will be run, perforated and possible sand frac'd for production.

Mud Program: Fresh water Gel to 970' fresh water to TD.

BOP Program: BOP's will be installed on 7" casing and tested.

APPROVAL VALID
FOR 90 DAYS UNLESS
DRILLING COMMENCED,

EXPIRES 12-4-79

IN ABOVE SPACE DESCRIBE PROPOSED PROGRAM: IF PROPOSAL IS TO DEEPEN OR PLUG BACK, GIVE DATA ON PRESENT PRODUCTIVE ZONE AND PROPOSED NEW PRODUCTIVE ZONE. GIVE BLOWOUT PREVENTER PROGRAM, IF ANY.

I hereby certify that the information above is true and complete to the best of my knowledge and belief.

Signed Alvaro Rodriguez Title Geographer Date 8-29-79
(This space for State Use)

APPROVED BY W. A. Gross TITLE SUPERVISOR, DISTRICT II DATE SEP 4 1979

CONDITIONS OF APPROVAL, IF ANY:

Cement must be circulated to
surface behind all casing

Notify N.M.O.C.C. in sufficient
time to witness cementing
the 7" casing

**NEW MEXICO OIL CONSERVATION COMMISSION
WELL LOCATION AND ACREAGE DEDICATION PLAT**

Form C-102
Supersedes C-128
Effective 1-1-65

All distances must be from the outer boundaries of the Section.

Operator Yates Petroleum Corporation			Lease SRC State KZ		Well No. 4
Unit Letter F	Section 1	Township 19 South	Range 24 East	County Eddy	
Actual Footage Location of Well: 2310 feet from the North line and 2310 feet from the West line					
Ground Level Elev: 3671	Producing Formation YESO	Pool PENASCO DRAW SA-YESO ASSOC.		Dedicated Acreage: 40 Acres	

1. Outline the acreage dedicated to the subject well by colored pencil or hachure marks on the plat below.
2. If more than one lease is dedicated to the well, outline each and identify the ownership thereof (both as to working interest and royalty).
3. If more than one lease of different ownership is dedicated to the well, have the interests of all owners been consolidated by communitization, unitization, force-pooling, etc?

**RECEIVED
AUG 30 1979**

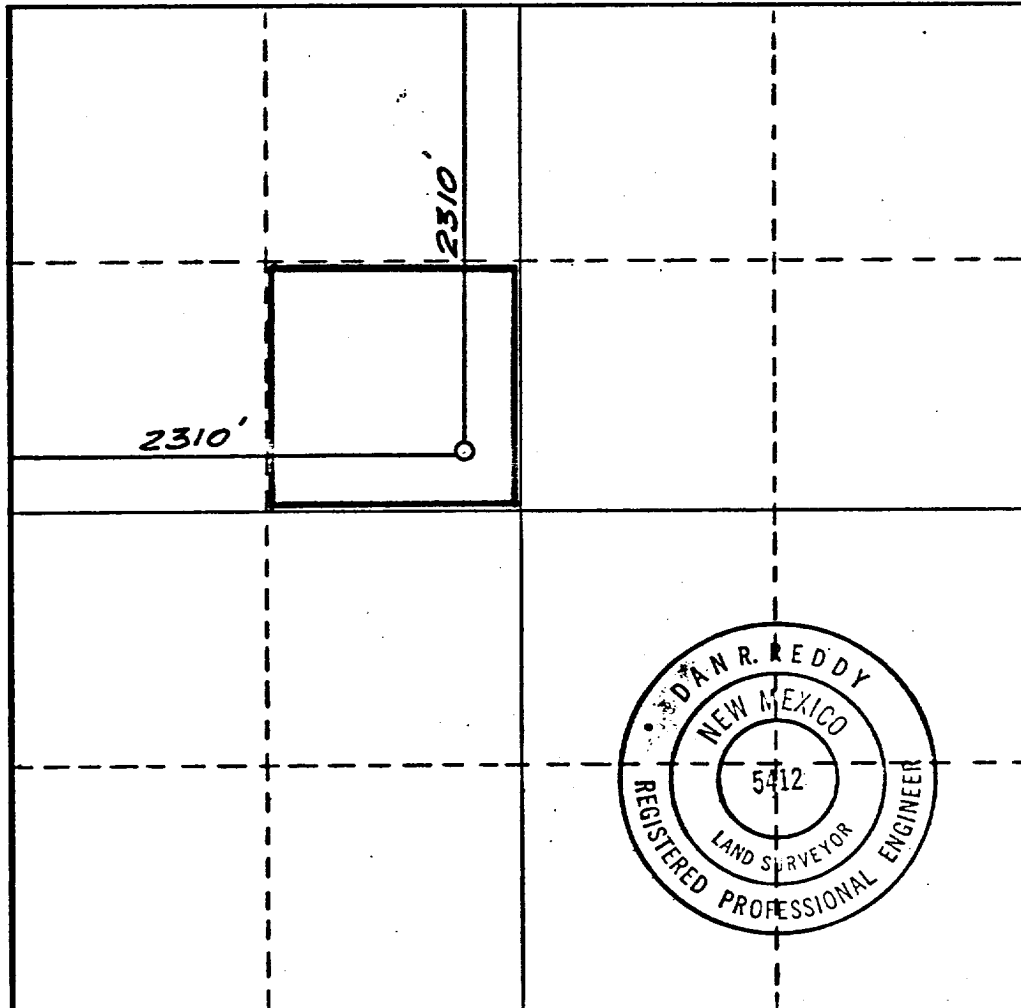
O. C. C.

ARTESIA, OFFICE

☐ Yes ☐ No If answer is "yes," type of consolidation

If answer is "no," list the owners and tract descriptions which have actually been consolidated. (Use reverse side of this form if necessary.)

No allowable will be assigned to the well until all interests have been consolidated (by communitization, unitization, forced-pooling, or otherwise) or until a non-standard unit, eliminating such interests, has been approved by the Commission.



CERTIFICATION

I hereby certify that the information contained herein is true and complete to the best of my knowledge and belief.

Gliserio Rodriguez
Name

GLISERIO RODRIGUEZ

Position

GEOGRAPHER

Company

YATES PETROLEUM CORP.

Date

8-29-79

I hereby certify that the well location shown on this plat was plotted from field notes of actual surveys made by me or under my supervision, and that the same is true and correct to the best of my knowledge and belief.

Date Surveyed

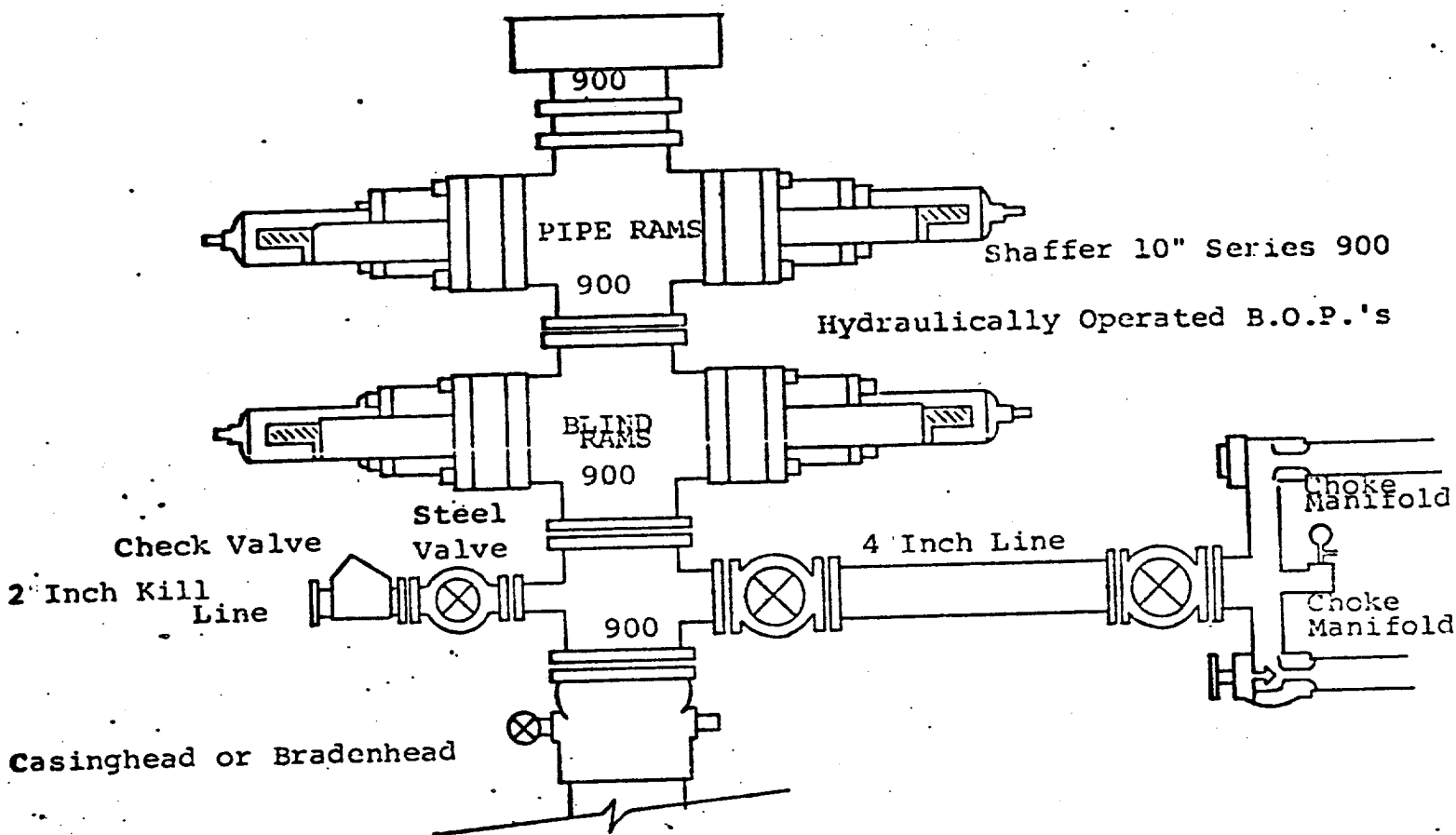
Aug. 14, 1979

Registered Professional Engineer and/or Land Surveyor

Dan R. Reddy
Certificate No. **8**

NMPE&LS # 5412





THE FOLLOWING CONSTITUTE MINIMUM BLOWOUT PREVENTER REQUIREMENTS.

1. All preventers to be hydraulically operated with secondary manual controls installed prior to drilling out from under casing.
2. Choke outlet to be a minimum of 4" diameter.
3. Kill line to be of all steel construction of 2" minimum diameter.
4. All connections from operating manifolds to preventers to be all steel. hole or tube a minimum of one inch in diameter.
5. The available closing pressure shall be at least 15% in excess of that required with sufficient volume to operate the B.O.P.'s.
6. All connections to and from preventer to have a pressure rating equivalent to that of the B.O.P.'s.
7. Inside blowout preventer to be available on rig floor.
8. Operating controls located a safe distance from the rig floor.
9. Hole must be kept filled on trips below intermediate casing. Operator not responsible for blowouts resulting from not keeping hole full.
10. D. P. float must be installed and used below zone of first gas intrusion.