

(MEXICO OIL CONSERVATION COMMISSION)
WELL LOCATION AND ACREAGE DEDICATION PLAT

NOV 08 1980

Form C-102
Supersedes C-128
Effective 1-1-65

All distances must be from the outer boundaries of the Section.

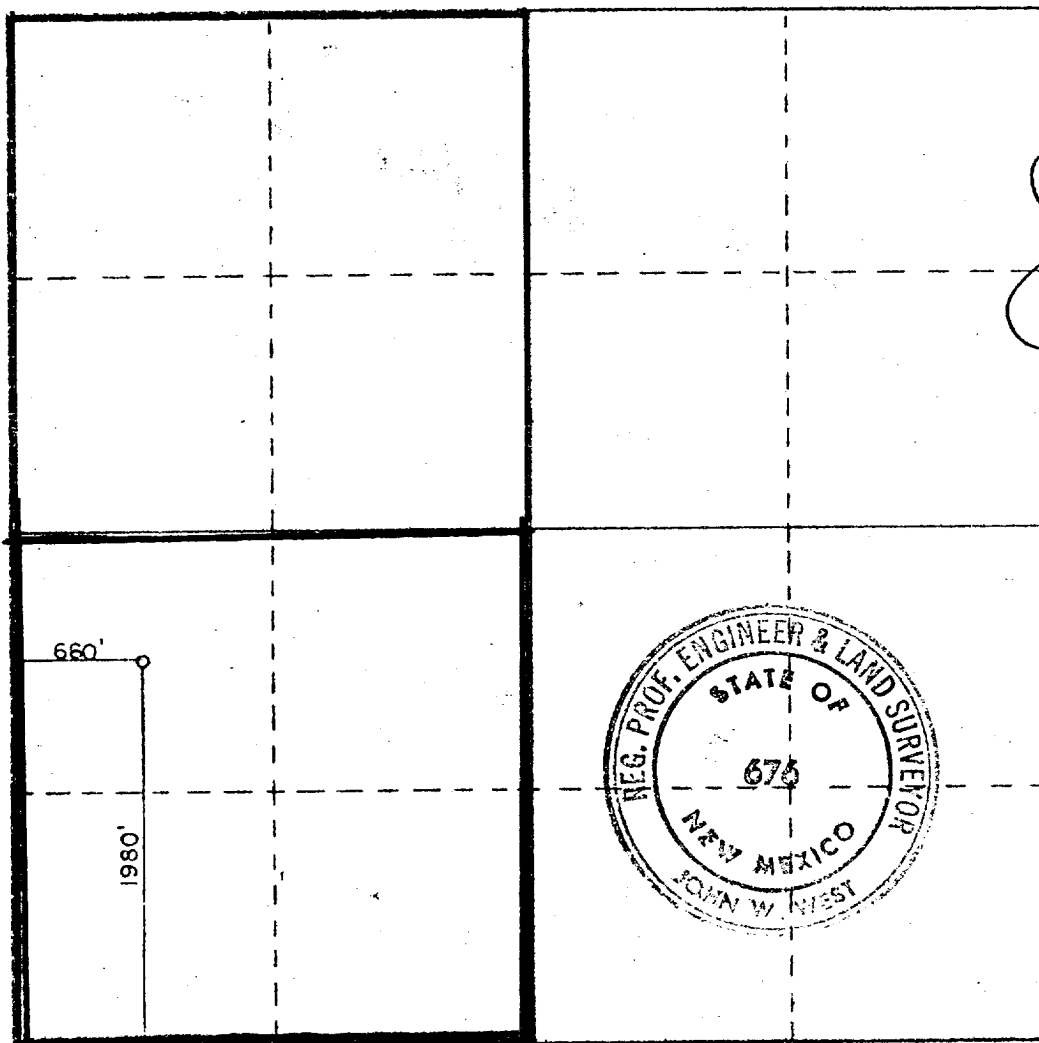
Operator McClellan Oil Co.			Lease Tres Amigos		Well No. 1
Unit Letter L	Section 9	Township 19 South	Range 23 East	County Eddy	
Actual Footage Location of Well:					
1980	feet from the South	line and	660	feet from the West	line
Ground Level Elev. 3971.4	Producing Formation Morrison	Pool Lunyan Rambabo		Dedicated Acreage: 320 / 160 Acres	

1. Outline the acreage dedicated to the subject well by colored pencil or hatchure marks on the plat below.
2. If more than one lease is dedicated to the well, outline each and identify the ownership thereof (both as to working interest and royalty).
3. If more than one lease of different ownership is dedicated to the well, have the interests of all owners been consolidated by communitization, unitization, force-pooling, etc?

☐ Yes ☐ No If answer is "yes," type of consolidation _____

If answer is "no," list the owners and tract descriptions which have actually been consolidated. (Use reverse side of this form if necessary.) _____

No allowable will be assigned to the well until all interests have been consolidated (by communitization, unitization, forced-pooling, or otherwise) or until a non-standard unit, eliminating such interests, has been approved by the Commission.



CERTIFICATION

I hereby certify that the information contained herein is true and complete to the best of my knowledge and belief.

Name
Jack L. McClellan
Position
President

Company
McClellan Oil Corporation

Date
October 25, 1979

I hereby certify that the well location shown on this plat was plotted from field notes of actual surveys made by me or under my supervision, and that the same is true and correct to the best of my knowledge and belief.

Date Surveyed
October 19, 1979

Registered Professional Engineer and/or Land Surveyor

John W. West
Certificate No. **John W. West** 676