

NO. OF COPIES RECEIVED		
DISTRIBUTION		
SANTA FE	1	
FILE	1	✓
U.S.G.S.	2	
LAND OFFICE	1	
OPERATOR	1	

NEW MEXICO OIL CONSERVATION COMMISSION
RECEIVED

JAN 15 1980

O. C. D.

30-015-23127
Form C-101
Revised 1-1-65

5A. Indicate Type of Lease
STATE ☒ FEE ☐

5. State Oil & Gas Lease No.
L-#4053

APPLICATION FOR PERMIT TO DRILL, DEEPEN, OR PLUG BACK

1a. Type of Work b. Type of Well OIL WELL <input checked="" type="checkbox"/> GAS WELL <input type="checkbox"/> OTHER <input type="checkbox"/> DRILL <input checked="" type="checkbox"/> DEEPEN <input type="checkbox"/> PLUG BACK <input type="checkbox"/> SINGLE ZONE <input type="checkbox"/> MULTIPLE ZONE <input type="checkbox"/>			7. Unit Agreement Name
2. Name of Operator Collier & Collier ✓			8. Farm or Lease Name Yalty
3. Address of Operator P.O. Box 798, Artesia, New Mexico 88210			9. Well No. #1
4. Location of Well UNIT LETTER I LOCATED 1650 FEET FROM THE South LINE AND 330 FEET FROM THE East LINE OF SEC. 23 TWP. 19S RGE. 27E NMPM			10. Field and Pool, or Wildcat Wildcat <i>Yalty</i>
11. Proposed Depth 2200'			12. County Eddy
19A. Formation Grayburg			20. Rotary or C.T. Cable Tool
21. Elevations (Show whether DE, RL, etc.) 3480.0 GL	21A. Kind & Status Plug. Bond Statewide	21B. Drilling Contractor Hammond Brothers	22. Approx. Date Work will start January 17, 1980

23.

PROPOSED CASING AND CEMENT PROGRAM

SIZE OF HOLE	SIZE OF CASING	WEIGHT PER FOOT	SETTING DEPTH	SACKS OF CEMENT	EST. TOP
10 3/4"	8 5/8"	24#	*175' 275'	125 Sxs.	Surface
7"	4 1/2"	9 1/2#	2200'	250 Sxs.	Surface

January 17, 1980

Plan to spud Wildcat well on January 17, 1980. Will run 175' of 8 5/8" casing and cement to surface with 125 Sxs. class C cement. Will then run 2200' of 4 1/2# casing and cement to surface with 250 Sxs. Class C cement.

APPROVAL VALID
FOR 90 DAYS UNLESS
DRILLING COMMENCED,

EXPIRES 4-16-80

IN ABOVE SPACE DESCRIBE PROPOSED PROGRAM; IF PROPOSAL IS TO DEEPEN OR PLUG BACK, GIVE DATA ON PRESENT PRODUCTIVE ZONE AND PROPOSED NEW PRODUCTIVE ZONE. GIVE BLOWOUT PREVENTER PROGRAM, IF ANY.

I hereby certify that the information above is true and complete to the best of my knowledge and belief.

Signed G. Leri Mark Title Secretary Date January 15, 1980
(This space for State Use)

APPROVED BY W. A. Gressett TITLE SUPERVISOR, DISTRICT II DATE JAN 16 1980

CONDITIONS OF APPROVAL, IF ANY:

* as noted above

Cement must be circulated to
surface behind 8 5/8" casing

Notify N.M.O.C.C. in sufficient
time to witness cementing
the 8 5/8" casing

NEW MEXICO OIL CONSERVATION COMMISSION
WELL LOCATION AND ACREAGE DEDICATION PLAT

Form C-102
Supersedes C-128
Effective 1-1-65

All distances must be from the outer boundaries of the Section.

Operator Collier Energy Inc. & Collier			Lease Yalty		Well No. 1
Unit Letter I	Section 23	Township 19 South	Range 27 East	County Eddy	
Actual Footage Location of Well:					
1650 feet from the South line and		330 feet from the East line			
Ground Level Elev. 3480	Underlying Formation Grayburg	Pool Wildcat	Dedicated Acreage 40		

1. Outline the acreage dedicated to the subject well by colored pencil or **RECEIVED** on the plat below.
2. If more than one lease is dedicated to the well, outline each and identify the ownership thereof (both as to working interest and royalty).
3. If more than one lease of different ownership is dedicated to the well, have the interests of all owners been consolidated by communitization, unitization, force-pooling, etc?

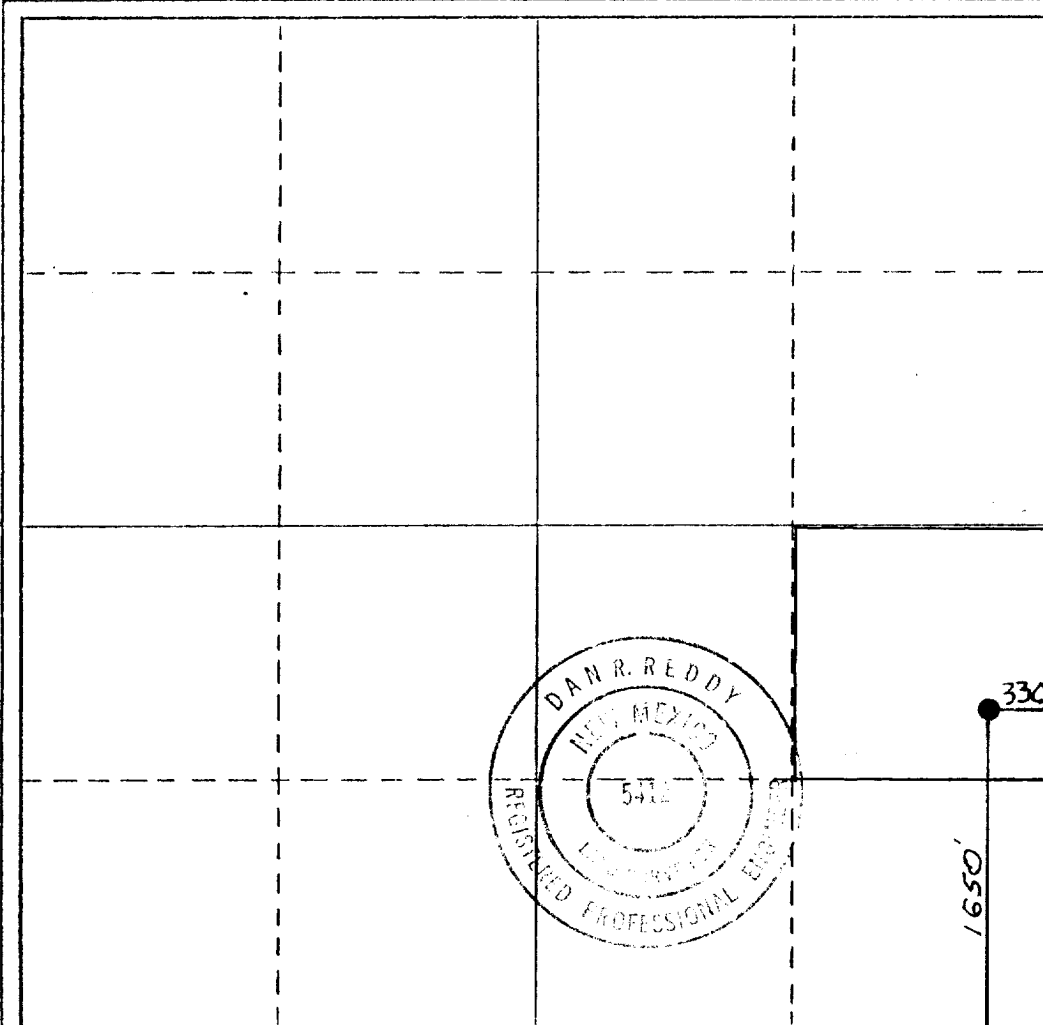
JAN 15 1980

O. C. D.
ARTESIA, OFFICE

☐ Yes ☐ No If answer is "yes," type of consolidation _____

If answer is "no," list the owners and tract descriptions which have actually been consolidated. (Use reverse side of this form if necessary.) _____

No allowable will be assigned to the well until all interests have been consolidated (by communitization, unitization, forced-pooling, or otherwise) or until a non-standard unit, eliminating such interests, has been approved by the Commission.



CERTIFICATION

I hereby certify that the information contained herein is true and complete to the best of my knowledge and belief.

Cheri Monk

Name

Cheri Monk

Position

Secretary

Company

Collier & Collier
January 15, 1980

Date

I hereby certify that the well location shown on this plot was plotted from field notes of actual surveys made by me or under my supervision, and that the same is true and correct to the best of my knowledge and belief.

Date Surveyed

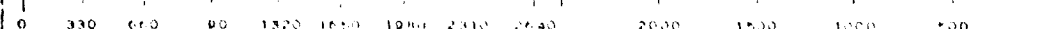
1/15/80

Registered Professional Engineer and/or Land Surveyor

Dan R. Reddy

Certificate No.

NMPE&LS #5412





LTR



Job separation sheet



STATE OF NEW MEXICO
ENERGY AND MINERALS DEPARTMENT
OIL CONSERVATION DIVISION

August 18, 1980

BRUCE KING
GOVERNOR
LARRY KEHOE
SECRETARY

RECEIVED

POST OFFICE BOX 2088
STATE LAND OFFICE BUILDING
SANTA FE, NEW MEXICO 87501
(505) 827-2434

AUG 22 1980

O. C. D.
ARTESIA, OFFICE

Collier Energy, Inc.
P. O. Box 798
Artesia, New Mexico 88210

Attention: Ms. Cheri Monk

Administrative Order NSP-1207

Gentlemen:

Reference is made to your application for a 40-acre non-standard proration unit consisting of the following acreage in a Wildcat Queen Gas Pool:

EDDY COUNTY, NEW MEXICO
TOWNSHIP 19 SOUTH, RANGE 27 EAST, NMPM
Section 23: NE/4 SE/4

It is my understanding that this unit is to be dedicated to your Yalty Well No. 1 located 1650 feet from the South line and 330 feet from the East line of said Section 23.

By authority granted me under the provisions of Rule 104 D II, the above non-standard proration unit is hereby approved.

Sincerely,

JOE D. RAMEY,
Director

JDR/RLS/dr

cc: Oil Conservation Division - Artesia
Oil & Gas Engineering Committee - Hobbs
Oil & Gas Division - State Land Office - Santa Fe