

JAN 7 1982

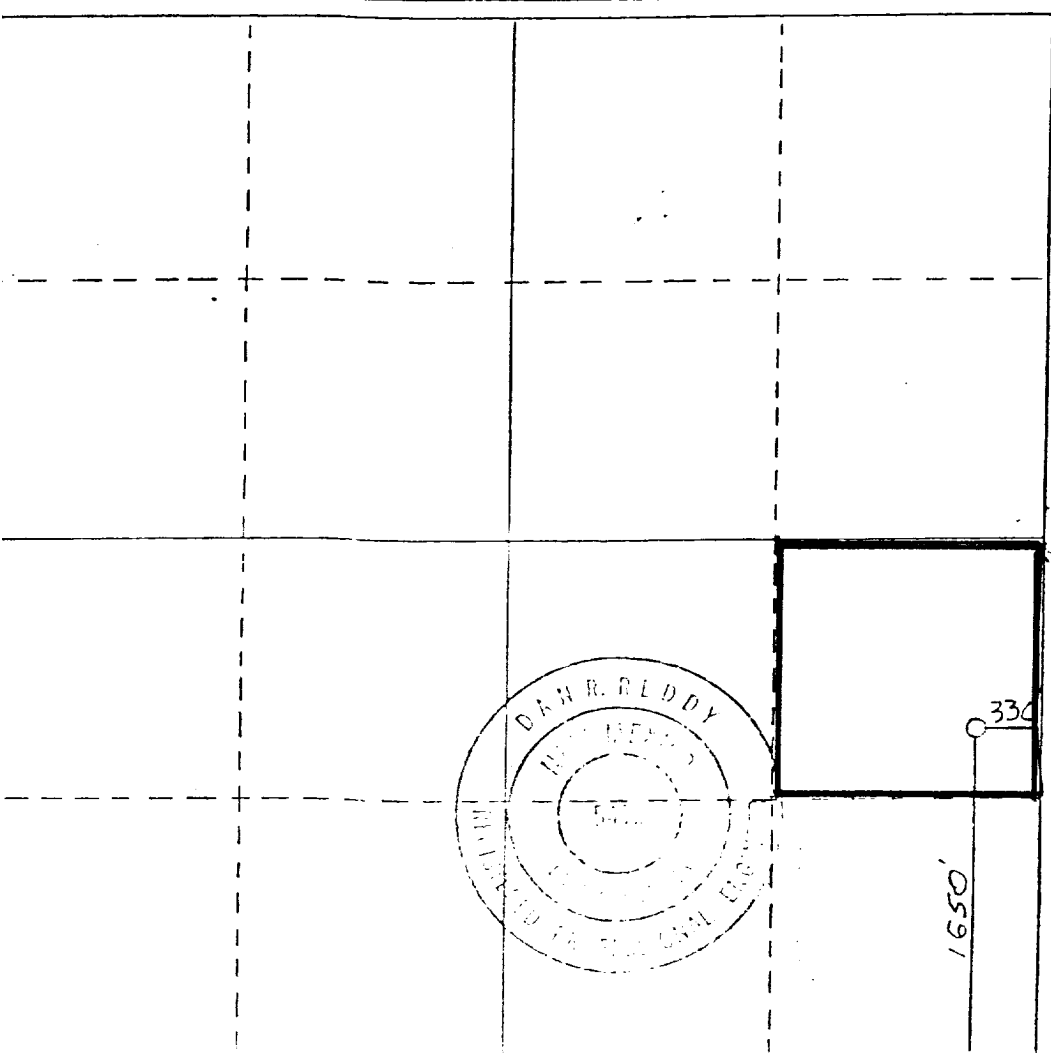
Collier Energy, Inc.		Yalty		O. C. D.		1
Range		County		ARTESIA, OFFICE		
I	23	19 South	27 East	Eddy		
1650 feet from the		South	line and	330 feet from the	East	line
3480		Queen	Pool Wilbra -Und. Queen	Dedicated Acreage		40

1. Outline the acreage dedicated to the subject well by colored pencil or hatchure marks on the plat below.
2. If more than one lease is dedicated to the well, outline each and identify the ownership thereof (both as to working interest and royalty).
3. If more than one lease of different ownership is dedicated to the well, have the interests of all owners been consolidated by communitization, unitization, force-pooling, etc?

☐ Yes ☐ No If answer is "yes," type of consolidation _____

If answer is "no," list the owners and tract descriptions which have actually been consolidated. (Use reverse side of this form if necessary.) _____

No allowable will be assigned to the well until all interests have been consolidated (by communitization, unitization, forced-pooling, or otherwise) or until a non-standard unit, eliminating such interests, has been approved by the Commission.



CERTIFICATION

I hereby certify that the information contained herein is true and complete to the best of my knowledge and belief.

Donald R. Craig

Name

Donald R. Craig

Position

President

Company

Collier Energy, Inc.

Date

January 7, 1982

I hereby certify that the well location shown on this plat was plotted from field notes of actual surveys made by me or under my supervision, and that the same is true and correct to the best of my knowledge and belief.

Date Surveyed

1/15/80

Registered Professional Engineer and/or Land Surveyor

Dan R. Reddy

Certificate No.

NMPE&LS #54129