

NO. OF COPIES RECEIVED	
DISTRIBUTION	
SANTA FE	1
FILE	1
U.S.G.S.	2
LAND OFFICE	
OPERATOR	1

NEW MEXICO OIL CONSERVATION COMMISSION

30-015-23204

Form C-101
Revised 1-1-65

5A. Indicate Type of Lease STATE <input type="checkbox"/> FEE <input checked="" type="checkbox"/>
5. State Oil & Gas Lease No.
7. Unit Agreement Name
8. Farm or Lease Name Rushing "NJ"
9. Well No. 1
10. Field and Pool, or Wildcat Penasco Draw Yeso
12. County Eddy
19. Proposed Depth 3000'
19A. Formation Yeso
20. Rotary or C.T. Rotary
21. Elevations (Show whether DF, RT, etc.) 3596 GL
21A. Kind & Status Plug. Bond Blanket
21B. Drilling Contractor LaRue Drilling Co.
22. Approx. Date Work will start ASAP

APPLICATION FOR PERMIT TO DRILL, DEEPEN, OR PLUG BACK

1a. Type of Work DRILL <input checked="" type="checkbox"/> DEEPEN <input type="checkbox"/> PLUG BACK <input type="checkbox"/>
b. Type of Well OIL WELL <input checked="" type="checkbox"/> GAS WELL <input type="checkbox"/> OTHER <input type="checkbox"/> SINGLE ZONE <input type="checkbox"/> MULTIPLE ZONE <input type="checkbox"/>
2. Name of Operator Yates Petroleum Corporation
3. Address of Operator 207 S. 4th Street, Artesia, New Mexico 88210
4. Location of Well UNIT LETTER O LOCATED 330' FBET FROM THE South LINE AND 1650' FEET FROM THE East LINE OF SEC. 6 TWP. 19S RGE. 25E NMPM
21. Elevations (Show whether DF, RT, etc.) 3596 GL
21A. Kind & Status Plug. Bond Blanket
21B. Drilling Contractor LaRue Drilling Co.
22. Approx. Date Work will start ASAP

23.

PROPOSED CASING AND CEMENT PROGRAM

SIZE OF HOLE	SIZE OF CASING	WEIGHT PER FOOT	SETTING DEPTH	SACKS OF CEMENT	EST. TOP
15"	10 3/4"	32.75	approx 320'	275	circulate
9 5/8"	7"	20#	approx 1000'	500	circulate
6 1/4"	4 1/2"	9.5	approx 3000'	200	circulate

Propose to drill a Yeso test well. Approximately 320' of surface casing will be set to shut off gravel and caving, and intermediate casing will be set 100' below the Artesian Water Zone. A 4 1/2" production string will be run to TD and all strings circulated. Well will be perforated and stimulated for production.

MUD PROGRAM: F.W. get and LCM to 1000', fresh water to TD.

BOP PROGRAM: BOP's will be installed on the 7" casing and tested, pipe rams daily blind rams on trips.

APPROVAL VAND
FOR 90 DAYS UNLESS
DRILLING COMMENCED,

EXPIRES 6-3-80

IN ABOVE SPACE DESCRIBE PROPOSED PROGRAM: IF PROPOSAL IS TO DEEPEN OR PLUG BACK, GIVE DATA ON PRESENT PRODUCTIVE ZONE AND PROPOSED NEW PRODUCTIVE ZONE. GIVE BLOWOUT PREVENTER PROGRAM, IF ANY.

I hereby certify that the information above is true and complete to the best of my knowledge and belief.

Signed Blasencio Rodriguez Title Geographer Date February 25, 1980

(This space for State Use)

APPROVED BY W.A. Gussert TITLE SUPERVISOR, DISTRICT II DATE March 1, 1980

CONDITIONS OF APPROVAL, IF ANY:

Notify N.M.O.C.C. in sufficient
time to witness cementing
the 7" casing

NEW MEXICO OIL CONSERVATION COMMISSION
WELL LOCATION AND ACREAGE DEDICATION PLAT

Form C-102
Supersedes C-128
Effective 1-1-65

All distances must be from the outer boundaries of the Section.

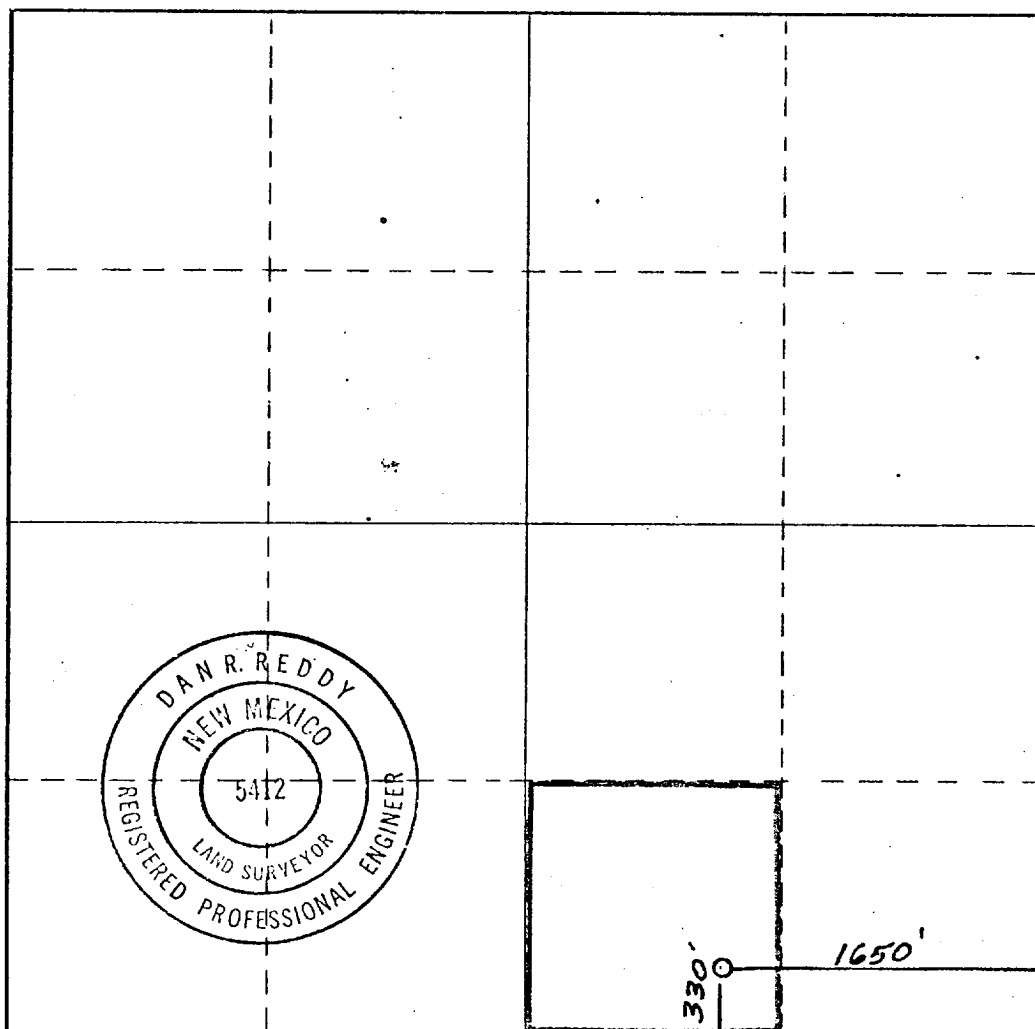
Operator YATES PETROLEUM CORPORATION			Lease Rushing NJ		Well No. 1
Unit Letter O	Section 6	Township 19 South	Range 25 East	County Eddy	
Actual Footage Location of Well: 1650 feet from the East line and 330 feet from the South line					
Ground Level Elev. 3596.0	Producing Formation YESO	Pool PENASCO DRAW (YESO - SA)		Dedicated Acreage: 40 Acres	

- Outline the acreage dedicated to the subject well by colored pencil or hachure marks on the plat below.
 - If more than one lease is dedicated to the well, outline each and identify the ownership thereof (both as to working interest and royalty).
 - If more than one lease of different ownership is dedicated to the well, have the interests of all owners been consolidated by communitization, unitization, force-pooling, etc?

RECEIVED
FEB 26 1980
ARTESIA, OFFICE
- ☐ Yes ☐ No If answer is "yes," type of consolidation _____

If answer is "no," list the owners and tract descriptions which have actually been consolidated. (Use reverse side of this form if necessary.) _____

No allowable will be assigned to the well until all interests have been consolidated (by communitization, unitization, forced-pooling, or otherwise) or until a non-standard unit, eliminating such interests, has been approved by the Commission.



CERTIFICATION

I hereby certify that the information contained herein is true and complete to the best of my knowledge and belief.

Gliseria Rodriguez

Name

GLISERIA RODRIGUEZ

Position

GEOGRAPHER

Company

YATES PETROLEUM CORP

Date

2-25-80

I hereby certify that the well location shown on this plat was plotted from field notes of actual surveys made by me or under my supervision, and that the same is true and correct to the best of my knowledge and belief.

Date Surveyed

Feb. 21, 1980

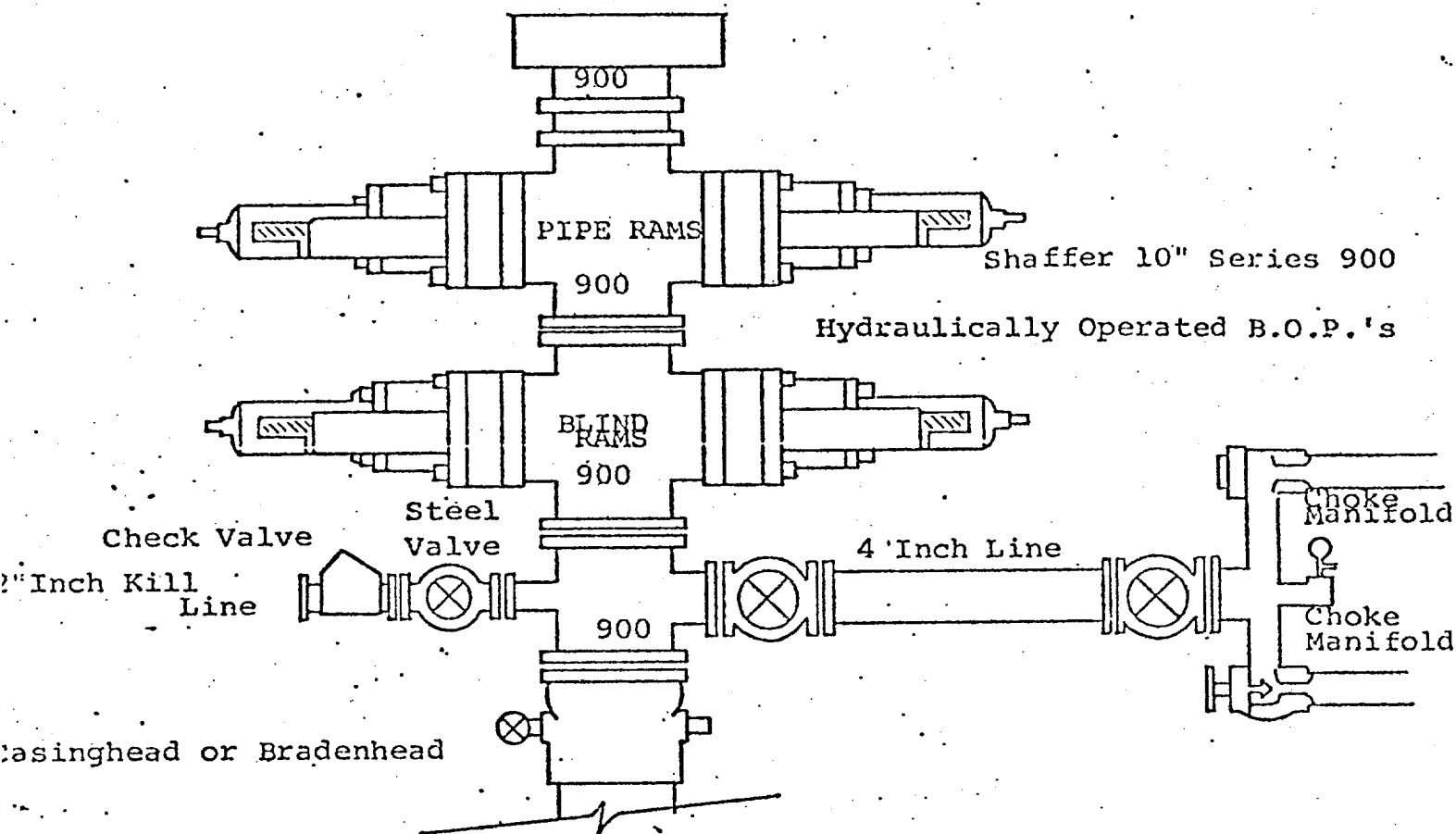
Registered Professional Engineer and/or Land Surveyor

Dan R. Reddy

Certificate No.

NM PE&LS #5412

0 330 660 990 1320 1650 1980 2310 2640 2970 3300 3630 3960 4290 4620 4950 5280 5610 5940 6270 6600



THE FOLLOWING CONSTITUTE MINIMUM BLOWOUT PREVENTER REQUIREMENTS

1. All preventers to be hydraulically operated with secondary manual controls installed prior to drilling out from under casing.
2. Choke outlet to be a minimum of 4" diameter.
3. Kill line to be of all steel construction of 2" minimum diameter.
4. All connections from operating manifolds to preventers to be all steel. hole or tube a minimum of one inch in diameter.
5. The available closing pressure shall be at least 15% in excess of that required with sufficient volume to operate the B.O.P.'s.
6. All connections to and from preventer to have a pressure rating equivalent to that of the B.O.P.'s.
7. Inside blowout preventer to be available on rig floor.
8. Operating controls located a safe distance from the rig floor.
9. Hole must be kept filled on trips below intermediate casing. Operator not responsible for blowouts resulting from not keeping hole full.
10. D. P. float must be installed and used below zone of first gas intrusion.