

30-015-23256
Form C-101
Revised 1-1-65

NEW MEXICO OIL CONSERVATION COMMISSION

Amended Location
RECEIVED

LOCATION MOVED

APR 29 1980

APPLICATION FOR PERMIT TO DRILL, DEEPEN, OR PLUG BACK

5A. In Hole Type of Lease

STATE ☐ FEE ☒

5. State Oil & Gas Lease No.

L-6287

7. Unit Agreement Name

8. Name of Lease N-type

Irish Hills-Yeso JE State

9. Well No.

2

10. Field and Pool, or VSA-
Penasco Draw (Yeso)

11. County

Eddy

12. Proposed Depth

3000'

13A. Formation

Yeso

13. Rotary or C.T.

Rotary

21. Elevation (Show whether DT, RT, etc.)

3594 GL

21A. Kind & Status Plug. Bond

Blanket

21B. Drilling Contractor

Cactus Drilling

22. Approx. Date Work will start

ASAP

23.

PROPOSED CASING AND CEMENT PROGRAM

SIZE OF HOLE	SIZE OF CASING	WEIGHT PER FOOT	SETTING DEPTH	SACKS OF CEMENT	EST. TOP
24"	20"	Conductor	30 Ft.	Reddy Mix	Circulated
15"	10 3/4"	32.75#	approx. 400	275	Circulated
9 5/8"	7"	20#	approx. 925	500	circulated
6 1/4"	4 1/2"	9.5#	approx. 3000	200	circulated

Propose to drill a Yeso test well. Approximately 400' of surface casing will be set to shut off gravel and caving, and intermediate casing will be set 100' below the Artesian Water Zone. A 4 1/2" production string will be run to TD and all string circulated. Well will be perforated and stimulated for production.

MUD PROGRAM: FW gel and LCM to 925', fresh water to TD.

BOP PROGRAM: BOP's will be installed on the 7" casing and tested, pipe rams daily blind rams on trips.

APPROVAL VALID
FOR 90 DAYS UNLESS
DRILLING COMMENCED,

EXPIRES 7-30-80

IN ABOVE SPACE DESCRIBE PROPOSED PROGRAM; IF PROPOSAL IS TO DEEPEN OR PLUG BACK, GIVE DATA ON PRESENT PRODUCTIVE ZONE AND PROPOSED NEW PRODUCTIVE ZONE. GIVE BLOWOUT PREVENTER PROGRAM, IF ANY.

I hereby certify that the information above is true and complete to the best of my knowledge and belief.

Signed Alfredo Rodriguez Title Geographer Date 4/28/80

(This space for State Use)

SUPERVISOR, DISTRICT II

APR 30 1980

APPROVED BY W.A. Gussert TITLE

DATE

CONDITIONS OF APPROVAL, IF ANY:

Cement must be circulated to
surface behind all casing

Not to be less than 10 minutes
time to witness cementing

on 7" casing

NEW MEXICO OIL CONSERVATION COMMISSION
WELL LOCATION AND ACREAGE DEDICATION PLAT

Form C-102
Supersedes C-128
Effective 1-1-65

All distances must be from the outer boundaries of the Section.

Operator Yates Petroleum Corporation			Lease Irish Hills-Yeso JE State			Well No. 2		
Unit Letter F	Section 12	Township 19S	Range 24E	County Eddy				
Actual Footage Location of Well: 2210 feet from the North line and 2310 feet from the West line								
Ground Level Elev. 3594	Producing Formation Yeso		Pool Penasco Draw (SA-Yeso Assoc.)			Dedicated Acreage: 40 Acres		

1. Outline the acreage dedicated to the subject well by colored pencil or hachure marks on the plat below.
2. If more than one lease is dedicated to the well, outline each and identify the ownership thereof (both as to working interest and royalty).
3. If more than one lease of different ownership is dedicated to the well, have the interests of all owners been consolidated by communitization, unitization, force-pooling, etc?

RECEIVED

APR 29 1980

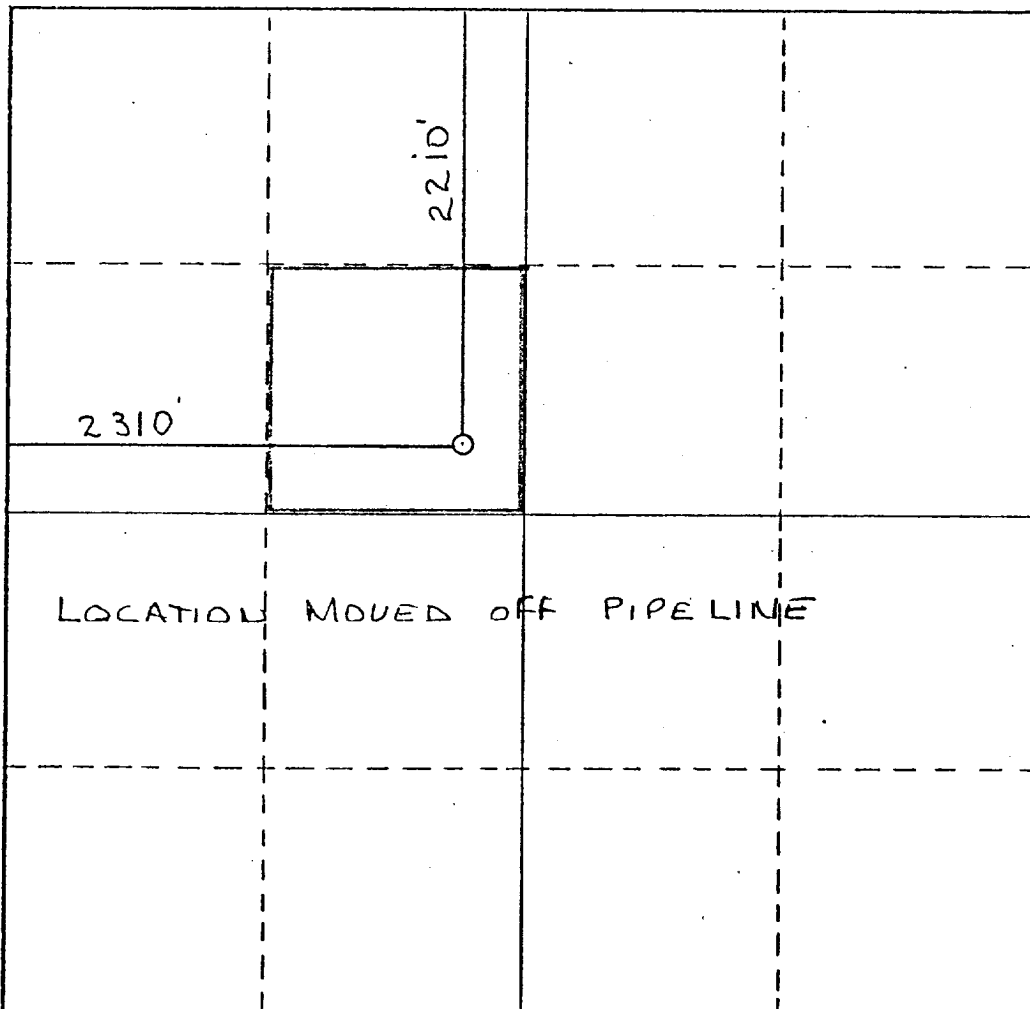
O. C. D.

ARTESIA, OFFICE

☐ Yes ☐ No If answer is "yes," type of consolidation _____

If answer is "no," list the owners and tract descriptions which have actually been consolidated. (Use reverse side of this form if necessary.) _____

No allowable will be assigned to the well until all interests have been consolidated (by communitization, unitization, forced-pooling, or otherwise) or until a non-standard unit, eliminating such interests, has been approved by the Commission.



CERTIFICATION

I hereby certify that the information contained herein is true and complete to the best of my knowledge and belief.

Gliserio Rodriguez

Name
Gliserio Rodriguez

Position
Geographer

Company
Yates Petroleum Corporation

Date
April 28, 1980

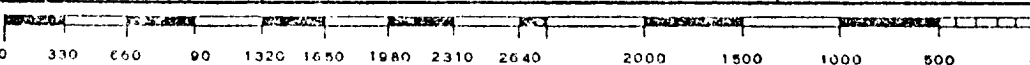
I hereby certify that the well location shown on this plat was plotted from field notes of actual surveys made by me or under my supervision, and that the same is true and correct to the best of my knowledge and belief.

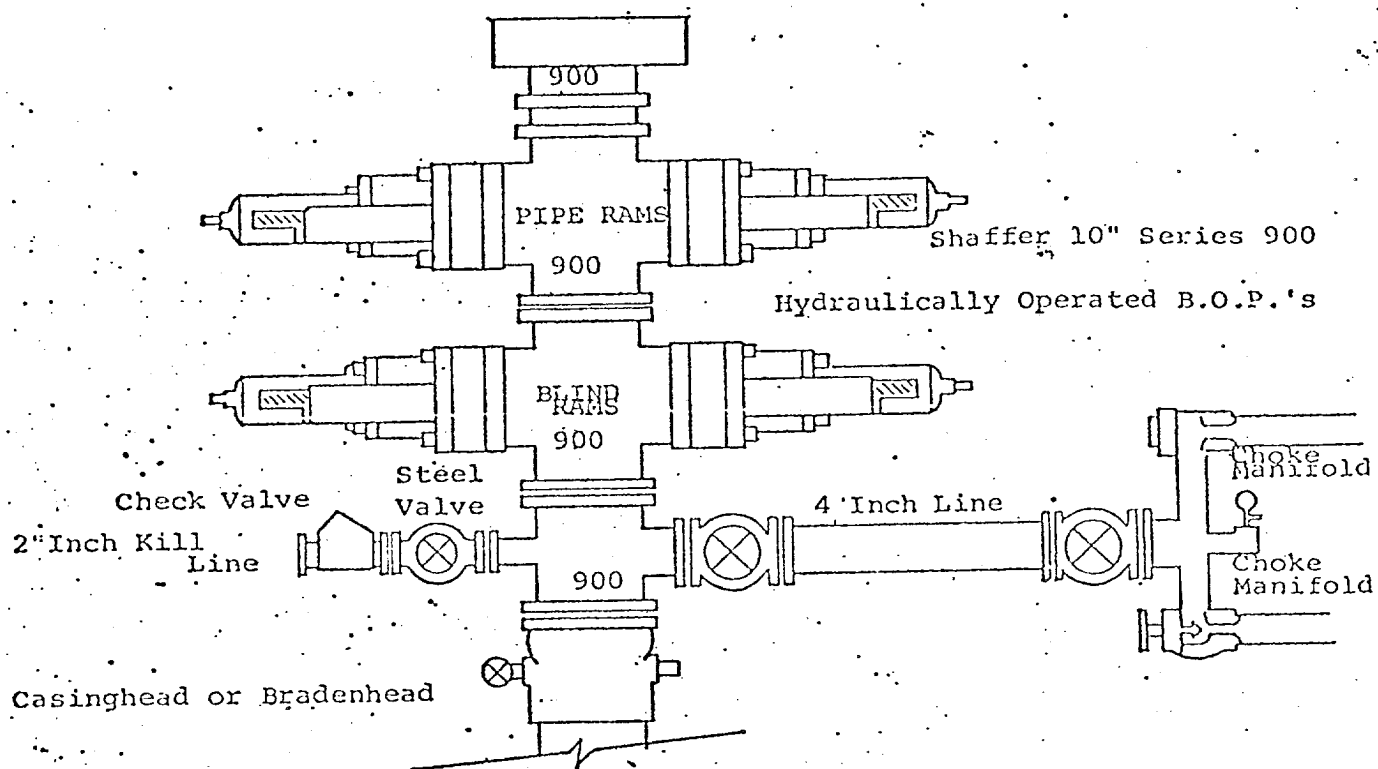
Refer to Plat dated _____

Date Surveyed
March 8, 1980

Registered Professional Engineer
and/or Land Surveyor

Certificate No. _____





THE FOLLOWING CONSTITUTE MINIMUM BLOWOUT PREVENTER REQUIREMENTS

1. All preventers to be hydraulically operated with secondary manual controls installed prior to drilling out from under casing.
2. Choke outlet to be a minimum of 4" diameter.
3. Kill line to be of all steel construction of 2" minimum diameter.
4. All connections from operating manifolds to preventers to be all steel. hole or tube a minimum of one inch in diameter.
5. The available closing pressure shall be at least 15% in excess of that required with sufficient volume to operate the B.O.P.'s.
6. All connections to and from preventer to have a pressure rating equivalent to that of the B.O.P.'s.
7. Inside blowout preventer to be available on rig floor.
8. Operating controls located a safe distance from the rig floor.
9. Hole must be kept filled on trips below intermediate casing. Operator not responsible for blowouts resulting from not keeping hole full.
10. D. P. float must be installed and used below zone of first gas intrusion.