

NO. OF COPIES RECEIVED	
DISTRIBUTION	
SANTA FE	1
FILE	1
U.S.G.S.	2
LAND OFFICE	
OPERATOR	1

NEW MEXICO OIL CONSERVATION **RECEIVED**

MAR 26 1980

O. C. D.
ARTESIA, OFFICE

30-015-23259
Form C-101
Revised 1-1-65

5A. Indicate Type of Lease STATE <input type="checkbox"/> FEE <input checked="" type="checkbox"/>
5. State Oil & Gas Lease No. L-6287
7. Unit Agreement Name
8. Farm or Lease Name Irish Hills-Yeso JE State
9. Well No. #5
10. Field and Pool, or Wildcat SA (Yeso S-1) (Yeso S-2) (Yeso S-3) (Yeso S-4) (Yeso S-5) (Yeso S-6) (Yeso S-7) (Yeso S-8) (Yeso S-9) (Yeso S-10) (Yeso S-11) (Yeso S-12) (Yeso S-13) (Yeso S-14) (Yeso S-15) (Yeso S-16) (Yeso S-17) (Yeso S-18) (Yeso S-19) (Yeso S-20) (Yeso S-21) (Yeso S-22) (Yeso S-23) (Yeso S-24) (Yeso S-25) (Yeso S-26) (Yeso S-27) (Yeso S-28) (Yeso S-29) (Yeso S-30) (Yeso S-31) (Yeso S-32) (Yeso S-33) (Yeso S-34) (Yeso S-35) (Yeso S-36) (Yeso S-37) (Yeso S-38) (Yeso S-39) (Yeso S-40) (Yeso S-41) (Yeso S-42) (Yeso S-43) (Yeso S-44) (Yeso S-45) (Yeso S-46) (Yeso S-47) (Yeso S-48) (Yeso S-49) (Yeso S-50) (Yeso S-51) (Yeso S-52) (Yeso S-53) (Yeso S-54) (Yeso S-55) (Yeso S-56) (Yeso S-57) (Yeso S-58) (Yeso S-59) (Yeso S-60) (Yeso S-61) (Yeso S-62) (Yeso S-63) (Yeso S-64) (Yeso S-65) (Yeso S-66) (Yeso S-67) (Yeso S-68) (Yeso S-69) (Yeso S-70) (Yeso S-71) (Yeso S-72) (Yeso S-73) (Yeso S-74) (Yeso S-75) (Yeso S-76) (Yeso S-77) (Yeso S-78) (Yeso S-79) (Yeso S-80) (Yeso S-81) (Yeso S-82) (Yeso S-83) (Yeso S-84) (Yeso S-85) (Yeso S-86) (Yeso S-87) (Yeso S-88) (Yeso S-89) (Yeso S-90) (Yeso S-91) (Yeso S-92) (Yeso S-93) (Yeso S-94) (Yeso S-95) (Yeso S-96) (Yeso S-97) (Yeso S-98) (Yeso S-99) (Yeso S-100)
12. County Eddy
19. Proposed Depth 3000'
19A. Formation Yeso
20. Rotary or C.T. Rotary
21. Elevations (Show whether DF, RT, etc.) 3591.0 GL
21A. Kind & Status Plug. Bond Blanket
21B. Drilling Contractor Cactus Drilling
22. Approx. Date Work will start ASAP

APPLICATION FOR PERMIT TO DRILL, DEEPEN, OR PLUG BACK

1a. Type of Work
DRILL ☒ DEEPEN ☐ PLUG BACK ☐

b. Type of Well
OIL WELL ☒ GAS WELL ☐ OTHER ☐ SINGLE ZONE ☐ MULTIPLE ZONE ☐

2. Name of Operator
Yates Petroleum Corporation

3. Address of Operator
207 S. 4th Street, Artesia, New Mexico 88210

4. Location of Well
UNIT LETTER G LOCATED 2310 FEET FROM THE North LINE
AND 1650 FEET FROM THE East LINE OF SEC. 12 TWP. 19S RGE. 24E NMPM

23. PROPOSED CASING AND CEMENT PROGRAM

SIZE OF HOLE	SIZE OF CASING	WEIGHT PER FOOT	SETTING DEPTH	SACKS OF CEMENT	EST. TOP
15"	10 3/4"	32.75	approx 400	275	circulated
9 5/8"	7"	20#	approx 925	500	circulated
6 1/4"	4 1/2"	9.5	approx 3000	200	circulated

Propose to drill a Yeso test well. Approximately 400' of surface casing will be set to shut off gravel and caving, and intermediate casing will be set 100' below the Artesian Water Zone. a 4 1/2" production string will be run to TD and all string circulated. Well will be perforated and stimulated for production.

MUD PROGRAM: F.W. gel and LCM to 925, fresh water to TD.

BOP PROGRAM: BOP's will be installed on the 7" casing and tested, pipe rams daily blind rams on trips.

APPROVAL VALID
FOR 90 DAYS UNLESS
DRILLING COMMENCED
EXPIRES 6-30-80

IN ABOVE SPACE DESCRIBE PROPOSED PROGRAM: IF PROPOSAL IS TO DEEPEN OR PLUG BACK, GIVE DATA ON PRESENT PRODUCTIVE ZONE AND PROPOSED NEW PRODUCTIVE ZONE. GIVE BLOWOUT PREVENTER PROGRAM, IF ANY.

I hereby certify that the information above is true and complete to the best of my knowledge and belief.

Signed W. P. Hanson Title Drilling Foreman Date March 26, 1980

(This space for State Use)

APPROVED BY W. A. Gussitt TITLE SUPERVISOR, DISTRICT II DATE MAR 31 1980

CONDITIONS OF APPROVAL, IF ANY:

Cement must be circulated to surface behind all casing

Notify N.M.O.C.C. in sufficient time to witness cementing of 7" casing

NEW MEXICO OIL CONSERVATION COMMISSION
WELL LOCATION AND ACREAGE DEDICATION PLAT

Form C-102
Supersedes C-128
Effective 1-1-65

All distances must be from the outer boundaries of the Section.

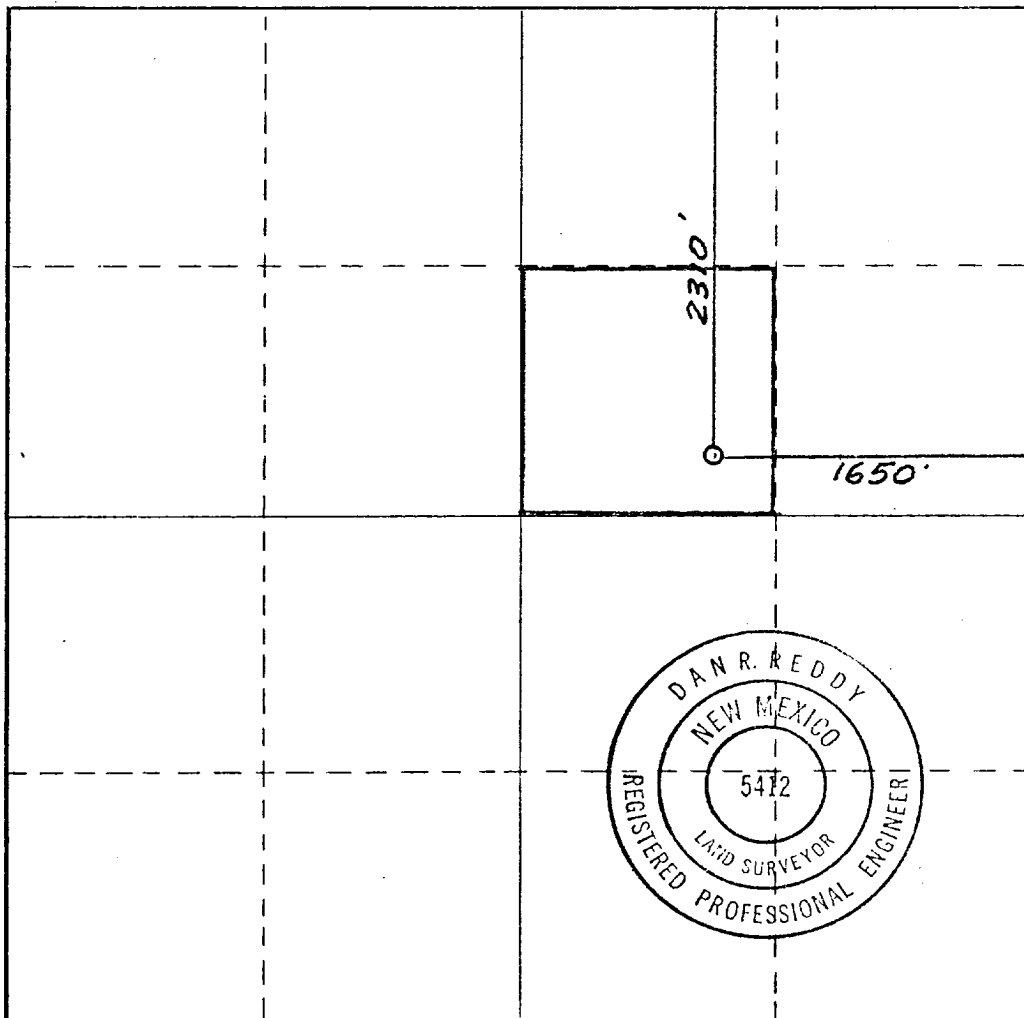
Operator YATES PETROLEUM CORPORATION			Lease Irish Hills-Yeso JE State		Well No. 5
Unit Letter G	Section 12	Township 19 South	Range 24 East	County Eddy	
Actual Footage Location of Well: 2310 feet from the North line and 1650 feet from the East line					
Ground Level Elev. 3591.0	Producing Formation Yeso		Pool Penasco Draw (SA-Yeso Assoc.)	Dedicated Acreage: 40 Acres	

1. Outline the acreage dedicated to the subject well by colored pencil or hachure marks on the plat below.
2. If more than one lease is dedicated to the well, outline each and identify the ownership thereof (both as to working interest and royalty).
3. If more than one lease of different ownership is dedicated to the well, have the interests of all owners been consolidated by communitization, unitization, force-pooling, etc?

☐ Yes ☐ No If answer is "yes," type of consolidation _____

If answer is "no," list the owners and tract descriptions which have actually been consolidated. (Use reverse side of this form if necessary.) _____

No allowable will be assigned to the well until all interests have been consolidated (by communitization, unitization, forced-pooling, or otherwise) or until a non-standard unit, eliminating such interests, has been approved by the Commission.



CERTIFICATION

I hereby certify that the information contained herein is true and complete to the best of my knowledge and belief.

Name
Gliserio Rodriguez
Position
Geographer
Company
Yates Petroleum Corp.

Date
March 12, 1980

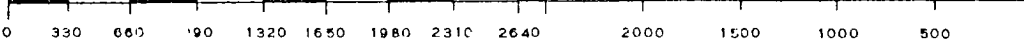
I hereby certify that the well location shown on this plat was plotted from field notes of actual surveys made by me or under my supervision, and that the same is true and correct to the best of my knowledge and belief.

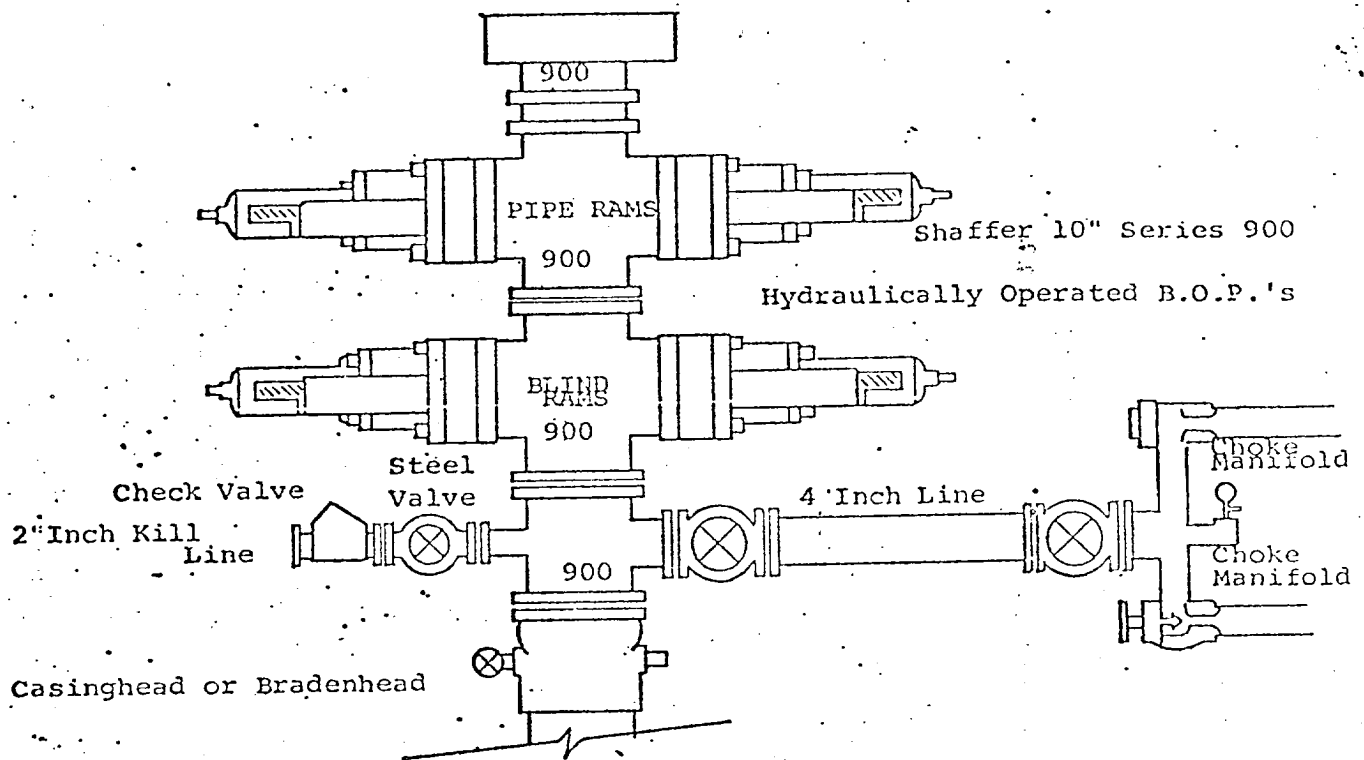
Date Surveyed
March 10, 1980

Registered Professional Engineer and/or Land Surveyor

Dan R. Reddy
Certificate No.

NM PE&LS #5412





THE FOLLOWING CONSTITUTE MINIMUM BLOWOUT PREVENTER REQUIREMENTS

1. All preventers to be hydraulically operated with secondary manual controls installed prior to drilling out from under casing.
2. Choke outlet to be a minimum of 4" diameter.
3. Kill line to be of all steel construction of 2" minimum diameter.
4. All connections from operating manifolds to preventers to be all steel. hole or tube a minimum of one inch in diameter.
5. The available closing pressure shall be at least 15% in excess of that required with sufficient volume to operate the B.O.P.'s.
6. All connections to and from preventer to have a pressure rating equivalent to that of the B.O.P.'s.
7. Inside blowout preventer to be available on rig floor.
8. Operating controls located a safe distance from the rig floor.
9. Hole must be kept filled on trips below intermediate casing. Operator not responsible for blowouts resulting from not keeping hole full.
10. D. P. float must be installed and used below zone of first gas intrusion.