

NE MEXICO OIL CONSERVATION COMMISSION
WELL LOCATION AND ACREAGE DEDICATION AT

RECEIVED

Form C-102
Supersedes C-128
Effective 1-1-75

NOV 10 1980

All distances must be from the outer boundaries of the Section

Threshold Development Company			Conoco 10 "A" State			Well No.
Section	Range	Township	Range	Township	County	1Y
F	10	19 South	29 East		Eddy	
Actual Footage Location of Well:						
1800 feet from the West line and		1980 feet from the North line				
Ground Level Elev.	Producing Formation	Pool	Dedicated Acreage:			
3378.5	Atoka	Turkey Track Atoka	320 Acres			

1. Outline the acreage dedicated to the subject well by colored pencil or hatchure marks on the plat below.

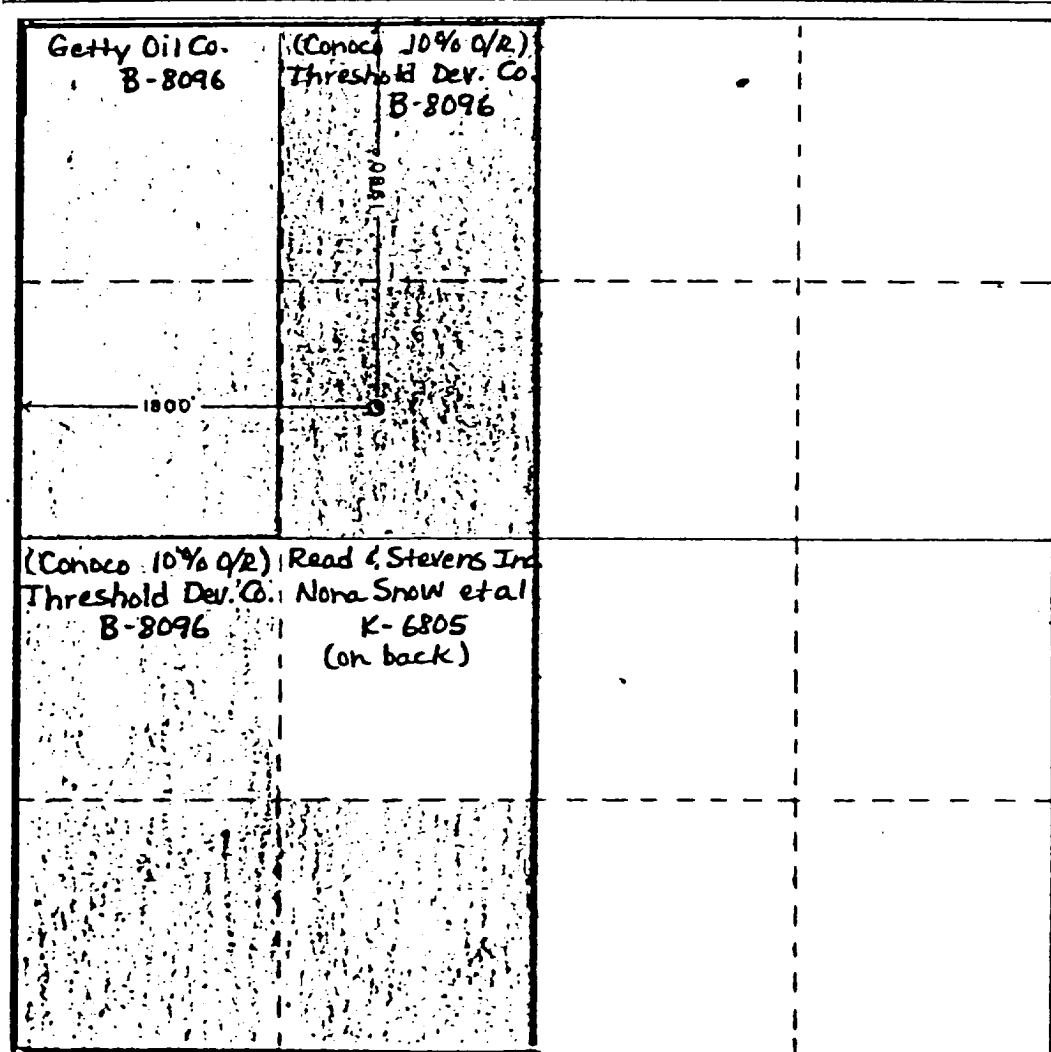
2. If more than one lease is dedicated to the well, outline each and identify the ownership thereof (both as to working interest and royalty).

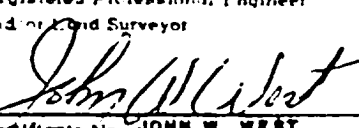
3. If more than one lease of different ownership is dedicated to the well, have the interests of all owners been consolidated by communitization, unitization, force-pooling, etc?

☒ Yes ☐ No If answer is "yes," type of consolidation letter agreement with unitization agreement to be drawn up prior to establishment of production.

If answer is "no," list the owners and tract descriptions which have actually been consolidated. (Use reverse side of this form if necessary.)

No allowable will be assigned to the well until all interests have been consolidated (by communitization, unitization, forced-pooling, or otherwise) or until a non-standard unit, eliminating such interests, has been approved by the Commission.



CERTIFICATION	
I hereby certify that the information contained herein is true and complete to the best of my knowledge and belief.	
Name	David St. Pace
Position	Exploration Manager
Company	Threshold Development Co.
Date	4/9/80
I hereby certify that the well location shown on this plat was plotted from field notes of actual surveys made by me or under my supervision, and that the same is true and correct to the best of my knowledge and belief.	
Date Surveyed	April 8, 1980
Registered Professional Engineer and Land Surveyor	
	
Certificate No.	JOHN W. WEST 676 PATRICK A. ROMERO 6868

