

| | |
|------------------------|---|
| NO. OF COPIES RECEIVED | |
| DISTRIBUTION | |
| SANTA FE | 1 |
| FILE | 1 |
| U.S.G.S. | 1 |
| LAND OFFICE | |
| OPERATOR | 1 |

NEW MEXICO OIL CONSERVATION COMMISSION

RECEIVED

30-015-23305

Form C-101
Revised 1-1-65

APR 28 1980

O. C. D.

ARTESIA, OFFICE

APPLICATION FOR PERMIT TO DRILL, DEEPEN, OR PLUG BACK

| | | | |
|--|--|--|--|
| 1a. Type of Work | | 7. Unit Agreement Name | |
| b. Type of Well DRILL <input checked="" type="checkbox"/> DEEPEN <input type="checkbox"/> PLUG BACK <input type="checkbox"/> C/O WELL <input checked="" type="checkbox"/> GAS WELL <input type="checkbox"/> OTHER <input type="checkbox"/> SINGLE ZONE <input type="checkbox"/> MULTIPLE ZONE <input type="checkbox"/> | | 8. Farm or Lease Name Routh NU | |
| 2. Name of Operator Yates Petroleum Corporation | | 9. Well No. 1 | |
| 3. Address of Operator 207 South 4th Street, Artesia, New Mexico 88210 | | 10. Field and Pool, or Willing Perforator Draw - 54' - 1/2" UNDESIGNATED | |
| 4. Location of Well UNIT LETTER A LOCATED 990 FEET FROM THE North LINE AND 330 FEET FROM THE East LINE OF SEC. 14 TWP. 19S RGE. 24E NMDM | | 12. County Eddy | |
| 19. Proposed Depth 3000' + | | 19A. Formation Yeso | |
| 21. Kind & Status Plug. Bond Blanket | | 22. Approx. Date Work will start ASAP | |
| 21A. Kind & Status Plug. Bond Blanket | | 21B. Drilling Contractor L & M Drilling | |
| 21. Elevation (Show whether DF, KI, etc.) 3625.3 GL | | 22. History of C.T. Rotary | |

23.

PROPOSED CASING AND CEMENT PROGRAM

| SIZE OF HOLE | SIZE OF CASING | WEIGHT PER FOOT | SETTING DEPTH | SACKS OF CEMENT | EST. TOP |
|--------------|----------------|-----------------|---------------|-----------------|-----------|
| 15" | 10 3/4" | 32.3# | approx. 420' | 375 sx | Circulate |
| 9 5/8" | 7" | 20# | approx. 825' | 375 sx | Circulate |
| 6 1/4" | 4 1/2" | 9.5# | approx. 3000' | 275 sx | |

We propose to drill and test the Yeso and San Andres formations. Approximately 420' of surface casing will be set to shut off gravel and caving. Intermediate casing will be set at least 100' below the Artesian Water Zone. 4 1/2" production casing will be run, perforated and possibly sand frac'd for production.

MUD PROGRAM: Fresh water gel to 825', fresh water to TD.

BOP PROGRAM: BOP's will be installed on 7" casing and tested.

APPROVAL VALID
FOR 90 DAYS UNLESS
DRILLING COMMENCED,

EXPIRES 7-30-80

IN ABOVE SPACE DESCRIBE PROPOSED PROGRAM: IF PROPOSAL IS TO DEEPEN OR PLUG BACK, GIVE DATA ON PRESENT PRODUCTIVE ZONE AND PROPOSED NEW PRODUCTIVE ZONE. GIVE BLOWOUT PREVENTER PROGRAM, IF ANY.

I hereby certify that the information above is true and complete, to the best of my knowledge and belief.

Signed Alvin B. Brown Title Geographer Date 4/28/80
(This space for State Use)

APPROVED BY W. A. Grissett TITLE SUPERVISOR, DISTRICT II DATE APR 30 1980
CONDITIONS OF APPROVAL, IF ANY:

Cement must be circulated to surface behind all casing the 7" casing

Notify N.M.O.C.C. in sufficient time to witness cementing

NE., MEXICO OIL CONSERVATION COMMISSION
WELL LOCATION AND ACREAGE DEDICATION PLAT

Form C-102
Supersedes C-128
Effective 1-1-65

All distances must be from the outer boundaries of the Section.

| | | | | |
|--|------------------------------------|--|---------------------------------------|-----------------------|
| Operator YATES PETROLEUM CORPORATION | | Lease Routh NU | | Well No. 1 |
| Unit Letter A | Section 14 | Township 19 South | Range 24 East | County Eddy |
| Actual Footage Location of Well: 990 feet from the North line and 330 feet from the East line | | | | |
| Ground Level Elev. 3625.3 | Producing Formation Yeso | Pool Perseus Draw UNDESIGNATED SA-YESO Assoc | Dedicated Acreage: 40 Acres | |

1. Outline the acreage dedicated to the subject well by colored pencil or hachure marks on the plat below.

RECEIVED

2. If more than one lease is dedicated to the well, outline each and identify the ownership thereof (both as to working interest and royalty).

APR 28 1980

3. If more than one lease of different ownership is dedicated to the well, have the interests of all owners been consolidated by communitization, unitization, force-pooling, etc?

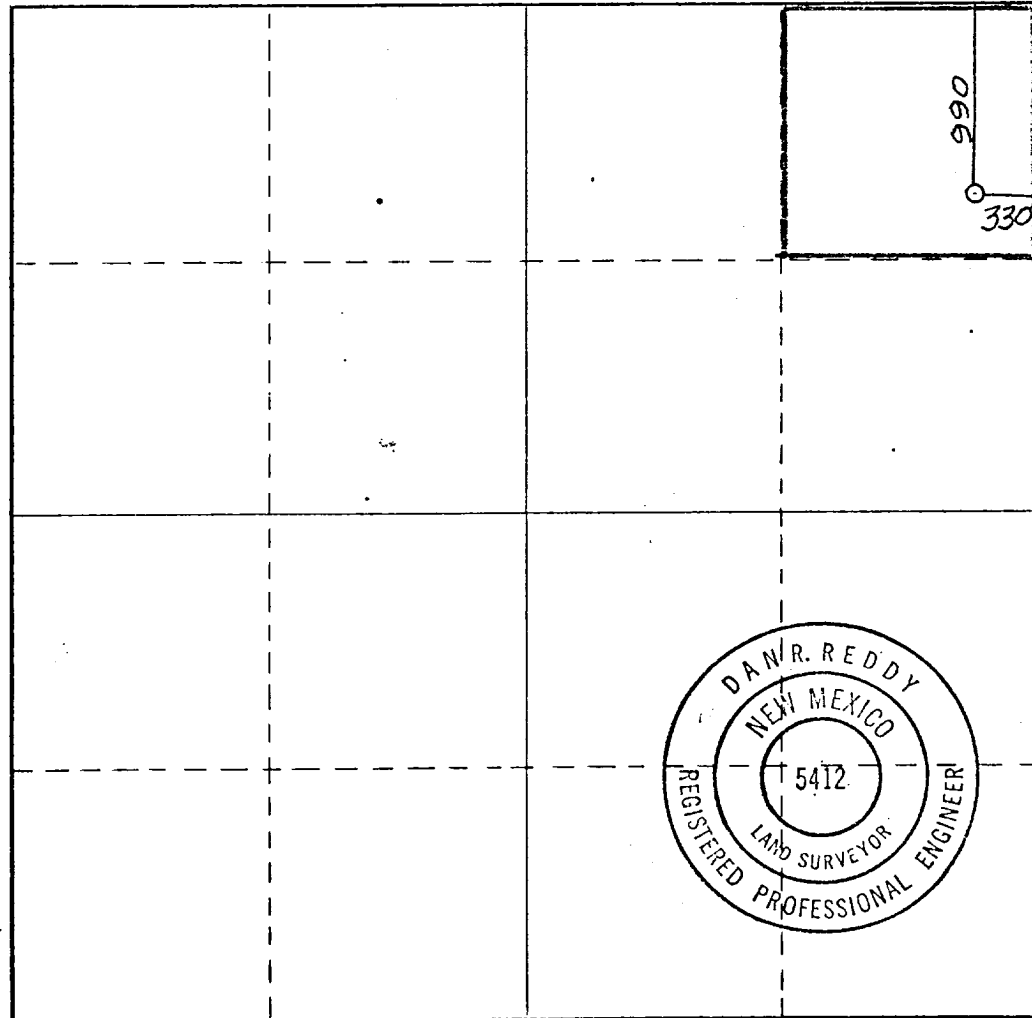
O. C. D.

ARTESIA, OFFICE

☐ Yes ☐ No If answer is "yes," type of consolidation _____

If answer is "no," list the owners and tract descriptions which have actually been consolidated. (Use reverse side of this form if necessary.) _____

No allowable will be assigned to the well until all interests have been consolidated (by communitization, unitization, forced-pooling, or otherwise) or until a non-standard unit, eliminating such interests, has been approved by the Commission.



CERTIFICATION

I hereby certify that the information contained herein is true and complete to the best of my knowledge and belief.

Gliserio Rodriguez
Name

Gliserio Rodriguez

Position

Geographer

Company

Yates Petroleum Corporation

Date

4/10/80

I hereby certify that the well location shown on this plat was plotted from field notes of actual surveys made by me or under my supervision, and that the same is true and correct to the best of my knowledge and belief.

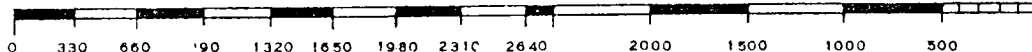
Date Surveyed

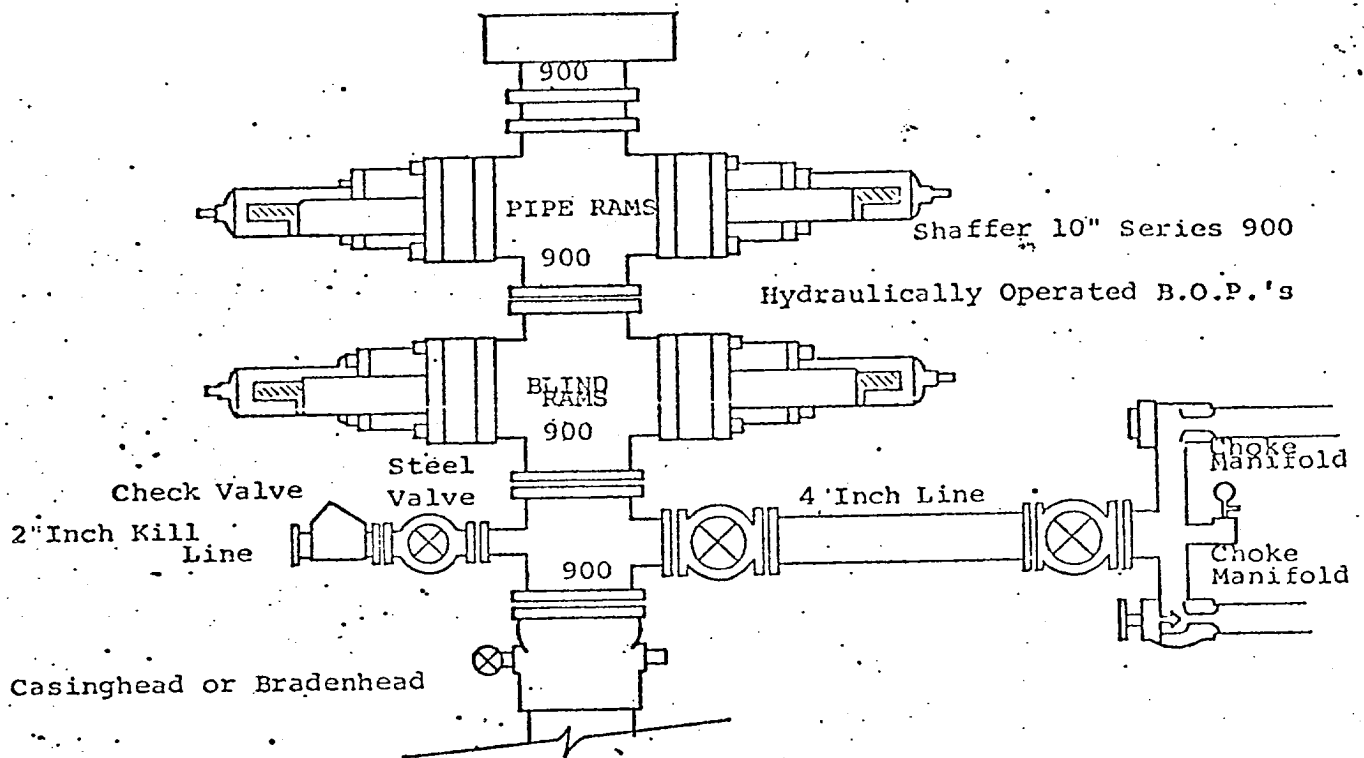
April 9, 1980

Registered Professional Engineer and/or Land Surveyor

Dan R. Reddy
Certificate No.

NM PE&LS #5412





THE FOLLOWING CONSTITUTE MINIMUM BLOWOUT PREVENTER REQUIREMENTS

1. All preventers to be hydraulically operated with secondary manual controls installed prior to drilling out from under casing.
2. Choke outlet to be a minimum of 4" diameter.
3. Kill line to be of all steel construction of 2" minimum diameter.
4. All connections from operating manifolds to preventers to be all steel. hole or tube a minimum of one inch in diameter.
5. The available closing pressure shall be at least 15% in excess of that required with sufficient volume to operate the B.O.P.'s.
6. All connections to and from preventer to have a pressure rating equivalent to that of the B.O.P.'s.
7. Inside blowout preventer to be available on rig floor.
8. Operating controls located a safe distance from the rig floor.
9. Hole must be kept filled on trips below intermediate casing. Operator not responsible for blowouts resulting from not keeping hole full.
10. D. P. float must be installed and used below zone of first gas intrusion.