

UNITED STATES  
DEPARTMENT OF THE INTERIOR  
BUREAU OF LAND MANAGEMENT

SUBMIT IN TRIPLICATE\*

(Other instructions on  
reverse side)

Form approved.  
Budget Bureau No. 1004-0136  
Expires August 31, 1985

APPLICATION FOR PERMIT TO DRILL, DEEPEN, OR PLUG BACK

1a. TYPE OF WORK

DRILL ☐

DEEPEN ☐

PLUG BACK ☒

b. TYPE OF WELL

OIL  
WELL ☐

GAS  
WELL ☒

OTHER

SINGLE  
ZONE ☒

MULTIPLE  
ZONE ☐

2. NAME OF OPERATOR

Amoco Production Company

3. ADDRESS OF OPERATOR

P. O. Box 3092, Houston, TX 77253

4. LOCATION OF WELL (Report location clearly and in accordance with any State requirements.)\*

At surface

1977' FSL x 860' FWL, Unit L

At proposed prod. zone Section 26, T-18-S, R-31-E

14. DISTANCE IN MILES AND DIRECTION FROM NEAREST TOWN OR POST OFFICE\*

10 Miles Southwest of Maljamar, NM

15. DISTANCE FROM PROPOSED\*

LOCATION TO NEAREST  
PROPERTY OR LEASE LINE, FT.  
(Also to nearest drlg. unit line, if any)

16. NO. OF ACRES IN LEASE

17. NO. OF ACRES ASSIGNED  
TO THIS WELL

160

18. DISTANCE FROM PROPOSED LOCATION\*  
TO NEAREST WELL, DRILLING, COMPLETED,  
OR APPLIED FOR, ON THIS LEASE, FT.

19. PROPOSED DEPTH

13101

20. ROTARY OR CABLE TOOLS

Rotary

21. ELEVATIONS (Show whether DF, RT, GR, etc.)

3651.8 GL

22. APPROX. DATE WORK WILL START\*

4-15-89

23.

PROPOSED CASING AND CEMENTING PROGRAM

SIZE OF HOLE	SIZE OF CASING	WEIGHT PER FOOT	SETTING DEPTH	QUANTITY OF CEMENT
20	16	65	800	900 SXS
14 3/4	10 3/4	51, 45.5, 40.5	4798	3600 SXS
9 1/2	7 5/8	26.4, 29.7	12005	2000 SXS

1. Rig up service unit and kill well with 2% KCL Water.
2. Remove tree and install blow-out preventer. Pull rods, pump, and tubing.
3. Set cast iron bridge plug at 11350 feet on wireline and cap with 35 feet of cement.
4. Load hole with 9.5-10 PPG 2% KCL Water.
5. Run correlation log and correlate to Schlumberger compensated neutron formation density log dated 10-23-80.
6. Perforate 10942 feet - 10948 feet with 4 inch casing gun at 90 degree phasing at 4 jet shots per foot.
7. Run in hole with packer and shear disk and dry tubing. Set packer at 10850 feet. Test tubing going in hole to 8000 PSI.
8. Drop bar to shear disk.
9. Swab to flow and test.
10. If well does not flow, acidize with 500 gallons 7.5% MS acid. Flush to perforations with 2% KCL Water.
11. Swab to flow. Turn to production and test.

IN ABOVE SPACE DESCRIBE PROPOSED PROGRAM: If proposal is to deepen or plug back, give data on present productive zone and proposed new productive zone. If proposal is to drill or deepen directionally, give pertinent data on subsurface locations and measured and true vertical depths. Give blowout preventer program, if any.

24.

SIGNED H. I. Black (H. I. Black)

TITLE Senior Admn. Analyst

DATE 3-30-89

(This space for Federal or State office use)

PERMIT NO.

APPROVAL DATE

APPROVED BY Harmon Shaw  
CONDITIONS OF APPROVAL, IF ANY:

TITLE

DATE

4-11-89

All distances must be from the outer boundaries of the Section.

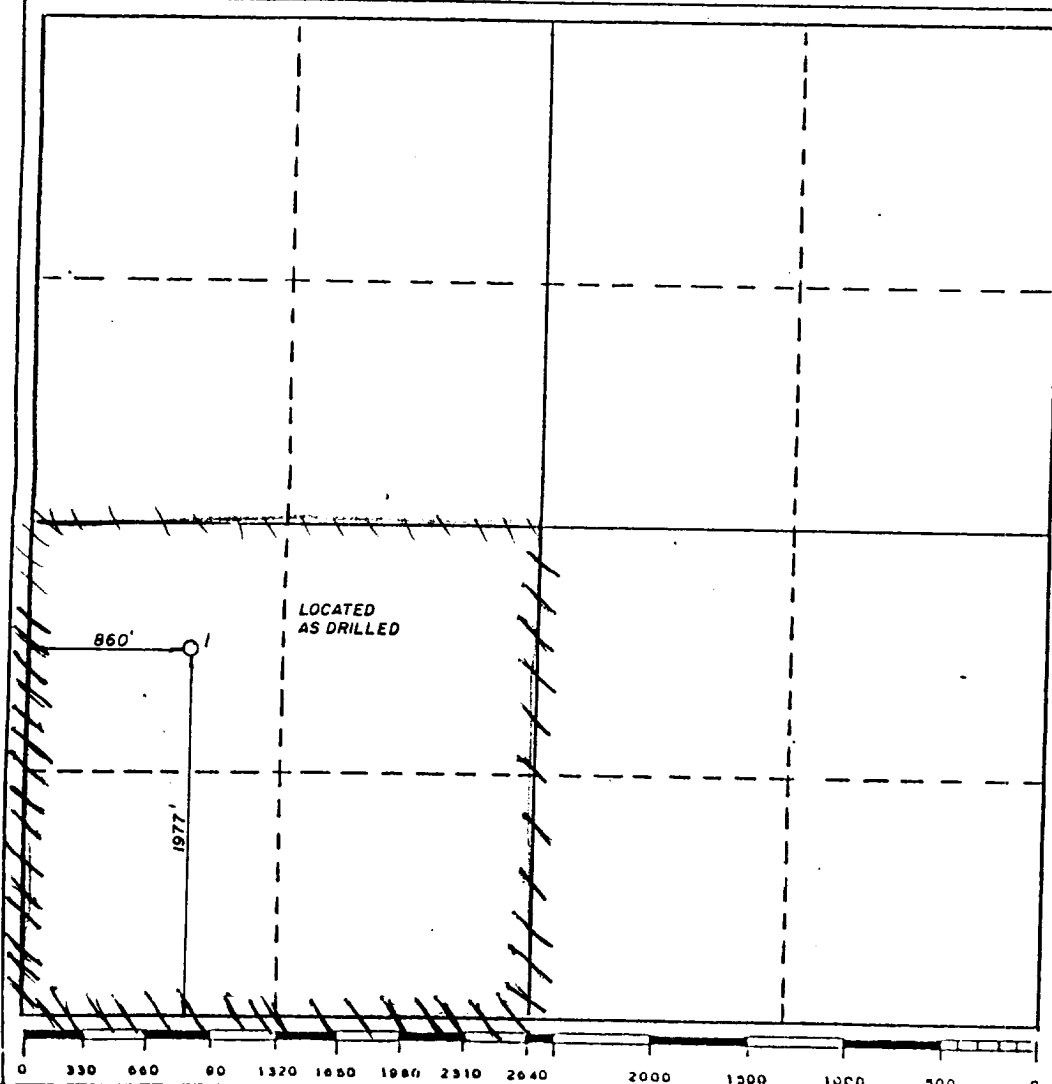
Operator <b>Amoco Production Company</b>		Lease <b>Greenwood Pre-Grayburg Unit Fed.</b>		Well No. <b>1</b>
Unit Letter <b>L</b>	Section <b>26</b>	Township <b>18 South</b>	Range <b>31 East</b>	County <b>Eddy</b>
Actual Footage Location of Well: <b>1977</b> feet from the <b>South</b> line and <b>860</b> feet from the <b>West</b> line				
Ground Level Elev. <b>3652</b>	Producing Formation <b>Atoka</b>	Pool <b>Shugart-North Atoka</b>	Dedicated Acreage: <b>160</b> Acres	

1. Outline the acreage dedicated to the subject well by colored pencil or hatchure marks on the plat below.
2. If more than one lease is dedicated to the well, outline each and identify the ownership thereof (both as to working interest and royalty).
3. If more than one lease of different ownership is dedicated to the well, have the interests of all owners been consolidated by communitization, unitization, force-pooling, etc?

☐ Yes ☐ No If answer is "yes," type of consolidation \_\_\_\_\_

If answer is "no," list the owners and tract descriptions which have actually been consolidated. (Use reverse side of this form if necessary.) \_\_\_\_\_

No allowable will be assigned to the well until all interests have been consolidated (by communitization, unitization, forced-pooling, or otherwise) or until a non-standard unit, eliminating such interests, has been approved by the Division.



#### CERTIFICATION

I hereby certify that the information contained herein is true and complete to the best of my knowledge and belief.

*H. I. Black*

Name

**H. I. BLACK**

Position

**SR. ADMIN. ANALYST**

Company

**Amoco Production Co.**

Date

**March 30, 1989**

I hereby certify that the well location shown on this plat was plotted from field notes of actual surveys made by me or under my supervision, and that the same is true and correct to the best of my knowledge and belief.

February 28, 1989

Date Surveyed

*Jeffrey L. Fansler*

Registered Land Surveyor

**10034**

**REGISTERED**

**PROFESSIONAL LAND SURVEYOR**

Certificate No.

**NMLS 10034**

