

UNITED STATES  
DEPARTMENT OF THE INTERIOR  
GEOLOGICAL SURVEY

APPLICATION FOR PERMIT TO DRILL, DEEPEN, OR PLUG BACK

1a. TYPE OF WELL **ARTESIA, OFFICE**  
**DRILL** ☒ **DEEPEN** ☐ **PLUG BACK** ☒  
b. TYPE OF WELL  
OIL WELL ☐ GAS WELL ☐ OTHER ☐ SINGLE ZONE ☐ MULTIPLE ZONE ☐

2. NAME OF OPERATOR  
Amoco Production Company

3. ADDRESS OF OPERATOR  
P. O. Box 68, Hobbs, NM 88240

4. LOCATION OF WELL (Report location clearly and in accordance with any State requirements)  
At surface 660' FNL X 1980 FWL Sec. 26  
At proposed prod. zone (Unit C, NE/4, SW/4)

14. DISTANCE IN MILES AND DIRECTION FROM NEAREST TOWN OR POST OFFICE\*  
8 miles southeast of Loco Hills, N.M.

15. DISTANCE FROM PROPOSED\*  
LOCATION TO NEAREST  
PROPERTY OR LEASE LINE, FT.  
(Also to nearest drg. unit line, if any)

18. DISTANCE FROM PROPOSED LOCATION\*  
TO NEAREST WELL, DRILLING, COMPLETED,  
OR APPLIED FOR, ON THIS LEASE, FT.

21. ELEVATIONS (Show whether DF, RT, GR, etc.)

23. 3653.4 GL

16. NO. OF ACRES IN LEASE  
1880

19. PROPOSED DEPTH  
12000

20. ROTARY OR CABLE TOOLS  
Rotary

22. APPROX. DATE WORK WILL START\*

PROPOSED CASING AND CEMENTING PROGRAM

SIZE OF HOLE	SIZE OF CASING	WEIGHT PER FOOT	SETTING DEPTH	QUANTITY OF CEMENT
17-1/2	13-3/8	48#	800	800 SX Incor
12-1/4	9-5/8	40#	4900	2000 SX Lite, 200 SX CLC
8-3/4	5-1/2	20#, 17#	11876	1325 SX Lite, 825 CLH

Propose to abandon Morrow interval 11,512'-16' and to recompleate well to the Atoka intervals 11,090'-97' and 11,100'-110' per the following: Load well with 2% KCC water. Well is currently shut-in. Remove tree, install BOP and pull 2-3/8" tubing, packer and tailpipe. Set packer at 11,266 and land tailpipe at 11,425. Run in hole with cast iron bridge plug and set at approx. 11,450'. Cap with 35' of class H cement. Top perf at 11,512'. Run in hole with Van gun assembly, retrievable packer, on-off tool and 2-3/8" tubing. Set packer at approx. 10,986'. Perf 11,090'-97' and 11,100'-110' with 4 SPF. If well fails to flow, proceed to acidize as follows: Pump 2000 gals of 7-1/2% MS acid at 3 to 4 bbls per minute. Flush acid to perfs with 2000 gal of 2% KCL water. Attempt to produce well.

0+4-NMOCD,A 1-W. STAFFORD 1-HOU

IN ABOVE SPACE DESCRIBE PROPOSED PROGRAM: If proposal is to deepen or plug back, give data on present productive zone and proposed new productive zone. If proposal is to drill or deepen directionally, give pertinent data on subsurface locations and measured and true vertical depths. Give blowout preventer program, if any.

SIGNED Mark Randolph TITLE Administrative Analyst DATE 6-21-82

(This space for Federal or State office use)

PERMIT NO. APPROVED  
(Orig. Sgd.) PETER W. CHESTER

APPROVAL DATE

APPROVED BY

TITLE

DATE

CONDITIONS OF APPROVAL, IF ANY:

JUN 29 1982  
FOR  
JAMES A. GILLHAM  
DISTRICT SUPERVISOR

See Instructions On Reverse Side

All distances must be from the outer boundaries of the Section.

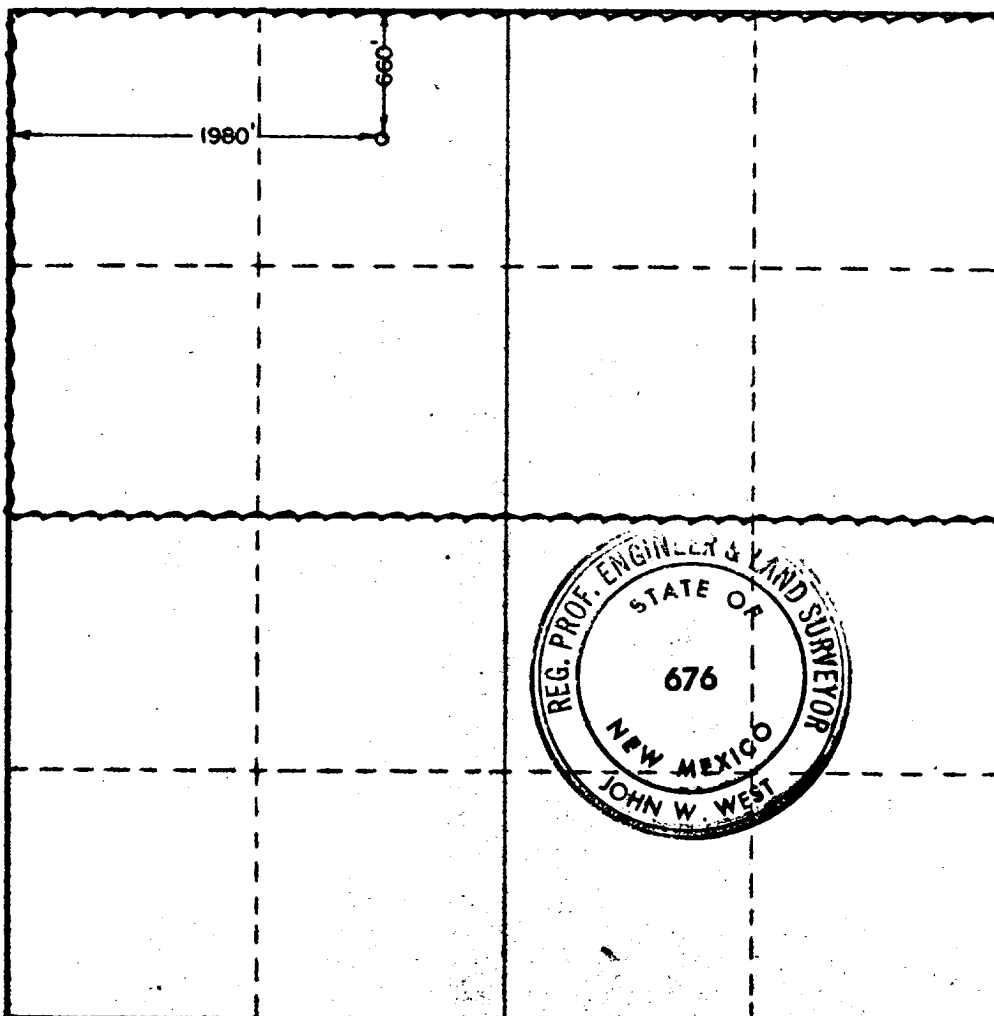
Operator <b>Amoco Production Co.</b>		Lease <b>Greenwood Pre Grayburg Unit D Com.</b>		Well No. <b>1</b>
Unit Letter <b>C</b>	Section <b>26</b>	Township <b>18 South</b>	Range <b>31 East</b>	County <b>Eddy</b>
Actual Footage Location of Well: <b>660</b> feet from the <b>North</b> line and <b>1980</b> feet from the <b>West</b> line				
Ground Level Elev. <b>3653.4</b>	Producing Formation <b>Atoka</b>	Pool <b>Shugart Atoka</b>	Dedicated Acreage: <b>320</b> Acres	

1. Outline the acreage dedicated to the subject well by colored pencil or hachure marks on the plat below.
2. If more than one lease is dedicated to the well, outline each and identify the ownership thereof (both as to working interest and royalty).
3. If more than one lease of different ownership is dedicated to the well, have the interests of all owners been consolidated by communitization, unitization, force-pooling, etc?

☒ Yes ☐ No If answer is "yes," type of consolidation Unitized

If answer is "no," list the owners and tract descriptions which have actually been consolidated. (Use reverse side of this form if necessary.)

No allowable will be assigned to the well until all interests have been consolidated (by communitization, unitization, forced-pooling, or otherwise) or until a non-standard unit, eliminating such interests, has been approved by the Commission.



#### CERTIFICATION

I hereby certify that the information contained herein is true and complete to the best of my knowledge and belief.

Name  
*Mark Randolph*  
Position  
Administrative Analyst  
Company  
Amoco Production Company  
Date  
6-23-82

I hereby certify that the well location shown on this plat was plotted from field notes of actual surveys made by me or under my supervision, and that the same is true and correct to the best of my knowledge and belief.

Date Surveyed  
**May 21, 1980**  
Registered Professional Engineer  
and/or Land Surveyor

*John W. West*  
Certificate No. **JOHN W. WEST 676**  
**PATRICK A. ROMERO 8883**  
**Ronald J. Eidan 3239**

