

NF MEXICO OIL CONSERVATION COMMISS
WELL LOCATION AND ACREAGE DEDICATION PLAT

Form C-102
 Supersedes C-128
 Effective 1-1-65

All distances must be from the outer boundaries of the Section.

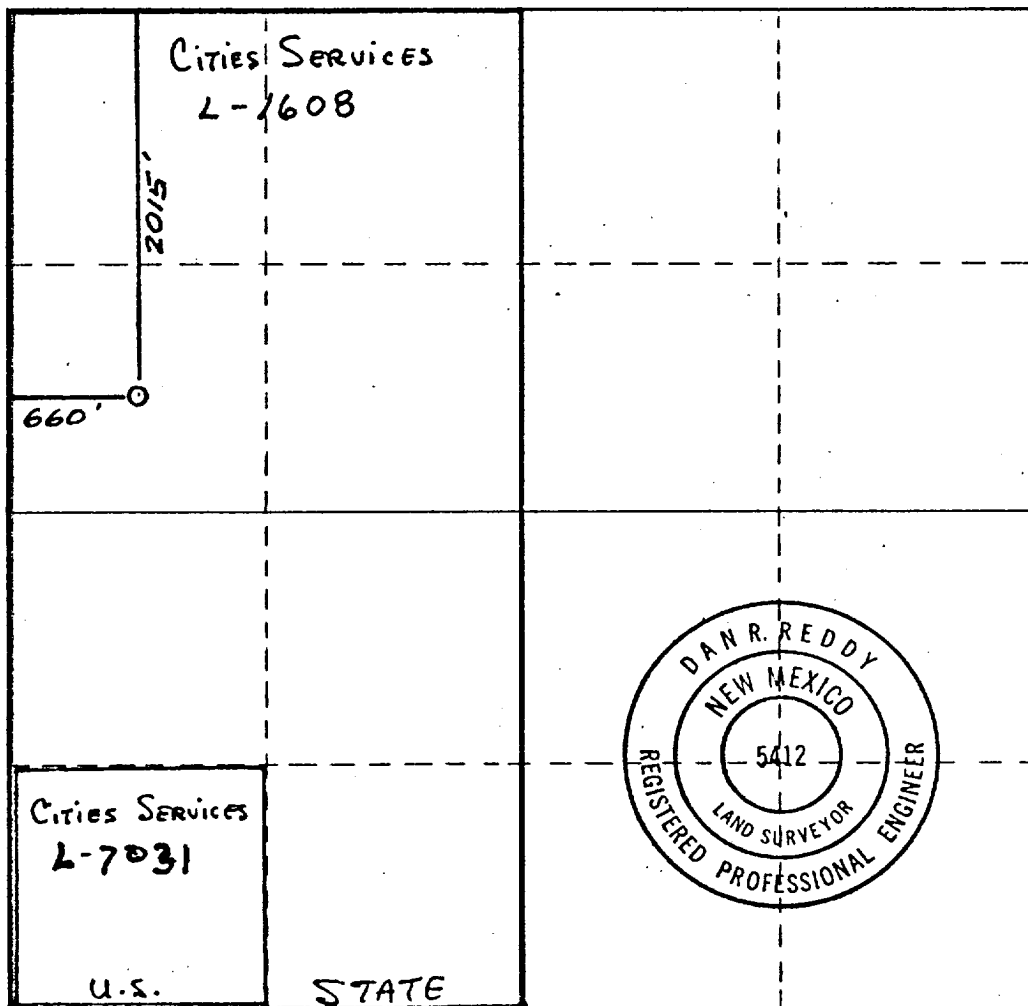
Operator YATES PETROLEUM CORPORATION			Lease Latham OC State Com		Well No. 1
Unit Letter E	Section 32	Township 19 South	Range 21 East	County Eddy	
Actual Footage Location of Well:					
2015 feet from the North line and		660 feet from the West line			
Ground Level Elev. 4541.	Producing Formation MORROW	Pool UNDERS. MORROW	Dedicated Acreage: 320 Acres		

1. Outline the acreage dedicated to the subject well by colored pencil or hachure marks on the plat below.
2. If more than one lease is dedicated to the well, outline each and identify the ownership thereof (both as to working interest and royalty).
3. If more than one lease of different ownership is dedicated to the well, have the interests of all owners been consolidated by communitization, unitization, force-pooling, etc?

☒ Yes ☐ No If answer is "yes," type of consolidation **COMMUNITIZED**

If answer is "no," list the owners and tract descriptions which have actually been consolidated. (Use reverse side of this form if necessary.) _____

No allowable will be assigned to the well until all interests have been consolidated (by communitization, unitization, forced-pooling, or otherwise) or until a non-standard unit, eliminating such interests, has been approved by the Commission.



CERTIFICATION

I hereby certify that the information contained herein is true and complete to the best of my knowledge and belief.

Johnny A. Lopez
 Name

JOHNNY A. LOPEZ
 Position

REGULATORY COORDINATOR
 Company

YATES PETROLEUM CORPORATION
 Date

7/29/80

I hereby certify that the well location shown on this plat was plotted from field notes of actual surveys made by me or under my supervision, and that the same is true and correct to the best of my knowledge and belief.

Date Surveyed
July 24, 1980

Registered Professional Engineer
 and/or Land Surveyor

Dan R. Reddy
 Certificate No.

NM PE&LS #5412

