

NO. OF COPIES RECEIVED		
DISTRIBUTION		
SANTA FE	1	
FILE	1	1
U.S.G.S.		
LAND OFFICE		
OPERATOR	1	

NEW MEXICO OIL CONSERVATION COMMISSION

MAR 11 1981

O. C. D.  
ARTESIA, OFFICE

Form C-101  
Revised 1-1-77

5A. Indicate type of lease  
STATE ☐ FEE ☒

5B. Indicate type of lease

APPLICATION FOR PERMIT TO DRILL, DEEPEN, OR PLUG BACK

1a. Type of Work		7. Field Acreage (Acres)	
b. Type of Well OIL WELL <input checked="" type="checkbox"/> GAS WELL <input type="checkbox"/> OTHER <input type="checkbox"/>		8. Farm or Lease Name	
2. Name of Operator Yates Petroleum Corporation ✓		Glass-Kincaid "OS"	
3. Address of Operator 207 South Fourth Street, Artesia, NM 88210		9. Well No. 1	
4. Location of Well UNIT LETTER D LOCATED 330 FEET FROM THE North LINE AND 330 FEET FROM THE West LINE OF SEC. 7 TWP. 19S RGE. 25E NMPM		10. Field and Well, or Well No. Penasco Draw SA-Yeso	
11. Elevation (show whether DFL, RL, etc.) 3644.2 GL		12. Drilling Contractor Eddy	
13. Estimated Depth approx. 3100'		14. Formation Yeso	
15. Kind of Casing Blanket		16. Rotary or Casing Rotary	
21. Approx. Date When Well is to be Drilled ASAP			

PROPOSED CASING AND CEMENT PROGRAM

SIZE OF HOLE	SIZE OF CASING	WEIGHT PER FOOT	SETTING DEPTH	SACKS OF CEMENT	EST. TOP
15"	10 3/4"	32.75# J-55	approx. 310'	250	circulate
9 1/2"	7"	20# J-55	approx. 970'	500	circulate
6 1/4"	4 1/2"	9.5# J-55	approx. 3100'	250	circulate

We propose to drill and test the Yeso and San Andres formations. Approximately 310' of surface casing will be set to shut off gravel and caving. Intermediate casing will be set at least 100' below the Artesian Water Zone. 4 1/2" production casing will be run, perforated and possibly sand frac'd for production.

MUD PROGRAM: Fresh water Gel to 970' fresh water to TD.

BOP PROGRAM: BOP's will be installed on 7" casing and tested, pipe rams daily blind rams on trips.

This location was originally approved as Penasco #1 for Conoco, Inc. 30-015-2312.

APPROVAL VALID FOR 180 DAYS  
PERMIT EXPIRES 4-13-81  
UNLESS DRILLING UNDERWAY

IN ABOVE SPACE DESCRIBE PROPOSED PROGRAM: IF PROPOSAL IS TO DEEPEN OR PLUG BACK, GIVE DATA ON PRESENT PRODUCTIVE ZONE AND PROPOSED NEW PRODUCTIVE ZONE. GIVE BLOWOUT PREVENTER PROGRAM, IF ANY.

I hereby certify that the information above is true and complete to the best of my knowledge and belief.

Signed [Signature] Title Geographer Date 3-9-81  
(This space for State Use)

APPROVED BY [Signature] TITLE SUPERVISOR, DISTRICT II DATE MAR 13 1981

CONDITIONS OF APPROVAL, IF ANY:

Cement must be placed to surface behind casing

Notify N.M.O.C.C. in sufficient time to witness cementing

the 7" casing

NE MEXICO OIL CONSERVATION COMMISSION  
WELL LOCATION AND ACREAGE DEDICATION PLAT

Form C-162  
Supersedes C-11  
Effective 1-1-65

All distances must be from the outer boundaries of the Section.

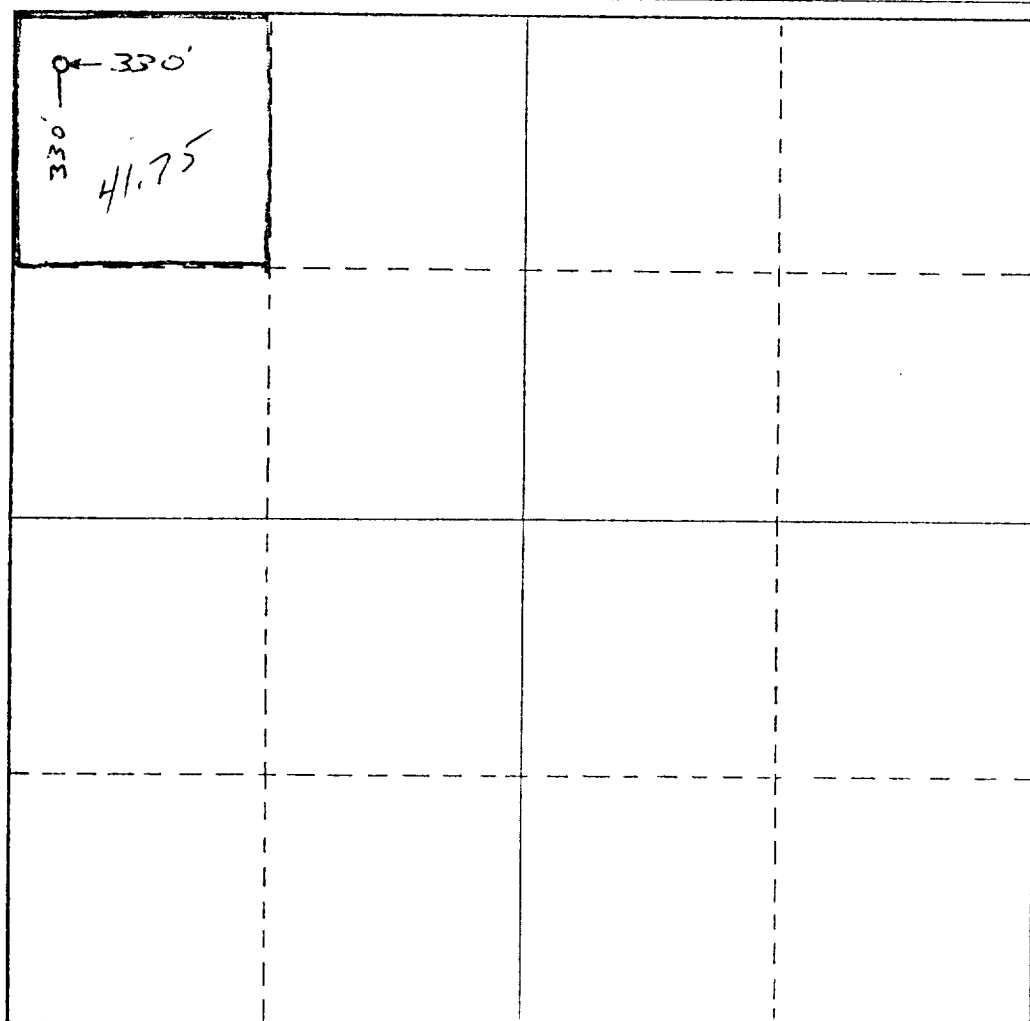
Operator <i>Yates Petroleum Corporation</i>		Lease <i>Glass-Kincaid</i>		Well No. <i>1</i>	
Unit Letter <i>D</i>	Section <i>7</i>	Township <i>19 South</i>	Range <i>25 East</i>	County <i>Eddy</i>	
Actual Footage Location of Well: <i>330</i> feet from the <i>North</i> line and <i>330</i> feet from the <i>West</i> line					
Ground Level Elev. <i>3644.2</i>	Producing Formation <i>Yeso</i>	Pool <i>Panuco Draw SA-Yeso Area</i>		Dedicated Acreage: <i>40 41.75</i> Acres	

1. Outline the acreage dedicated to the subject well by colored pencil or hatchure marks on the plat below.
2. If more than one lease is dedicated to the well, outline each and identify the ownership thereof (both as to working interest and royalty).
3. If more than one lease of different ownership is dedicated to the well, have the interests of all owners been consolidated by communitization, unitization, force-pooling, etc?

☐ Yes ☐ No If answer is "yes," type of consolidation \_\_\_\_\_

If answer is "no," list the owners and tract descriptions which have actually been consolidated. (Use reverse side of this form if necessary.) \_\_\_\_\_

No allowable will be assigned to the well until all interests have been consolidated (by communitization, unitization, forced-pooling, or otherwise) or until a non-standard unit, eliminating such interests, has been approved by the Commission.



CERTIFICATION

I hereby certify that the information contained herein is true and complete to the best of my knowledge and belief.

*Gliserio Rodriguez*  
Name  
*GLISERIO RODRIGUEZ*  
Position  
*GEOGRAPHER*  
Company  
*YATES PETROLEUM CORP*  
Date  
*3-9-81*

I hereby certify that the well location shown on this plat was plotted from field notes of actual surveys made by me or under my supervision, and that the same is true and correct to the best of my knowledge and belief.

*Refer to Original Plat*

Date Surveyed \_\_\_\_\_

Registered Professional Engineer and/or Land Surveyor

Certificate No. \_\_\_\_\_



NEW MEXICO OIL CONSERVATION COMMISSION  
WELL LOCATION AND ACREAGE DEDICATION PLAT

Form C-102  
Supersedes C-101  
Effective 1-1-76

All distances must be from the outer boundaries of the Section

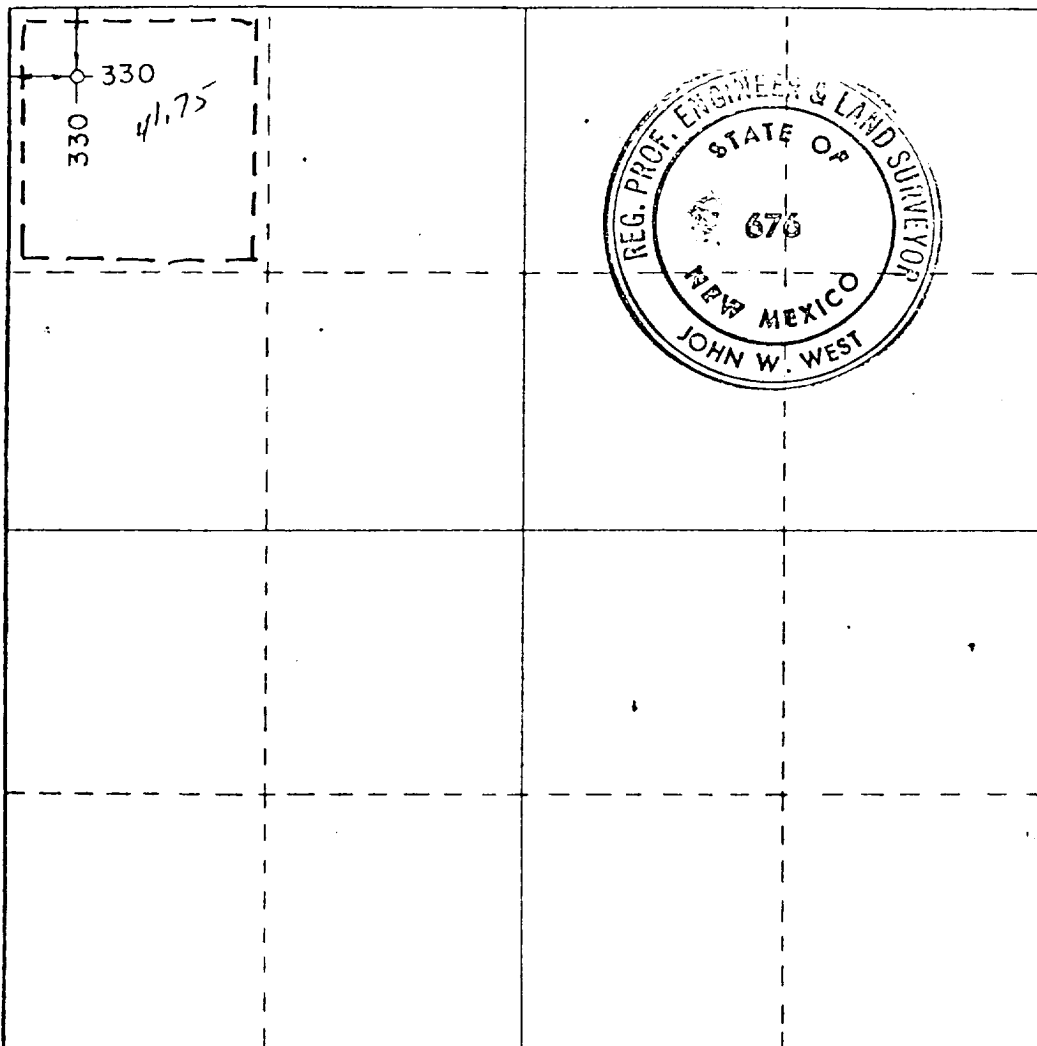
Operator <b>Conoco Inc.</b>		Lease <b>Penasco</b>		Well No. <b>1</b>
Unit Letter <b>D</b>	Section <b>7</b>	Township <b>19 south</b>	Range <b>25 east</b>	County <b>Eddy</b>
Actual Footage Location of Well: <b>330</b> feet from the <b>north</b> line and <b>330</b> feet from the <b>west</b> line				
Ground Level Elev. <b>3644.2</b>	Producing Formation <b>Yeso - San Andres Assoc.</b>	Pool <b>SA - Yeso Penasco Draw, Yeso - San Andres Assoc.</b>	Dedicated Acreage <b>48.75</b>	

1. Outline the acreage dedicated to the subject well by colored pencil or hatchure marks on the plat below.
2. If more than one lease is dedicated to the well, outline each and identify the ownership thereof (both as to working interest and royalty).
3. If more than one lease of different ownership is dedicated to the well, have the interests of all owners been consolidated by communitization, unitization, force-pooling, etc?

☐ Yes ☐ No If answer is "yes," type of consolidation \_\_\_\_\_

If answer is "no," list the owners and tract descriptions which have actually been consolidated. (Use reverse side of this form if necessary.) \_\_\_\_\_

No allowable will be assigned to the well until all interests have been consolidated (by communitization, unitization, forced-pooling, or otherwise) or until a non-standard unit, eliminating such interests, has been approved by the Commission.



CERTIFICATION

I hereby certify that the information contained herein is true and complete to the best of my knowledge and belief.

Name **John A. Romero**  
Position **Administrative Supervisor**  
Company **Conoco Inc.**  
Date **10/21/80**

I hereby certify that the well location shown on this plat was plotted from the notes of actual surveys made by me or under my supervision, and that the same is true and correct to the best of my knowledge and belief.

Date Surveyed

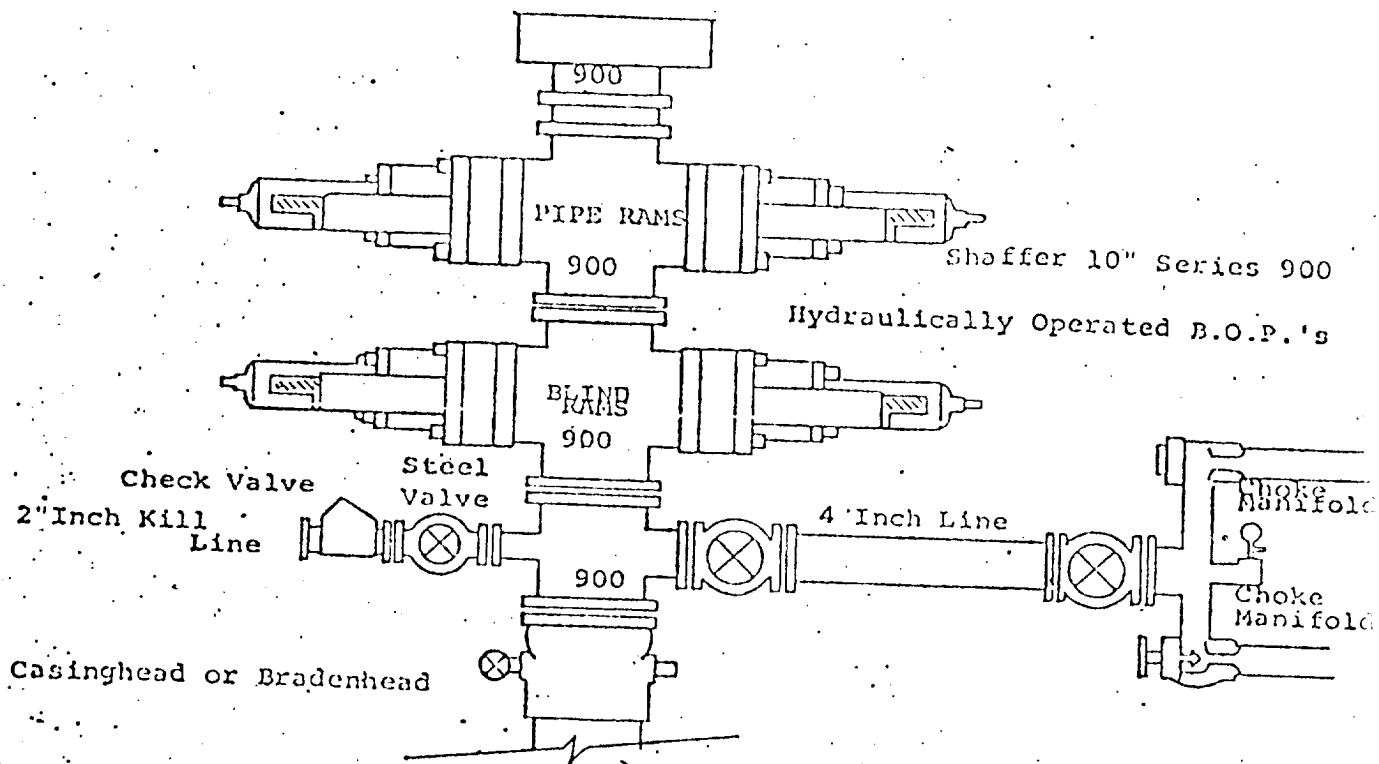
**9-12-80**

Registered Professional Engineer and/or Land Surveyor

**John W. West**

Certificate No. **JOHN W. WEST 676**  
**PATRICK A. ROMERO 677**  
**Ronald J. Eidson 38**

330 660 990 1320 1650 1980 2310 2640 2970 3300 3630 3960 4290 4620 4950 5280 5610 5940 6270 6600



THE FOLLOWING CONSTITUTE MINIMUM BLOWOUT PREVENTER REQUIREMENTS

1. All preventers to be hydraulically operated with secondary manual controls installed prior to drilling out from under casing.
2. Choke outlet to be a minimum of 4" diameter.
3. Kill line to be of all steel construction of 2" minimum diameter.
4. All connections from operating manifolds to preventers to be all steel. hole or tube a minimum of one inch in diameter.
5. The available closing pressure shall be at least 15% in excess of that required with sufficient volume to operate the B.O.P.'s.
6. All connections to and from preventer to have a pressure rating equivalent to that of the B.O.P.'s.
7. Inside blowout preventer to be available on rig floor.
8. Operating controls located a safe distance from the rig floor.
9. Hole must be kept filled on trips below intermediate casing. Operator not responsible for blowouts resulting from not keeping hole full.
10. D. P. float must be installed and used below zone of first gas intrusion.