

N. O. C. D. COPY
UNITED STATES
DEPARTMENT OF THE INTERIOR
GEOLOGICAL SURVEYSUBMIT IN TRIPL E*
(Other instructions on
reverse side)Form approved.
Budget Bureau No. 42-R1425.

30-015-23591

APPLICATION FOR PERMIT TO DRILL, DEEPEN, OR PLUG BACK

1a. TYPE OF WORK

DRILL ☒DEEPEN ☐PLUG BACK ☐

b. TYPE OF WELL

OIL
WELL ☐GAS
WELL ☒

OTHER

SINGLE
ZONE ☒MULTIPLE
ZONE ☐

2. NAME OF OPERATOR

Amoco Production Company

3. ADDRESS OF OPERATOR

P. O. Box 68 Hobbs, NM 88240

4. LOCATION OF WELL (Report location clearly and in accordance with any State requirements.*)

At surface

At proposed prod. zone 1980' FNL & 1980' FWL, Sec. 29
(Unit F, SE/4, NW/4)

14. DISTANCE IN MILES AND DIRECTION FROM NEAREST TOWN OR POST OFFICE*

26.3 miles southeast of Artesia, NM

15. DISTANCE FROM PROPOSED*

LOCATION TO NEAREST
PROPERTY OR LEASE LINE, FT.
(Also to nearest drlg. unit line, if any)

16. NO. OF ACRES IN LEASE

17. NO. OF ACRES ASSIGNED
TO THIS WELL

320

18. DISTANCE FROM PROPOSED LOCATION*
TO NEAREST WELL, DRILLING, COMPLETED,
OR APPLIED FOR, ON THIS LEASE, FT.

19. PROPOSED DEPTH

8750'

20. ROTARY OR CABLE TOOLS

Rotary

21. ELEVATIONS (Show whether DF, RT, GR, etc.)

3818.5' GL

22. APPROX. DATE WORK WILL START*

12-23-80

23.

PROPOSED CASING AND CEMENTING PROGRAM

SIZE OF HOLE	SIZE OF CASING	WEIGHT PER FOOT	SETTING DEPTH	QUANTITY OF CEMENT
17-1/2"	13-3/8"	48#	400'	Circulate to surface
12-1/4"	9-5/8"	36#	2000'	Circulate to surface
8-3/4"	5-1/2"	17#, 20#	8800'	CMT to 500' above ABO (top of cmt at approx. 3240')

Propose to drill and equip well in the Morrow formation. After reaching TD, logs will be run and evaluated. Perforate and stimulate as necessary in attempting commercial production.

MUD PROGRAM: 0'-400' Native mud and fresh water.
400'- TD Commercial mud and brine with minimum properties for safe hole conditions. Raise viscosity and reduce water loss prior to Morrow penetration.

Archaeological survey attached

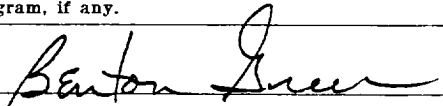
Gas is not dedicated BOP program attached

0+6-USGS, A 1-Hou 1-Susp 1-LBG 1-W. Stafford, Hou

IN ABOVE SPACE DESCRIBE PROPOSED PROGRAM: If proposal is to deepen or plug back, give data on present productive zone and proposed new productive zone. If proposal is to drill or deepen directionally, give pertinent data on subsurface locations and measured and true vertical depths. Give blowout preventer program, if any.

24.

SIGNED



TITLE

Assist. Admin. Analyst

DATE

12-4-80

(This space for Federal or State office use)

PERMIT NO.

APPROVAL DATE

APPROVED BY

TITLE

DATE

CONDITIONS OF APPROVAL, IF ANY:

*See Instructions On Reverse Side

NEW MEXICO OIL CONSERVATION COMMISSION
WELL LOCATION AND ACREAGE DEDICATION PLAT

Form C-102
Supersedes C-128
Effective 1-1-65

All distances must be from the outer boundaries of the Section

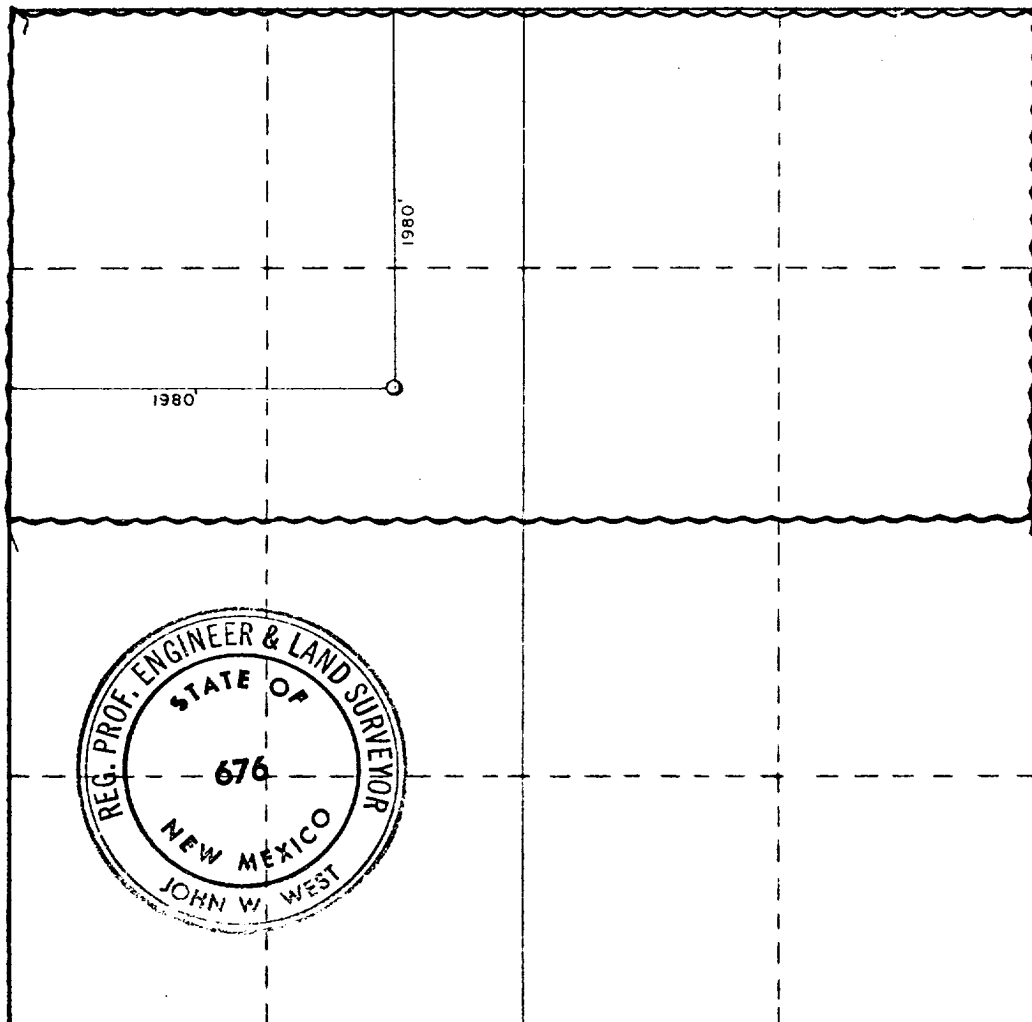
Operator Amoco Production Co.			Lease Federal BW		Well No. 1
Unit Letter F	Section 29	Township 19 South	Range 24 East	County Eddy	
Actual Footage Location of Well: 1980 feet from the North line and 1980 feet from the West line					
Ground Level Elev. 3818.5	Producing Formation Morrow		Foot Siegreest Draw Morrow		Dedicated Acreage: 320 Acres

1. Outline the acreage dedicated to the subject well by colored pencil or hachure marks on the plat below.
2. If more than one lease is dedicated to the well, outline each and identify the ownership thereof (both as to working interest and royalty).
3. If more than one lease of different ownership is dedicated to the well, have the interests of all owners been consolidated by communitization, unitization, force-pooling, etc?

☐ Yes ☐ No If answer is "yes," type of consolidation _____

If answer is "no," list the owners and tract descriptions which have actually been consolidated. (Use reverse side of this form if necessary.) _____

No allowable will be assigned to the well until all interests have been consolidated (by communitization, unitization, forced-pooling, or otherwise) or until a non-standard unit, eliminating such interests, has been approved by the Commission.



CERTIFICATION

I hereby certify that the information contained herein is true and complete to the best of my knowledge and belief.

Name *Benton Green*

Position Assist. Admin. Analyst

Company Amoco Production Company

Date 12-4-80

I hereby certify that the well location shown on this plat was plotted from field notes of actual surveys made by me or under my supervision, and that the same is true and correct to the best of my knowledge and belief.

11-3-80

Date Surveyed

Registered Professional Engineer and/or Land Surveyor

John W. West

Certificate No. **JOHN W. WEST 676**
PATRICK A. ROMERO 6883
Ronald J. Eidson 3239

0 330 660 990 1320 1650 1980 2310 2640 2000 1600 1000 600

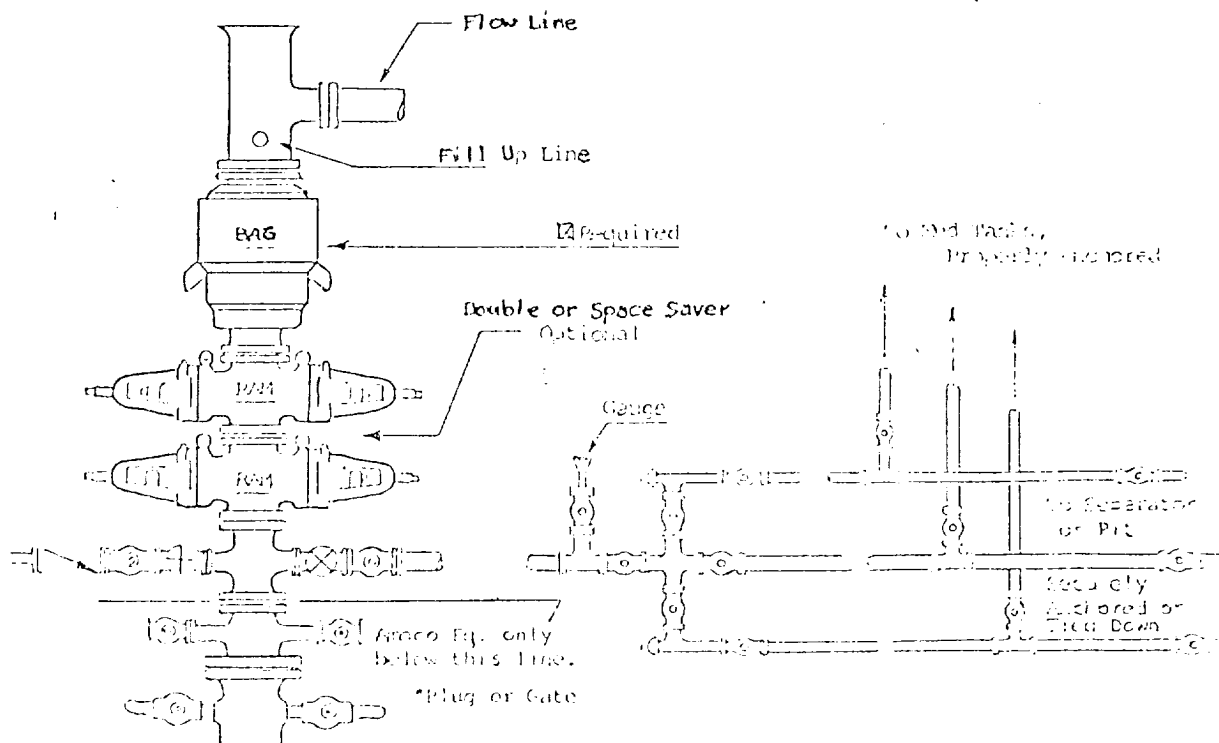
1. BOP'S TO BE FLUID OPERATED.
2. BOP'S AND ALL FITTINGS MUST BE IN GOOD CONDITION AND RATED AT 3000 PSI W.P. MINIMUM.
3. EQUIPMENT THROUGH WHICH BIT MUST PASS SHALL BE AT LEAST AS LARGE AS CASING SIZE BEING DRILLED THROUGH.
4. NIPPLE ABOVE BOP'S SHALL BE SAME SIZE AS LAST CASING SET.
5. UPPER KELLY COCK IS REQUIRED AND SHALL BE 3000# W.P. MINIMUM.
6. T. I. W. OR COMPARABLE SAFETY VALVE SHALL BE AVAILABLE ON RIG FLOOR WITH CONNECTION OR SUBS TO FIT ANY TOOL JOINT IN THE STRING. VALVE TO BE FULL BORE 5000# MIN.
7. VALVE NEXT TO SPOOL SHALL BE 4". OTHER EQUIPMENT MAY BE 3" OR 4". ALL CHOKE MANIFOLD EQUIPMENT SHALL BE FLANGED. FLOW LINE FROM MANIFOLD TO BE MINIMUM OF 3" AND STRAIGHT AS POSSIBLE WITH MINIMUM BENDS.
8. FLUID LINES FROM ACCUMULATOR TO BOP'S AND ALL REMOTE CONTROL FLUID LINES SHALL BE STEEL, AND RATED AT OR ABOVE MAXIMUM ACCUMULATOR PRESSURE. LINES SHALL BE ROUTED IN BUNDLES AND ADEQUATELY PROTECTED FROM DAMAGE.
9. USE RAMS IN FOLLOWING POSITIONS:*

	<u>DRILLING</u>	<u>RUNNING CASING</u>
UPPER RAM	DRILL PIPE	CASING
LOWER RAM	BLIND	BLIND

*AMOCO AREA SUPT. MAY REVERSE LOCATION OF RAMS.

10. CHOKE MANIFOLD, BEYOND SECOND VALVE FROM CROSS MAY BE OPTIONALLY POSITIONED OUTSIDE OF SUBSTRUCTURE.
11. EXTENSIONS AND HAND WHEELS TO BE INSTALLED AND BRACED AT ALL TIMES.
12. TWO INCH (2") LINES AND VALVES ARE PERMITTED ON THE KILL LINE.

NOTE: ALL UNMARKED VALVES MAY BE PLUG OR GATE VALVE, METAL TO METAL SEAL.



Attachment to "Application for Permit to Drill", Form 9-331 C

Federal BW Well No. 1
1980' FNL & 1980' FWL, Sec. 29, T-19-S, R-24-E
Eddy County, New Mexico
Amoco Production Company

1. Location

See attached Form C-102

2. Elevation

See attached Form C-102

3. Geologic name of surface formation.

Quaternary

4. Type of drilling tools and associated equipment to be utilized.

See Form 9-331 C

5. Proposed drilling depth.

See Form 9-331 C

6. Estimated tops of important geologic markers.

San Andres	350'	Cisco	6200'	Morrow Clastics	8510'
Glorietta	1800'	Canyon	7125'		
Abo	3740'	Strawn	7775'		
Wolfcamp Lime	4940'	Atoka	8300'		

7. Estimated depths at which anticipated water, oil, gas or other mineral-bearing formations are expected to be encountered.

Abo	3740'	Canyon	7125'	Morrow Clastics	8510'
Wolfcamp Lime	4940'	Strawn	7775'		
Cisco	6200'	Atoka	8300'		

8. Proposed casing program, including size, grade, and weight of each string and whether it is new or used.

<u>Depth</u>	<u>Size</u>	<u>Weight</u>	<u>Grade</u>	<u>New or Used</u>
400'	13-3/8"	48#	H-40	New
2000'	9-5/8"	36#	K-55	New
8800'	5-1/2"	17#, 20#	S-95	New

9. Proposed cementing program.

13-3/8"	Circulate to surface
9-5/8"	Circulate to surface
5-1/2"	Cement to 500' above Abo (top of cement at approx. 3240')

10. Blowout Preventer Program is attached.

11. Type and characteristics of the proposed circulating medium or mediums to be employed for rotary drilling, and the quantities and types of mud and weighting material to be maintained.

0'-400' Native mud and fresh water
400'-TD Commercial mud and brine with minimum properties for safe hole conditions. Raise viscosity and reduce water loss prior to Morrow penetration.

12. Testing, logging and coring programs to be followed with provisions made for required flexibility.

2000'-TD Comp. neutron formation density
2000'-TD Dual laterolog; micro SFL

13. Any anticipated abnormal pressure or temperatures expected to be encountered or potential hazards, such as hydrogen sulfide gas, along with plans for mitigating such hazards.

None anticipated

14. Anticipated starting date and duration of operation.

12-23-80

15. Other facets of the proposed operation operator wishes to point out for the Geological Survey's consideration of the application.

Request exemptions from the painting stipulations of Sec. 102 (a) (8) of the "Federal Land Policy and Management Act of 1976" to paint any tanks, separators, and treaters required for the production of this well; Amoco's standard gray color. If a pumping unit is required for the continued production of this well, it will be painted black with orange safety color coding which conforms with your current painting guidelines.

Amoco Production Company

Proposed Development Plan for Surface Use

Federal BW Well No. 1
1980' FNL & 1980' FWL, Sec. 29, T-19-S, R-24-E
Eddy County, New Mexico

1. Existing roads including location of exit from main highway.

Detailed map showing drillsite location in relation to the nearest town and all existing roads within one mile of the wellsite are shown on Exhibit A.

Go 12 miles south of Artesia, NM on US 285. Turn West and go 11 miles on paved road. Take unpaved road which runs southwest, south and then east for approx. 1.1 miles. Turn south on unpaved road and go approx. 1.1 miles. Turn west onto unpaved road and go approx. 1.1 miles to access road.

2. Planned access roads.

Access road runs approx. 400' north to location.

3. Location of existing wells.

All existing well within one mile radius are shown on Exhibit C.

4. Location of tank batteries and flow lines

If the well is commercially productive, the production facilities (i.e. tanks, separators, & treaters) will be located on existing pad.

5. Location and type of water supply.

Fresh & brine water to be hauled by commercial hauler.

6. Source of construction materials.

Caliche will be obtained from a pit located in the NE/4, NW/4, Sec. 5, T-20-S, R-23-E, Eddy County, NM

7. WASTE DISPOSAL

- a. Drill cuttings will be disposed of in the reserve pit.
- b. Drilling fluids will be allowed to evaporate in the reserve pit until the pit is dry.

RECEIVED
DEC 5 1989
U.S. GEOLOGICAL SURVEY
ARTESIA, NEW MEXICO

- c. Trash, waste paper, garbage and junk will be burned or buried with a minimum of 24" cover. Waste material will be contained to prevent scattering by wind prior to ultimate disposal.
- d. Any produced water will be contained in tanks and be disposed of in an approved manner. Oil produced will be stored in tanks until sold, at which time it will be hauled from location.
- e. Current laws and regulations pertaining to disposal of human waste will be complied with.
- f. If productive, maintenance waste will be placed in special containers and buried or hauled away periodically.

8. ANCILLARY FACILITIES-

No camps, airstrips, etc. will be constructed.

9. WELLSITE LAYOUT-

- a. Size of Drilling Pad - 330' x 210' x 6"
- b. Compacted - Caliche
- c. Surfaced - No
- d. 450' square area around wellsite has been cleared by archaeologist.
- e. See Exhibit "D".

10. RESTORATION OF SURFACE-

Producing Well - all pits will be cut, filled, and leveled as soon as practical to original condition with rehabilitation to commence following removal of drilling and completion equipment. Rehabilitation to be completed in 180 days if possible.

Dry Hole - same as above with dry hole marker to be installed and surface reseeded if required.

11. OTHER INFORMATION-

- a. Terrain - Stony plain
- b. Soil- Loam
- c. Vegetation-Acacia, Four-wing salt brush, soap tree yucca
- d. Surface Use- Grazing
- e. Ponds and Streams - None
- f. Water Wells None
- g. Residences and Building - None
- h. Arroyos, Canyons, etc. -located near Siegreest Draw
- i. Well Sign - Posted at drill site
- j. Open Pits - All pits containing liquid or mud will be fenced
- k. Archaeological Resources - None found

12. OPERATOR'S REPRESENTATIVE -

Field personnel responsible for compliance with development plan for surface use is:

J. H. Hankins, Drilling Supervisor

P. O. Box 68

Hobbs, NM 88240

Office Phone: (505) 393-2167

LEASE & WELL NUMBER Federal BW Well No. 1

LOCATION 1980' FNL X 1980' FWL, Sec. 29, T-19-S, R-34-E

Certification: The following statement is to be incorporated in the plan and must be signed by the lessee's or operator's field representative who is identified in Item No. 12 of the plan.

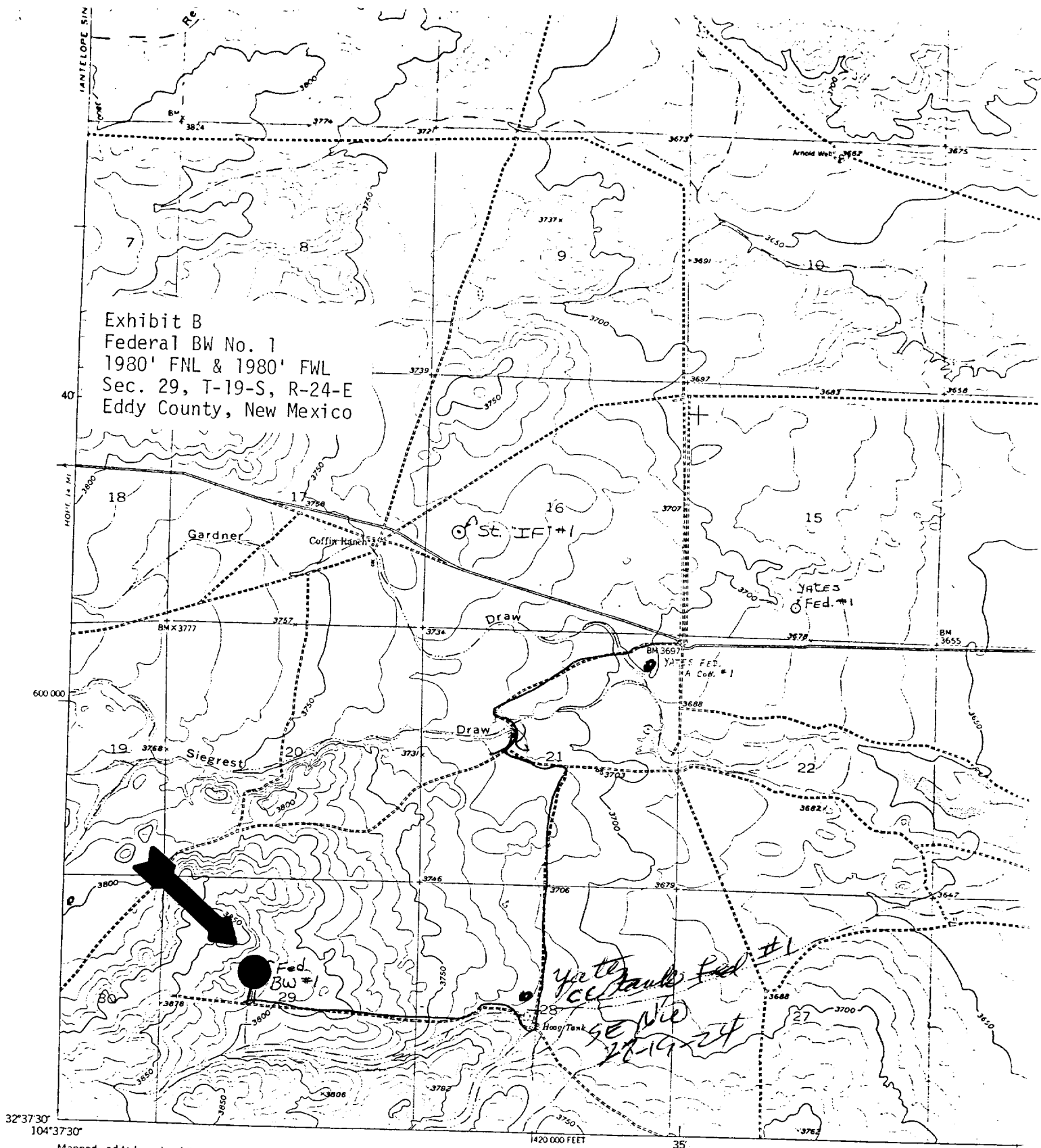
I hereby certify that I, or persons under my direct supervision have inspected the proposed drillsite and access route; that I am familiar with the conditions which presently exist; that the statements made in this plan are, to the best of my knowledge, true and correct; and, that the work associated with the operations proposed herein will be performed by AMOCO PRODUCTION COMPANY and its contractors and subcontractors in conformity with this plan and the terms and conditions under which it is approved.

12-4-80

DATE

J. H. Hankins Drilling Supervisor
NAME AND TITLE

Exhibit B
Federal BW No. 1
1980' FNL & 1980' FWL
Sec. 29, T-19-S, R-24-E
Eddy County, New Mexico



Mapped, edited, and published by the Geological Survey
Control by USGS and USC&GS
Culture and drainage in part compiled from aerial photographs
taken 1947. Topography by planetable surveys 1956
Polyconic projection. 1927 North American datum
10,000-foot grid based on New Mexico coordinate system
east zone

TRUE NORTH
MAGNETIC NORTH
APPROXIMATE MEAN
DECLINATION, 1956

SCALE 1:2400
1 0 1000 2000 3000
1 5 0
CONTOUR INTERVAL 1
DATUM IS MEAN SEA L.

THIS MAP COMPLIES WITH NATIONAL MAP
FOR SALE BY U.S. GEOLOGICAL SURVEY, DENVER 2
A FOLDER DESCRIBING TOPOGRAPHIC MAPS AND 5