

UNITED STATES  
DEPARTMENT OF THE INTERIOR  
BUREAU OF LAND MANAGEMENT

APPLICATION FOR PERMIT TO DRILL, DEEPEN, OR PLUG BACK

1a. TYPE OF WORK

DRILL ☐

DEEPEN ☐

PLUG BACK ☐

b. TYPE OF WELL

OIL  
WELL ☐

GAS  
WELL ☒

OTHER RECOMPLETION

SINGLE  
ZONE ☐

MULTIPLE  
ZONE ☐

2. NAME OF OPERATOR

YATES PETROLEUM CORPORATION (505) 748-1471

3. ADDRESS OF OPERATOR

105 South 4th St., Artesia, NM 88210

4. LOCATION OF WELL (Report location clearly and in accordance with any State requirements.)\*

At surface

1980' FNL, 2310' FWL, Sec. 27-19S-24E

At proposed prod. zone

14. DISTANCE IN MILES AND DIRECTION FROM NEAREST TOWN OR POST OFFICE\*

15. DISTANCE FROM PROPOSED\*

LOCATION TO NEAREST  
PROPERTY OR LEASE LINE, FT.  
(Also to nearest drlg. unit line, if any)

1980'

16. NO. OF ACRES IN LEASE

1000

17. NO. OF ACRES ASSIGNED  
TO THIS WELL

320

18. DISTANCE FROM PROPOSED LOCATION\*

TO NEAREST WELL, DRILLING, COMPLETED,  
OR APPLIED FOR, ON THIS LEASE, FT.

2000'

19. PROPOSED DEPTH

9075'

20. ROTARY OR CABLE TOOLS

Pulling Unit

21. ELEVATIONS (Show whether DF, RT, GR, etc.)

3690' GR

22. APPROX. DATE WORK WILL START\*

Immediately

PROPOSED CASING AND CEMENTING PROGRAM

SIZE OF HOLE	SIZE OF CASING	WEIGHT PER FOOT	SETTING DEPTH	QUANTITY OF CEMENT
17 1/2"	13-3/8"	54#	265'	400 sx (in place)
12 1/4"	8-5/8"	24#	1106'	1150 sx (in place)
7-7/8"	5-1/2"	17#	9074'	635 sx (in place)

Existing Morrow perforations 8854-8942' are non-commercial. Propose to temporarily abandon Morrow zone and recompleat well in Atoka formation by setting RBP  $\pm$  8600'. Perforate Atoka 8475-8482' (8 holes); 8527-8538' (10 holes). Acidize perms in stages and frac if necessary to obtain production.

IN ABOVE SPACE DESCRIBE PROPOSED PROGRAM: If proposal is to deepen or plug back, give data on present productive zone and proposed new productive zone. If proposal is to drill or deepen directionally, give pertinent data on subsurface locations and measured and true vertical depths. Give blowout preventer program, if any.

24.

SIGNED

TITLE Production Supervisor

DATE 12-10-91

(This space for Federal or State office use)

PERMIT NO.

APPROVAL DATE

APPROVED BY

TITLE

DATE

CONDITIONS OF APPROVAL, IF ANY:

12/16/91

\*See Instructions On Reverse Side

Submit to Appropriate  
District Office  
State Lease - 4 copies  
Fee Lease - 3 copies

State of New Mexico  
Energy, Minerals and Natural Resources Department

Form C-102  
Revised 1-1-89

OIL CONSERVATION DIVISION

DISTRICT I  
P.O. Box 1980, Hobbs, NM 88240

P.O. Box 2088  
Santa Fe, New Mexico 87504-2088

DISTRICT II  
P.O. Drawer DD, Artesia, NM 88210

DISTRICT III  
1000 Rio Brazos Rd., Aztec, NM 87410

WELL LOCATION AND ACREAGE DEDICATION PLAT

All Distances must be from the outer boundaries of the section

Operator YATES PETROLEUM CORPORATION			Lease Oakason NV Federal		Well No. 2
Unit Letter F	Section 27	Township 19S	Range 24E	County Eddy	
Actual Footage Location of Well: 1980 feet from the North line and 2310 feet from the West line					
Ground level Elev. 3690'		Producing Formation Atoka		Pool Undes. Atoka	Dedicated Acreage: 320 Acres

1. Outline the acreage dedicated to the subject well by colored pencil or hatchure marks on the plat below.

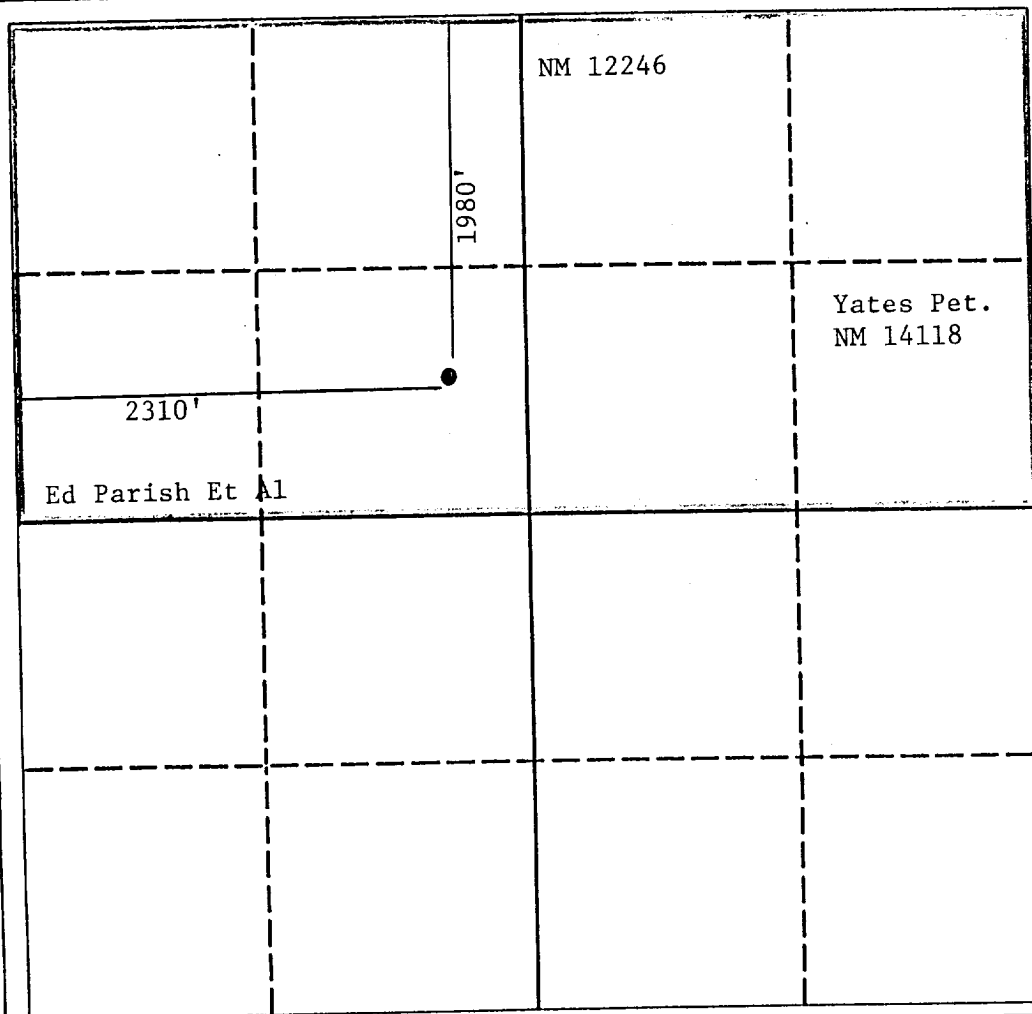
2. If more than one lease is dedicated to the well, outline each and identify the ownership thereof (both as to working interest and royalty).

3. If more than one lease of different ownership is dedicated to the well, have the interest of all owners been consolidated by communitization, unitization, force-pooling, etc.?

☒ Yes ☐ No If answer is "yes" type of consolidation Communitized

If answer is "no" list the owners and tract descriptions which have actually been consolidated. (Use reverse side of this form if necessary.)

No allowable will be assigned to the well until all interests have been consolidated (by communitization, unitization, forced-pooling, or otherwise) or until a non-standard unit, eliminating such interest, has been approved by the Division.



OPERATOR CERTIFICATION

I hereby certify that the information contained herein is true and complete to the best of my knowledge and belief.

Signature

Printed Name

JUANITA GOODLETT

Position

PRODUCTION SUPERVISOR

Company

YATES PETROLEUM CORPORATION

Date

12-10-91

SURVEYOR CERTIFICATION

I hereby certify that the well location shown on this plat was plotted from field notes of actual surveys made by me or under my supervision, and that the same is true and correct to the best of my knowledge and belief.

Date Surveyed

Refer to original plat

Signature & Seal of dated 10-22-80  
Professional Surveyor

Certificate No.