

UNITED STATES
DEPARTMENT OF THE INTERIOR
GEOLOGICAL SURVEY

APPLICATION FOR PERMIT TO DRILL, DEEPEN, OR PLUG BACK

1a. TYPE OF WORK

DRILL ☒DEEPEN ☐PLUG BACK ☐

b. TYPE OF WELL

OIL
WELL ☒GAS
WELL ☐

OTHER

SINGLE
ZONE ☐MULTIPLE
ZONE ☐

2. NAME OF OPERATOR

Westall - Mask

3. ADDRESS OF OPERATOR

P.O. Drawer 1477, Roswell, New Mexico 88201

4. LOCATION OF WELL (Report location clearly and in accordance with any State requirements.)

At surface

~~330 FSL and~~ 1650 FSL + 330 FEL

At proposed prod. zone

14. DISTANCE IN MILES AND DIRECTION FROM NEAREST TOWN OR POST OFFICE*

ARTESIA, OFFICE

15. DISTANCE FROM PROPOSED*

LOCATION TO NEAREST
PROPERTY OR LEASE LINE, FT.
(Also to nearest drlg. unit line, if any)

330'

16. NO. OF ACRES IN LEASE

160

17. NO. OF ACRES ASSIGNED
TO THIS WELL

40

18. DISTANCE FROM PROPOSED LOCATION*

TO NEAREST WELL, DRILLING, COMPLETED,
OR APPLIED FOR, ON THIS LEASE, FT.

1320

19. PROPOSED DEPTH

4200

20. ROTARY OR CABLE TOOLS

Rotary

21. ELEVATIONS (Show whether DF, RT, GR, etc.)

22. APPROX. DATE WORK WILL START*

1-81

23.

PROPOSED CASING AND CEMENTING PROGRAM

SIZE OF HOLE	SIZE OF CASING	WEIGHT PER FOOT	SETTING DEPTH	QUANTITY OF CEMENT
11"	8 5/8"	20#	650'	Approx. 250 Scks. to circ.
7 7/8"	4 1/2"	9.5#	4,200	Approx. 400 Scks. to circ.

Blowout Preventer will be Double Manual (Shaeffer) B.O.P. with 3000# test.

Mud Program - We will use fresh water to 650', then use salt get to
total depth

No anticipated abnormal pressure or temperatures.

Anticipated starting date will be January 1981.

Tops: Yates 2600' Queen 3400' Grayburg 4000'

IN ABOVE SPACE DESCRIBE PROPOSED PROGRAM: If proposal is to deepen or plug back, give data on present productive zone and proposed new productive zone. If proposal is to drill or deepen directionally, give pertinent data on subsurface locations and measured and true vertical depths. Give blowout preventer program, if any.

24.

SIGNED

TITLE

Richard E. Barton
Personal Representative

DATE

12-20-80

(This space for Federal or State office use)

for the Estate of Jack Mask

PERMIT NO.

APPROVAL DATE

(Orig. Sgd.) GEORGE H. STEWART

ACTING DISTRICT ENGINEER

DEC 31 1980

APPROVED BY

DATE

CONDITIONS OF APPROVAL, IF ANY:

**NEW MEXICO OIL CONSERVATION COMMISSION
WELL LOCATION AND ACREAGE DEDICATION PLAT**

Form C-102
Supersedes C-128
Effective 1-1-65

All distances must be from the outer boundaries of the Section

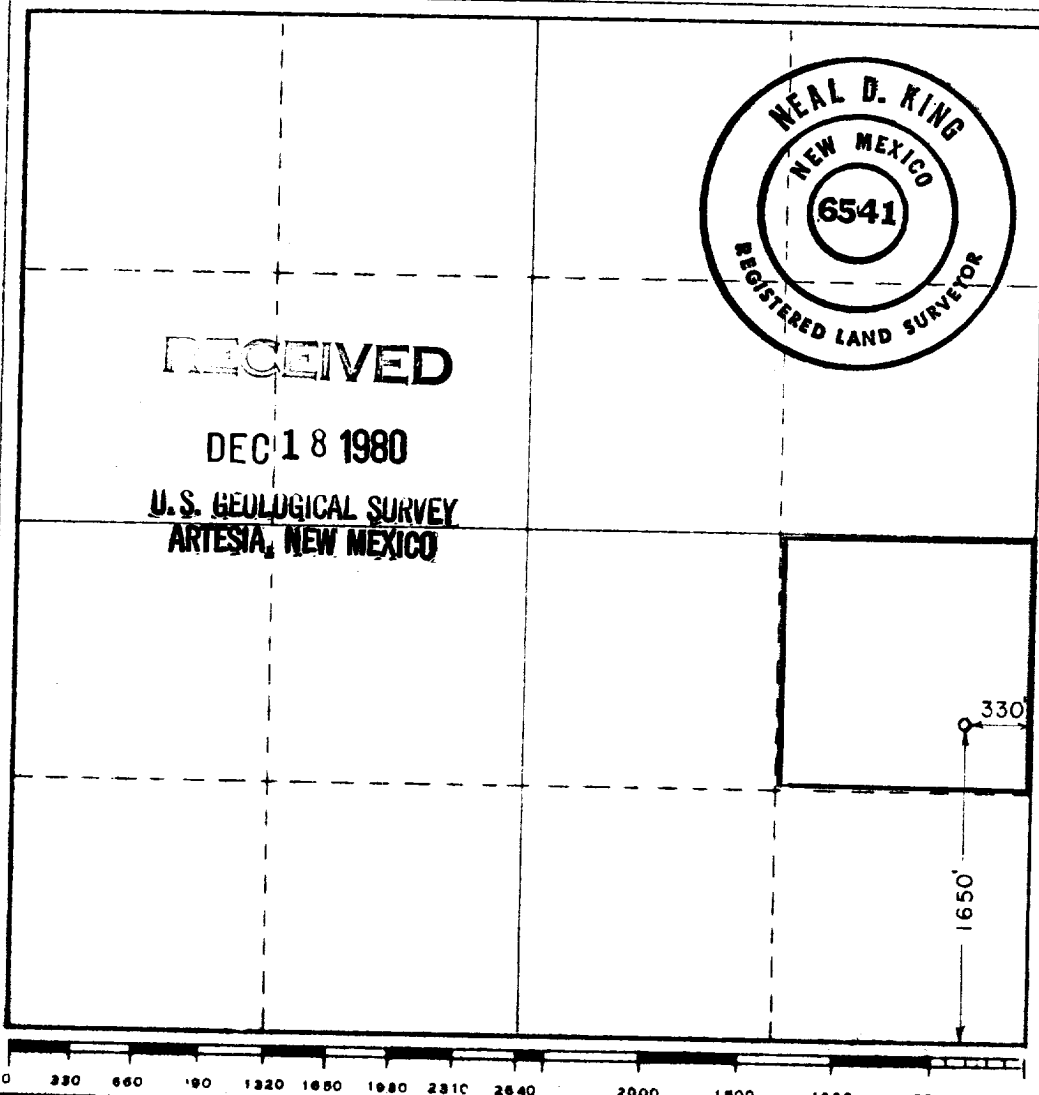
Operator Westall and Mask			Lease Hinkle Federal		Well No. 14
Unit Letter I	Section 35	Township 18S	Range 31E	County Eddy	
Actual Footage Location of Well: 330 feet from the East line and 1650 feet from the South line					
Ground Level Elev. 3640.6	Producing Formation y-sr-o-g		Pool Shugart y-sr-o-g	Dedicated Acreage 40	

1. Outline the acreage dedicated to the subject well by colored pencil or hatchure marks on the plat below.
2. If more than one lease is dedicated to the well, outline each and identify the ownership thereof (both as to working interest and royalty).
3. If more than one lease of different ownership is dedicated to the well, have the interests of all owners been consolidated by communitization, unitization, force-pooling, etc?

☐ Yes ☐ No If answer is "yes," type of consolidation _____

If answer is "no," list the owners and tract descriptions which have actually been consolidated. (Use reverse side of this form if necessary.) _____

No allowable will be assigned to the well until all interests have been consolidated (by communitization, unitization, forced-pooling, or otherwise) or until a non-standard unit, eliminating such interests, has been approved by the Commission.



CERTIFICATION

I hereby certify that the information contained herein is true and complete to the best of my knowledge and belief.

Richard E. Barton
Personal Representative
for the Estate of Jack Mask

Richard E. Barton

County

Westall - Mask

Date

12-20-80

I hereby certify that the well location shown on this plat was plotted from field notes of actual surveys made by me or under my supervision, and that the same is true and correct to the best of my knowledge and belief.

Date Surveyed

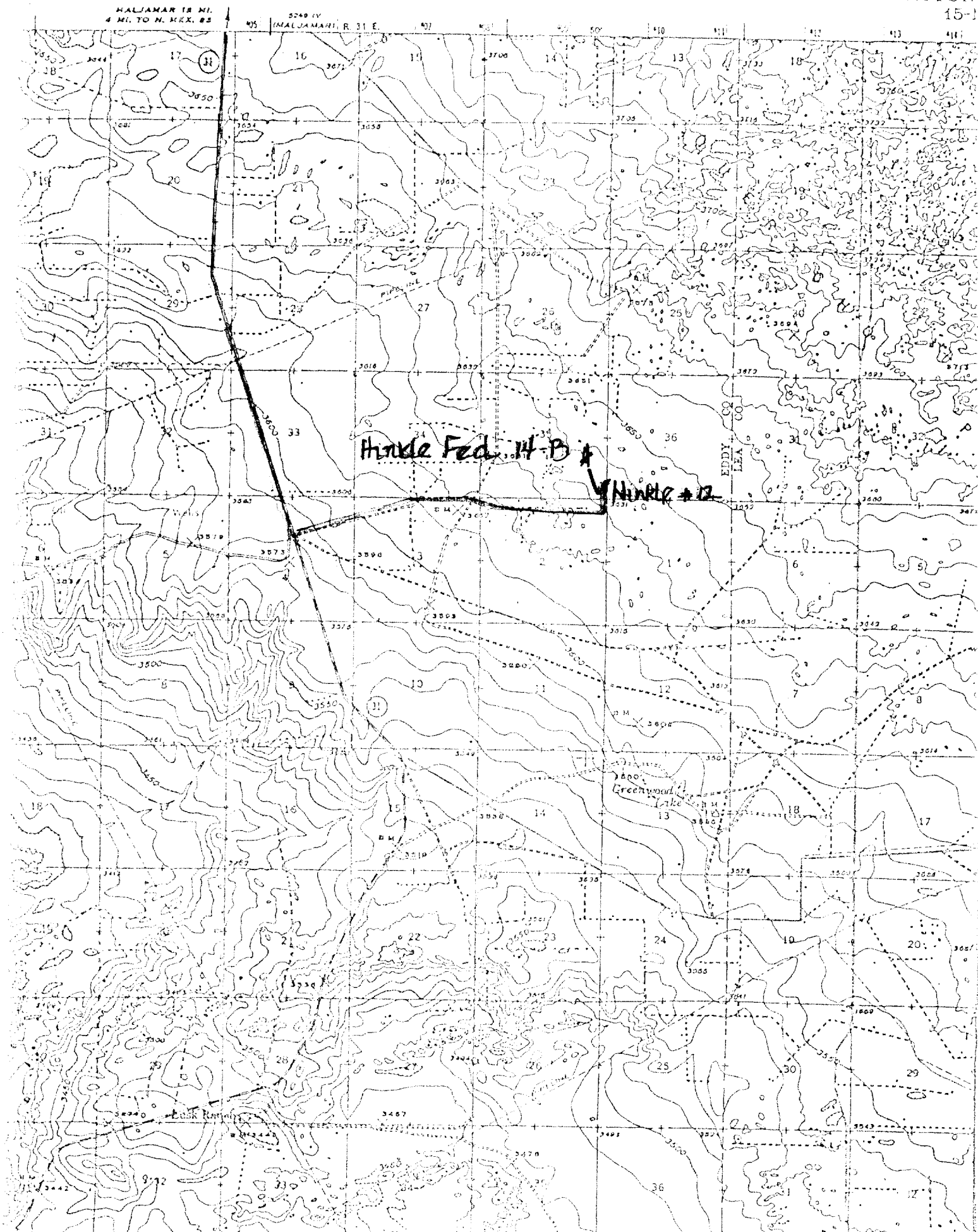
November 28, 1980

Registered Professional Engineer
and/or Land Surveyor

Neal D. King R.L.S.
Certificate No. **6541**

Schedule 1

CLAYTON
15-1



Section 35

Township 18

Range 31

Schedule 1-A

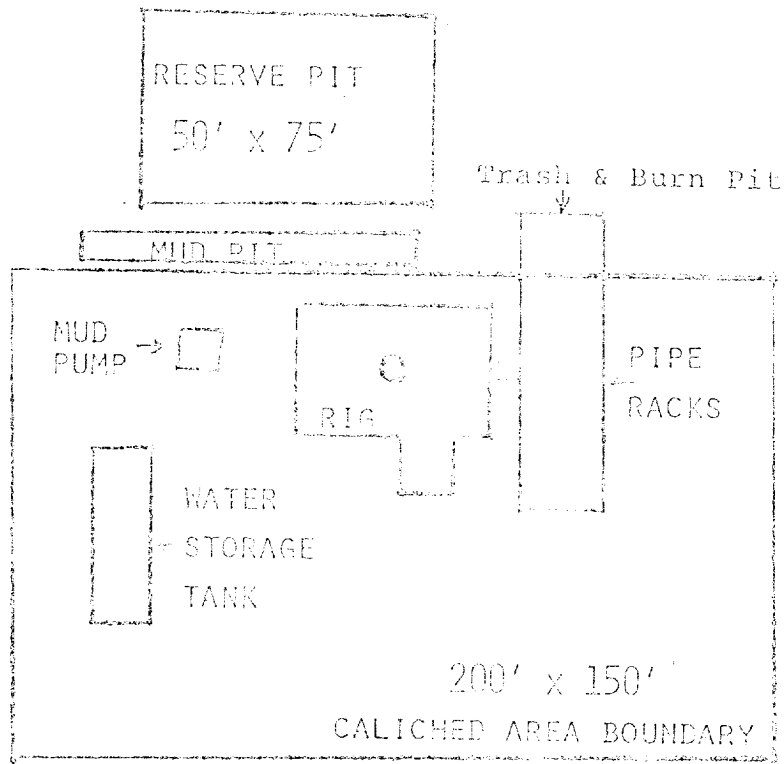
SCHEDULE 1-A

	27		26
34			35

* 100% Federal
#14B

* - Little B #12
- Existing Tank Bulky
will be used.

Schedule - 2



ROAD

SCALE 1" = 50'

DEVELOPMENT PLAN FOR SURFACE USE

WESTALL AND MASK, ROSWELL NM 88201