

| | |
|------------------------|---|
| NO. OF COPIES RECEIVED | |
| DISTRIBUTION | |
| SANTA FE | 1 |
| FILE | 1 |
| U.S.G.S. | 2 |
| LAND OFFICE | 1 |
| OPERATOR | 1 |

NEW MEXICO OIL CONSERVATION COMMISSION

RECEIVED

FEB 03 1981

O. C. D.
ARTESIA, OFFICE

30-015-23650

Form C-101
Revised 1-1-65

| |
|--|
| 5A. Indicate Type of Lease STATE <input checked="" type="checkbox"/> FEE <input type="checkbox"/> |
| 5. State Oil & Gas Lease No. LG-2604 |

APPLICATION FOR PERMIT TO DRILL, DEEPEN, OR PLUG BACK

| | | |
|---|--|--|
| 1a. Type of Work b. Type of Well OIL WELL <input checked="" type="checkbox"/> GAS WELL <input type="checkbox"/> OTHER <input type="checkbox"/> c. Name of Operator Marbob Energy Corporation ✓ d. Address of Operator P.O. Box 304, Artesia, N.M. 88210 e. Location of Well UNIT LETTER 0 LOCATED 330 FEET FROM THE South LINE AND 1980 FEET FROM THE East LINE OF SEC. 36 TWP. 19S RGE. 29E NMPM f. Proposed Depth 1600' g. Formation Seven Rivers h. Rotary or C.T. Cable Tool i. Elevations (Show whether DF, RT, etc.) 3325.5' j. Kind & Status Plug. Bond Statewide Active k. Drilling Contractor Jenkins Brothers l. Approx. Date Work will start 2/5/81 | | 7. Unit Agreement Name 8. Farm or Lease Name Gulf St. 9. Well No. 1 10. Field and Pool, or Wildcat Wildcat 11. County Eddy |
|---|--|--|

PROPOSED CASING AND CEMENT PROGRAM

| SIZE OF HOLE | SIZE OF CASING | WEIGHT PER FOOT | SETTING DEPTH | SACKS OF CEMENT | EST. TOP |
|--------------|----------------|-----------------|---------------|-----------------|----------|
| 12 1/4" | 10 3/4" | 32.75# | 200 | None | |
| 10" | 8 5/8" | 24# | 450 | 100 | |
| 8" | 4 1/2" | 10.50# | 1600' | 200 | |

We propose to drill to 1600' to test the Seven Rivers formation. We will drill to 200', set 10 3/4" (no cement), drill on to approximately 450', pull 10 3/4" and run 8 5/8" casing, cement, drill to TD, run 4 1/2" casing and cement.

POSTED ID!
API + N.C. 1-6-81

APPROVAL VALID FOR 180 DAYS
PERMIT EXPIRES 8-5-81
UNLESS DRILLING UNDERWAY

IN ABOVE SPACE DESCRIBE PROPOSED PROGRAM; IF PROPOSAL IS TO DEEPEN OR PLUG BACK, GIVE DATA ON PRESENT PRODUCTIVE ZONE AND PROPOSED NEW PRODUCTIVE ZONE. GIVE BLOWOUT PREVENTER PROGRAM, IF ANY.

I hereby certify that the information above is true and complete to the best of my knowledge and belief.

Signed Carolyn Davis Title Production Clerk Date 2/2/81

(This space for State Use)

APPROVED BY W. A. Gussert TITLE SUPERVISOR, DISTRICT II DATE FEB 03 1981

CONDITIONS OF APPROVAL, IF ANY
Set 8 7/8" @ top of Salt @ approx. 350' + Circulate Cement

NEW MEXICO OIL CONSERVATION COMMISS.
WELL LOCATION AND ACREAGE DEDICATION PLAT

Form C-102
Supersedes C-128
Effective 1-1-65

All distances must be from the outer boundaries of the Section.

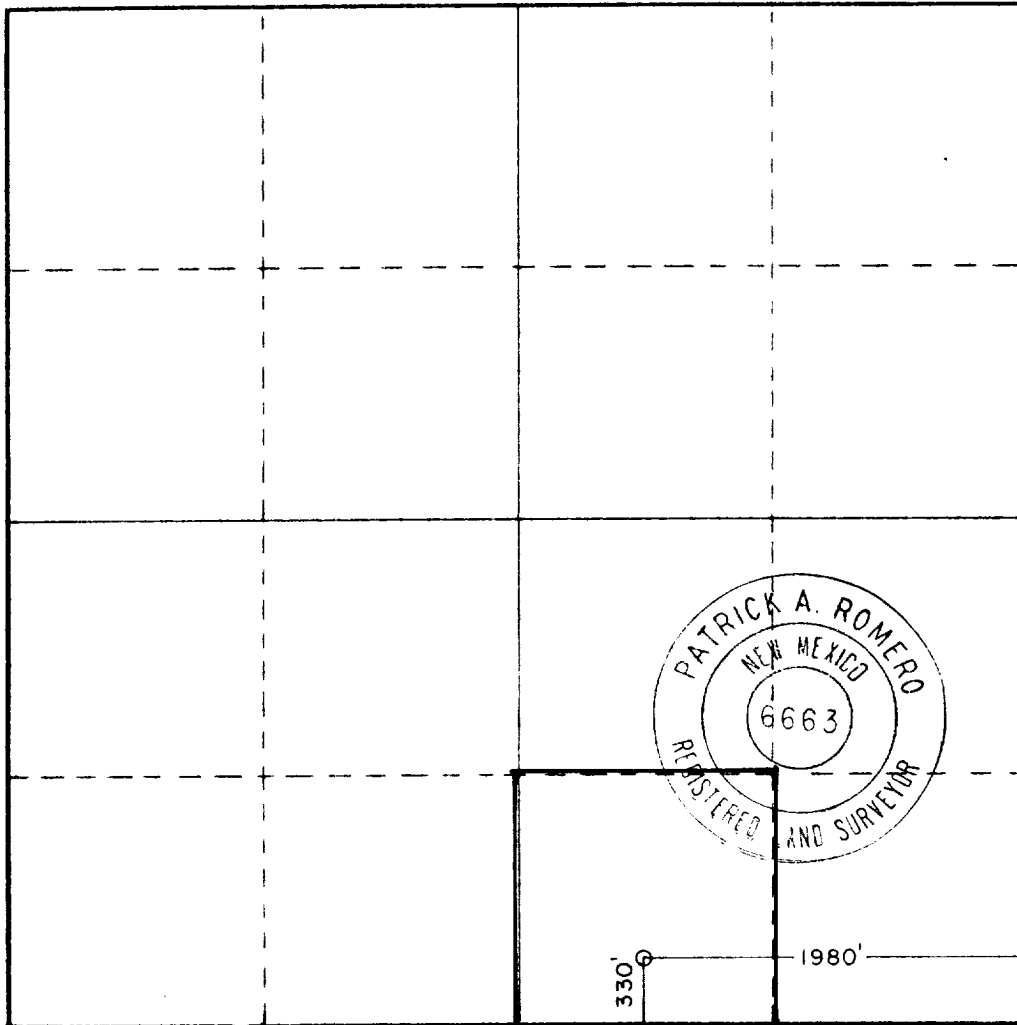
| | | | | | | | | |
|---|--|----------------------------|----------------------------|-----------------------|--|---------------------------------------|--|--|
| Operator Marbob Energy Corp. | | | Lease Gulf State | | | Well No. 1 | | |
| Unit Letter 0 | Section 36 | Township 19South | Range 29East | County Eddy | | | | |
| Actual Footage Location of Well: 330 feet from the South line and 1980 feet from the East line | | | | | | | | |
| Ground Level Elev. 3325.5' | Producing Formation Seven Rivers | | Pool Wildcat | | | Dedicated Acreage: 40 Acres | | |

1. Outline the acreage dedicated to the subject well by colored pencil or hachure marks on the plat below.
2. If more than one lease is dedicated to the well, outline each and identify the ownership thereof (both as to working interest and royalty).
3. If more than one lease of different ownership is dedicated to the well, have the interests of all owners been consolidated by communitization, unitization, force-pooling, etc?

☐ Yes ☐ No If answer is "yes," type of consolidation _____

If answer is "no," list the owners and tract descriptions which have actually been consolidated. (Use reverse side of this form if necessary.) _____

No allowable will be assigned to the well until all interests have been consolidated (by communitization, unitization, forced-pooling, or otherwise) or until a non-standard unit, eliminating such interests, has been approved by the Commission.



CERTIFICATION

I hereby certify that the information contained herein is true and complete to the best of my knowledge and belief.

Carolyn Orris
Name

Carolyn Orris

Position

Production Clerk

Company

Marbob Energy Corp.

Date

2/2/81

I hereby certify that the well location shown on this plat was plotted from field notes of actual surveys made by me or under my supervision, and that the same is true and correct to the best of my knowledge and belief.

Date Surveyed

Jan. 29, 1981

Registered Professional Engineer and/or Land Surveyor

Patrick A. Romero

Certificate No. **JOHN W. WEST 676**
PATRICK A. ROMERO 6663
Ronald J. Eidson 3239