

UNITED STATES  
DEPARTMENT OF THE INTERIOR  
GEOLOGICAL SURVEY

SUNDRY NOTICES AND REPORTS ON WELLS

(Do not use this form for proposals to drill or to deepen or plug back to a different reservoir. Use Form 9-331-C for such proposals.)

MAR 03 1981

1. oil ☐ gas ☒ other ☐

2. NAME OF OPERATOR

Yates Petroleum Corporation / ARTESIA, OFFICE

3. ADDRESS OF OPERATOR

207 South 4th St., Artesia, NM 88210

4. LOCATION OF WELL (REPORT LOCATION CLEARLY. See space 17 below.)

AT SURFACE: 660' FNL & 1980' FEL

AT TOP PROD. INTERVAL:

AT TOTAL DEPTH:

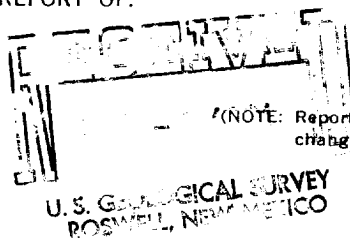
16. CHECK APPROPRIATE BOX TO INDICATE NATURE OF NOTICE, REPORT, OR OTHER DATA

REQUEST FOR APPROVAL TO:

TEST WATER SHUT-OFF ☐  
FRACTURE TREAT ☐  
SHOOT OR ACIDIZE ☐  
REPAIR WELL ☐  
PULL OR ALTER CASING ☐  
MULTIPLE COMPLETE ☐  
CHANGE ZONES ☐  
ABANDON\* ☐  
(other) ☐

SUBSEQUENT REPORT OF:

☐  
☐  
☐  
☐  
☐  
☐  
☐  
☐  
☐



(NOTE: Report results of multiple completion or zone change on Form 9-330.)

17. DESCRIBE PROPOSED OR COMPLETED OPERATIONS (Clearly state all pertinent details, and give pertinent dates, including estimated date of starting any proposed work. If well is directionally drilled, give subsurface locations and measured and true vertical depths for all markers and zones pertinent to this work.)\*

Spudded a 17-1/2" hole 1:40 PM 2-12-81.

TD 335'. Ran 8 joints of 13-3/8" H-40 61# casing set at 335'. 1- regular pattern float shoe at 335'. Cemented w/350 sacks Class C 2% CaCl. Slurry weight 14.8 1.32 cu ft/sack. Compressive strength at 70 degrees 1023 psi in 12 hours. PD 10:30 AM 2-14-81. Bumped plug to 750 psi, released pressure and float held okay. Circulated 35 sacks to pit. WOC 13 hours. NU and tested to 600 psi, okay. Reduced hole to 12-1/4".

TD 2300'. Ran 53 joints of 9-5/8" 32# K-55 ST&C casing set at 2300'. 1-regular pattern guide shoe at 2300'. Flapper insert float at 2270'. Cemented w/740 sacks 65-35 Poz, 4% Bentonite, 8# Kolite, 1/4# celloflakes and 3% CaCl. Tailed in w/200 sacks Class C 2% CaCl. PD 7:45 PM 2-19-81. Bumped plug to 900 psi, released pressure and float held okay. Cement circulated 50 sacks to pit. WOC 19-1/4 hours. Nippled up and tested to 1000 psi, okay. Reduced hole to 8-3/4". Drilled plug and resumed drilling.

Subsurface Safety Valve: Manu. and Type \_\_\_\_\_ Set @ \_\_\_\_\_ Ft.

18. I hereby certify that the foregoing is true and correct

SIGNED Juanita Goodell TITLE Engineering Secretary

DATE 2-24-81

APPROVED BY  
CONDITIONS OF APPROVAL, IF ANY

ACCEPTED FOR RECORD  
PETER W. CHESTER

MAR 2 1981

U.S. GEOLOGICAL SURVEY  
ROSWELL, NEW MEXICO

See Instructions on Reverse Side