

5 - NMOCC - Artesia
1 - J.L. Conquest Ft. Worth
1 - File

AMENDED
N MEXICO OIL CONSERVATION COMMISSION
WELL LOCATION AND ACREAGE DEDICATION

RECEIVED

Form C-107
Supersedes C-128
Effective 1-1-65

MAY 28 1981

30-015-23694

All distances must be from the outer boundaries of the Section

THRESHOLD DEVELOPMENT CO.			Lease CONOCO 7 ST.		ARTESIA OFFICE		Well No. 3	
Section E	Section 7	Township T 19 S	Range R 29 E	County EDDY COUNTY				

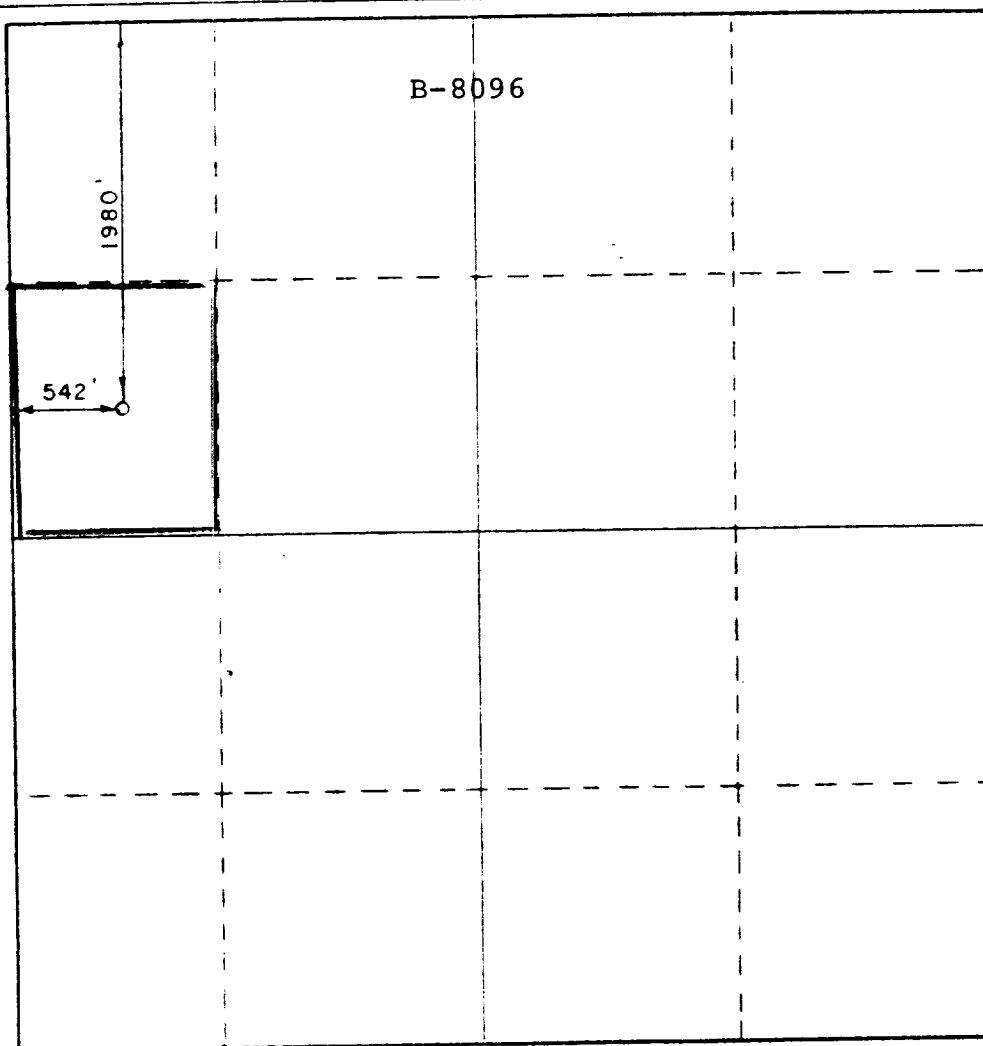
Actual Footage Location of Well:							
1980 feet from the		NORTH line and		542 feet from the		WEST line	
Ground Level Elevation 3379.1	Producing Formation Grayburg		Pool East Millman Queen-Grayburg		Dedicated Acreage: 32.82 Acres		

- Outline the acreage dedicated to the subject well by colored pencil or hachure marks on the plat below.
- If more than one lease is dedicated to the well, outline each and identify the ownership thereof (both as to working interest and royalty).
- If more than one lease of different ownership is dedicated to the well, have the interests of all owners been consolidated by communitization, unitization, force-pooling, etc?

☐ Yes ☒ No If answer is "yes," type of consolidation _____

If answer is "no," list the owners and tract descriptions which have actually been consolidated. (Use reverse side of this form if necessary.) N/A

No allowable will be assigned to the well until all interests have been consolidated (by communitization, unitization, forced-pooling, or otherwise) or until a non-standard unit, eliminating such interests, has been approved by the Commission.



CERTIFICATION

I hereby certify that the information contained herein is true and complete to the best of my knowledge and belief.

Name
Peggy A. Redman
Position
Engineer Assistant
Company
Threshold Development Co.
Date
May 22, 1981

I hereby certify that the well location shown on this plat was plotted from field notes of actual surveys made by me or under my supervision, and that the same is true and correct to the best of my knowledge and belief.

Date
MARCH 25 1981
Registered Professional Engineer
and/or Land Surveyor
3239
Certified by
PATRICK A. ROMERO
Ronald J. Eidson 3239

33' 880 90 120 1680 1980 2310 2640 2000 1800 1600 1400 1200 1000 800 600 400 200 0