

NO. OF COPIES RECEIVED	
DISTRIBUTION	
SANTA FE	1
FILE	1
U.S.G.S.	2
LAND OFFICE	1
OPERATOR	1

NEW MEXICO OIL CONSERVATION COMMISSION  
**RECEIVED**

MAY 4 1981

O. C. D.

30-015-23763

Form C-101  
Revised 1-1-65

5A. Indicate Type of Lease  
STATE ☐ FEE ☒

5. State Oil & Gas Lease No.

APPLICATION FOR PERMIT TO DRILL, DEEPEN, OR PLUG BACK

1a. Type of Work DRILL <input checked="" type="checkbox"/> DEEPEN <input type="checkbox"/> PLUG BACK <input type="checkbox"/>		7. Unit Agreement Name
b. Type of Well OIL WELL <input type="checkbox"/> GAS WELL <input checked="" type="checkbox"/> OTHER <input type="checkbox"/> SINGLE ZONE <input type="checkbox"/> MULTIPLE ZONE <input type="checkbox"/>		8. Farm or Lease Name Emma "QE" Comm
2. Name of Operator Yates Petroleum Corporation		9. Well No. 1
3. Address of Operator 207 S. 4th St. Artesia, NM 88210		10. Field and Pool, or Wildcat Undes. Morrow
4. Location of Well UNIT LETTER K LOCATED 1980 FEET FROM THE South LINE AND 1650 FEET FROM THE West LINE OF SEC. 22 TWP. 19S RGE. 24E NMPM		12. County Eddy
19. Proposed Depth 9000'		19A. Formation Morrow
20. Rotary or C.T. Rotary		
21. Elevations (Show whether DF, RT, etc.) 3681' GL	21A. Kind & Status Plug. Bond Blanket	21B. Drilling Contractor Moran 9
22. Approx. Date Work will start ASAP		

PROPOSED CASING AND CEMENT PROGRAM

SIZE OF HOLE	SIZE OF CASING	WEIGHT PER FOOT	SETTING DEPTH	SACKS OF CEMENT	EST. TOP
17 1/2"	13 3/8	48# J-55	approx. 370'	450	
12 1/4"	8 5/8	24# J-55	approx. 1000'	620	
7 7/8"	5 1/2" or 4 1/4"	15.5 - 17# 10.5 - 11.6#	approx. 9000'	400	

We intend to drill and test the Morrow and intermediate formations. Approximately 350' of surface casing will be set to shut off gravel and cavings. The intermediate casing will be set around 100' below the Artesian Water Zone. If commercial, will run 4 1/2" or 5 1/2" with 600' of cement cover, then perforate and stimulate as needed for production.

MUD PROGRAM: F.W. Gel and LCM to 1000', fresh water to 5000' KCL @3800'; Drispak and starch KCL to 8250'; Drispak, starch and salt gel to TD.

BOP PROGRAM: BOP's and hydril will be installed on the 8 5/8" casing and tested daily.

GAS NOT DEDICATED.

APPROVAL VALID FOR 180 DAYS  
PERMIT EXPIRES 11-6-81  
UNLESS DRILLING UNDERWAY

IN ABOVE SPACE DESCRIBE PROPOSED PROGRAM: IF PROPOSAL IS TO DEEPEN OR PLUG BACK, GIVE DATA ON PRESENT PRODUCTIVE ZONE AND PROPOSED NEW PRODUCTIVE ZONE. GIVE BLOWOUT PREVENTER PROGRAM, IF ANY.

I hereby certify that the information above is true and complete to the best of my knowledge and belief.

Signed [Signature] Title Geographer Date 4-2-81

(This space for State Use)

APPROVED BY [Signature] TITLE SUPERVISOR, DISTRICT II DATE MAY 06 1981

CONDITIONS OF APPROVAL, IF ANY:

Cement must be circulated to surface behind 13 3/8" + 8 5/8" casing

Notify N.M.O.C.C. in sufficient time to witness cementing the 8 5/8" casing

**N<sup>o</sup> MEXICO OIL CONSERVATION COMMISS**  
**WELL LOCATION AND ACREAGE DEDICATION PLAT**

Form C-102  
 Supersedes C-128  
 Effective 1-1-65

All distances must be from the outer boundaries of the Section.

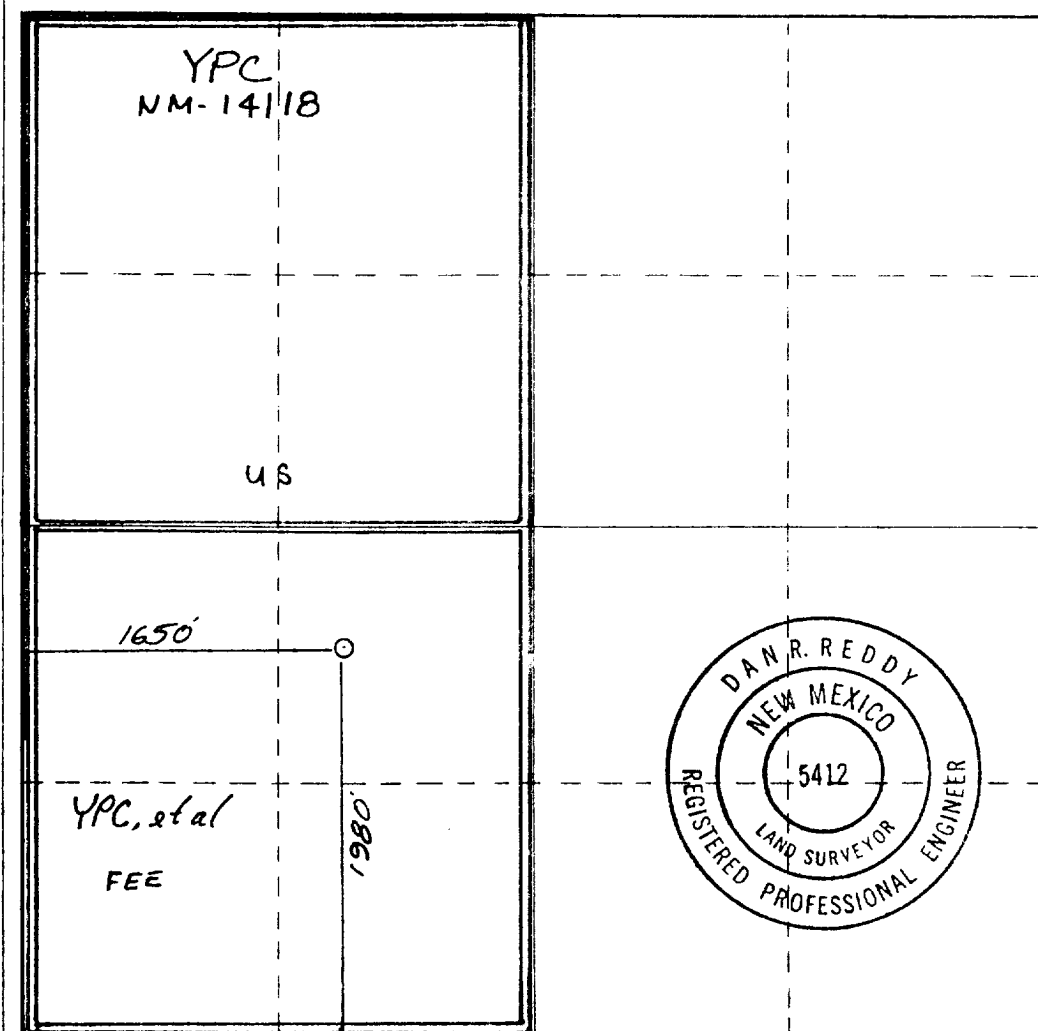
Operator <b>YATES PETROLEUM CORPORATION</b>			Lease <b>Emma QE Com</b>		Well No. <b>1</b>
Unit Letter <b>K</b>	Section <b>22</b>	Township <b>19 South</b>	Range <b>24 East</b>	County <b>Eddy</b>	
Actual Footage Location of Well:					
<b>1980</b> feet from the <b>South</b> line and		<b>1650</b> feet from the <b>West</b> line			
Ground Level Elev. <b>3681.</b>	Producing Formation <b>MORROW</b>	Pool <b>Under Morrow HOAGTANK</b>	Dedicated Acreage: <b>320</b>		

1. Outline the acreage dedicated to the subject well by colored pencil or hachure marks on the plat below.
2. If more than one lease is dedicated to the well, outline each and identify the ownership thereof (both as to working interest and royalty).
3. If more than one lease of different ownership is dedicated to the well, have the interests of all owners been consolidated by communitization, unitization, force-pooling, etc?

☒ Yes    ☐ No    If answer is "yes," type of consolidation COMMUNITIZATION

If answer is "no," list the owners and tract descriptions which have actually been consolidated. (Use reverse side of this form if necessary.) \_\_\_\_\_

No allowable will be assigned to the well until all interests have been consolidated (by communitization, unitization, forced-pooling, or otherwise) or until a non-standard unit, eliminating such interests, has been approved by the Commission.



**CERTIFICATION**

I hereby certify that the information contained herein is true and complete to the best of my knowledge and belief.

*Gliserio Rodriguez*  
 Name

**GLISERIO RODRIGUEZ**  
 Location

**GEOGRAPHER**  
 Company

**YATES PETROLEUM CORP.**  
 Date

**4-8-81**

I hereby certify that the well location shown on this plat was plotted from field notes of actual surveys made by me or under my supervision, and that the same is true and correct to the best of my knowledge and belief.

Date Surveyed

**March 18, 1981**

Registered Professional Engineer and/or Land Surveyor

*Dan R. Reddy*

Certificate No.

**NM PE&LS #5412**

0 330 660 990 1320 1650 1980 2310 2640 2000 1500 1000 500 0

Rotating head if necessary  
2" Fill up Line

ROTATING  
BOP  
2000 psi

Flowline

ANNULAR BOP

(Hydrill)

EXHIBIT B

900

PIPE RAMS

Shaffer 10" Series 900

900

Hydraulically Operated B.O.P.'s

BLIND  
RAMS

900

Check Valve

Steel  
Valve

4' Inch Line

Choke  
Manifo

Choke  
Manifo

2" Inch Kill  
Line

900

Casinghead or Bradenhead

THE FOLLOWING CONSTITUTE MINIMUM BLOWOUT PREVENTER REQUIREMENTS

1. All preventers to be hydraulically operated with secondary manual controls installed prior to drilling out from under casing.
2. Choke outlet to be a minimum of 4" diameter.
3. Kill line to be of all steel construction of 2" minimum diameter.
4. All connections from operating manifolds to preventers to be all steel. hole or tube a minimum of one inch in diameter.
5. The available closing pressure shall be at least 15% in excess of that required with sufficient volume to operate the B.O.P.'s.
6. All connections to and from preventer to have a pressure rating equivalent to that of the B.O.P.'s.
7. Inside blowout preventer to be available on rig floor.
8. Operating controls located a safe distance from the rig floor.
9. Hole must be kept filled on trips below intermediate casing. Operator not responsible for blowouts resulting from not keeping hole full.
10. D. P. float must be installed and used below zone of first gas intrusion.