

All distances must be from the outer boundaries of the Section.

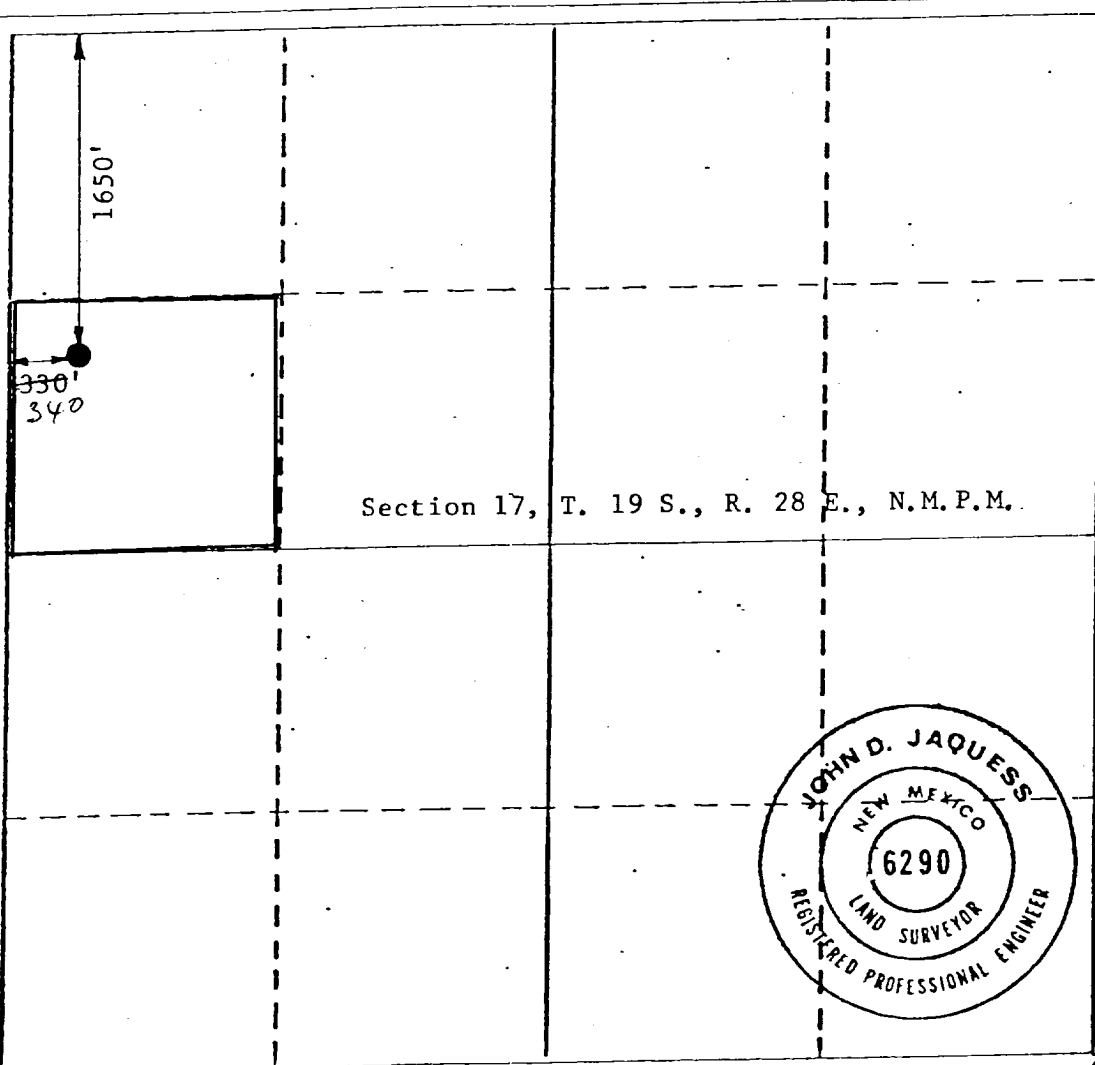
Operator FLYNN OIL FIELD SERVICE		Lease Warren State		Well No. 2-Y
Harbor Oil Company				
Unit Letter E	Section 17	Township 19 South	Range 28 East	County Eddy
Actual Footage Location of Well: 330 340 feet from the West line and 1650 feet from the North line				
Ground Level Elev. 3526	Producing Formation GRAYBURG	Pool MILLMAN Hg.	Dedicated Acreage: 40 Acres	

1. Outline the acreage dedicated to the subject well by colored pencil or hatchure marks on the plat below.
2. If more than one lease is dedicated to the well, outline each and identify the ownership thereof (both as to working interest and royalty).
3. If more than one lease of different ownership is dedicated to the well, have the interests of all owners been consolidated by communitization, unitization, force-pooling, etc?

☐ Yes ☐ No If answer is "yes," type of consolidation _____

If answer is "no," list the owners and tract descriptions which have actually been consolidated. (Use reverse side of this form if necessary.) _____

No allowable will be assigned to the well until all interests have been consolidated (by communitization, unitization, forced-pooling, or otherwise) or until a non-standard unit, eliminating such interests, has been approved by the Division.



CERTIFICATION

I hereby certify that the information contained herein is true and complete to the best of my knowledge and belief.

Name **Harvey T. Flynn**

Position **Partner**

Company **FLYNN OIL FIELD SERVICE
HARBOR OIL CO.**

Date **2/27/81**

7/16/81

I hereby certify that the well location shown on this plat was plotted from field notes of actual surveys made by me or under my supervision, and that the same is true and correct to the best of my knowledge and belief.

Date Surveyed

February 20, 1981

Registered Professional Engineer
and/or Land Surveyor

John D. Jaquess
John D. Jaquess, P.E. & L.S.

Certificate No.

6290