

Submit to Appropriate
District Office
State Lease - 6 copies
Fee Lease - 5 copies

State of New Mexico
E. Minerals and Natural Resources Department

Form C-101
Revised 1-1-89

OIL CONSERVATION DIVISION

P.O. Box 2088
Santa Fe, New Mexico 87504-2088

DISTRICT I
P.O. Box 1980, Hobbs, NM 88240

DISTRICT II
P.O. Drawer DD, Artesia, NM 88210

DISTRICT III
1000 Rio Brazos Rd., Aztec, NM 87410

APR 12 '90

API NO. (assigned by OCD on New Wells)

30-015-23890

5. Indicate Type of Lease

STATE ☐

FEE ☒

6. State Oil & Gas Lease No.

APPLICATION FOR PERMIT TO DRILL, DEEPEN, OR PLUG BACK

1a. Type of Work:

DRILL ☐

RE-ENTER ☒

DEEPEN ☐

PLUG BACK ☐

b. Type of Well:

OIL
WELL ☒

GAS
WELL ☐

OTHER ☐

SINGLE
ZONE ☐

MULTIPLE
ZONE ☐

2. Name of Operator

Yates Petroleum Corporation

3. Address of Operator

105 South Fourth Street, Artesia, New Mexico 88210

4. Well Location

Unit Letter I : 660 Feet From The East Line and 1980 Feet From The South Line

Section 11

Township 20 South

Range 24 East

NMPM

Eddy County

7. Lease Name or Unit Agreement Name

Sara "AHA" Com.

8. Well No.

1

9. Pool name or Wildcat

South Dagger Draw Upper Penn

10. Proposed Depth

8000'

11. Formation

Canyon

12. Rotary or C.T.

Rotary

13. Elevations (Show whether DF, RT, GR, etc.)

3608'

14. Kind & Status Plug. Bond

Blanket

15. Drilling Contractor

Undesignated

16. Approx. Date Work will start

ASAP

17.

PROPOSED CASING AND CEMENT PROGRAM

SIZE OF HOLE	SIZE OF CASING	WEIGHT PER FOOT	SETTING DEPTH	SACKS OF CEMENT	EST. TOP
17 1/2"	13-3/8" in place	48# H-40	415'	575 sx	Circulated
11"	8-5/8" in place	24# J-55	1205'	400 sx	Circulated
7 7/8"	5-1/2" in place	17# N-80	8042'	800 sx	

This well was originally drilled by Ralph Nix as their Debbie #1. It was spudded 9-12-81 and drilled to a total depth of 9546'. Was plugged and abandoned 11-24-86. Yates plans to re-enter the well. We propose to rig up a pulling and reverse unit and drill out plugs inside existing 5 1/2" casing to 8,000'. Then, plan to perforate, acidize and test Canyon formation.

APPROVAL VALID FOR 180 DAYS
PERMIT EXPIRES 11/2/90
UNLESS DRILLING UNDERWAY

IN ABOVE SPACE DESCRIBE PROPOSED PROGRAM: IF PROPOSAL IS TO DEEPEN OR PLUG BACK, GIVE DATA ON PRESENT PRODUCTIVE ZONE AND PROPOSED NEW PRODUCTIVE ZONE. GIVE BLOWOUT PREVENTER PROGRAM, IF ANY.

I hereby certify that the information above is true and complete to the best of my knowledge and belief.

SIGNATURE

Ken Beardemphl

TITLE

Landman

DATE

4-12-90

(505)

TYPE OR PRINT NAME

Ken Beardemphl

TELEPHONE NO. 748-1471

(This space for State Use) ORIGINAL SIGNED BY

MIKE WILLIAMS

APPROVED BY

SUPERVISOR, DISTRICT II

TITLE

DATE

MAY 2 1990

CONDITIONS OF APPROVAL, IF ANY: Pending NSL Approval

Submit to Appropriate
District Office
State Lease - 4 copies
Fee Lease - 3 copies

State of New Mexico
Energy, Minerals and Natural Resources Department

Form C-102
Revised 1-1-89

OIL CONSERVATION DIVISION

DISTRICT I
P.O. Box 1980, Hobbs, NM 88240

P.O. Box 2088
Santa Fe, New Mexico 87504-2088

DISTRICT II
P.O. Drawer DD, Artesia, NM 88210

DISTRICT III
1000 Rio Brazos Rd., Aztec, NM 87410

WELL LOCATION AND ACREAGE DEDICATION PLAT

All Distances must be from the outer boundaries of the section

Operator Yates Petroleum Corporation			Lease Sara "AHA" Com.		Well No. 1
Unit Letter I	Section 11	Township 20 South	Range 24 East	County NMPM Eddy	
Actual Footage Location of Well: 660 feet from the East line and 1980 feet from the South line					
Ground level Elev. 3608'		Producing Formation Cisco Canyon		Pool South Dagger Draw-Upper Penn	Dedicated Acreage: 320 Acres

1. Outline the acreage dedicated to the subject well by colored pencil or hatchure marks on the plat below.
2. If more than one lease is dedicated to the well, outline each and identify the ownership thereof (both as to working interest and royalty).
3. If more than one lease of different ownership is dedicated to the well, have the interest of all owners been consolidated by communitization, unitization, force-pooling, etc.?
☒ Yes ☐ No If answer is "yes" type of consolidation communitization
If answer is "no" list the owners and tract descriptions which have actually been consolidated. (Use reverse side of this form if necessary.)
No allowable will be assigned to the well until all interests have been consolidated (by communitization, unitization, forced-pooling, or otherwise) or until a non-standard unit, eliminating such interest, has been approved by the Division.

OPERATOR CERTIFICATION

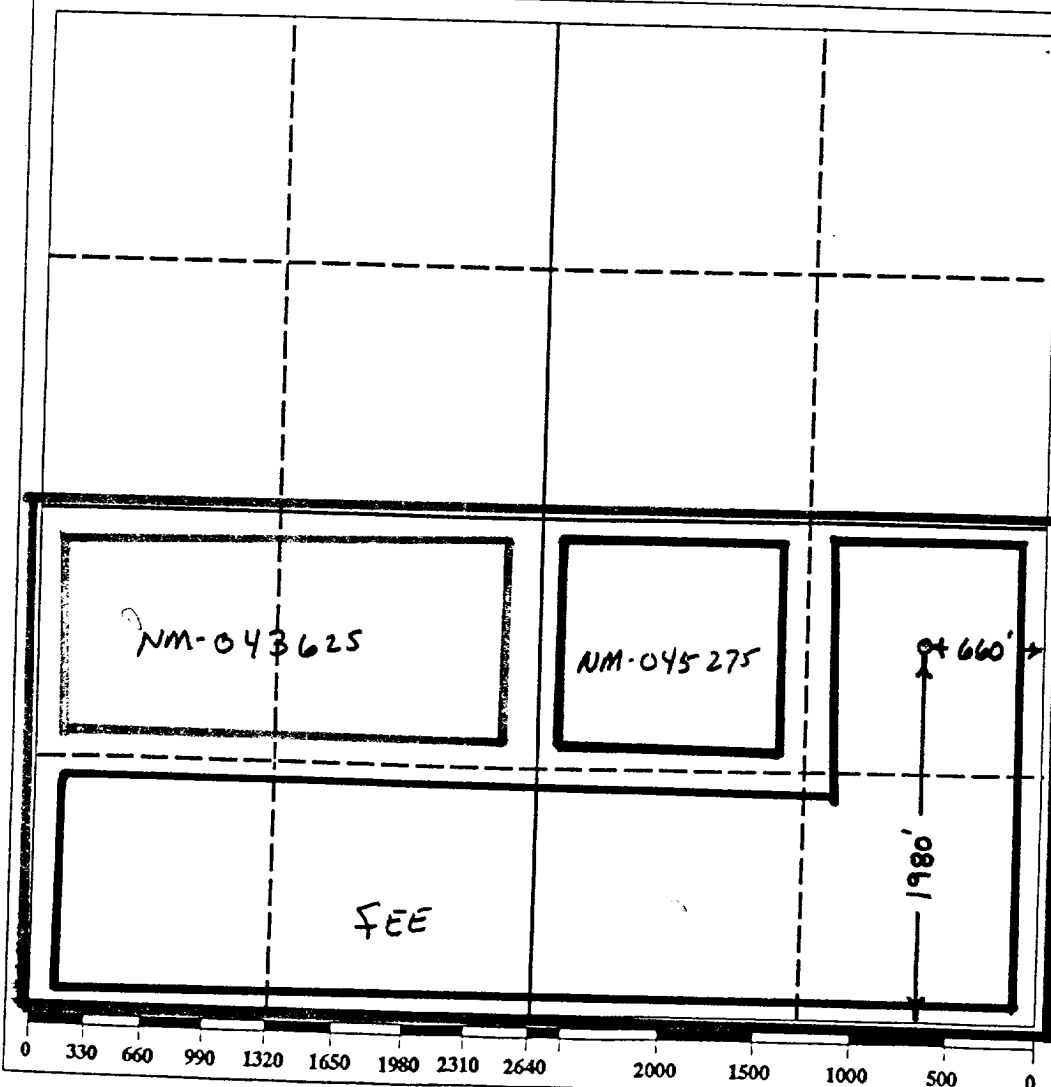
I hereby certify that the information contained herein is true and complete to the best of my knowledge and belief.

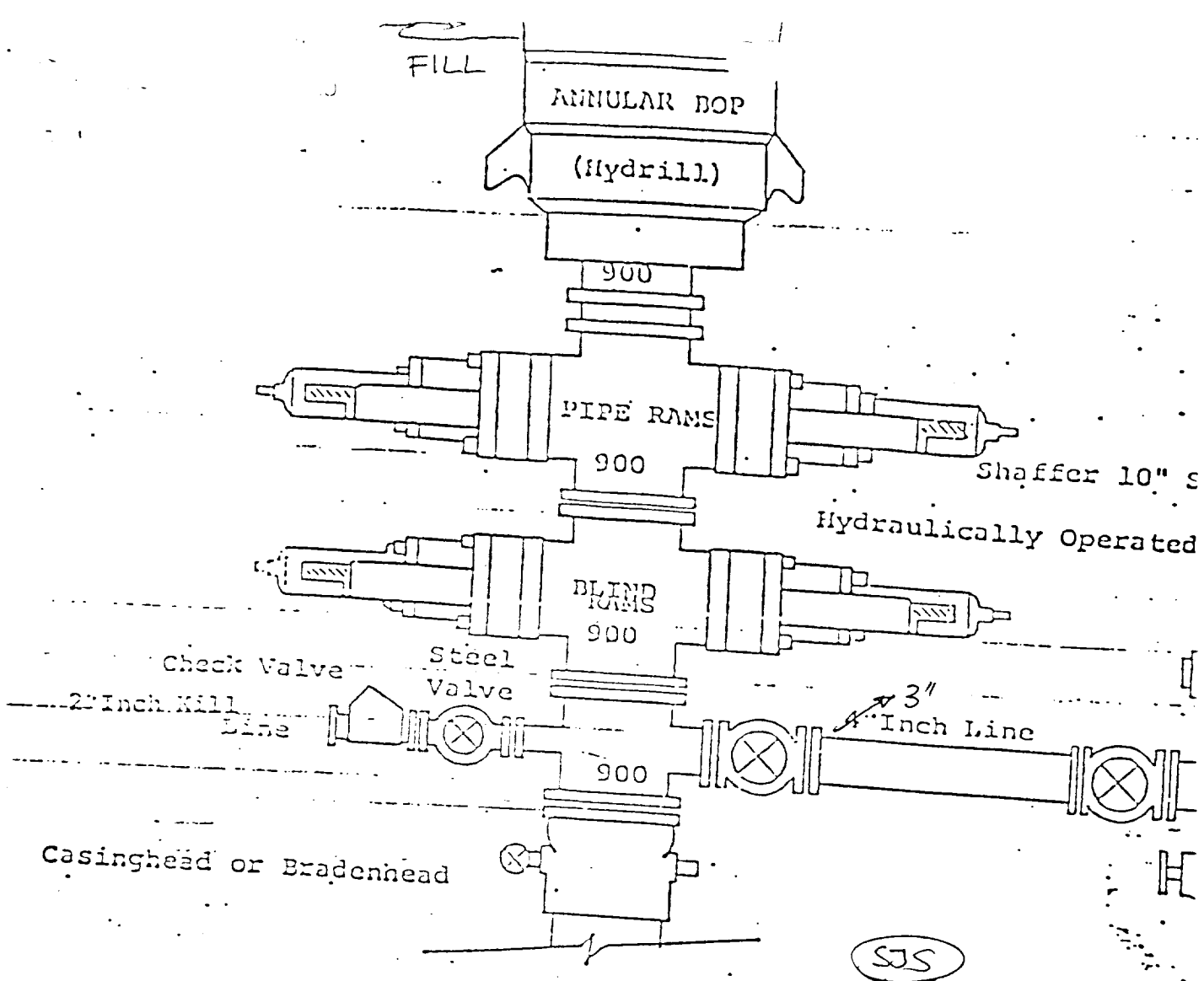
Signature
Ken Beardemphl
Printed Name
Ken Beardemphl
Position
Landman
Company
Yates Petroleum Corporation
Date
April 12, 1990

SURVEYOR CERTIFICATION

I hereby certify that the well location shown on this plat was plotted from field notes of actual surveys made by me or under my supervision, and that the same is true and correct to the best of my knowledge and belief.

Date Surveyed
Signature & Seal of Professional Surveyor
Refer to original plat.
Certificate No.





THE FOLLOWING CONSTITUTE MINIMUM BLOWOUT PREVENTER REQUIREMENTS

1. All preventers to be hydraulically operated with secondary manual installed prior to drilling out from under casing.
2. Choke outlet to be a minimum of 3" diameter.
3. Kill line to be of all steel construction of 2" minimum diameter.
4. All connections from operating manifolds to preventers to be all hole or tube a minimum of one inch in diameter.
5. The available closing pressure shall be at least 15% in excess required with sufficient volume to operate the B.O.P.'s.
6. All connections to and from preventer to have a pressure rating to that of the B.O.P.'s.
7. Inside blowout preventer to be available on rig floor.
8. Operating controls located a safe distance from the rig floor.
9. Hole must be kept filled on trips below intermediate casing.

EXHIBIT B