

UNITED STATES
DEPARTMENT OF THE INTERIOR
GEOLOGICAL SURVEY

N.M.O.C.D. COPY

30-015-23915

5. LEASE DESIGNATION AND SERIAL NO.

LC-029392 (B)

6. IF INDIAN, ALLOTTEE OR TRIBE NAME

7. UNIT AGREEMENT NAME

8. FARM OR RANCH NAME

Hinkle Federal

9. WELL NO.

15-X

10. FIELD AND POOL, OR WILDCAT

Shugart X 5A Q-2

11. SEC., T., R., M., OR BLK.
AND SURVEY OR AREA

Sec. 26 T 18S R31E

12. COUNTY OR PARISH

Eddy

13. STATE

N.M.

APPLICATION FOR PERMIT TO DRILL, DEEPEN, OR PLUG BACK

1a. TYPE OF WORK

DRILL ☒DEEPEN ☐PLUG BACK ☐

b. TYPE OF WELL

OIL
WELL ☒GAS
WELL ☐

OTHER

SINGLE
ZONE ☐MULTIPLE
ZONE ☐

2. NAME OF OPERATOR

Westall - Mask

3. ADDRESS OF OPERATOR

P.O. Drawer 1477, Roswell, New Mexico 88201

4. LOCATION OF WELL (Report location clearly and in accordance with any State requirements.)*

At surface

990 FEL and 2310 FNL

At proposed prod. zone

14. DISTANCE IN MILES AND DIRECTION FROM NEAREST TOWN OR POST OFFICE*

SEP 11 1981

O.C.D.

ARTESIA, OFFICE

15. DISTANCE FROM PROPOSED*

LOCATION TO NEAREST
PROPERTY OR LEASE LINE, FT.
(Also to nearest drlg. unit line, if any)

990'

16. NO. OF ACRES IN LEASE

160

17. NO. OF ACRES ASSIGNED
TO THIS WELL

40

18. DISTANCE FROM PROPOSED LOCATION*

TO NEAREST WELL, DRILLING, COMPLETED,
OR APPLIED FOR, ON THIS LEASE, FT.

1320

19. PROPOSED DEPTH

4200

20. ROTARY OR CABLE TOOLS

Rotary

21. ELEVATIONS (Show whether DF, RT, GR, etc.)

22. APPROX. DATE WORK WILL START*

9-81

PROPOSED CASING AND CEMENTING PROGRAM

SIZE OF HOLE	SIZE OF CASING	WEIGHT PER FOOT	SETTING DEPTH	QUANTITY OF CEMENT
11"	8 5/8"	20#	650'	Approx. 250 Scks. to circ.
7 7/8"	4 1/2"	9.5#	4,200	Approx. 400 Scks. to circ.

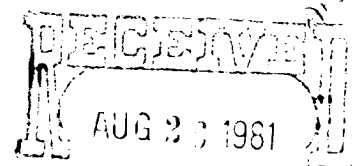
Blowout Preventer will be Double Manual (Shaeffer) B.O.P. with 3000# test.

Mud Program - We will use fresh water to 650', then use salt gel to
total depth

No anticipated abnormal pressure or temperatures.

Anticipated starting date will be September 1981.

Tops" Yates 2600' Queen 3400' Grayburg 4000'

OIL & GAS
U.S. GEOLOGICAL SURVEY
ROSWELL, NEW MEXICO

IN ABOVE SPACE DESCRIBE PROPOSED PROGRAM: If proposal is to deepen or plug back, give data on present productive zone and proposed new productive zone. If proposal is to drill or deepen directionally, give pertinent data on subsurface locations and measured and true vertical depths. Give blowout preventer program, if any.

24.

Richard E. Barton

Personal Representative 8-24-81

SIGNED

TITLE

for the Estate of Jack Mask

(This space for Federal or State office use)

PERMIT NO.

APPROVED

APPROVAL DATE

APPROVED BY

(Orig. Sgd.) GEORGE H. STEWART

TITLE

DATE

CONDITIONS OF APPROVAL, IF ANY

SEP 9 1981

FOR

JAMES A. GILLHAM
DISTRICT SUPERVISOR

See Instructions On Reverse Side

NEW MEXICO OIL CONSERVATION COMMISSION
WELL LOCATION AND ACREAGE DEDICATION PLAT

Form O-102
Supersedes O-101
Effective 1-1-65

All distances must be from the outer boundaries of the Section

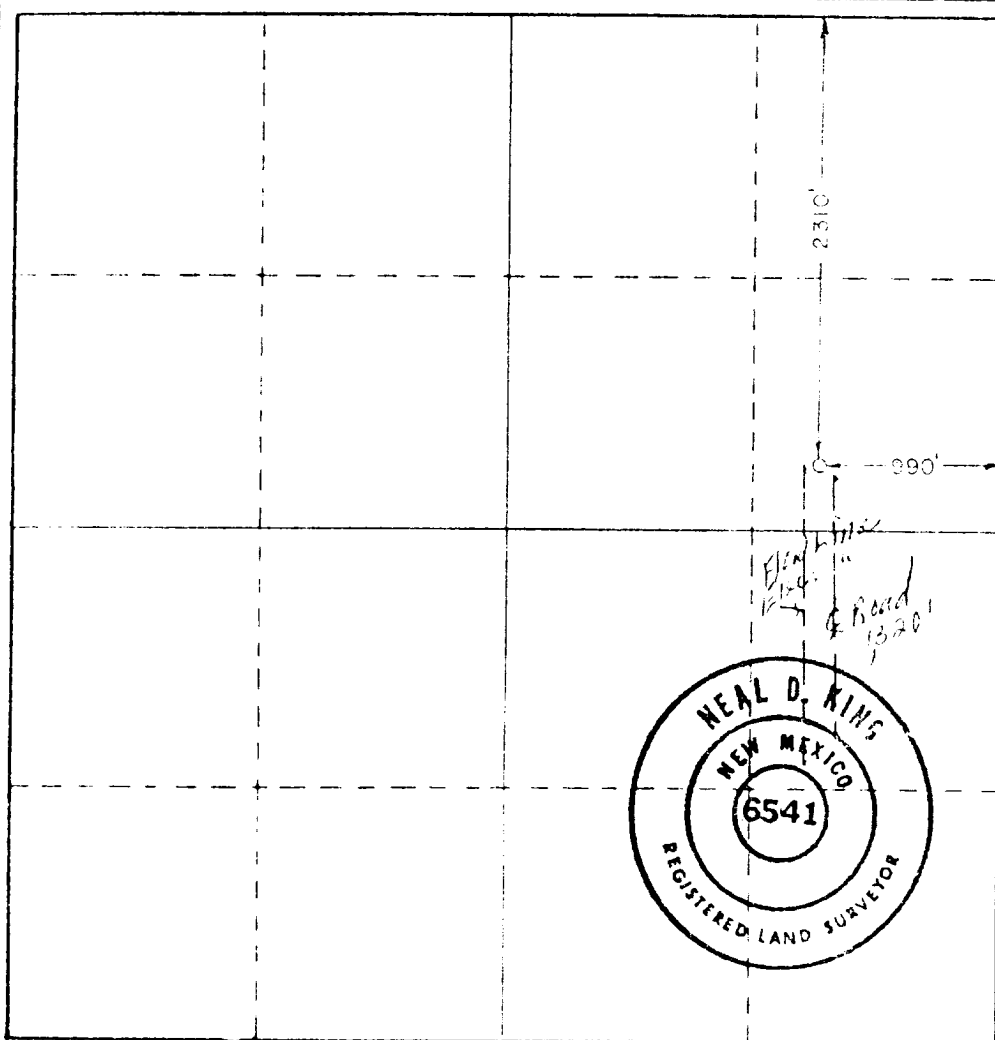
Well No. 25		Section B		Range 31 E.		Township 19 S.	
Producing Formation GRAYBURG		Foot 2310		North 40		East 40	

- Outline the acreage dedicated to the subject well by colored pencil or hatchure marks on the plat below.
- If more than one lease is dedicated to the well, outline each and identify the ownership thereof (both as to working interest and royalty).
- If more than one lease of different ownership is dedicated to the well, have the interests of all owners been consolidated by communitization, unitization, force-pooling, etc?

☐ Yes ☐ No If answer is "yes," type of consolidation _____

If answer is "no," list the owners and tract descriptions which have actually been consolidated. (Use reverse side of this form if necessary.) _____

No allowable will be assigned to the well until all interests have been consolidated (by communitization, unitization, forced-pooling, or otherwise) or until a non-standard unit, eliminating such interests, has been approved by the Commission.



CERTIFICATION

I hereby certify that the information contained herein is true and complete to the best of my knowledge and belief.

Name Richard E. Barton
 Position Personal Representative for the Estate of Jack Westall - Mask
 Date 8-24-81

I hereby certify that the well location shown on this plat was plotted from field notes of actual surveys made by me or under my supervision, and that the same is true and correct to the best of my knowledge and belief.

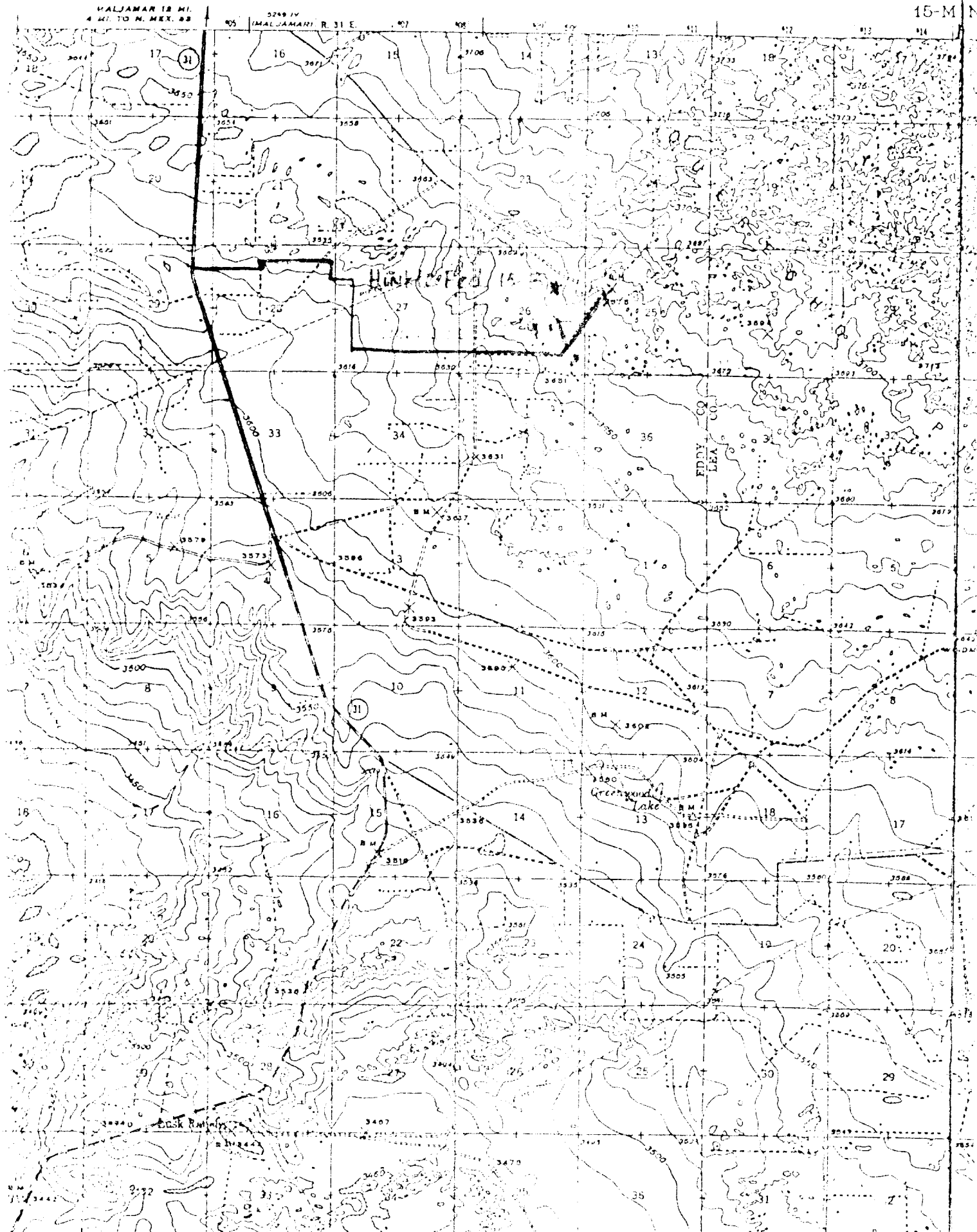
August 1, 1981
 Date Surveyed

Registered Professional Engineer and Land Surveyor

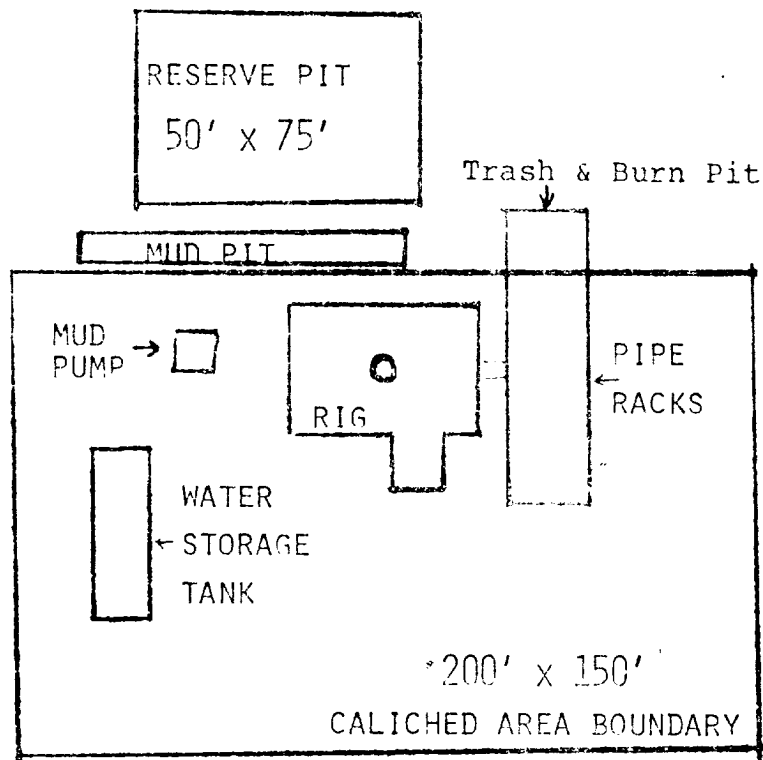
Neal D. King
 Certificate No. _____

Schedule

CLAYTON PA
15-M N



Schedule - 2



ROAD

SCALE 1" = 50'

DEVELOPMENT PLAN FOR SURFACE USE

WESTALL AND MASK, ROSWELL NM 88201