

STATE OF NEW MEXICO  
OIL AND MINERALS DEPARTMENT

L CONSERVATION DIVISION  
P. O. BOX 2088  
SANTA FE, NEW MEXICO 87501

Form C-101  
Revised 10-1-78

30-015-73746

NO. OF COPIES RECEIVED	
DISTRIBUTION	
SANTA FE	1
FILE	1
U.S.G.S.	2
LAND OFFICE	1
OPERATOR	1

RECEIVED

SEP 15 1981

O. C. D.

ARTESIA, OFFICE

APPLICATION FOR PERMIT TO DRILL, DEEPEN, OR PLUG BACK

Type of Work

Type of Well

DRILL ☒

DEEPEN ☐

PLUG BACK ☐

Gas Well ☐

GAS WELL ☒

OTHER

SINGLE ZONE ☐

MULTIPLE ZONE ☐

Name of Operator

Yates Petroleum Corporation

Address of Operator

207 South 4th Street, Artesia, New Mexico 88210

Location of Well

UNIT LETTER 0

LOCATED 660

FEET FROM THE South

LINE

1980

FEET FROM THE

East

LINE OF SEC. 14

TWP. 19s

RGE. 23e

RANGE

17. County

Eddy

18. Field and Pool, or Wildcat

Wildcat Under. Morrow

19. Proposed Depth

8650

19A. Formation

Morrow

20. Rotary or C.T.

Rotary

Elevations (Show whether DF, RT, etc.)

3883.5 GL

21A. Kind & Status Plug. Bond

Blanket

21B. Drilling Contractor

Ard #6

22. Approx. Date Work will start

As soon as approved.

PROPOSED CASING AND CEMENT PROGRAM

SIZE OF HOLE	SIZE OF CASING	WEIGHT PER FOOT	SETTING DEPTH	SACKS OF CEMENT	EST. TOP
17 1/2"	13 3/8"	48#	approx. 200	200 sx.	circulate
12 1/4"	8 5/8"	24#	approx. * 750/450	400 sx.	circulate
7 7/8"	5 1/2" or 4 1/2"	15.5 - 17# 10.5 - 11.6#	TD	400 sx.	

We propose to drill and test the Mississippian lime and intermediate horizons. Will set approximately 200' surface casing to shut off gravel and caving, and will set intermediate casing at least 100' below the Artesian water zone, both strings to be circulated. If commercial will run 5 1/2" or 4 1/2" and cement with at least 600 ft. of cover.

PROPOSED PROGRAM: FW gel and LCM to \* 1450', water to 5700', starch-driskpak to 7900'  
SW gel, starch drispac to TD.

TOP PROGRAM: BOP's and hydril on 8 5/8" casing and tested, pipe rams tested daily, blind rams on trips; Yellow Jacket, pit level control and flow sensor on at 5200'.

WAS NOT DEDICATED.

APPROVAL VALID FOR 180 DAYS  
PERMIT EXPIRES 3-17-82  
UNLESS DRILLING UNDERWAY

LOVE SPACE DESCRIBE PROPOSED PROGRAM; IF PROPOSAL IS TO DEEPEN OR PLUG BACK, GIVE DATA ON PRESENT PRODUCTIVE ZONE AND PROPOSED NEW PROGRAM. GIVE BLOWOUT PREVENTER PROGRAM, IF ANY.

I hereby certify that the information above is true and complete to the best of my knowledge and belief.

*[Signature]*

Title Regulatory Manager

Date 9-11-81

(This space for State Use)

APPROVED BY *[Signature]*

TITLE SUPERVISOR, DISTRICT II

DATE SEP 17 1981

REMARKS OF APPROVAL, IF ANY:

\* as noted above

Cement must be circulated to surface behind 13 3/8" & 8 5/8" casing

Notify N.M.O.C.C. in sufficient time to witness cementing.

File 8 5/8" casing

NEW MEXICO OIL CONSERVATION COMMISSION  
WELL LOCATION AND ACREAGE DEDICATION PLAT

Form C-102  
Supersedes C-128  
Effective 1-1-65

All distances must be from the outer boundaries of the Section.

Operator <b>YATES PETROLEUM CORPORATION</b>			Lease <b>Triangle Ranch RA State</b>		Com <b>1</b>	Well No. <b>1</b>
Unit Letter <b>O</b>	Section <b>14</b>	Township <b>19 South</b>	Range <b>23 East</b>	County <b>Eddy</b>		

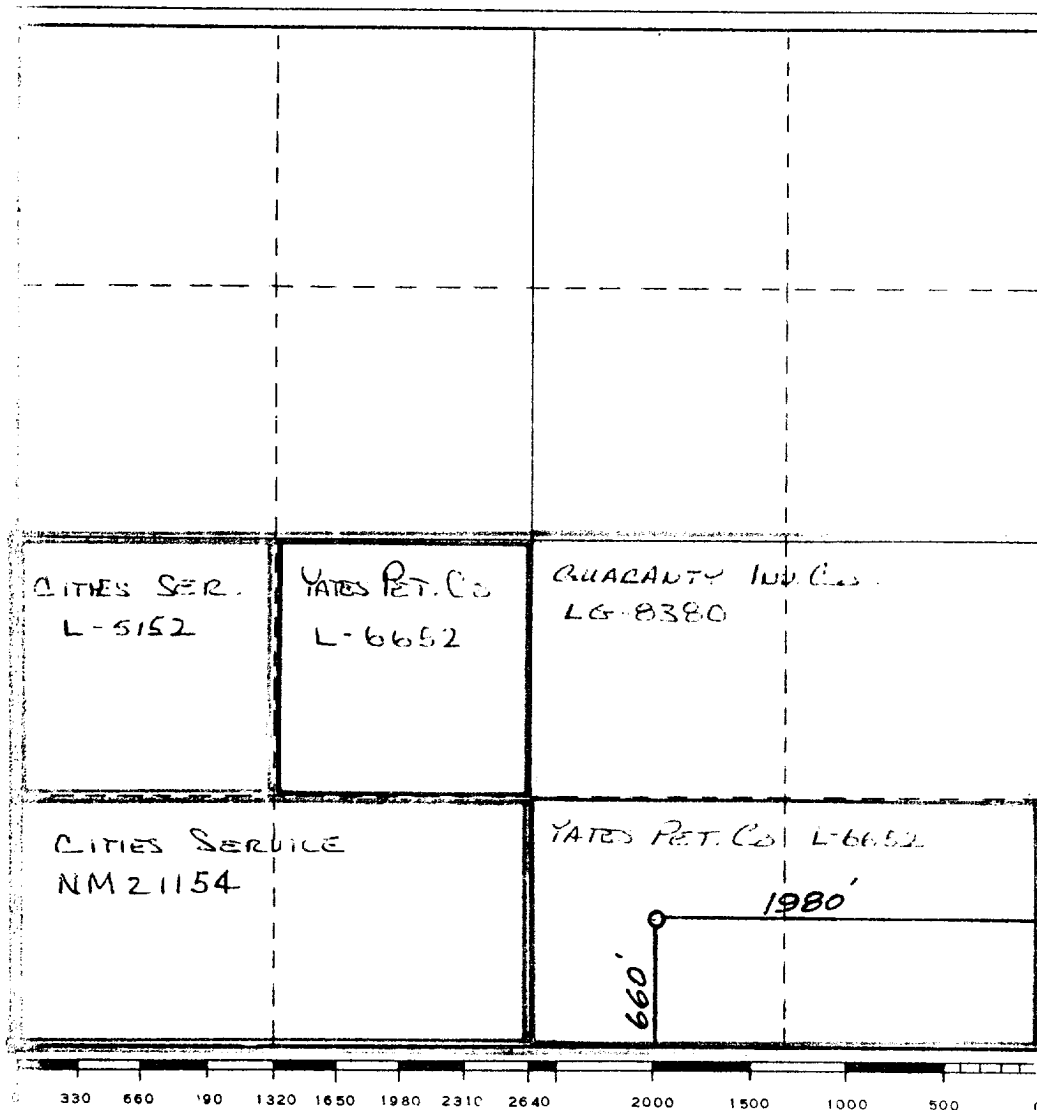
Actual Footage Location of Well:  
**660'** feet from the **South** line and **1980** feet from the **East** line  
 Ground Level Elev. **3883.5** Producing Formation **MORROW** Pool **UNDES MORROW** Dedicated Acreage: **32.0** Acres

1. Outline the acreage dedicated to the subject well by colored pencil or hatchure marks on the plat below.
2. If more than one lease is dedicated to the well, outline each and identify the ownership thereof (both as to working interest and royalty).
3. If more than one lease of different ownership is dedicated to the well, have the interests of all owners been consolidated by communitization, unitization, force-pooling, etc?

☒ Yes ☐ No If answer is "yes," type of consolidation COMMUNITIZATION

If answer is "no," list the owners and tract descriptions which have actually been consolidated. (Use reverse side of this form if necessary.)

No allowable will be assigned to the well until all interests have been consolidated (by communitization, unitization, forced-pooling, or otherwise) or until a non-standard unit, eliminating such interests, has been approved by the Commission.



CERTIFICATION

I hereby certify that the information contained herein is true and complete to the best of my knowledge and belief.

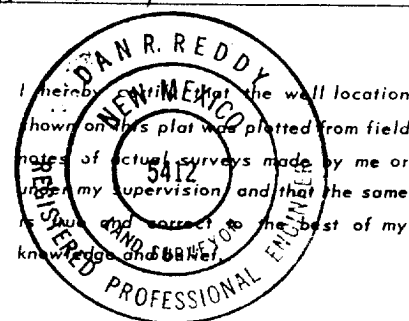
*Gliserio Rodriguez*  
Name

GLISERIO RODRIGUEZ  
Position

YATES PETROLEUM CORP.  
Company

Aug 23  
Date

8-28-81



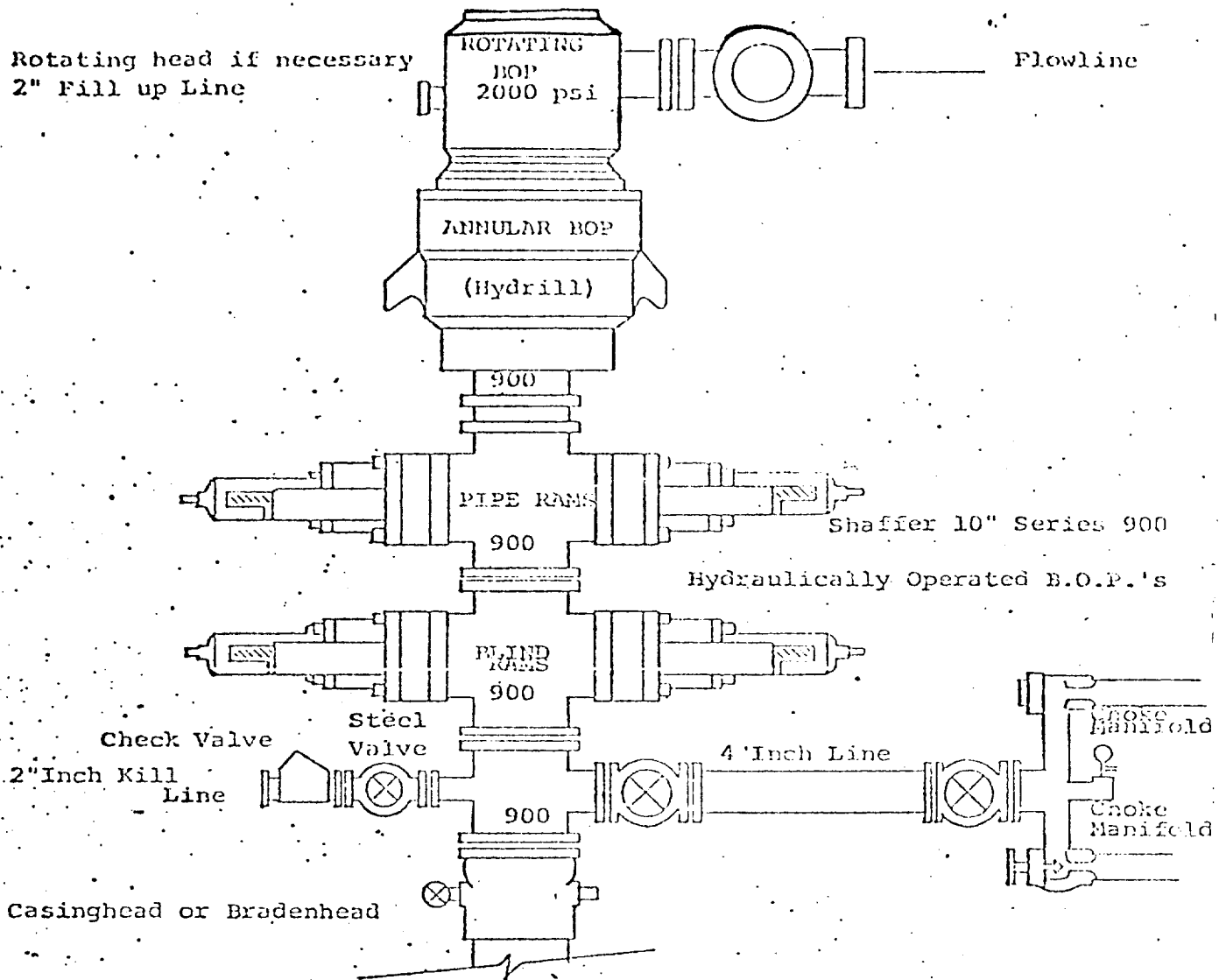
Date Surveyed

August 23, 1981

Registered Professional Engineer  
and/or Land Surveyor

*Dan R. Reddy*  
Certificate No.

NMPE&LS #5412



THE FOLLOWING CONSTITUTE MINIMUM BLOWOUT PREVENTER REQUIREMENTS

1. All preventers to be hydraulically operated with secondary manual controls installed prior to drilling out from under casing.
2. Choke outlet to be a minimum of 4" diameter.
3. Kill line to be of all steel construction of 2" minimum diameter.
4. All connections from operating manifolds to preventers to be all steel. hole or tube a minimum of one inch in diameter.
5. The available closing pressure shall be at least 15% in excess of that required with sufficient volume to operate the B.O.P.'s.
6. All connections to and from preventer to have a pressure rating equivalent to that of the B.O.P.'s.
7. Inside blowout preventer to be available on rig floor.
8. Operating controls located a safe distance from the rig floor.
9. Hole must be kept filled on trips below intermediate casing. Operator not responsible for blowouts resulting from not keeping hole full.
10. D. P. float must be installed and used below zone of first gas intrusion.