

AMENDED

**NEW MEXICO OIL CONSERVATION COMMISSION
WELL LOCATION AND ACREAGE DEDICATION PLAT**

Form C-122
Supersedes C-128
Effective 1-1-65

All distances must be from the outer boundaries of the Section

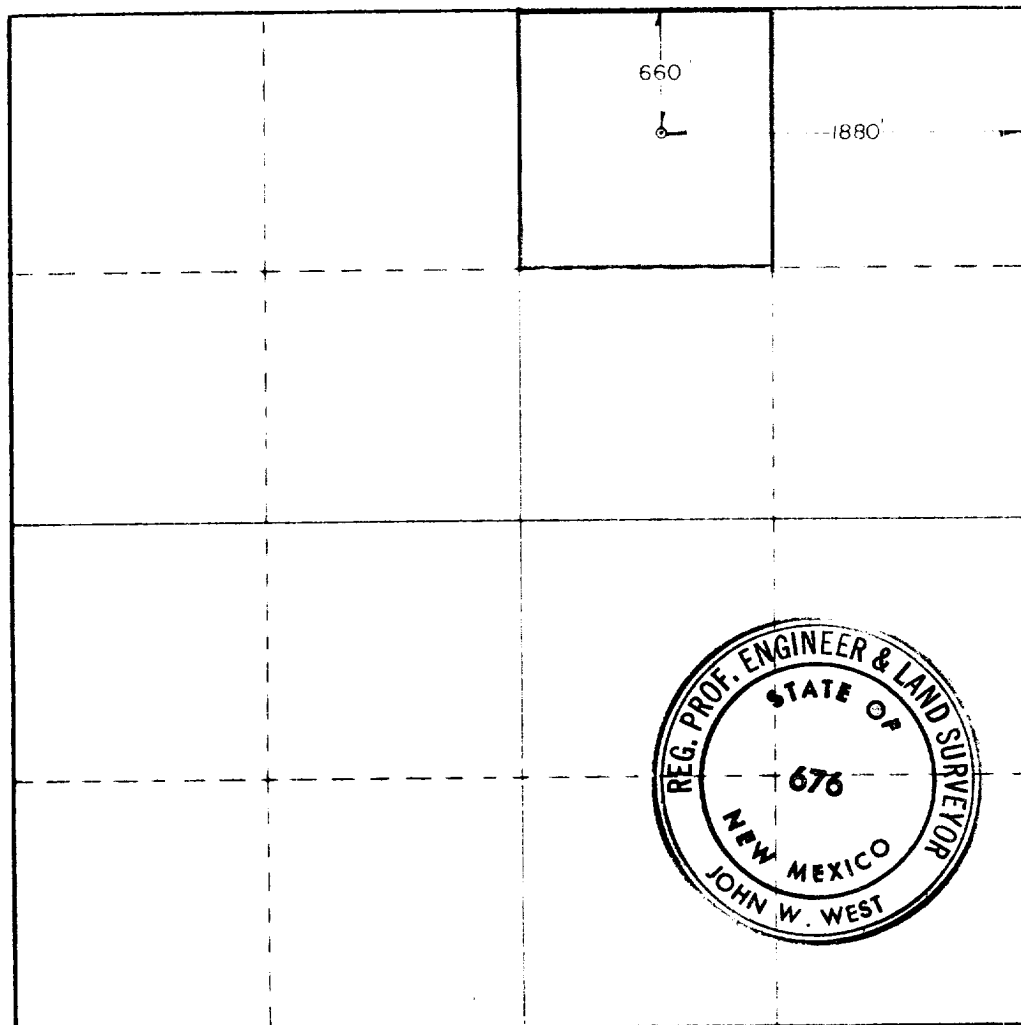
Operator THRESHOLD DEVELOPMENT COMPANY			Lease CONOCO 7 STATE		Well No. 8
Tract Letter B	Section 7	Township 19 South	Range 29 East	County Eddy	
Actual Plotage Location of Well: <div style="display: flex; justify-content: space-between;"> 660 feet from the North line and 1380 feet from the East line </div>					
Ground Level Elev. 3377.4	Producing Formation Grayburg	Pool Undes. E. Millman Queen-Grayburg		Estimated Acreage 40	

1. Outline the acreage dedicated to the subject well by colored pencil or hachure marks on the plat below.
2. If more than one lease is dedicated to the well, outline each and identify the ownership thereof (both as to working interest and royalty).
3. If more than one lease of different ownership is dedicated to the well, have the interests of all owners been consolidated by communitization, unitization, force-pooling, etc?

☒ Yes ☐ No If answer is "yes," type of consolidation Not Applicable

If answer is "no," list the owners and tract descriptions which have actually been consolidated. (Use reverse side of this form if necessary.) N/A

No allowable will be assigned to the well until all interests have been consolidated (by communitization, unitization, forced-pooling, or otherwise) or until a non-standard unit, eliminating such interests, has been approved by the Commission.



CERTIFICATION

I hereby certify that the information contained herein is true and complete to the best of my knowledge and belief.

Peggy A. Redman

Engineer Assistant

Threshold Development Co.

Date
January 12, 1982

I hereby certify that the well location shown on this plat was plotted from field notes of actual surveys made by me or under my supervision, and that the same is true and correct to the best of my knowledge and belief.

Date Surveyed
1 / 4/82

Registered Professional Engineer
in Land Surveying

John W. West

Certificate No. **JOHN W. WEST 676**

PATRICK A. ROMERO 6868
Ronald J. Eidson 3239

