

MEXICO OIL CONSERVATION COMMISSION
WELL LOCATION AND ACREAGE DEDICATION PLAT

Form C-102
 Supersedes C-128
 Effective 1-1-65

All distances must be from the outer boundaries of the Section.

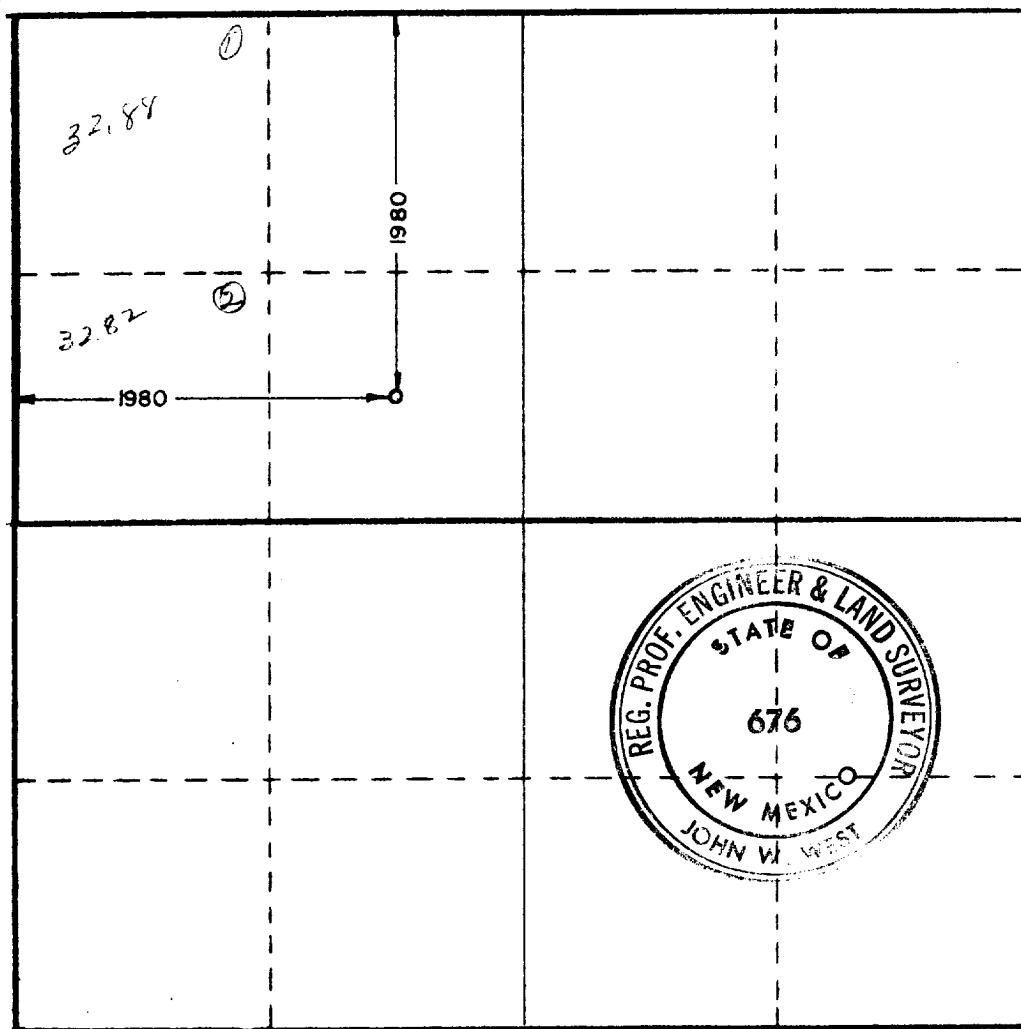
Operator Threshold Development Co.			Lease Conoco 7th State		Well No. 10
Unit Letter F	Section 7	Township 19 south	Range 29 east	County Eddy	
Actual Footage Location of Well: 1980 feet from the north line and 1980 feet from the west line					
Ground Level Elev. 3376.7	Producing Formation Morrow	Pool Undes. Turkey Track		Dedicated Acreage: 305.45 ⁷⁰ Acres	

1. Outline the acreage dedicated to the subject well by colored pencil or hachure marks on the plat below.
2. If more than one lease is dedicated to the well, outline each and identify the ownership thereof (both as to working interest and royalty).
3. If more than one lease of different ownership is dedicated to the well, have the interests of all owners been consolidated by communitization, unitization, force-pooling, etc?

☒ Yes ☐ No If answer is "yes," type of consolidation By Operating Agreement will be communitized upon establishment of production.

If answer is "no," list the owners and tract descriptions which have actually been consolidated. (Use reverse side of this form if necessary.) _____

No allowable will be assigned to the well until all interests have been consolidated (by communitization, unitization, forced-pooling, or otherwise) or until a non-standard unit, eliminating such interests, has been approved by the Commission.



CERTIFICATION

I hereby certify that the information contained herein is true and complete to the best of my knowledge and belief.

Name Peggy A. Redman
 Position Engineer Assistant
 Company Threshold Development Co.
 Date September 18, 1981

I hereby certify that the well location shown on this plat was plotted from field notes of actual surveys made by me or under my supervision, and that the same is true and correct to the best of my knowledge and belief.

Date Surveyed **9-15-80**

Registered Professional Engineer and/or Land Surveyor

Patrick A. Romero
 Certificate No. **JOHN W. WEST 676**
PATRICK A. ROMERO 6863
Ronald J. Eidson 3239

