

NEW MEXICO OIL CONSERVATION COMMISSION
WELL LOCATION AND ACREAGE DEDICATION PLAT

RECEIVED BY

AUG 08 1985

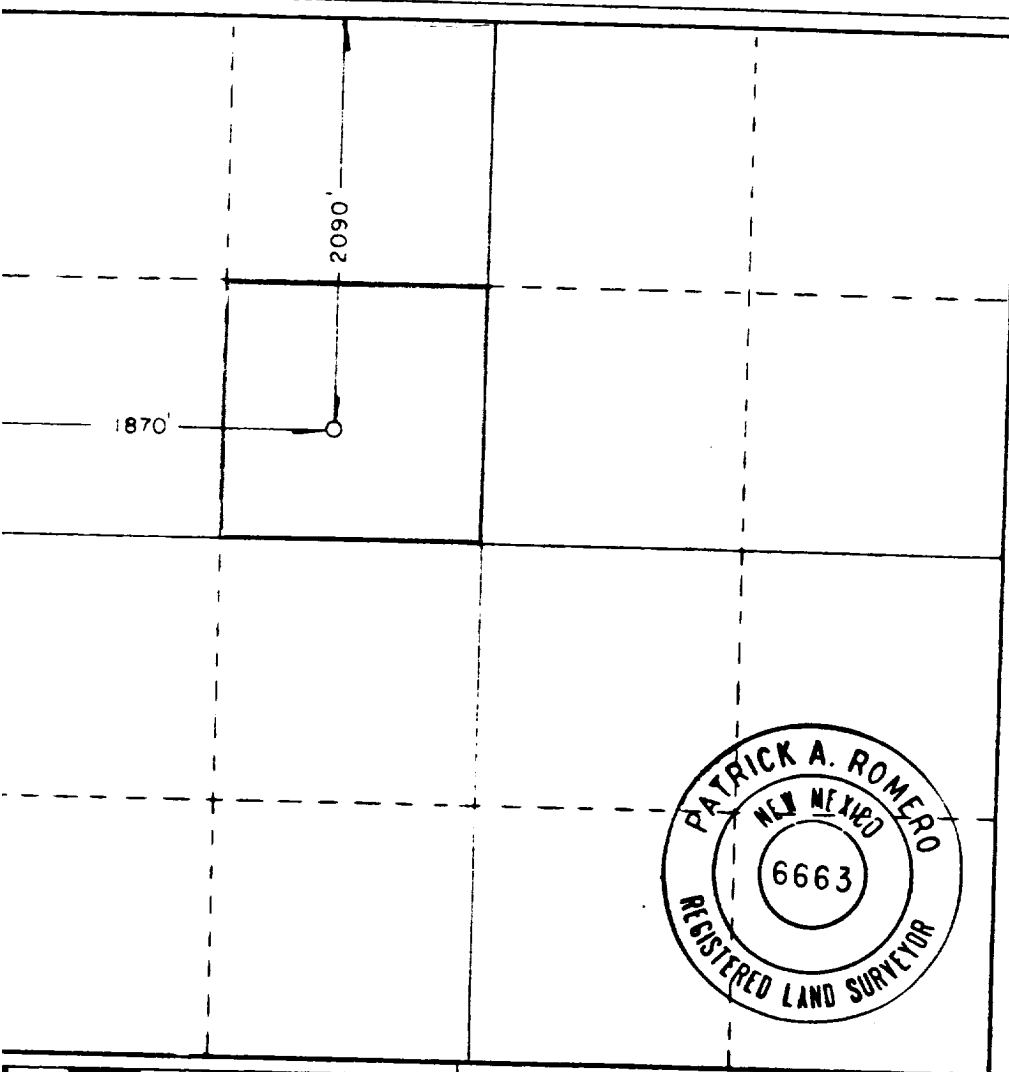
Form C-102
Supersedes C-124
Effective 1-1-85

All distances must be from the outer boundaries of the Section

Tenneco Oil Company			Lease State HL2		
Section F	Section 2	Township 19 South	Range 29 East	County Eddy	
Well Location of Well:					
2090 feet from the north line and		1870 feet from the west line			
Land Level Elev 3391.6	Producing Formation Morrow		Pool Turkey Track-Wolfcamp	Dedicated Acreage 40 Acres	

1. Outline the acreage dedicated to the subject well by colored pencil or hachure marks on the plat below.
2. If more than one lease is dedicated to the well, outline each and identify the ownership thereof (both as to working interest and royalty)
3. If more than one lease of different ownership is dedicated to the well, have the interests of all owners been consolidated by communitization, unitization, force-pooling, etc?
☐ Yes ☐ No If answer is "yes," type of consolidation _____

If answer is "no," list the owners and tract descriptions which have actually been consolidated. (Use reverse side of this form if necessary.) _____
 No allowable will be assigned to the well until all interests have been consolidated (by communitization, unitization, forced-pooling, or otherwise) or until a non-standard unit, eliminating such interests, has been approved by the Commission.



CERTIFICATION

I hereby certify that the information contained herein is true and complete to the best of my knowledge and belief.

Name

Patrick A. Romero

Position

Agent

Company

Tenneco Oil Company

Date

10 - 16 - 81

I hereby certify that the well location shown on this plat was plotted from field notes of actual surveys made by me or under my supervision, and that the same is true and correct to the best of my knowledge and belief.

Date Surveyed

10 - 15 - 81

Registered Professional Engineer and/or Land Surveyor

Certificate No. JOHN W. WEST 678
PATRICK A. ROMERO 6663